



**Package Contents**

- Wireless-G VPN Router with RangeBooster
- Setup Wizard CD-ROM
- User Guide on CD-ROM
- Ethernet Network Cable
- Power Adapter
- Quick Installation
- Registration Card

**2.4GHz**  
54Mbps

**Wireless-G**  
**VPN Router with**  
**RangeBooster**

Quick Installation



There are two ways to configure the Router. Choose one of the following:

- Run the Setup CD-ROM - It is strongly recommended that you use the Setup CD-ROM to install the Router. Insert the Setup CD-ROM into the CD-ROM drive, and follow the on-screen instructions.
- Use this Quick Installation guide - If you wish, you can use the Router's web-based utility to install the Router. Proceed to Step 1, and follow the Quick Installation's instructions.

# 1 Connect the Router

**A** Before you begin, make sure that you have the setup information for your specific type of Internet connection. The installation technician from your ISP should have left this information with you after installing your broadband connection. If not, you can call your ISP to request the settings.

**B** Make sure that all of your network's hardware is powered off, including the Router, PCs, and cable or DSL modem.

**C** Connect one end of an Ethernet network cable to one of the LAN ports (labeled 1-4) on the back of the Router, and the other end to an Ethernet port on a PC.

**D** Repeat this step to connect more PCs, a switch, or other network devices to the Router.



**C**

**E** Connect a different Ethernet network cable from your cable or DSL modem to the Internet port on the Router's back panel.

**F** Power on the cable or DSL modem.

**G** Connect the power adapter to the Router's Power port, and then plug the other end into an electrical outlet.

**H** The Power and Internet LEDs on the front panel will light up green as soon as the power adapter is connected properly.

**I** Power on the PCs.

**J** The Router's hardware installation is now complete.

Proceed to Step 2



**E**



**F**

**IMPORTANT:** Make sure to use the power adapter that is supplied with the Router. Use of a different power adapter could damage the Router.

# 2 Configure the PCs

For Windows 98, Me, 2000 and XP using the default interface, refer to the User Guide on the Setup CD-ROM or your Windows documentation.

The following instructions apply only to Windows 2000 or XP using the Classic interface (in which the icons and menus look like previous Windows versions).

**A** Click the **Start** button. Select **Settings** and click the **Control Panel** icon. Double-click the **Network and Dial-up Connections** icon.

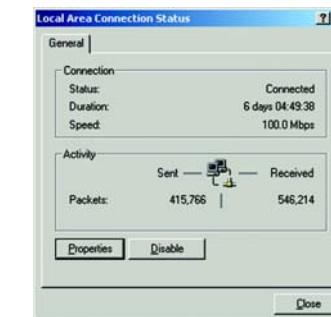
**B** Select the **Local Area Connection** icon for the applicable Ethernet adapter (usually it is the first Local Area Connection listed). Double-click the **Local Area Connection**. Click the **Properties** button.

**C** Make sure the box next to **Internet Protocol (TCP/IP)** is checked. Highlight **Internet Protocol (TCP/IP)**, and click the **Properties** button.

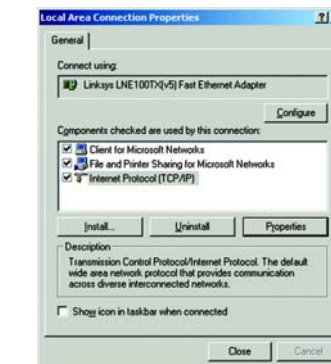
**D** Select **Obtain an IP address automatically**. Once the new window appears, click the **OK** button. Click the **OK** button again to complete the PC configuration, then restart your computer.

Proceed to Step 3.

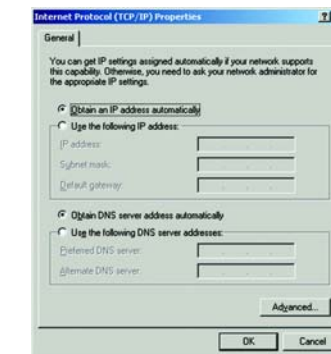
**NOTE:** Before setting up the Router, make sure your PCs are configured to obtain an IP (or TCP/IP) address automatically from the Router.



**B**



**C**



**D**

# 3 Configure the Router

These instructions will show you how to configure the Router. You only need to configure the Router once using any computer you have set up.

**A** Open your web browser. Enter `http://192.168.1.1` in its Address field. Press the Enter key.



A

**B** A password request screen will appear. Enter the default user name and password, **admin**, in lower-case letters in the User Name and Password fields. (For added security, you should later set a new password, using the Administration tab's Management screen of the web-based utility). Then click the **OK** button.



C

**C** The web-based utility will appear with the Setup tab selected. If requested by your ISP (usually cable ISPs), complete the Host Name and Domain Name fields, and the MTU and MTU Size fields. Otherwise, leave the defaults

**D** For the Configuration Type setting, five connection types are offered through the drop-down menu. Each Setup screen and available

features will differ depending on which connection type you select.

**E** Internet Configuration Type

Automatic Configuration - DHCP: If you are connecting through DHCP or a dynamic IP address from your ISP, keep this default setting.

Static IP: If your ISP assigns you a static IP address, select Static IP from the drop-down menu. Complete the Internet IP Address, Subnet Mask, Default Gateway, and DNS fields. You need to enter at least one DNS address.

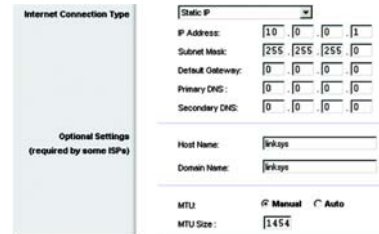
PPPoE: If you are connecting through PPPoE, select PPPoE from the drop-down menu. Complete the User Name and Password fields.

PPTP: PPTP is a service used in Europe only. If you are using a PPTP connection, check with your ISP for the necessary setup information.

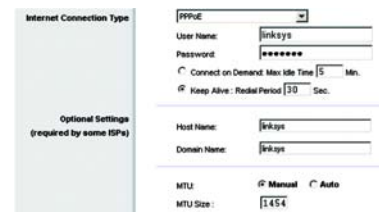
L2TP: L2TP is used mostly in Europe. Check with your ISP for the necessary setup information.



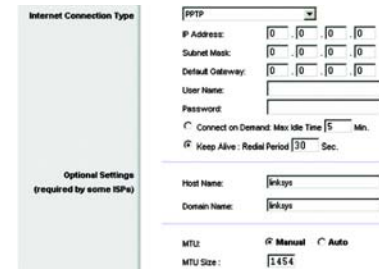
## DHCP



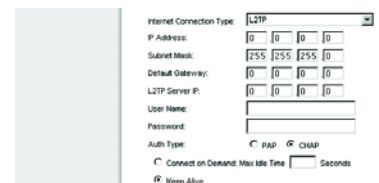
## Static IP



## PPPoE



## PPTP



## L2TP

**F** When you are finished entering your Internet connection settings, click the **Save Settings** button to save your changes.

**G** To configure the Router for your wireless network, select the Wireless Tab's Basic Wireless Settings screen.

**H** Select the Wireless Network Mode: Mixed:

If you have Wireless-G and 802.11b devices in your network, then keep the default setting, Mixed.

G-Only: If you have only Wireless-G devices, select G-Only.

B-Only: If you have only Wireless-G devices, select B-Only.

Disable: If you want to disable wireless networking, select Disable.

**I** Wireless Network Name (SSID). Enter the the network name used for the devices in your wireless network.

**J** TX Rate Limitation. Select the rate of data transmission according to the speed of your wireless network.



S

**K** Wireless SSID Broadcast. When wireless clients survey the local area for wireless networks to associate with, they will detect the SSID broadcast by the Router. To broadcast the Router's SSID, keep the default setting, **Enable**. If you do not want to broadcast the Router's SSID, then select **Disable**.

**L** WMM. To enable Wi-Fi Multimedia, select **WMM**.

**M** Wireless Channel. Select the channel to be used by your wireless network devices.

**N** Change these settings as described here and click the **Save Settings** button to apply your changes.

**O** Restart your computer.

**P** Test the setup by opening your web browser from any computer and entering `http://www.linksys.com/registration`.

Congratulations! The installation of Wireless-G VPN Router is complete.

**Note:** For more advanced settings and security options, refer to the User Guide on the Setup Wizard CD-ROM.



M

## LINKSYS®

A Division of Cisco Systems, Inc.

For additional information or troubleshooting help, refer to the User Guide on the Setup CD-ROM. You can also call or email for further support.

**24-hour Technical Support**  
800-326-7114  
(toll-free from US or Canada)

**E-mail Support**

support@linksys.com

**Website**

<http://www.linksys.com> or  
<http://support.linksys.com>

**RMA (Return Merchandise Authorization)**

<http://www.linksys.com/support>

**FTP Site**

<ftp://ftp.linksys.com>

**Sales Information**

800-546-5797 (800-LINKSYS)

Linksys is a registered trademark or trademark of Cisco Systems, Inc. and/or its affiliates in the U.S. and certain other countries. Copyright © 2006 Cisco Systems, Inc. All rights reserved.