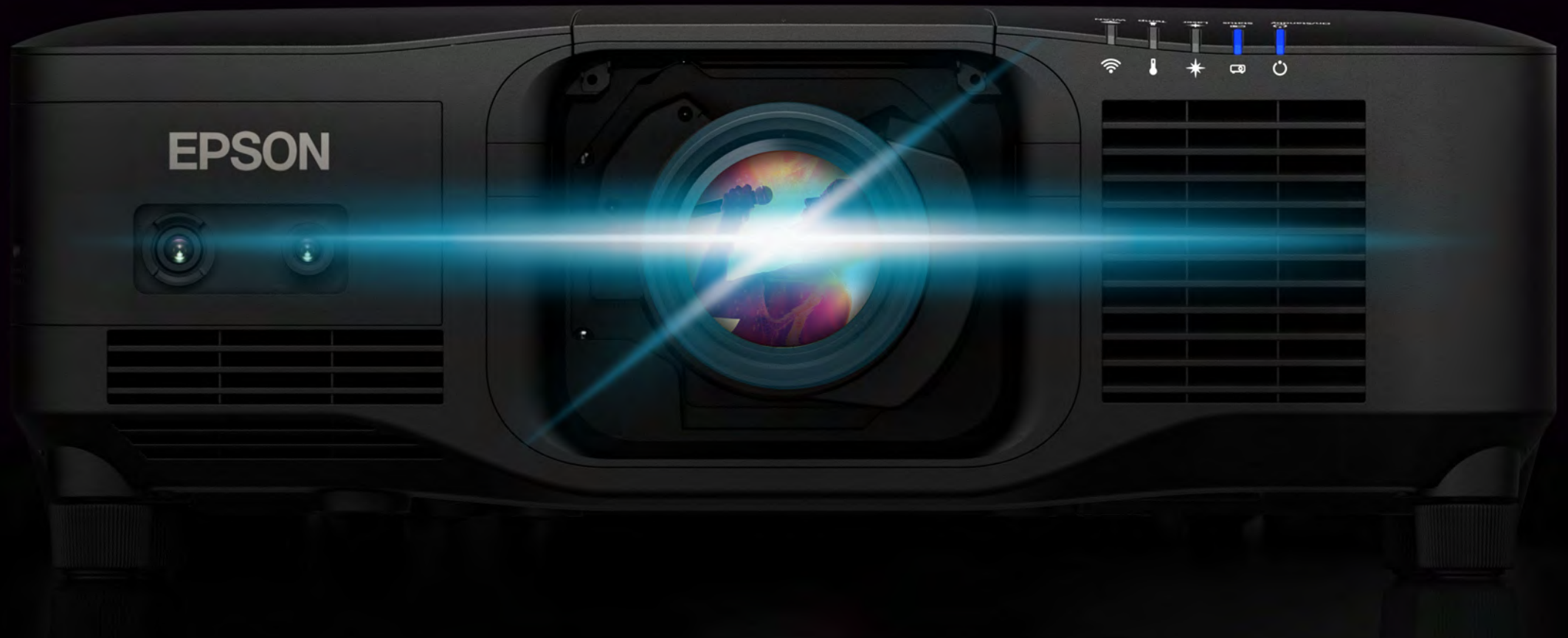


**EPSON**<sup>®</sup>  
EXCEED YOUR VISION

P

EB-PU SERIES



## EB-PU2100 & EB-PU2200 SERIES PROJECTORS

Pro Series Interchangeable Lens Projectors 13,000 - 20,000 Lumens<sup>1</sup>



## ENGAGE AND INSPIRE

Epson® EB-PU2100/2200 Series projectors offer next-level convenience, performance and flexibility. A low-maintenance solution, these projectors feature long-lasting laser light sources and automated adjustment tools to accommodate a variety of applications. Built to last, they also offer a durable design with a sealed light source and optical engine to withstand the most demanding installation environments.

- Laser light source — long life; custom brightness modes
- Compact and lightweight for installation flexibility
- Sealed light source and optical engine
- Filterless cabinet
- Access automated tool set with optional camera<sup>2</sup>
- Auto color calibration and screen matching<sup>3</sup>
- Motorized lenses with lens position memory



## DESIGNED FOR LIVE EVENTS

Whatever the venue size, lighting environment or equipment, there's a lot to keep in mind to ensure all goes off perfectly. With Epson EB-PU2100/2200 Series projectors, you've got one less thing to worry about.

- Sealed light source and optical engine — IP5X Rating<sup>4</sup>
- Compact and lightweight for potential delivery and labor cost savings
- Access automated tool set with optional camera<sup>2</sup>
- Fast Simple Stacking function using remote controller<sup>5</sup>
- Easy maintenance — fast access to key units
- DMX Art-Net easily integrates with lighting protocols
- Mechanical shutter<sup>6</sup>
- Laser-based dimming for fade to black



## EFFICIENT AND FLEXIBLE OPERATION

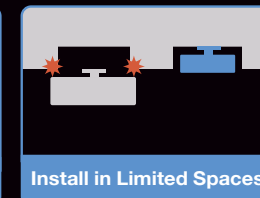
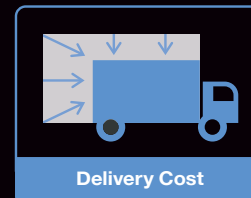
### World's Smallest and Lightest 20,000-Lumen<sup>1</sup> Laser Projector<sup>7</sup>

The new generation of compact, ultra lightweight 3LCD projectors includes the world's lightest and smallest 20,000-lumen<sup>1</sup> projectors<sup>7</sup> — EB-PU2120W and EB-PU2220B — which are 60 percent smaller and 50 percent lighter than the previous generation. Epson achieved this compact size by developing and designing key components in-house.



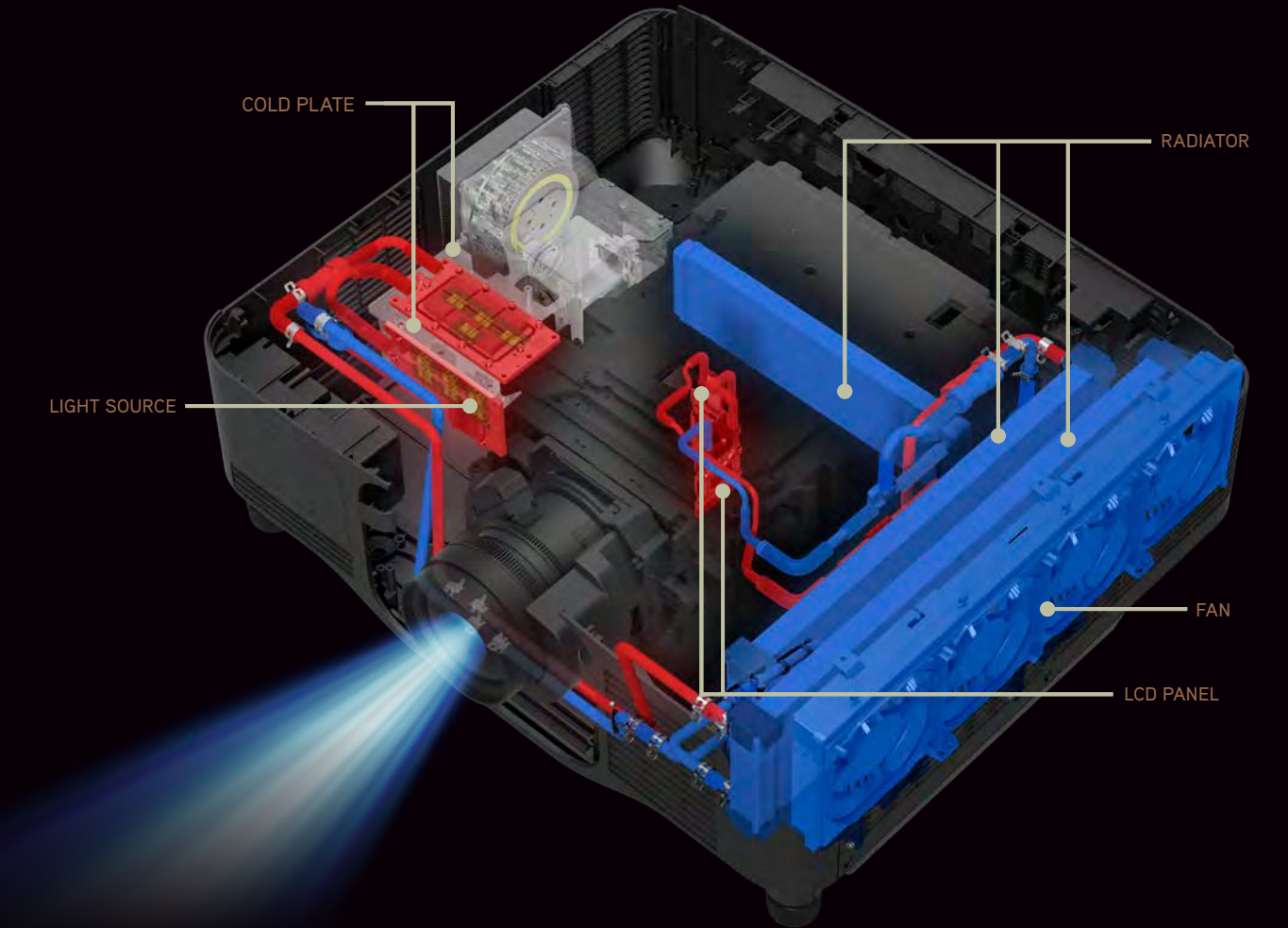
### Benefits of Being Smaller

The EB-PU2100/2200 Series' compact size and reduced weight allow for greater ease of transport and warehousing. These features, plus flexible installation options, help deliver potential cost savings.



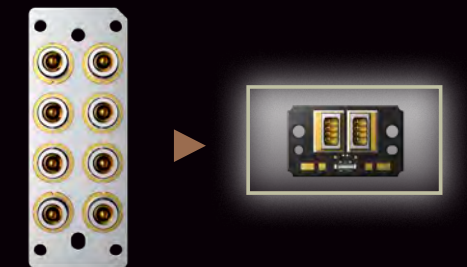
### Sophisticated Liquid Cooling System

Epson has developed a simple yet sophisticated liquid cooling structure, drawing on more than a decade of research and development and professional industry knowledge. Using a unique liquid cooling system to cool the optical engines and laser light source units also makes more compact products a reality.



### High-Efficiency Laser Light Source

The more efficient 4-in-1 laser light source helps reduce the unit's size. This new laser is one-third the size of a conventional laser bank while still delivering the same brightness as the previous generations.

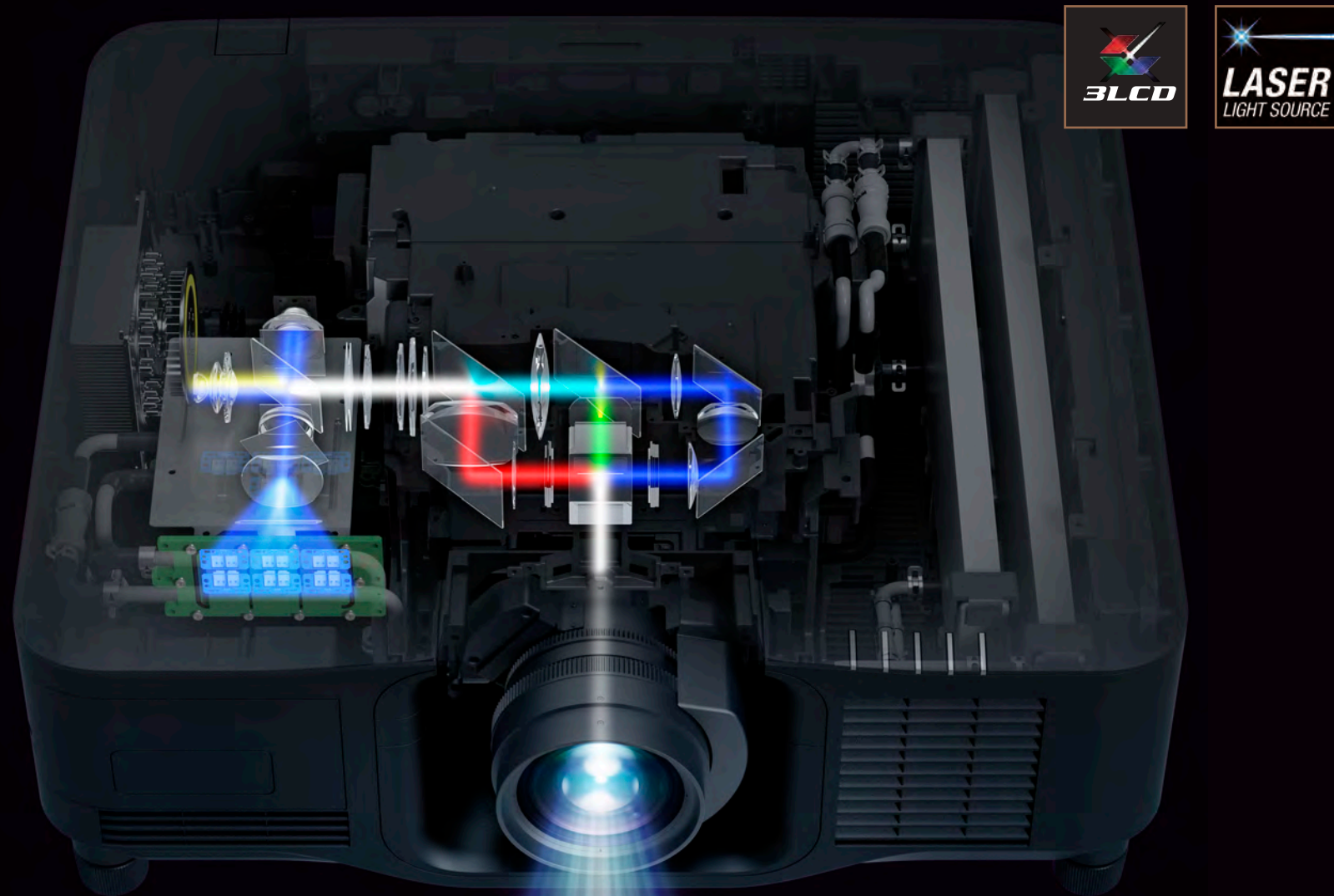


## 3 CHIPS FOR BRIGHTER COLORS

### 3LCD Technology and Laser Light Source

Epson is the first projector manufacturer to combine inorganic 3LCD panels with an inorganic phosphor wheel engineered to achieve higher brightness and reliability. Featuring a lamp-free laser light source, EB-PU2100/2200 Series projectors offer numerous advantages:

- Virtually maintenance-free solid-state laser light source lasting up to 20,000 hours<sup>8</sup>
- 3-chip architecture assigns one chip to process each primary color continuously, unlike single-chip technology that delivers color sequentially
- Accurate, high-color-brightness images for performance you can count on for an array of applications
- High-speed contrast control, a dynamic contrast ratio up to 2,500,000:1 and a wide color gamut for brilliant, color-rich performance



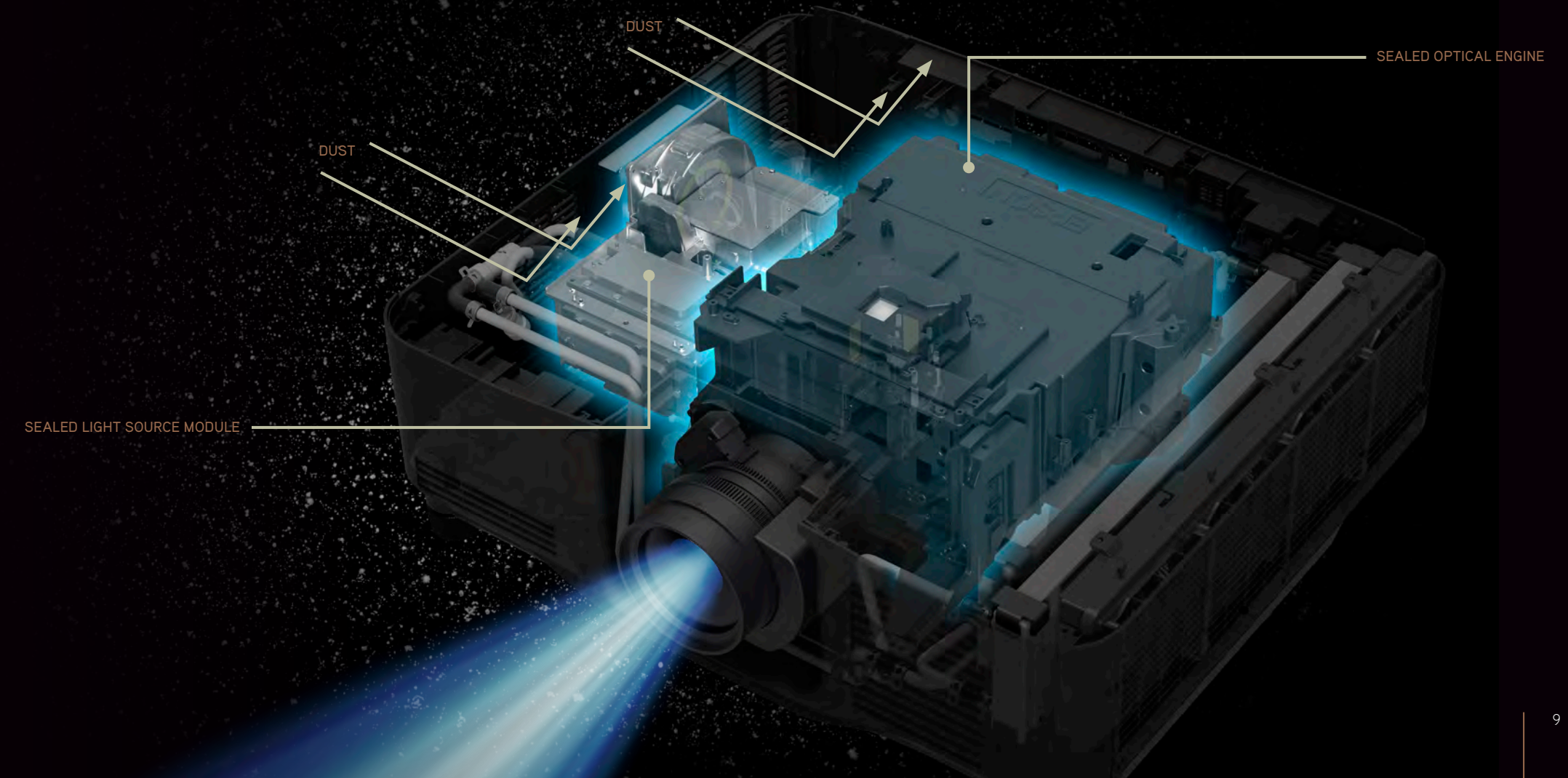
## HIGH RELIABILITY

### High Durability with IP5X-Certified<sup>4</sup> Optical Engine and Laser Light Source Module

The EB-PU2100/2200 Series is equipped with IP5X-certified<sup>4</sup> optical engines and laser light source modules<sup>9</sup>, offering outstanding dust protection. These two key components are hermetically sealed to maintain their performance, even in dusty environments.

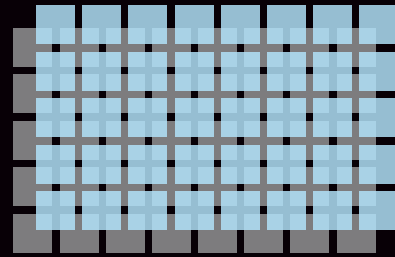
### Design for Hassle-Free Maintenance

In addition to sealed main components, circuit boards found to be at risk of dust-related short-circuits during testing are coated and protected. Thanks to this dust-resistance construction, the EB-PU2100/2200 Series is filter-free, eliminating the need for filter changes<sup>10</sup>.



## 4K ENHANCEMENT TECHNOLOGY

Revolutionary 4K Enhancement Technology<sup>11</sup> accepts a 4K input, allowing viewers to experience the most intricate details. This feature also enhances the 1080p signal for output that surpasses full HD image quality on-screen without visible stair-stepping or pixel gaps. From tiny text to the smallest architectural feature, you'll see every incredible detail.



Pixel Scaling

4K Enhancement Technology<sup>11</sup> shifts each pixel to surpass full HD resolution on-screen.



4K Enhancement Technology<sup>11</sup> off



4K Enhancement Technology<sup>11</sup> on

## HIGH DYNAMIC RANGE SUPPORT

EB-PU2100/2200 Series projectors support HDR-encoded content<sup>12</sup> (HDR10 and Hybrid Log-Gamma) for dynamic output over a broad tonal range with minimal white or black spotting.

SDR (standard dynamic range)



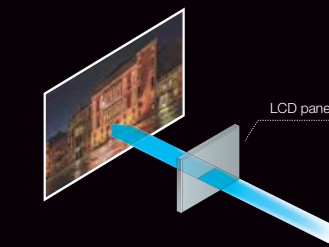
HDR (high dynamic range)<sup>12</sup>



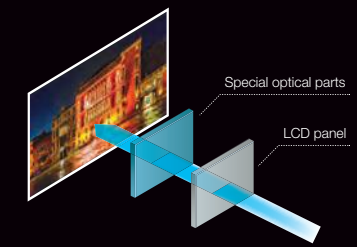
## HIGH CONTRAST

Epson employs technology cultivated from its experience in developing home cinema projectors. A special optical device is used to adjust polarization and achieve high-contrast image projection. Truly dark shades of black can be reproduced in dark projection environments.

Without special optical parts

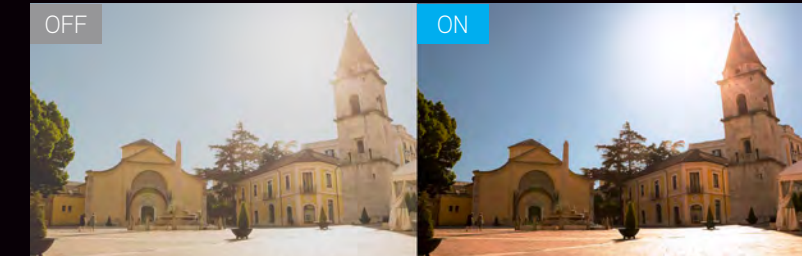


With special optical parts



## SCENE ADAPTIVE GAMMA CORRECTION

Image quality is adjusted according to the content with Epson's scene adaptive gamma correction, which analyzes images frame-by-frame and automatically adjusts the gamma level to project at the optimum contrast. Natural-looking images are achieved by controlling crushed blacks in dark scenes and clipped whites in bright scenes.



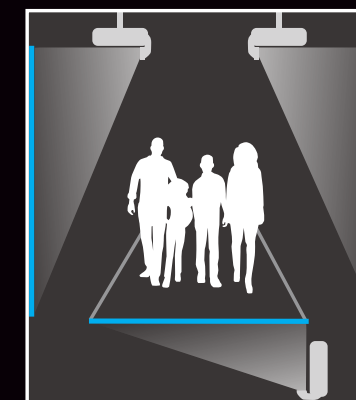
## WIDE SELECTION OF POWERED LENSES WITH LENS MEMORY

### 9 Lenses to Choose From

The EB-PU2100/2200 Series offers increased installation flexibility that allows users to choose the motorized lens best-suited for their environment. Choose from a variety of ranges including ultra short-throw, short-throw, middle-throw and long-throw lenses. A tool-free, quick-release lever enables fast, easy lens exchange.

For details, visit [epson.com/projectorlenses](http://epson.com/projectorlenses)

Lens	Part Number	Product Code	Wide - Tele	Throw Ratio Range													
				1.0	2.0	3.0	4.0	5.0	6.0	7.0	8.0	9.0	10.0				
Ultra Short	ELPLX02S	V12H004X0B	0.35														
Short #1	ELPLU03S	V12H004UA3	0.48 - 0.57														
Short #2	ELPLU04	V12H004U04	0.64 - 0.77														
Wide #3	ELPLW08	V12H004W08	0.86 - 1.21														
Wide #2	ELPLW06	V12H004W06	1.19 - 1.62														
Middle #2	ELPLM15	V12H004M0F	1.57 - 2.56														
Middle #3	ELPLM10	V12H004M0A	2.42 - 3.71														
Middle #4	ELPLM11	V12H004M0B	3.54 - 5.41														
Long	ELPLL08	V12H004L08	5.27 - 7.41														

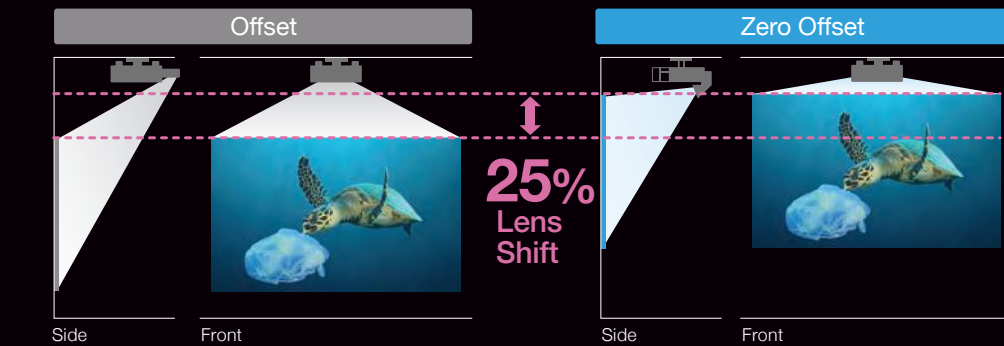


Front projection from above and rear projection from below the floor surface create an immersive experience.

## ZERO-OFFSET ULTRA SHORT-THROW LENS

This lens is especially useful for environments with extremely limited lens-to-screen distances. The short-throw ratio of 0.35 with zero offset lets you project onto large screens from just a few feet away, and the steep angle of light from the lens accommodates close interaction with the display and minimizes shadows.

- Ideal for space-constrained environments — projects large images from a short distance away
- Easy installation in narrow spaces and rear-projection applications — 0.35 throw ratio
- Positioning flexibility — wide lens shift for more options when installing the projector
- Large-screen projection — up to 1,000"



UST lens available to match projector cabinet.

## PIXALIGN™ OPTIONAL ATTACHABLE CAMERA ENABLES POWERFUL TOOLS

Easily create bright, beautiful and seamless displays. Epson's PixAlign ELPEC01 camera provides access to an advanced tool set that makes previously time-consuming and complex applications quick and simple.

- Geometry Correction Assist for Tiling<sup>13</sup> — use to project one large image from up to nine projectors
- Geometry Correction Assist for Stacking<sup>14</sup> — overlap the images of up to six projectors for high brightness and with Epson's Simple Stacking function<sup>5</sup>; an external PC and router are not required
- Screen Matching<sup>3</sup> — use to automatically adjust color and brightness inconsistencies across multiple projectors; this tool is also helpful for edge blends
- Auto Color Calibration<sup>3</sup> — improve the image quality of a single projector
- Remote Camera Capture — great for remote tech support

The PixAlign ELPEC01 camera also supports automatic adjustment in combination with the ELPLX02S ultra short-throw lens by attaching to the top of the lens.



Optional camera placed behind plastic panel to the left of the lens

Optional camera attached to the top of the ultra short-throw lens

Screen Matching<sup>3</sup> and Auto Color Calibration<sup>3</sup>

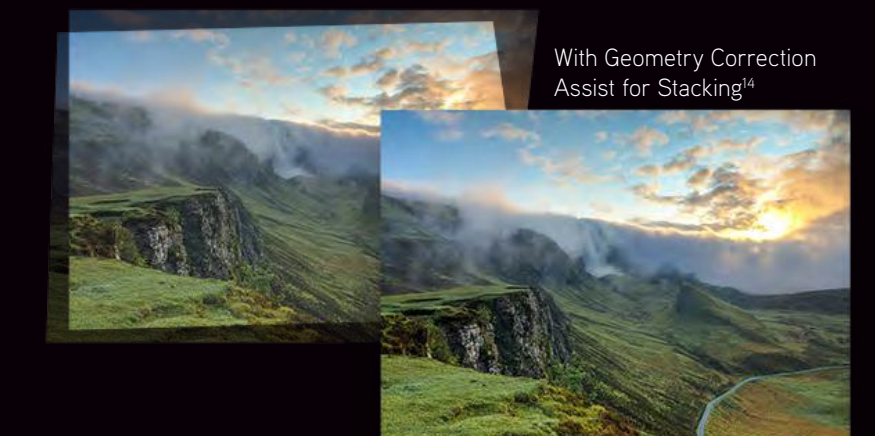


Geometry Correction Assist for Tiling<sup>13</sup>



Geometry Correction Assist for Stacking<sup>14</sup>

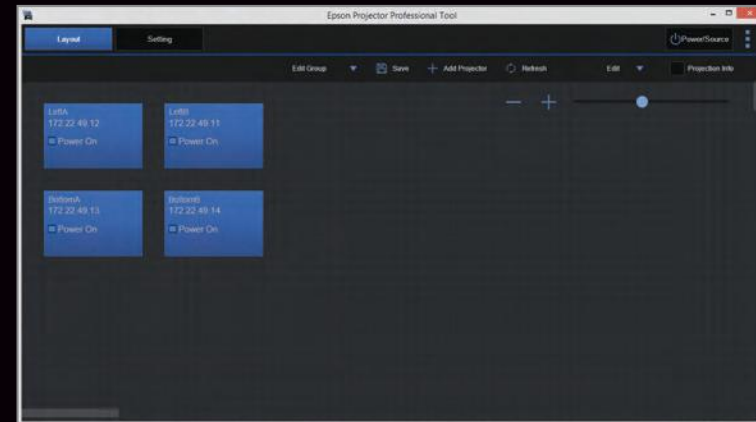
Before Geometry Correction Assist for Stacking<sup>14</sup>



With Geometry Correction Assist for Stacking<sup>14</sup>

# EPSON PROJECTOR PROFESSIONAL TOOL SOFTWARE

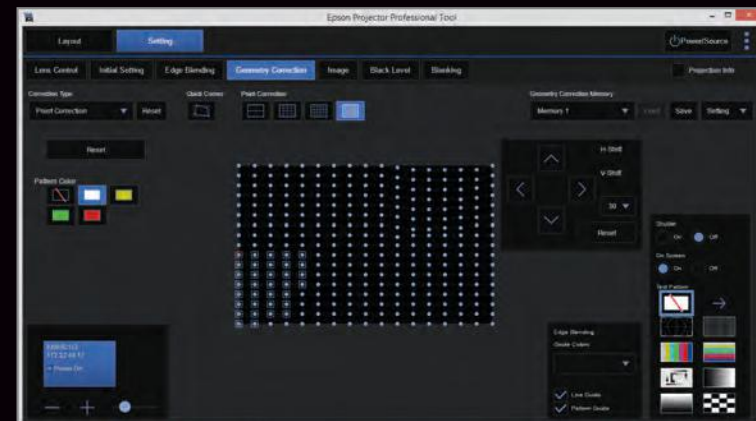
Easily manage the setup of multiple Epson networked projectors in a single, large space with the Epson Projector Professional Tool. This intuitive application makes adjustment simple. Easily access advanced tools like geometric correction and edge blending. It supports wired and wireless networks and can be downloaded at no charge from Epson. Available for Windows® and macOS®.



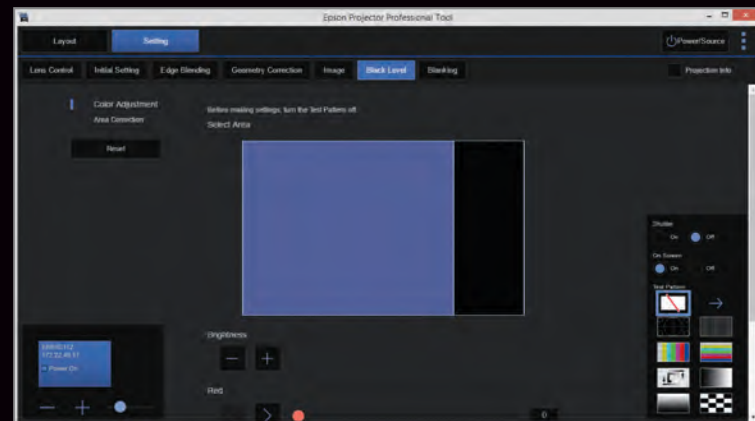
Projector layout



Edge blending



Geometric correction



Black level

# MANAGEMENT AND CONTROL

## Epson Projector Management Software

If you are searching for a solution that gives you control over your time, Epson network projectors with Epson Projector Management Software can help. Epson network projectors contain built-in remote access, with no licensing fee added to the software.

Additional features to assist administrators/help desks include:

- Remote access and control through the network
- Remote monitoring of up to 2,048 Epson networked projectors
- View status, including input sources, power on/off, serial number/MAC address and more
- Preventative maintenance features, including temperature level and error alerts
- Schedule filter and lamp timer settings
- Access camera functions remotely; auto color calibration<sup>3</sup> and screen matching<sup>3</sup>
- Display messages via the Message Broadcasting<sup>15</sup> feature
- Remotely update firmware on networked projectors



## ADVANCED CONNECTIVITY OPTIONS

### Diverse Connectivity, Including HDBaseT™ and 3G-SDI

Connect with virtually any system — EB-PU2100/2200 Series projectors include HDBaseT, HDMI®, VGA and LAN inputs. SDI inputs and outputs are standard on EB-PU2200 Series projectors. HDBaseT technology simplifies installation with just one Cat5/6 cable, carrying full HD video, audio, network and control commands.



SDI in/out only available on black-cabinet EB-PU2200 Series projectors.

### HDMI CEC

If a connected device supports the HDMI CEC standard, there is a function for linking to HDMI, which enables the linked operation of power on/off, among other key functions.

### Wireless Connectivity<sup>16</sup>

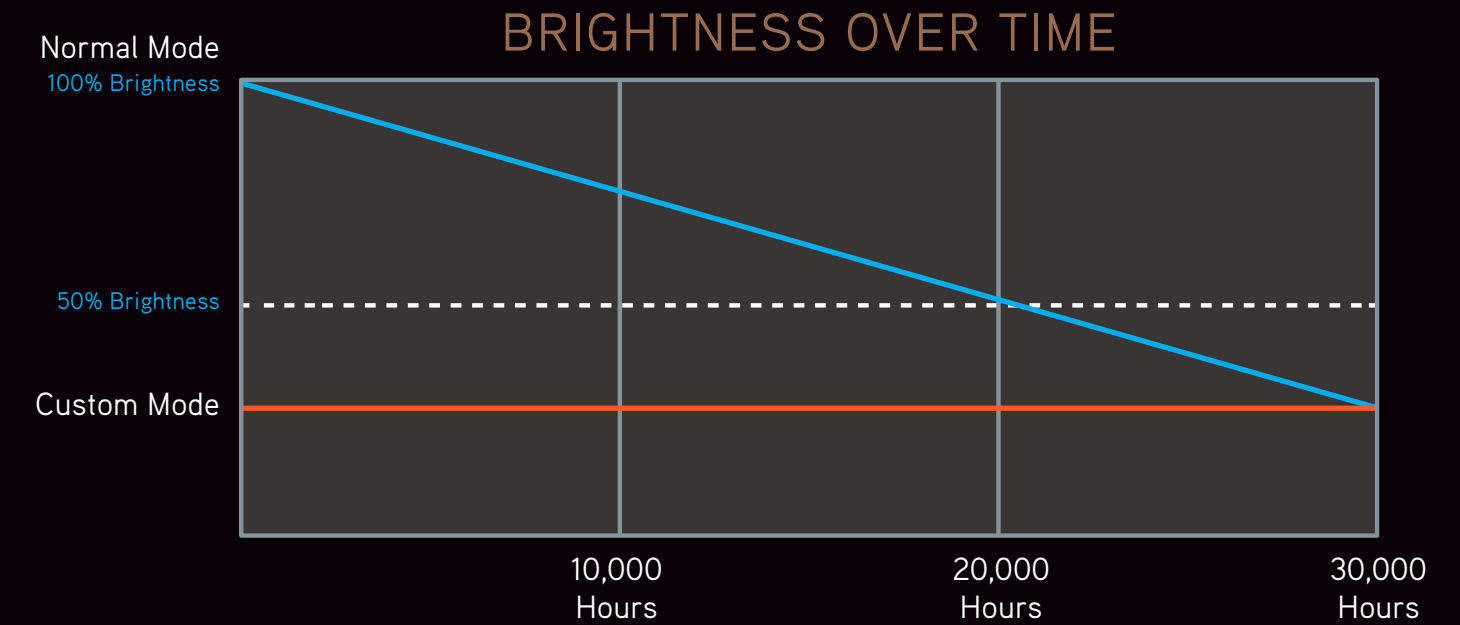
You can either connect to a wireless network infrastructure, an ad hoc (peer-to-peer) wireless computer or a mobile device using the Epson iProjection™ app<sup>16</sup>. Optional wireless module sold separately.

## SIMPLIFIED INSTALLATION

### Standard 120 V Power

Experience super-bright 16,000 lumens of color/white brightness<sup>1</sup> using a standard 120 V power source — all from a quiet, and comparatively lightweight, compact projector.

**16,000 Lumens<sup>1</sup>**  
from a 120 V Power Source



The blue line is a simplified representation of brightness decline over time in Normal Mode. Actual decline may vary depending on usage environment.

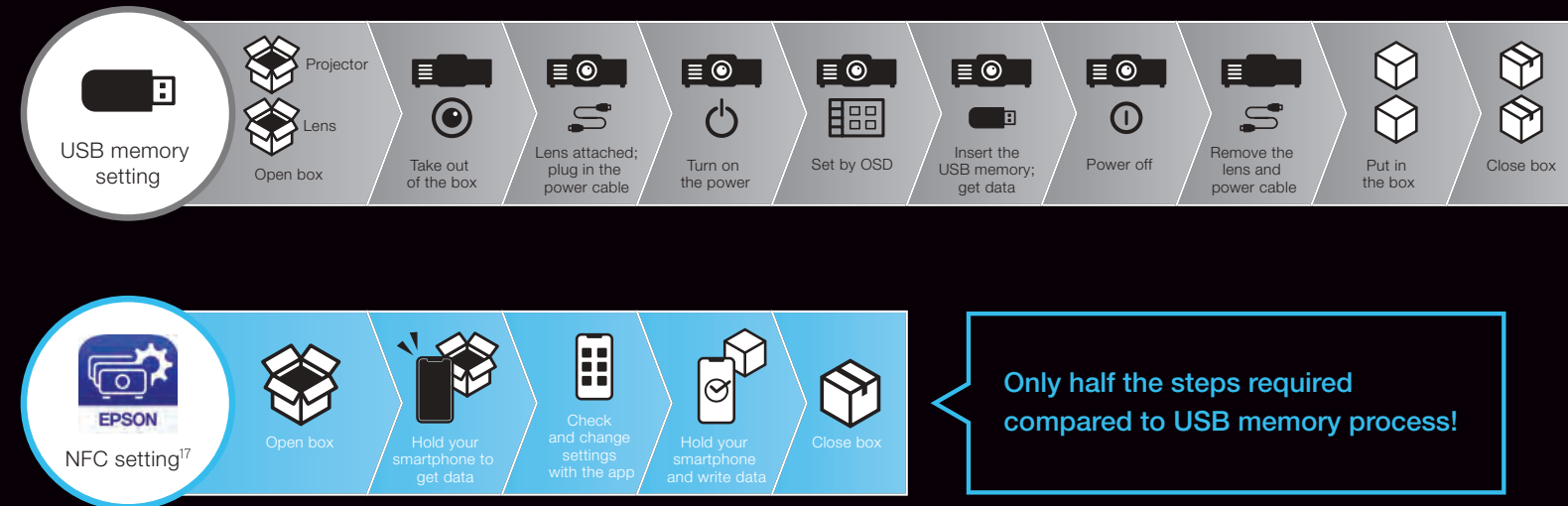
## NFC TECHNOLOGY

### Epson Projector Configuration Tool

NFC technology<sup>17</sup> allows for communication between EB-PU2100/2200 Series projectors and a mobile device, even when the projector is off, making it easy to set and check settings from the Epson Projector Configuration Tool app for iOS® and Android™. Initial settings<sup>18</sup> can be pre-set at the warehouse before delivery, thus helping to reduce the labor involved in commissioning a large number of projectors.



### Initial setting comparison of using USB memory vs. Epson Projector Configuration Tool in warehouse



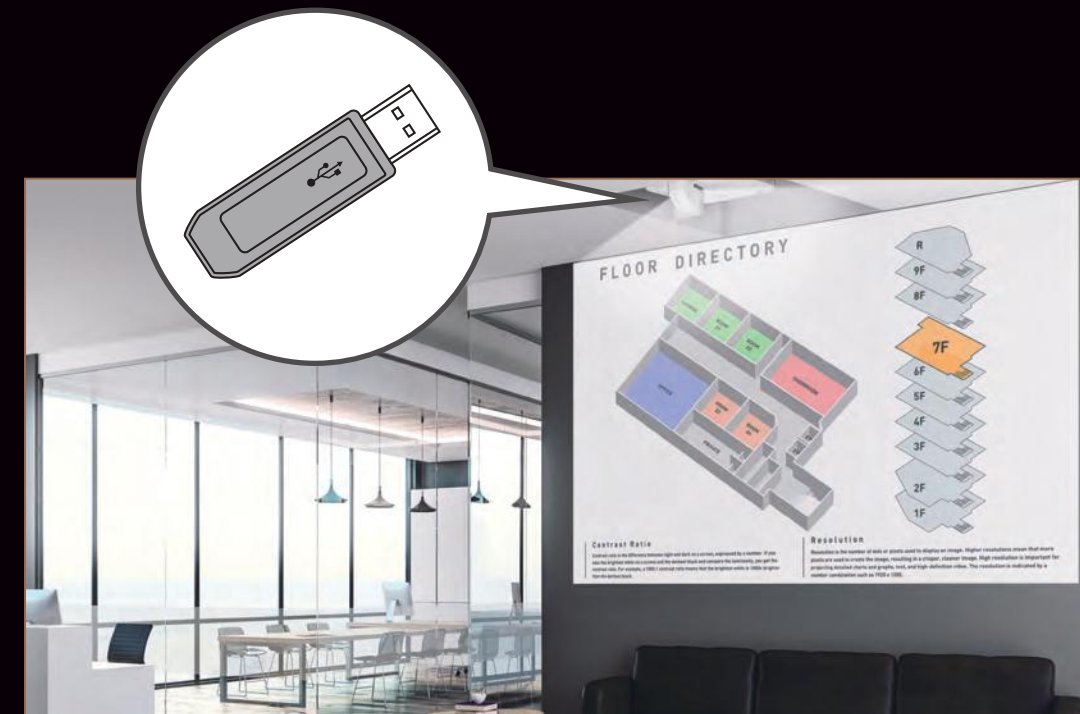
## BUILT-IN MEDIA PLAYER AND OVERLAY EFFECTS

USB memory support lets you project USB-stored images and video without using a PC or dedicated external media player. You can add color filters, shape filters and more on top of your projected image to create a diverse range of visual effects.

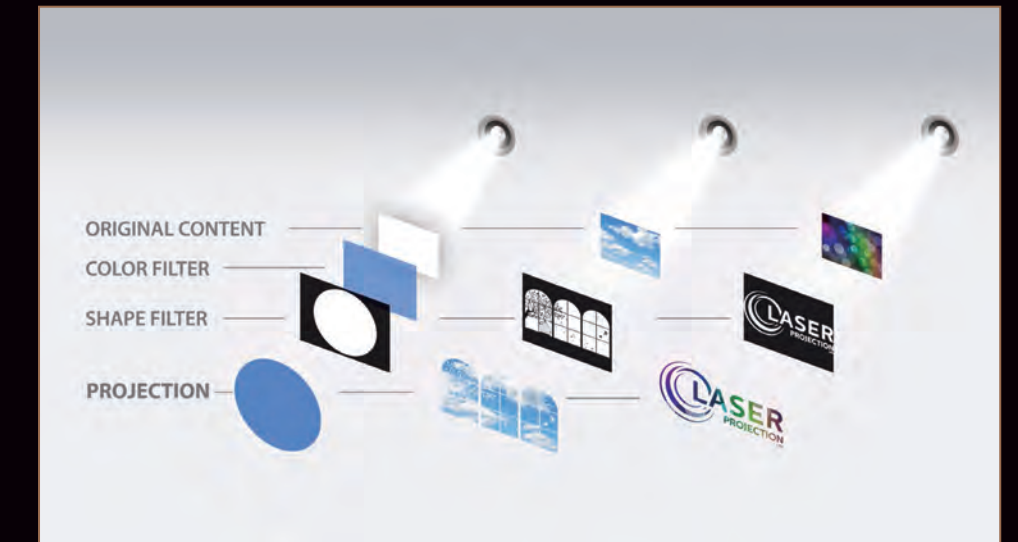
### Epson Projector Content Manager

This free software for Windows and macOS allows you to combine image files, such as photos and videos, into playlists and save them on a network drive, USB or an SD card.

Powerful tools in the application provide for playlist scheduling and help enhance production value. The tools include custom filters that modify color, shape and brightness, effects such as overlays, intervals and transitions, and the ability to schedule playlists and simultaneous playback across multiple projectors.



Content playback



Overlay effects and color filters

## EB-PU2100/2200 SERIES PRODUCT SPECIFICATIONS | DETAILS AND ACCESSORIES

MODEL	EB-PU2113W	EB-PU2213B	EB-PU2116W	EB-PU2216B	EB-PU2220W	EB-PU2220B
Product Code	V11HA65920	V11HA68820	V11HA64920	V11HA67820	V11HA63920	V11HA66820
Case Color	White	Black	White	Black	White	Black
Lens Included	No					
Warranty	3-year limited warranty					
<b>Basics</b>						
Color Brightness (Color Light Output) <sup>1</sup>	13,000 lumens	13,000 lumens	16,000 lumens	16,000 lumens	20,000 lumens	20,000 lumens
White Brightness (White Light Output) <sup>1</sup>	13,000 lumens	13,000 lumens	16,000 lumens	16,000 lumens	20,000 lumens	20,000 lumens
Native Resolution	WUXGA with 4K Enhancement Technology <sup>11</sup> /(1920 x 1200 x2)					
Contrast Ratio	Over 2,500,000:1					
Illumination Technology	Laser Diode					
Light Source Life <sup>8</sup>	20,000 hours					
Split Screen <sup>19</sup>	Yes					
Scheduling Function	Yes					
Mechanical Shutter	No	Yes	No	Yes	No	Yes
Weight (Without Lens)	52.4 lb	52.2 lb	53.5 lb	53.3 lb	53.7 lb	53.7 lb
Power Consumption	886 W	886 W	1,118 W	1,118 W	1,301 W	1,301 W
Fan Noise (Normal/Eco)	34 dB/29 dB	34 dB/29 dB	38 dB/34 dB	38 dB/34 dB	45 dB/37 dB	45 dB/37 dB
Power Requirement	100 - 120 V AC			200 - 240 V AC		
<b>LAN Networking and Control</b>						
Wired	RJ-45 (content over IP)					
Wireless	USB Type-A for wireless LAN adapter (optional)					
Compatible Control Systems	Crestron®, AMX, Extron®, DMX/Art-Net					
Message Broadcasting <sup>15</sup>	Yes					
Epson iProjection <sup>16</sup>	Yes					
Crestron Connected Enabled	Yes					
<b>Connections</b>						
3G-SDI In/Out	No	Yes	No	Yes	No	Yes
HDMI	Yes					
HDBaseT	Yes					
DVI-D	Yes					
VGA	Yes					
USB 2.0 Connectors	Type-B x1 (for firmware update, copy OSD settings) / Type-A x2 (for wireless LAN adapter, service, content playback)					
Serial Control	Serial: RS-232C x1 (9-pin)					
Recommended Accessory 1	Projector Ceiling Mount ELPMB67 (V12HA54010)					
Recommended Accessory 2	Wireless LAN Adapter ELPAP11 (V12H005A02)					
Recommended Accessory 3	PixAlign Camera ELPEC01 (V12HA46010)					

## EB-PU2100/2200 SERIES PRODUCT SPECIFICATIONS | DETAILS AND ACCESSORIES



### ACCESSORIES



## EPSON BUSINESS SOLUTIONS

Epson is a leading provider of innovative technology solutions that help businesses succeed. We partner with you to best meet your specific needs, focusing on:

- Improved productivity
- World-class customer service and support
- Cost-effective, high-quality solutions
- A commitment to the environment

Discover how Epson can help you work toward the future — [www.epson.com/forbusiness](http://www.epson.com/forbusiness)

**Better Products for a Better Future™**  
[eco.epson.com](http://eco.epson.com)



Epson  
**PRO**  
Series

Epson America, Inc.  
3131 Katella Ave., Los Alamitos, CA 90720

Epson Canada Limited  
185 Renfrew Drive, Markham, Ontario L3R 6G3

[epson.com/largevenue](http://epson.com/largevenue)  
[epson.ca/largevenue](http://epson.ca/largevenue)

Caution: Class 2 laser product. Do not stare into the beam.

- 1 Color brightness (color light output) and white brightness (white light output) will vary depending on usage conditions. Color light output measured in accordance with IDMS 15.4; white light output measured in accordance with ISO 21118.
- 2 Camera is an optional accessory.
- 3 Using separate camera for each projector.
- 4 For optical engine unit and light source module only.
- 5 Simple stacking requires optional camera for each projector.
- 6 Only black units (EB-PU2200 Series).
- 7 Comparison based on projectors rated at 20,000 lumens. Lumens, size and weight based on the manufacturers' online specifications and industry-available data as of December, 2021. Excludes other Epson models.
- 8 No required maintenance for the light source for up to 20,000 hours. Approximate time until brightness decreases 50% from first usage. Measured by acceleration test assuming use of 0.04 - 0.20 mg/m<sup>3</sup> of particulate matter. Time varies depending on usage conditions and environment. Replacement of parts other than the light source may be required in a shorter period.
- 9 JIC C 0920 compliant in Japan.
- 10 Operation is not guaranteed in all environments. Use of an enclosure is recommended in environments where smoke containing oil, moisture, or salt is in use.
- 11 4K Enhancement Technology shifts each pixel to surpass Full HD resolution on screen.
- 12 HDR performance available with select third-party devices. For more information, see [www.epson.com/hdrcompatibility](http://www.epson.com/hdrcompatibility)
- 13 Requires Epson external camera for each projector and the Epson Projector Professional Tool app.
- 14 Requires Epson external camera for each projector.
- 15 Works only with Epson projectors that support presentation over the network capability.
- 16 For wireless functionality, including via the Epson iProjection App, the projector must be configured on a network, either through the Ethernet port on the projector (check model specifications for availability) or via a wireless connection. Check your owner's manual to determine if a wireless LAN module must be purchased separately to enable a wireless connection. Not all Epson projectors are able to be networked. The Epson iProjection App does not support all files and formats. See [www.epson.com](http://www.epson.com) for details.
- 17 NFC requires use of a device that includes NFC and may require additional software.
- 18 Some settings are not supported; please refer to User's Guide for details.
- 19 Split Screen feature requires remote control. Consult your user manual for input combinations.