

Product data sheet

Specifications



APC Back-UPS 600VA, 120V, 1 USB charging port, 7 NEMA outlets (2 surge)

BE600M1

Overview

Lead time Usually in Stock

Main

Main Input Voltage	120 V
Main Output Voltage	120 V
Kw Rating	330 W
Rated power in VA	600 VA
Product or Component Type	Uninterruptible power supply (UPS)
Input Connection Type	NEMA 5-15P
output connection type	5 NEMA 5-15R 2 NEMA 5-15R surge
Cable length	5 ft (1.5 m)
Battery Type	Lead-Acid battery
Provided equipment	User Manual

Batteries & Runtime

Run Time	View Runtime Graph
Efficiency	View Efficiency Graph
Included Battery Modules	0
Battery Slots Empty	0
Typical recharge time	10 h
RBC Quantity	1
Battery Charge Power (Watts)	7 W rated
Battery power in VAH	66 VAh runtime
Battery Life	3...5 year(s)
Replacement battery	APCRBC154
Extendable Run Time	0

General

Number of power module free slots	0
Number of power module filled slots	0
Redundant	No

Physical

color	Black
Height	5.5 in (13.9 cm)
Width	10.8 in (27.4 cm)
Depth	4.1 in (10.5 cm)
Net Weight	7.69 lb(US) (3.49 kg)
Mounting preference	No preference
Mounting Mode	Not rack-mountable
Two post mountable	0
USB compatible	No

Input

Input Frequency	50/60 Hz +/- 3 Hz auto-sensing
Efficiency at full load	92...139 V

Output

Max Configurable Power (Watts)	330 W
Output Frequency (sync to mains)	50/60 Hz +/- 3 Hz sync to mains
Topology	Standby
Waveform Type	Stepped approximation to a sinewave
Maximum configurable power in VA	600 VA
Transfer Time	6ms typical : 10ms maximum

Conformance

Product Certifications	California (CEC) Battery Charger cTUVus NOM
Equipment protection policy	Lifetime : \$75000

Environmental

Ambient Air Temperature for Operation	32...104 °F (0...40 °C)
Relative Humidity	0...90 %
Operating altitude	0...3000 ft
Ambient Air Temperature for Storage	5...113 °F (-15...45 °C)
Storage Relative Humidity	0...95 %
Storage altitude	0...5000 ft (0.0000000000...1524.0000000000 m)
Acoustic level	35 dBA
Online Thermal Dissipation	16 Btu/h

Communications & Management

Control panel	LED status display with on line : on battery : replace battery and overload indicators
Alarm	Alarm when on battery : distinctive low battery alarm : overload continuous tone alarm

Surge Protection and Filtering

Surge energy rating	490 J
Filtering	Full time multi-pole noise filtering : 0.3% IEEE surge let-through : zero clamping response time : m
Let Through Voltage Rating	5 V

Ordering and shipping details

Category	11309-APC RESALE PRODUCTS
Discount Schedule	APC1
GTIN	731304325116
Returnability	No

Packing Units

Unit Type of Package 1	PCE
Number of Units in Package 1	1
Package 1 Height	7.7 in (19.6 cm)
Package 1 Width	6.6 in (16.8 cm)
Package 1 Length	14.3 in (36.3 cm)
Package 1 Weight	8.40 lb(US) (3.81 kg)
SCC14	10731304325113

Contractual warranty

Warranty	3 years repair or replace
----------	---------------------------

Sustainability

Green Premium™ label is Schneider Electric's commitment to delivering products with best-in-class environmental performance. Green Premium promises compliance with the latest regulations, transparency on environmental impacts, as well as circular and low-CO₂ products.

[Learn more about Green Premium >](#)



Transparency RoHS/REACH

Well-being performance

Mercury Free

RoHS Exemption Information Yes

Certifications & Standards

Reach Regulation [REACH Declaration](#)

Eu Rohs Directive Compliant with Exemptions

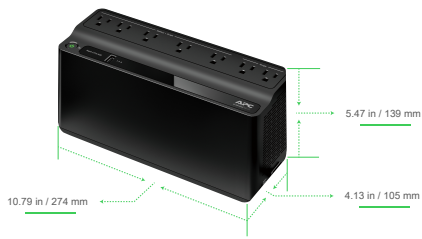
Environmental Disclosure [Product Environmental Profile](#)

Circularity Profile [End of Life Information](#)

California Proposition 65 **WARNING:** This product can expose you to chemicals including: Lead and lead compounds, which is known to the State of California to cause cancer and birth defects or other reproductive harm. For more information go to www.P65Warnings.ca.gov

Technical Illustration

Dimensions



Offer Marketing Illustration

Product benefits / Features



Image of product / Alternate images

Alternative



