

# ITZ-NIF



## ZZPLAY

Advanced CarPlay/Android Auto integration for select Nissan/Infiniti vehicles equipped with 8" touch screen



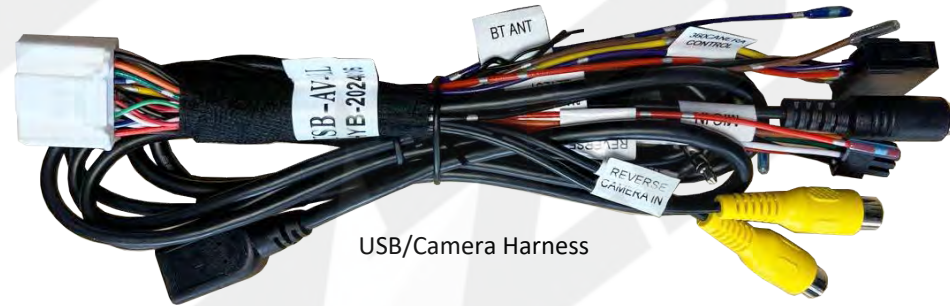
# ITZ-NIF

Wireless CarPlay / Android Auto + Camera input for Nissan/  
Infiniti vehicles equipped with 8" touchscreen

## Kit Components:



ITZ-NIF Interface



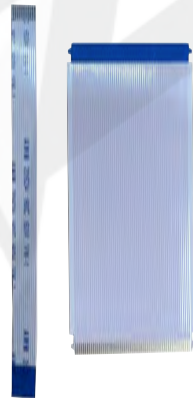
USB/Camera Harness



Screen T-Harness



Internal  
Modification  
PCB



Video & Touch Ribbons



PCB Connect Cable

Power T-Harness



# ITZ-NIF

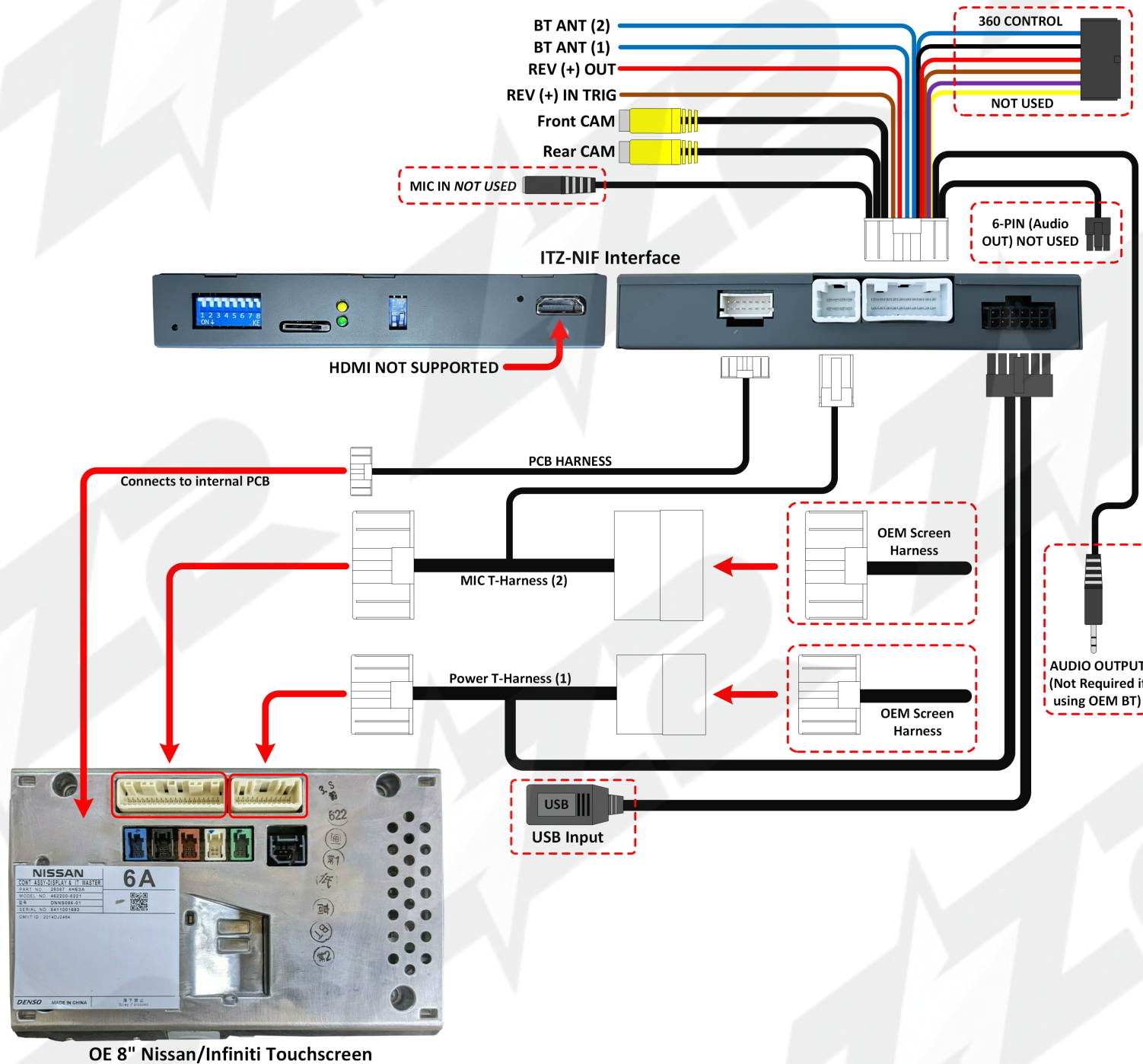
Wireless CarPlay / Android Auto + Camera input for Nissan/Infiniti vehicles equipped with 8" touchscreen

## Installation Diagram:

### NOTE:

- Using the OEM Nissan/Infiniti system to handle phone calls & music is recommended for best performance

- To switch screen into the interface (or back to OEM), swipe anywhere with (3) fingers close together, or press and HOLD track UP. Otherwise, the screen will switch automatically when a phone finished connecting.





# OE Screen Removal

Removal instructions for a 2017 Infiniti QX60 - other vehicles may be similar.

CarPlay / Android Auto + Camera input for Nissan/Infiniti vehicles equipped with 8" Touch Screen



1. Remove the rubber mat surrounding the cigarette adapter below the radio.

2. Remove (pry forwards) the plastic piece which houses the LED above the middle cubby area. Disconnect the LED harness.



3. Remove (pull forwards) the plastic beauty panel



4. Remove (2x) screws securing the radio facia (one screw shows)



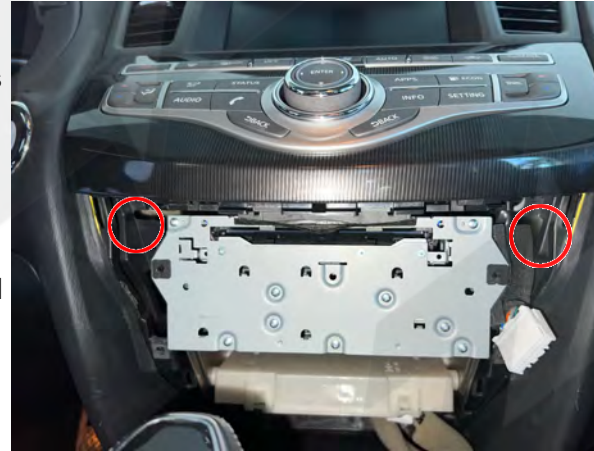


# ITZ-NIF

CarPlay / Android Auto + Camera input for Nissan/Infiniti vehicles equipped with 8" Touch Screen



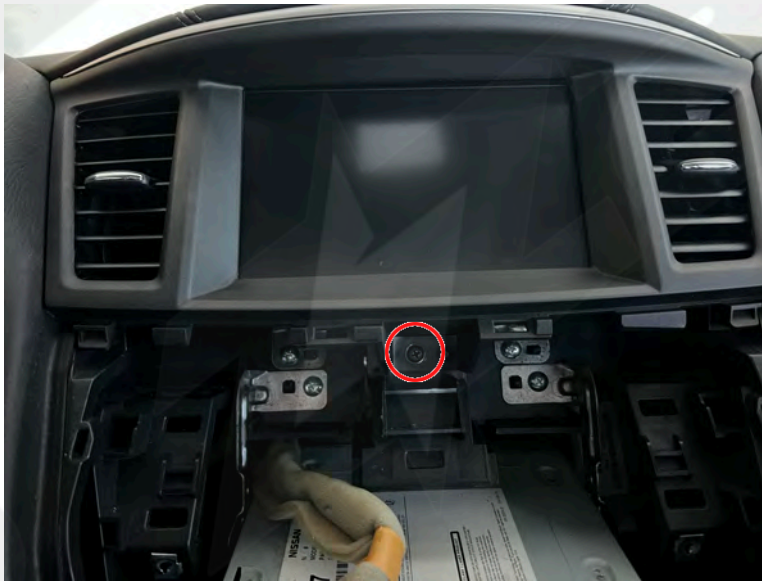
5. Once the radio fascia is removed, remove (2x) screws from the climate control/settings panel in a similar location to step 4.



6. Pull the climate panel straight towards you after screws have been removed.



7. Remove (1x) screw in the middle of the screen fascia.



8. Remove (2x) screws securing screen to sub-dash and the monitor flips upwards to remove. Remove harnesses and bring screen to bench top for disassembly (see following pages)

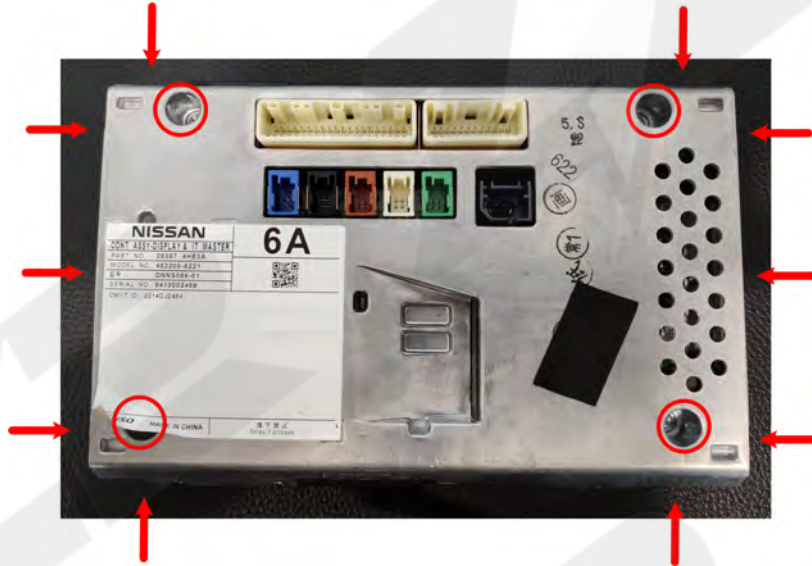




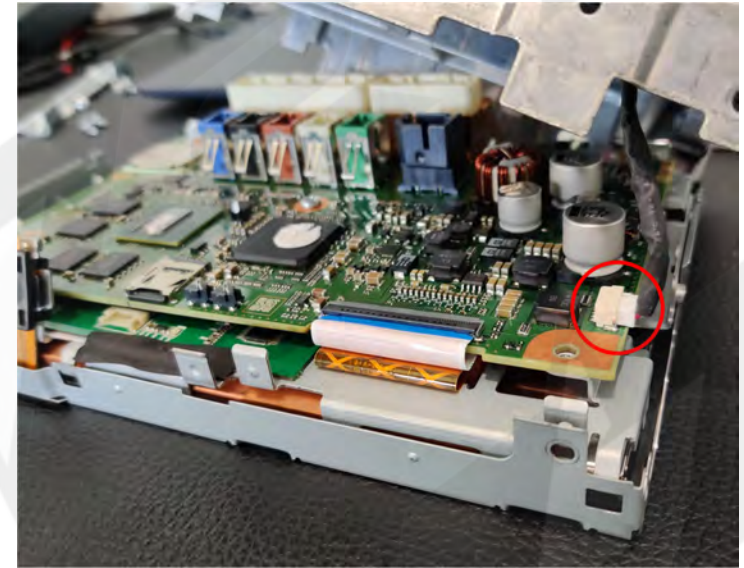
# ITZ-NIF

CarPlay / Android Auto + Camera input for Nissan/Infiniti vehicles equipped with 8" Touch Screen

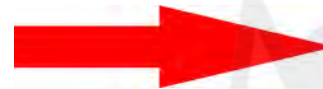
1. Remove upper screen from dashboard, take to bench and place upside down on SOFT surface. Remove all screws indicated by arrows and circles.



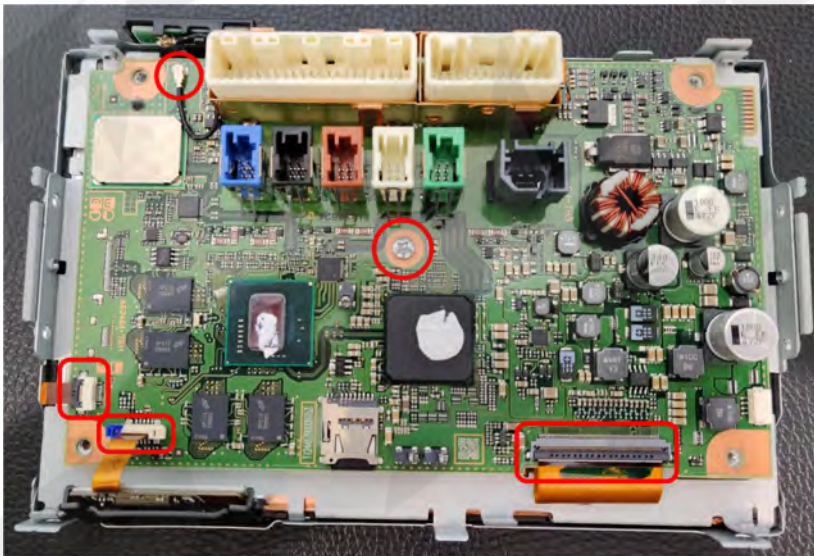
2. BE CAREFUL when lifting the back half of the screen, disconnect the fan cable first.



3. Remove center screw securing PCB to metal. Remove (3) ribbons and (1) antenna wire CAREFULLY.



Remove the OE PCB carefully and place aside in a safe place.

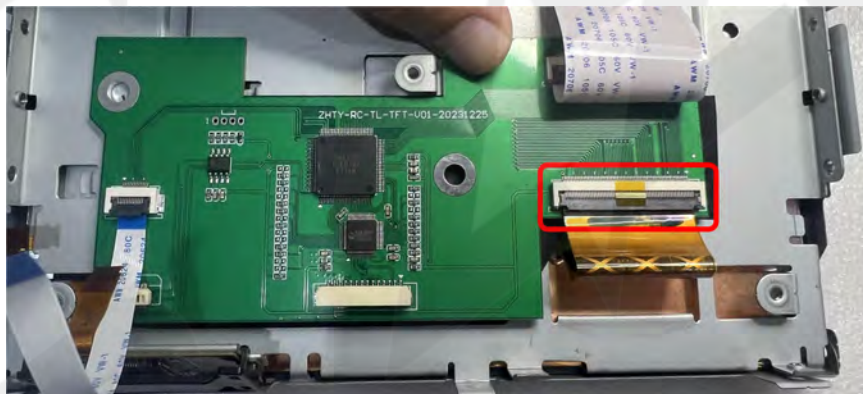
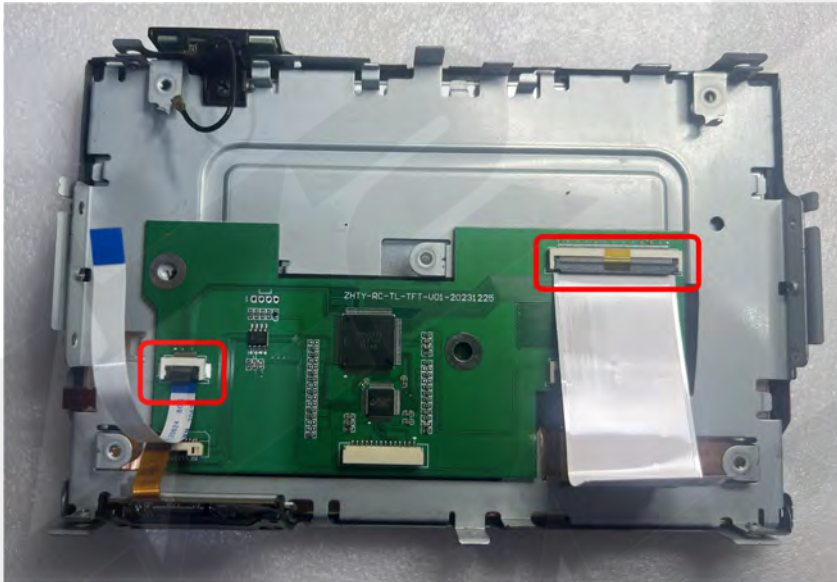




# ITZ-NIF

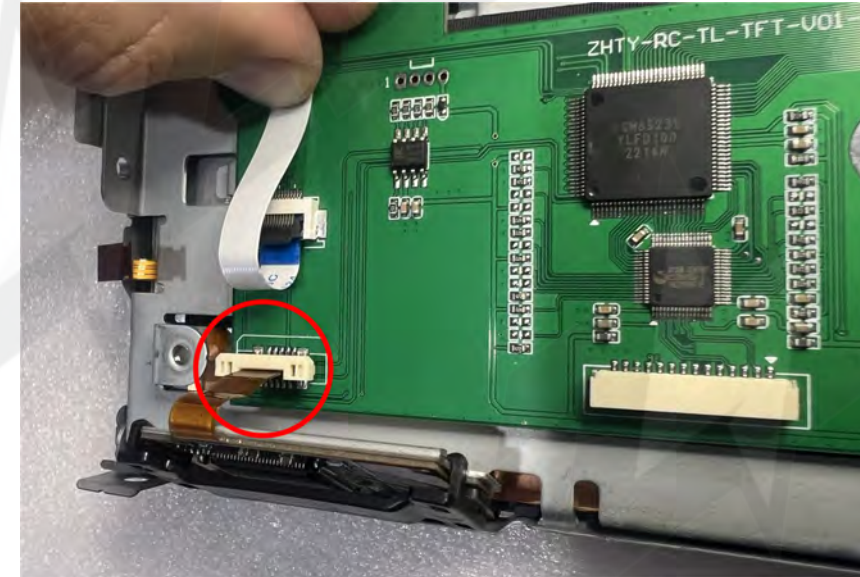
CarPlay / Android Auto + Camera input for Nissan/Infiniti vehicles equipped with 8" Touch Screen

4. Place the provided PCB down onto the metal like shown. (2) provided ribbons must be connected to the PCB and connect in place of the factory ribbons removed earlier.

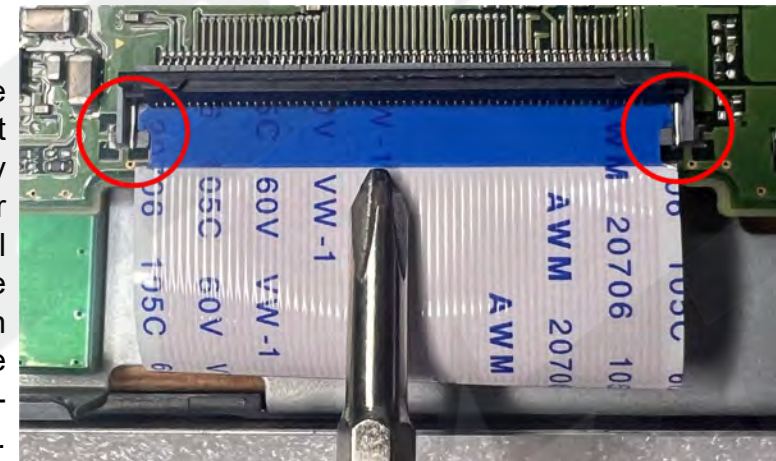


The wider OE (gold) ribbon is for video. Connect to the lower-right FFC as shown here.

5. The smaller OE (gold) ribbon is for touch control. Connect it to the lower-left FFC as shown here. After this is complete, use the black tape provided to secure down the mod PCB (not shown).



When connecting the video ribbon, it does not insert all the way forwards. After insertion, pull backwards so the corners of the ribbon meet the corners of the connector properly - then clamp down.

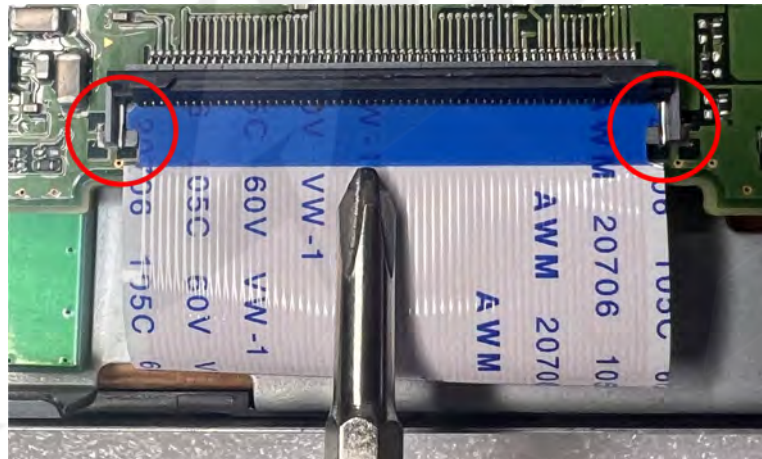
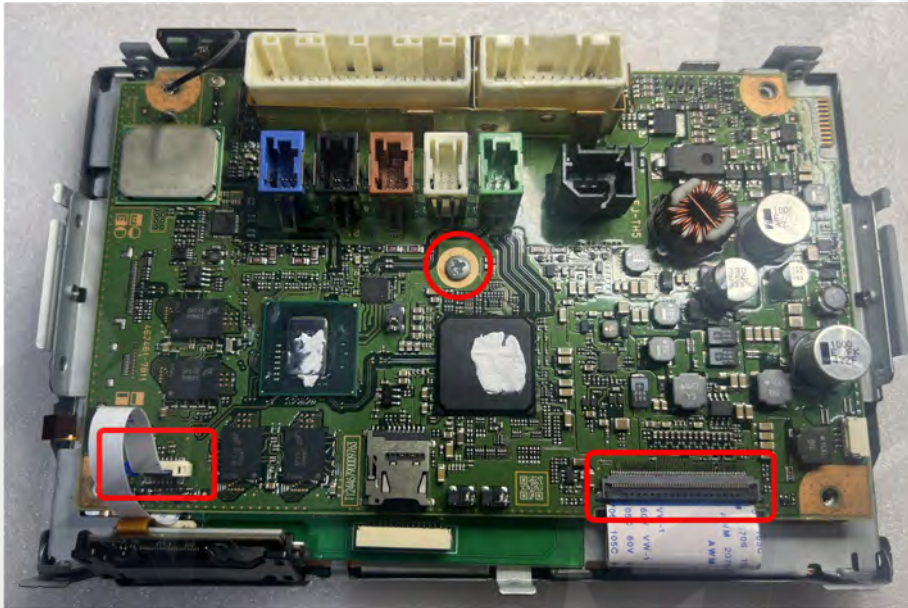




# ITZ-NIF

CarPlay / Android Auto + Camera input for Nissan/Infiniti vehicles equipped with 8" Touch Screen

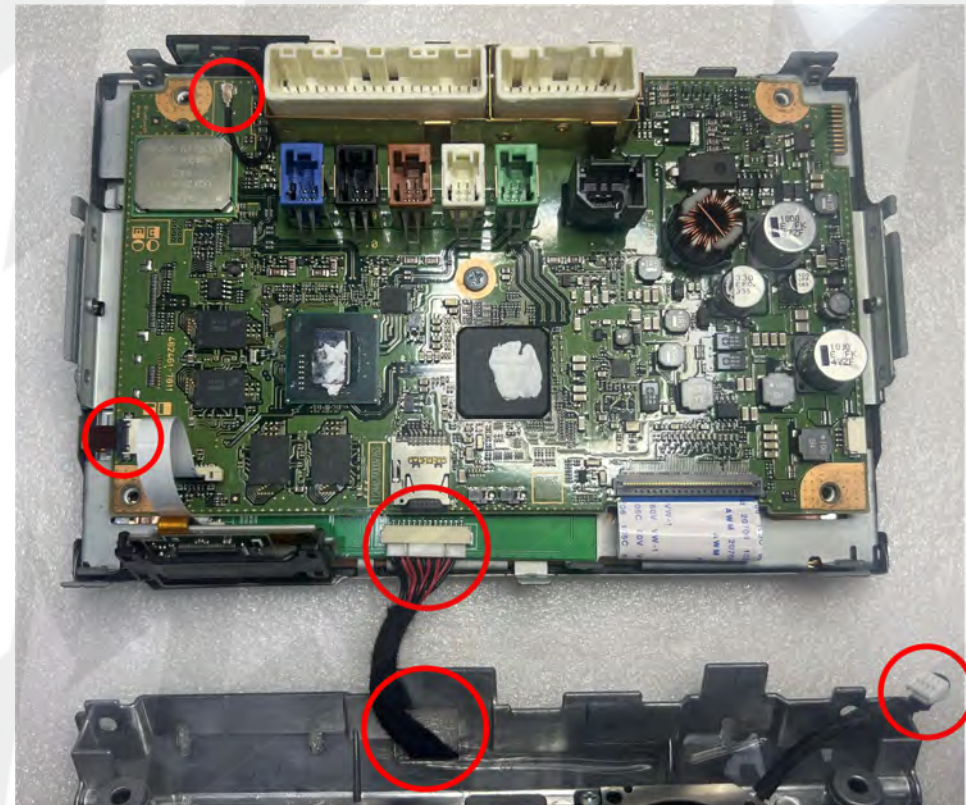
6. Place the OE PCB on top of the provided modification PCB and replace (1) screw in the middle. Connect the provided video & touch ribbons to the OE OCB.



When connecting the video ribbon, it does not insert all the way forwards. After insertion, pull backwards so the corners of the ribbon meet the corners of the connector properly - then clamp down.

7. Connect the provided PCB Cable through the bottom hole on the OE metal screen chassis and connect to the connector as shown.

Replace the last OE ribbon to the PCB and reconnect the Bluetooth antenna cable. Connect the fan cable last and replace the metal chassis, replace all screws.





# ITZ-NIF

Wireless CarPlay / Android Auto + Camera input for Nissan/  
Infiniti vehicles equipped with 8" touchscreen

## DIP Switch Settings:



### ALL VEHICLES:

	1	2	3	4	5	6	7	8
OFF: Adding Aftermarket Camera		KEEP	KEEP	KEEP	KEEP	KEEP	KEEP	KEEP
ON: Equipped with OEM Camera		OFF	OFF	OFF	ON	ON	ON	ON

### IMPORTANT NOTES:

- ZZ-2 recommends the end user connects phone Bluetooth to both the ZZPLAY system and the factory Bluetooth audio system for best results.

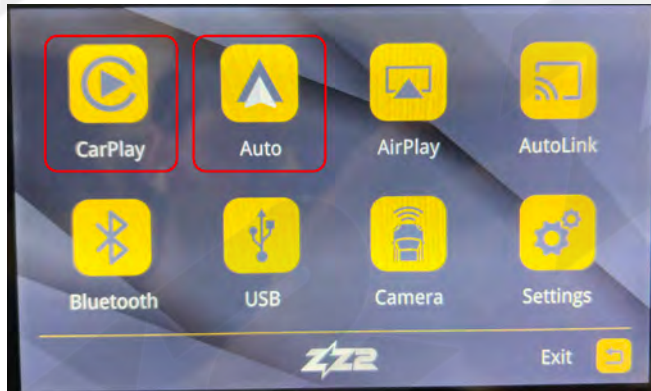
The settings 'BT Channel' must be turned ON for this to function properly (default). This allows the Nissan/Infiniti radio to handle all audio from CarPlay / Android Auto.

- HDMI is not supported on this module

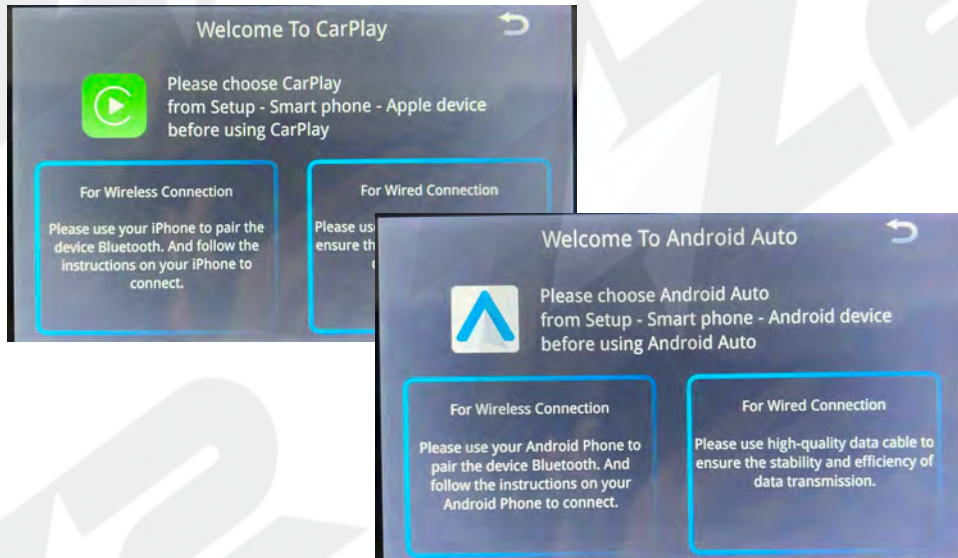


# ITZ-NIF Phone Pairing

Wireless CarPlay / Android Auto + Camera input for Nissan/  
Infiniti vehicles equipped with 8" touchscreen



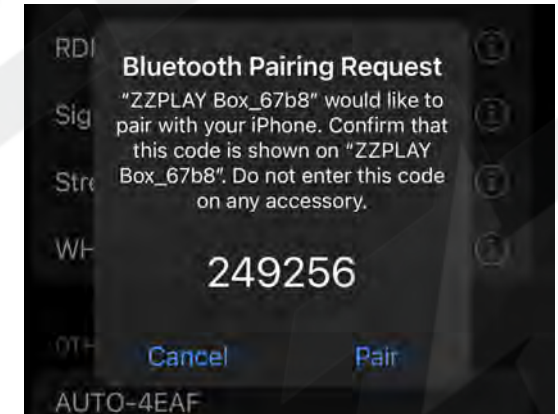
Connection for iPhone and Android phones is mostly the same process: Verify Bluetooth & WIFI is enabled. Then connect to the ZZPLAY unit through Bluetooth and once that connection is established, the system will create an Ad-Hoc WIFI connection automatically (in the background). For iPhone, this WIFI will prompt as 'Use CarPlay'



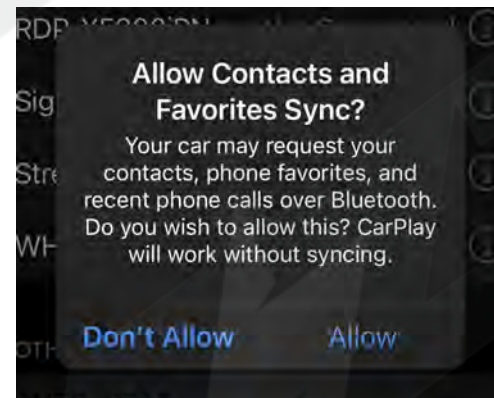
## Iphone Connection Example



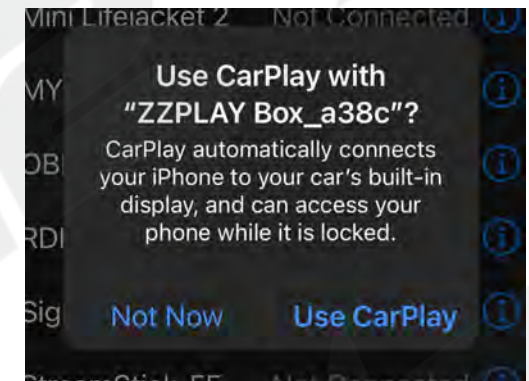
1. Go to Settings>Bluetooth, look under 'OTHER DEVICES' for 'ZZPLAY Box\_xxxx' and touch on it.



2. Press 'Pair' when the code is prompted.



3. Press 'Allow' for contacts to be shared.



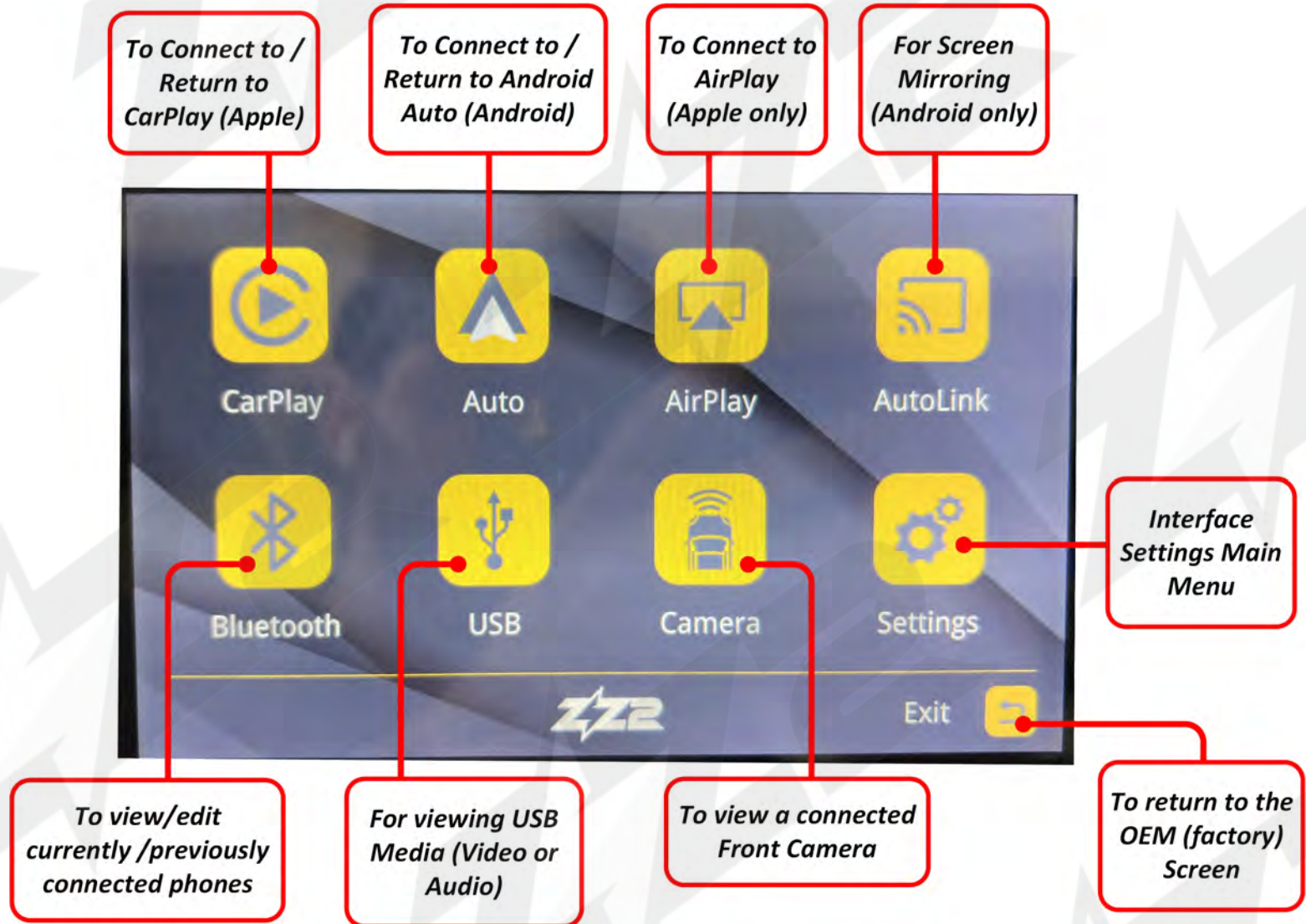
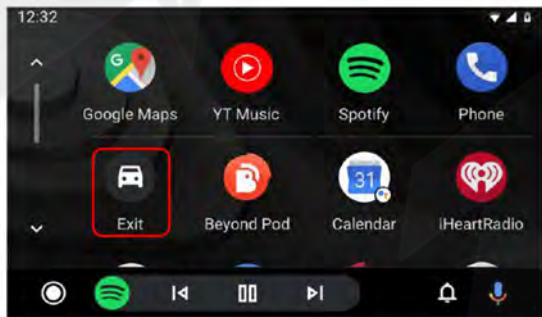
4. Wait for the 'Use CarPlay' prompt and select it - shortly after this CarPlay should load.



# ITZ-NIF Menu Overview

Wireless CarPlay / Android Auto + Camera input for Nissan/  
Infiniti vehicles equipped with 8" touchscreen

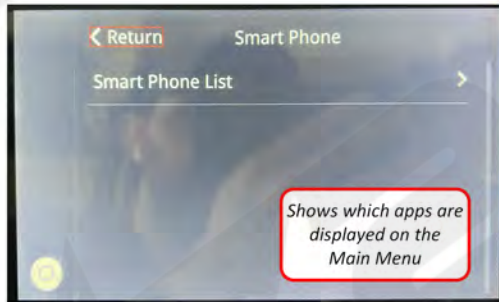
To gain access to the Interface menu, from within CarPlay/AA mode, and locate the exit tile, labeled as **'ZZPLAY'** for CarPlay or **'Exit'** for Android Auto. Selecting this tile will bring you in the interface setup menu, NOT the OE system.



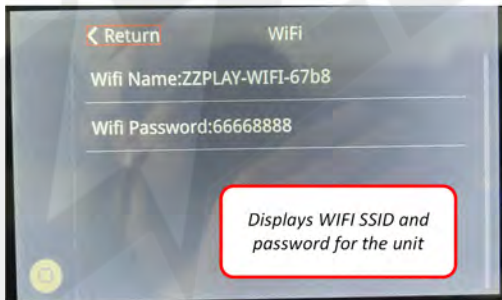
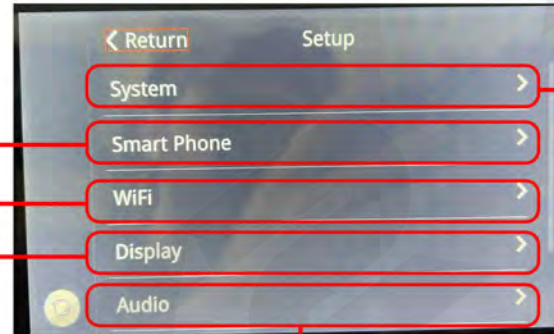
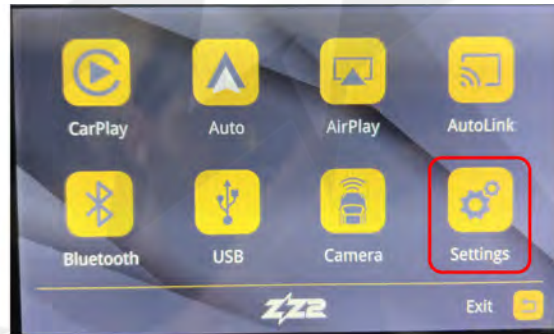


# ITZ-NIF Menu Options (1/2)

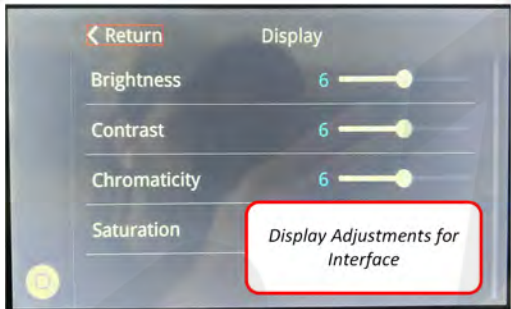
Wireless CarPlay / Android Auto + Camera input for Nissan/Infiniti vehicles equipped with 8" touchscreen



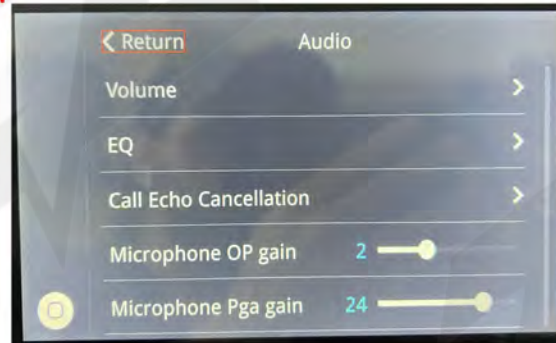
Shows which apps are displayed on the Main Menu



Displays WIFI SSID and password for the unit



Display Adjustments for Interface



**AUDIO SETTINGS:**  
These settings only apply if you use AUX input for audio from CarPlay/AA (not recommended). If using OEM Bluetooth (recommended), Audio is 100% handled via the factory radio audio settings.

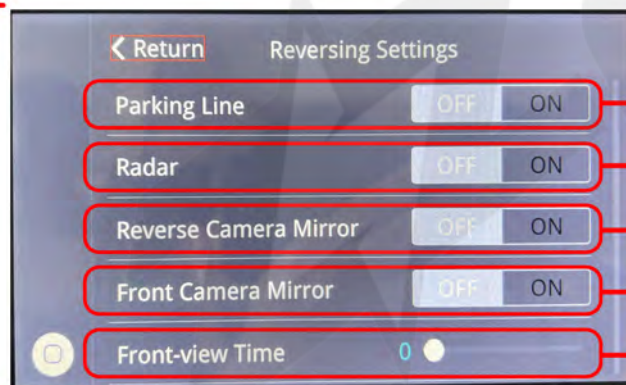
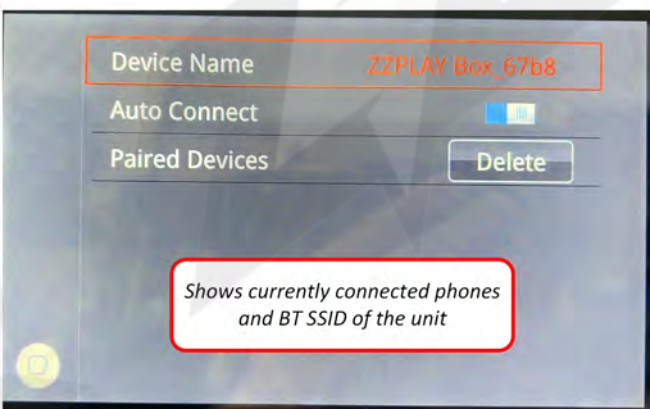
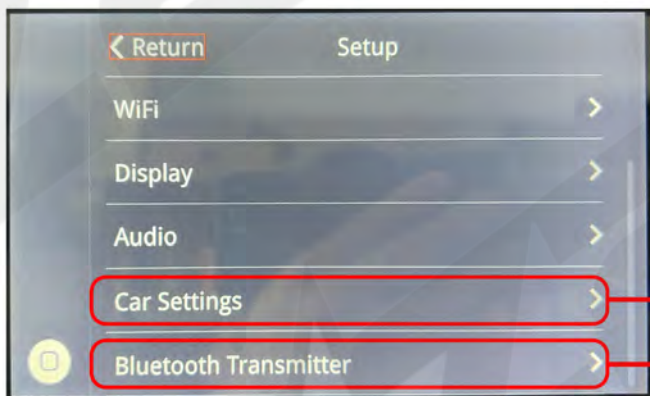
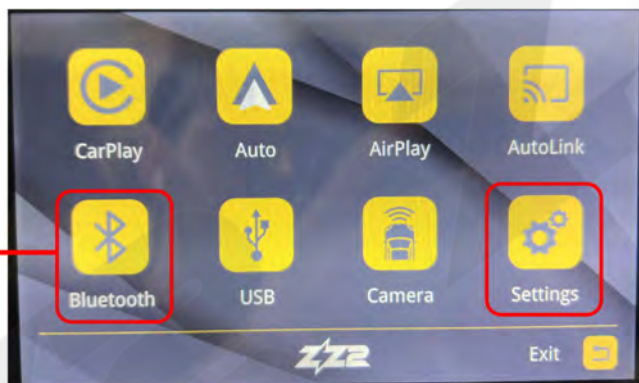


- Change Language for Interface Menus
- Flips CarPlay/AA for Right-Side Drive vehicles (EU, etc)
- Leave this ON. When ON, all audio from CarPlay/AA is routed to the OEM Bluetooth Audio stream source. You must connect the phone to the factory IOS/IO6 radio Bluetooth as well as the ZZPLAY interface.
- For Auto-Switching (screen)to CarPlay when the Phone connects.
- Leave this ON for reliability with Audio Routing.
- NOT USED. This feature is hard-coded to recognize ACC.
- Used to update the system/MCU firmware. Only use when requested to use from ZZ-2.
- For checking current system firmware.
- To reset to factory settings

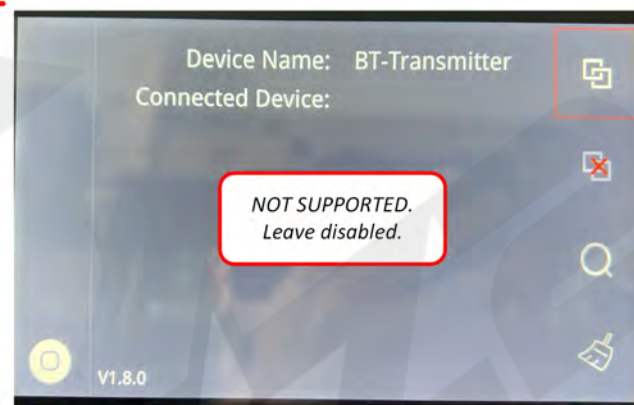


# ITZ-NIF Menu Options (2/2)

Wireless CarPlay / Android Auto + Camera input for Nissan/Infiniti vehicles equipped with 8" touchscreen



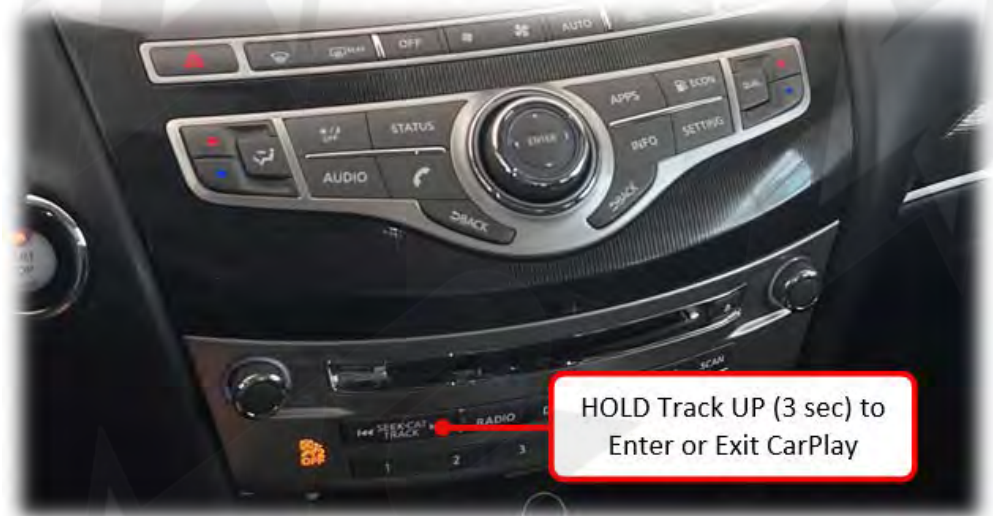
- Add or remove parking lines when adding a rear camera
- Add or remove sensor information when adding a rear camera
- Flip the rear camera image 180
- Flip the front camera image 180
- Time to show an added front camera (after leaving reverse gear)





# ITZ-NIF Operation

Wireless CarPlay / Android Auto + Camera input for Nissan/  
Infiniti vehicles equipped with 8" touchscreen



When a phone connects, the screen will flip automatically.



# ITZ-NIF FAQ

Wireless CarPlay / Android Auto + Camera input for Nissan/  
Infiniti vehicles equipped with 8" touchscreen

**Question:** *I can't hear any audio from the CarPlay/Android Auto system.*

**Answer:** Your OE system must be resting on Bluetooth audio mode in order to hear any sound from the kit, and the phone being paired must be connected to the factory Nissan/Infiniti Bluetooth system for Phone calls and audio. AUX is generally NOT used in this system.

**Question:** *Sometimes my phone won't connect lately / Sometimes when it connects the screen goes black / Sometimes CarPlay kicks me out back to the interface menu.*

**Answer:** For iPhone users, you must perform a 'Hard Reset' on the phone in use on average twice a month to clear certain cache and reset the processors (this will not wipe any data). Follow the steps (right image) and perform this task. After this is done, you will see a difference in speed and reliability (of pairing/connecting).

Perform a 'Hard Reset' (iPhone):

1. Press and Release Volume UP
2. Press and Release Volume DOWN
3. Press and HOLD the Main Power button for 20 seconds. IGNORE the 'Slide to Power Off' slider after a few seconds – wait until the Apple logo appears before letting go of the power button.
4. Test system when phone reboots. *NOTE: this will not erase personal phone data.*

**Question:** *Incoming text responses from SIRI are silent on CarPlay. It mutes the audio but I don't hear the read-out.*

**Answer:** This often happens for 2 reasons: The iPhone needs a hard-reset (see previous question), or the phone is connected to the vehicle's OE Bluetooth for both **phone calls & audio (and the text read-outs are being sent to the vehicle BT source - you're on AUX source)**. You want to be connected to the vehicle for phone calls ONLY - for iPhone the only way to make this distinction is to adjust the phone setup on the OE radio side. Find your phone (name) in the Bluetooth or Phone setup in the OEM radio settings and disconnect as an audio player. *NOTE: not all vehicles have this option, but it seems to happen mostly with cars that do have this option (Lexus, etc).*



**Question:** *Using Android, I cannot get the phone to reliably connect wirelessly (or at all).*

**Answer:** Android phones are more finicky and iPhones with their wireless connectivity. Make sure the OS is fully up-to-date. Clear the cache on the Android Auto application. The Android OS must be at least version 11. Some phones (TCL, Motorola) seem to have protocols that don't play nice with every system. If you run into this, use a good USB-C cable for the Android Auto Connection instead.



[support@zz-2.com](mailto:support@zz-2.com)

929-220-1212

Toll free: 877-241-2526

Extension 2: Tech Support

Agreement: End user agrees to use this product in compliance with all State and Federal laws. ZZDOIS LLC dba ZZ-2 is not to be held liable for misuse of its product. If you do not agree, please discontinue use immediately and return product to retailer. This product is intended for off-road use and passenger entertainment only.