



Package Contents

- Wireless-G PCI Adapter with RangeBooster
- Two Antennas
- Setup CD-ROM
- User Guide on CD-ROM
- Quick Installation

2.4GHz
802.11g **Wireless-G**

Wireless
**PCI Adapter
with RangeBooster**

Quick Installation



1 Begin Installation

IMPORTANT: Do not connect the Adapter to Your PC until you are instructed to do so in Step 2 or the Adapter will not install correctly.

The PCI Adapter with RangeBooster is installed and set up using the Setup Wizard that comes on the CD enclosed.

- A** To begin, insert the **Setup Wizard CD-ROM** into your CD-ROM drive. The Setup Wizard should run automatically, and the *Welcome* screen should appear.
- B** To install the Adapter, click **Click Here to Start** on the *Welcome* screen.
- C** After reading the License Agreement, click **Next** to continue the installation and Windows will begin copying the files onto your PC.
- D** The Setup Wizard will now prompt you to connect the Adapter to your PC's USB port.

Proceed to Step 2.



A



C

2 Connect the Adapter

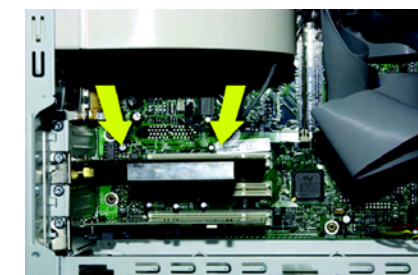
Now that the Setup Wizard has prompted you to connect the Adapter, follow the instructions below.

- A** Before connecting the PCI Adapter to your PC, turn off your desktop PC and unplug it.
- B** Open your PC case and locate an available PCI slot on the motherboard. Check with your computer manufacturer for instructions.
- C** Slide the PCI Adapter into the PCI slot. Make sure that all of its pins are touching the slot's contacts. You may have to apply a bit of pressure to slide the adapter all the way in. After the adapter is firmly in place, secure its fastening tab to your PC's chassis with a mounting screw. Then, close your PC and plug it back into the power.
- D** Attach the external antennas to the adapter's antenna ports. Bend the antennas up ninety degrees, then spread them apart ninety degrees, so they make a V or L shape.
- E** Power on your desktop PC.

Proceed to Step 3.



Connecting the Adapter



Adapter Installation Example

3 Set Up the Adapter

The next screen to appear will be the Available Wireless Network screen. From this screen, you can launch one of the two setup methods.

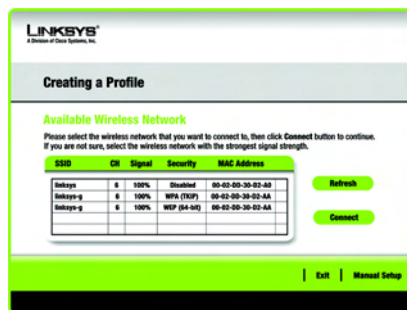
IMPORTANT: For Quick Installation, use this document only if your network appears on the Available Wireless Network screen.

Manual Setup: If you are utilizing Manual Setup, click the Manual Setup button and follow the on screen prompts.

Setting Up the Adapter with Available Networks

On the Available Wireless Network screen, the available networks are listed in the center table by SSID. Select the wireless network you wish to connect to and click the Connect button. (If you do not see your network listed, you can click the Refresh button.)

If the network utilizes wireless security, you will need to configure security on the Adapter. If not, you will be taken directly to the *Congratulations* screen, shown in Step B.



Available Wireless Network

A If wireless security has been enabled on this network, you will see a wireless security screen. If your network utilizes WEP (Wired Equivalent Privacy) encryption, the *WEP Key Needed for Connection* screen will appear. If your network utilizes WPA Personal (Wi-Fi Protected Access), the *WPA Personal Needed for Connection* screen will appear. If your network utilizes PSK2 (Pre-Shared Key 2) encryption, the *PSK2 Key Needed for Connection* screen will appear.

WEP Key Needed for Connection

Select **64-bit** or **128-bit**.

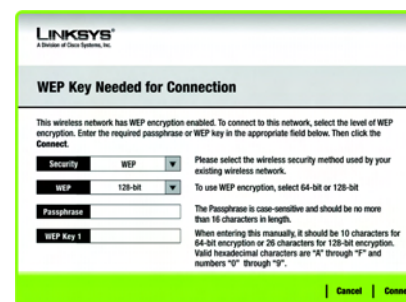
Then, enter a passphrase or WEP key.

Passphrase - Enter your network devices' passphrase in the *Passphrase* field. This is case-sensitive and should not be longer than 16 alphanumeric characters.

WEP Key - Enter your network devices' WEP key manually, if you don't want to enter a passphrase. For 64-bit encryption, enter exactly 10 hexadecimal characters. For 128-bit encryption, enter exactly 26 hexadecimal characters. Valid hexadecimal characters are "0" to "9" and "A" to "F".

Then, click **Connect** and proceed to Step B.

IMPORTANT: All of the devices on your network must use the same encryption method to work correctly.



WEP Key Needed

NOTE: Your passphrase is compatible with Linksys wireless products only. (Non-Linksys wireless products, require a WEP key to be entered.)

WPA Personal Needed for Connection

Encryption - Select your network devices' algorithm used: **TKIP** or **AES**, from the *Encryption* drop-down menu.

Passphrase - Enter your network devices' passphrase of 8-63 characters in the *Passphrase* field.

Click **Connect** and go to step B.

PSK2 Needed for Connection

Passphrase - Enter your network devices' passphrase of 8-63 characters in the *Passphrase* field.

Click **Connect** and go to Step B.

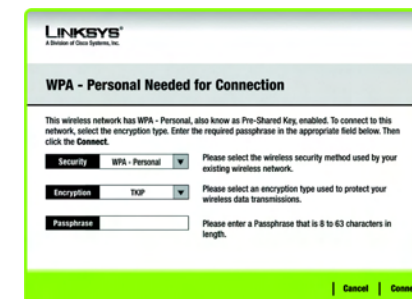
B After the Adapter has been configured for the network, the *Congratulations* screen will appear. Click **Connect to Network** to connect to your network.

Congratulations! Setup is complete.

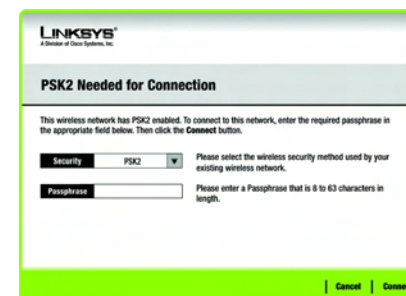
NOTE: After the Adapter is installed, the *Wireless Network Monitor* screen will open and its icon will appear in your PC's system tray. Double-click the icon if you want to open the *Wireless Network Monitor* for finding available wireless networks or making additional configuration changes.



Wireless Network Monitor icon



WPA Personal Needed



PSK2 Needed

LINKSYS[®]
A Division of Cisco Systems, Inc.

For additional information or troubleshooting help, refer to the User Guide on the Setup CD-ROM. You can also call or email for further support.

24-hour Technical Support
800-326-7114
(toll-free from US or Canada)

E-mail Support
support@linksys.com

Website
<http://www.linksys.com> or
<http://support.linksys.com>

RMA (Return Merchandise Authorization)
<http://www.linksys.com/support>

FTP Site
<ftp://ftp.linksys.com>

Sales Information
800-546-5797 (800-LINKSYS)

Linksys is a registered trademark or trademark of Cisco Systems, Inc. and/or its affiliates in the U.S. and certain other countries. Copyright © 2006 Cisco Systems, Inc. All rights reserved.

WMP54GR-qj-501219NC BW