

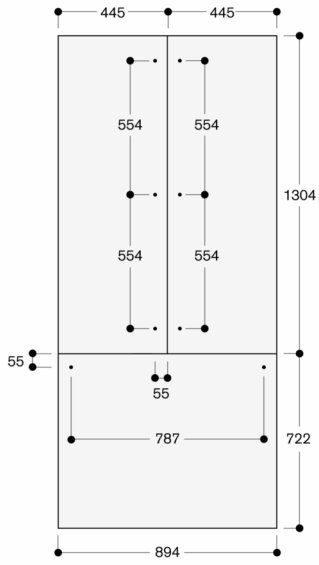
RVA421922

Door

RVA421922

- Door panels, dark brushed stainless steel, with handles.
- For RY 497, panel thickness 19 mm.
- Door panels, dark brushed stainless steel, with handles.
For RY 497, panel thickness 19 mm.

Niche width 900 mm

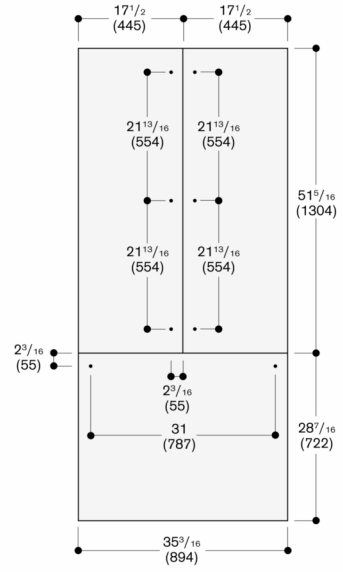


The door panel thickness is 19 mm

The maximum door panel dimensions are based on a clearance of 3 mm, based on a single niche

Measurements in mm

Niche width 35.5" (900 mm)



The door panel thickness is 3/4" (19 mm)

The maximum door panel dimensions are based on a clearance of 1/8" (3 mm), based on a single niche

Measurements in inches (mm)