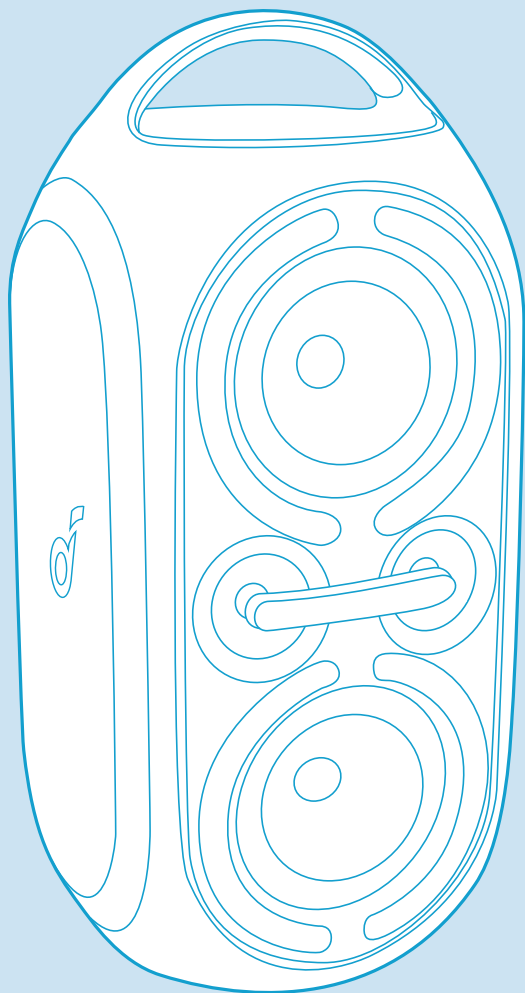


soundcore

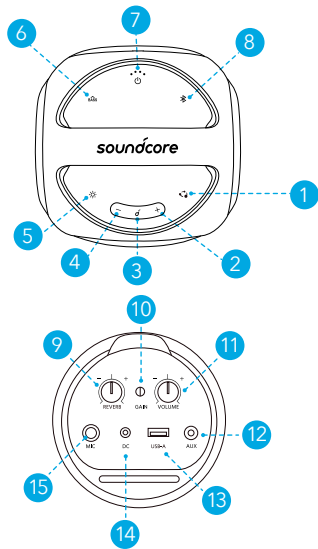
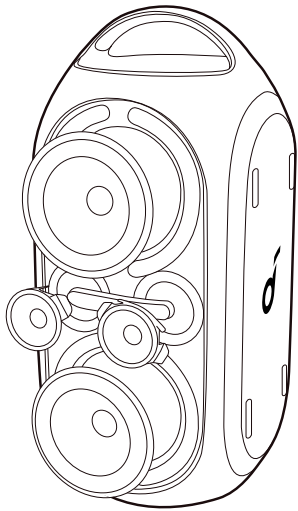


Soundcore Rave Party 2

USER MANUAL

English	01	Portugues do Brasil	111
Čeština	11	Русский	121
Dansk	21	Svenska	131
Deutsch	31	Türk	141
Español	41	日本語	151
Suomi	51	한국어	161
Français	61	简体中文	171
Italiano	71	繁體中文	181
Nederlands	81	لَعَرَبِيَّة	191
Norsk	91	עברית	201
Język polski	101		

At a Glance

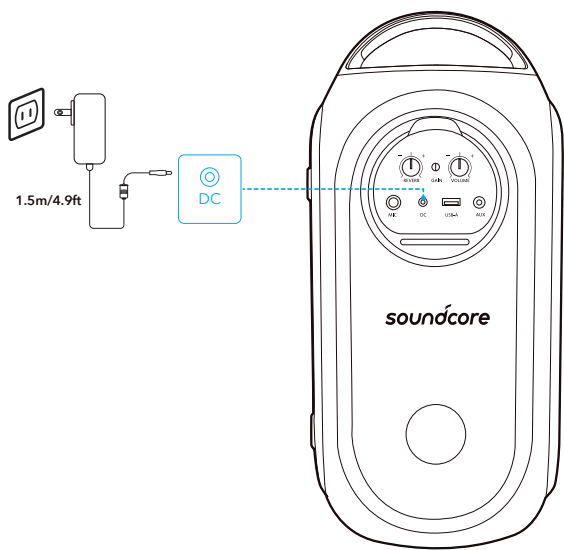


- 1. PartyCast
- 2. Volume up
- 3. Play/Pause
- 4. Volume down
- 5. Light mode
- 6. BassUp
- 7. Power
- 8. Bluetooth
- 9. Mic reverb
- 10. Mic gain
- 11. Mic volume
- 12. AUX
- 13. USB-A for USB playback and charging out
- 14. DC for charging in
- 15. Microphone

Charging

Charge your Speaker

Fully charge this speaker before the first use to prolong the lifespan of the built-in battery.



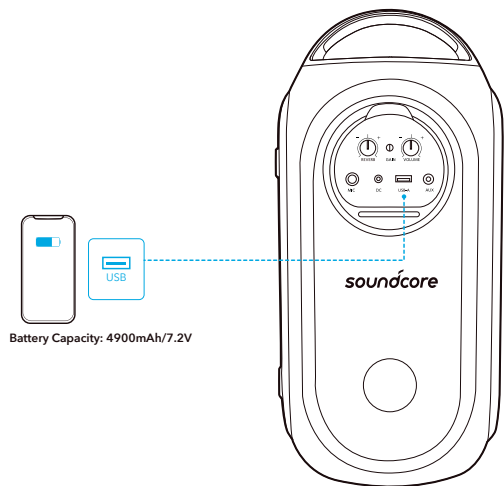
	Battery level < 25 %
	Battery level 25 % - 50 %
	Battery level 51 % - 75 %
	Battery level 76 % - 99 %
	Fully charged

Check Battery Level

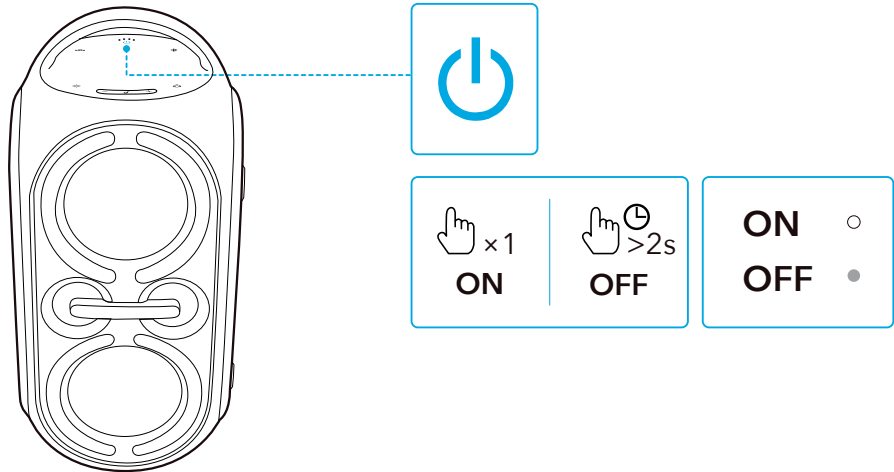
	Battery level < 10 %
	Battery level 10 % - 25 %
	Battery level 26 % - 50 %
	Battery level 51 % - 75 %
	Battery level 76 % - 100 %

Charge your USB Devices

Charge your USB devices through the USB port.



Powering On/Off



	Press once	Power on
	Steady white	
	Press and hold for 2 seconds	Power off
	Light off	

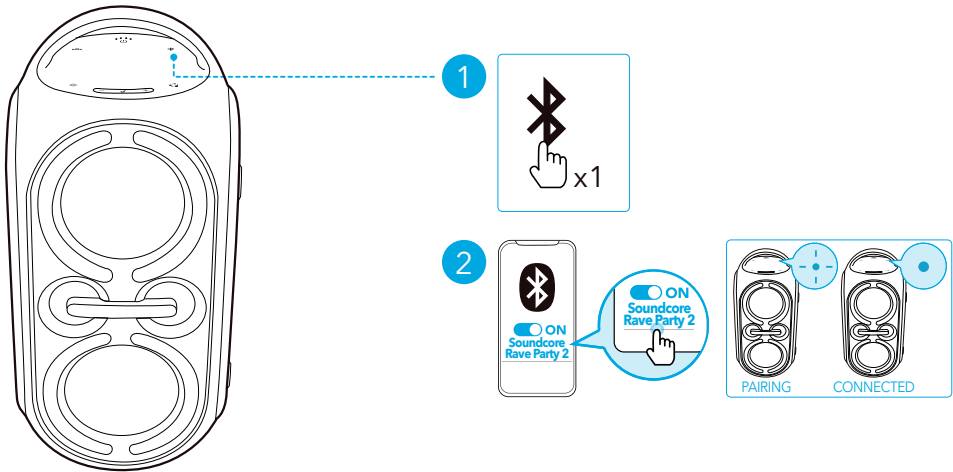


This speaker will power off automatically after 20 minutes if no device is connected.

Using Your Speaker

Bluetooth Mode

With this speaker, you can enjoy music through your Bluetooth-enabled devices.



	Press	Enter Bluetooth pairing mode
	Flashing blue	Bluetooth pairing
	Steady blue	Bluetooth connected

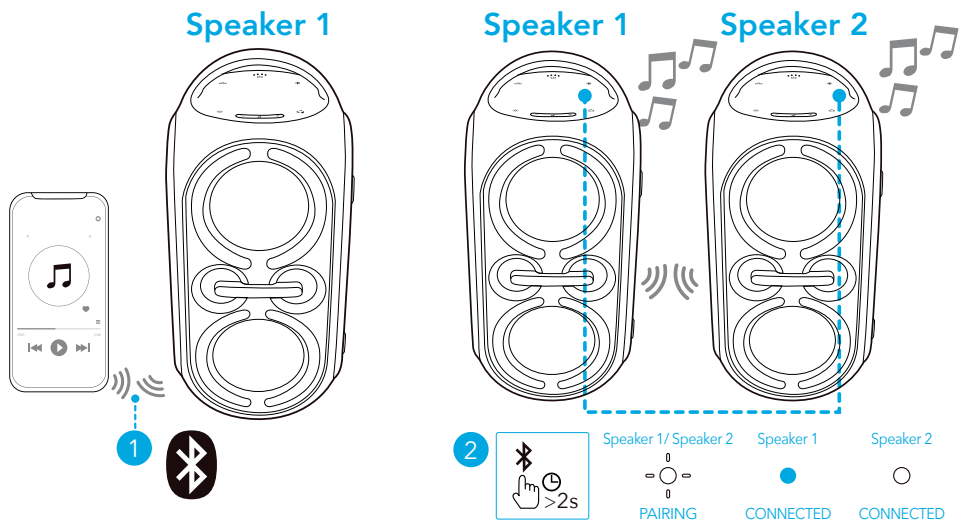


- This speaker can pair with 2 mobile devices via Bluetooth. To pair with another Bluetooth device, press the Bluetooth button once to re-enter Bluetooth pairing mode.
- This speaker can only play music on one mobile device at a time. To play from another connected device, pause the device that's currently active first.
- Each time you power on your speaker, it will automatically connect to your last connected device if available within the Bluetooth range. If not, press the Bluetooth button to enter Bluetooth pairing mode.

TWS (True Wireless Stereo) Mode

Two identical Rave Party 2 speakers can pair with each other for stereo sound. Both speakers can play the same audio (one as L channel and the other as R channel).

- 1. Connect either speaker with your Bluetooth device.
- 2. On both speakers, press and hold the Bluetooth button for at least 2 seconds to enter TWS pairing mode.



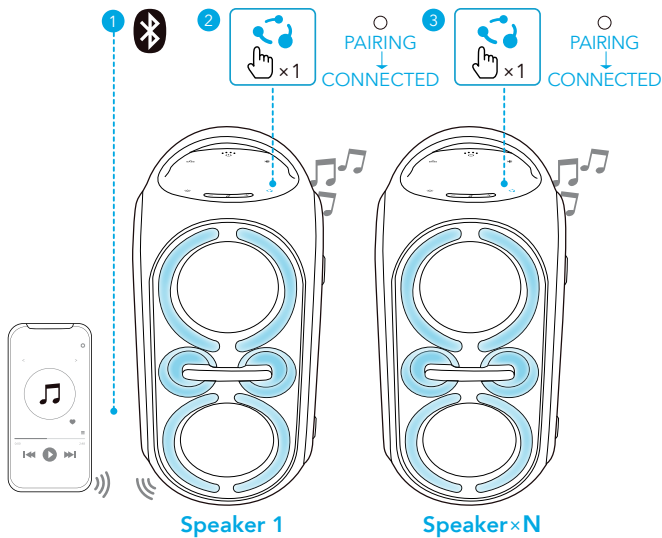
	Press and hold for at least 2 seconds	Enter TWS pairing mode
	Flashing white	TWS pairing
	Steady blue (Speaker 1)	TWS connected
	Steady white (Speaker 2)	




To exit TWS mode, press and hold the Bluetooth button for at least 2 seconds.

PartyCast Mode

- You can wirelessly connect up to 100 identical Rave Party 2 speakers together.
1. Connect a Rave Party 2 speaker with your smartphone or tablet as Speaker 1.
 2. Press the PartyCast button once on Speaker 1 and all the additional speakers to enter the pairing mode. When successfully connected, you will hear a prompt sound.



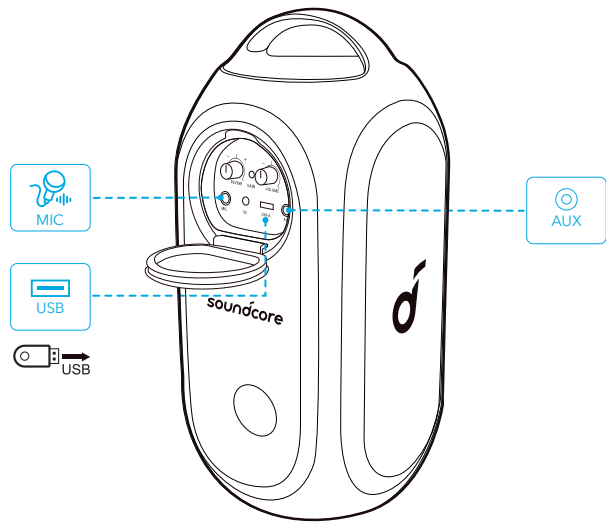
	Press once	Enter PartyCast pairing mode
	Steady white	PartyCast pairing
		PartyCast connected



- PartyCast 2.0 technology can sync up stereo sound and is compatible with PartyCast 1.0. Any Rave Party 2 speaker can connect with a speaker supporting PartyCast 1.0.
- To exit the PartyCast mode, press the PartyCast button once on any Rave Party 2 speaker.

MIC/USB/AUX Mode

Insert a microphone, a USB storage device, or a 3.5 mm audio cable.



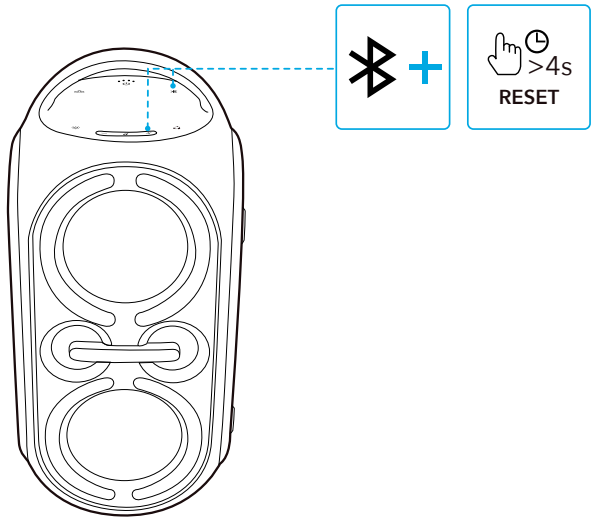
When using AUX mode, control audio playback via the connected device.

Button Controls

🎵		
🔊	Press once	Play/Pause
🔊	Press twice	Next track
🔊	Press three times	Previous track
⏮️/⏭️	Press or press and hold	Adjust volume
BASS	Press once	Turn BassUp on/off
🕒 REVERB	Turn the reverb knob	Adjust mic reverb
🕒 VOLUME	Turn the volume knob	Adjust mic volume

Reset

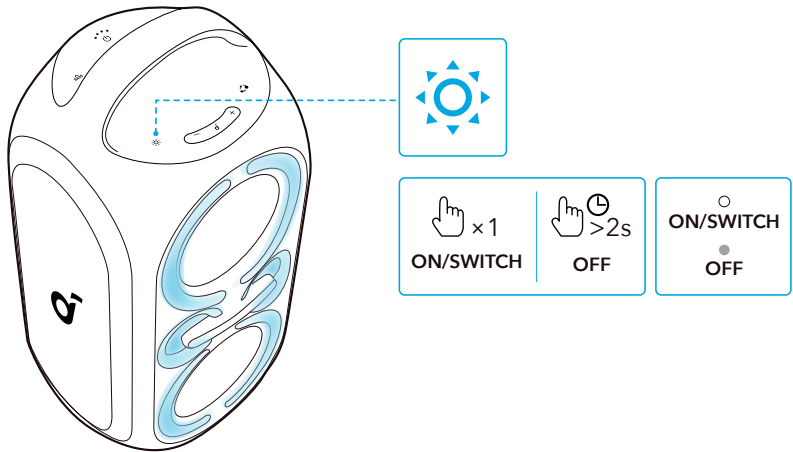
Press and hold the Bluetooth button and volume up button simultaneously for at least 4 seconds to reset the speaker.



Light Effects

Download the Soundcore app to check all available light modes.

- Campfire Vibes
- Neon Night
- Spring Break
- Euphoric Dance
- Romantic Stroll
- Flow
- Party



Soundcore App

Download the Soundcore app to enhance your experience.

Product information: Check the product name and software version, or read the user manual.

Firmware update: You will be informed once a new version of firmware is detected when you connect the speaker with the app.

Battery status: Indicates the remaining battery level of your speaker.

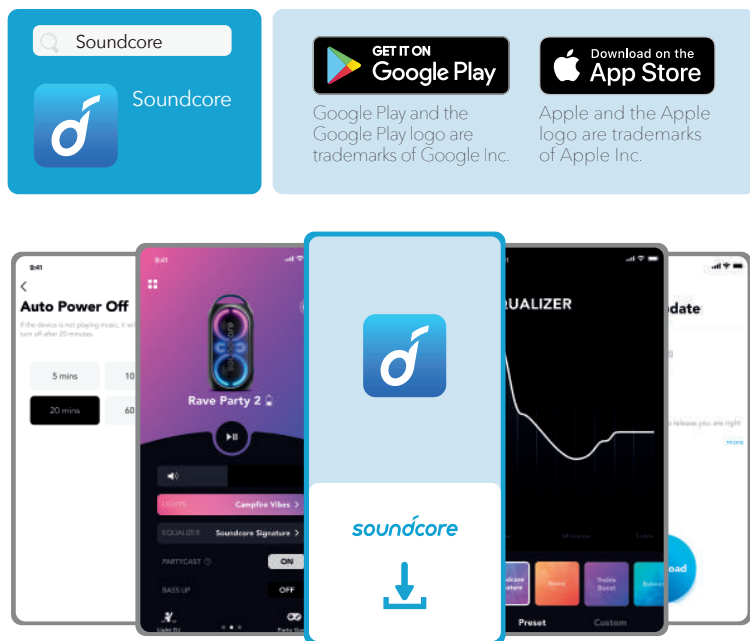
Volume control: Adjust the volume level via the app without pressing the buttons on the speaker.

EQ settings: There are 6 EQ settings you can choose from in the app to optimize your experience while enjoying different music genres.

- **Soundcore Signature:** Normal EQ mode with well-balanced sound.
- **Voice:** Voices stand out more clearly from other ambient sounds.
- **Treble Boost:** High frequencies are enhanced.
- **Balance:** No enhancement for high-frequency and low-frequency sounds.
- **Custom:** Customize the EQ setting to suit you in the app.
- **BassUp:** Turn on BassUp to enhance the low-frequency sound.

Set Auto-power off time: Set an auto-power off time (5/10/20/60 minutes, 20 minutes by default), the speaker will automatically power off when the time is up.

Voice prompt: Mute or restore the voice prompt while powering on/off.



Specifications

Specifications are subject to change without notice.

DC power input	12 V \pm 2 A
Battery capacity	4900 mAh/7.2 V
USB output	5 V \pm 2.1 A
Audio output power	120 W
Charging time	5.5 hours
Playtime (varies by volume level and music content)	Up to 16 hours
Waterproof level	IPX4
Bluetooth version	5.3
Bluetooth range	100 m
USB audio format	.mp3