

# KARPEN LUXURY

C O L L E C T I O N



## DOVE

LUXETOP™ | PLUSH



### THE PATENTED AIRELOOM LIFT™

We've pioneered a natural chamber between the springs and the mattress-top that allows every element to breathe. When the chamber meets the layers of plush materials, the bed completely synchronizes with your body. It can only be described as a lift.

Hand tufted design

### FABRIC/QUILT

- Matramatic design
- Belgian Jacquard Damask
- Wool / Cashmere Fibers
- Silk/Wool Fibers
- FR Fibers
- Graphite Visco
- Plush Convuluted Foam
- Stretch Knit Backing Fabric

### COMFORT LAYERS

- Plush CelsionPLUS™ TerraPur™ Latex
- Wool / Cashmere Fibers
- Slow recovery visco foam
- Micro coils 19 gauge
- Slow recovery visco foam
- Plush CelsionPLUS™ TerraPur™ Latex
- Micro coils 19 gauge
- Horsehair
- Wool / Alpaca Fibers
- Slow recovery TerraPur™ Latex
- Total micro coil count:  
King 4,800 | Queen 4,160

### SUPPORT SYSTEM

- High density encased perimeter support
- 8" Support-flex™ tempered 15 gauge individually wrapped coils
- Perimeter coil count:  
King 1,052 - Queen 842

### FOUNDATION

- 8-way hand tie foundation
- 9" or 6" profile available
- Adjustable base friendly



### WOOL/CASHMERE

This luxurious natural fibers blend cradles your body, helps regulate your body temperature, reduces pressure points and provides a sumptuous and exquisitely smooth feel.



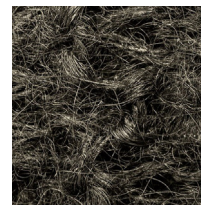
### CELSIONPLUS™ TERRAPUR™ LATEX

Expertly tailored for optimal support, our exclusive TerraPur™ Latex is hypoallergenic, breathable and delivers a unique buoyant quality which relaxes muscles and relieves tension.



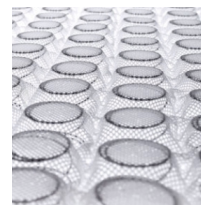
### WOOL/ALPACA FIBERS

Environmentally friendly, this natural fibers blend is very soft, light, hypoallergenic and anti-microbial. It wicks away moisture and offers extraordinary thermoregulatory properties for maximum comfort.



### HORSEHAIR

Strong, flexible and exotically sourced, lush horsehair acts as tiny springs. With natural antibacterial, anti-fungal and anti-mite properties, it guarantees an optimal temperature control.



### MICRO COILS

In combination with the other comfort layers, a double layer of tiny 19 gauge micro coils adds support and stability to the mattress as well as improves air flow for an optimized comfort.