

Apple TV

User's Guide

 Apple Computer, Inc.

© 2007 Apple Computer, Inc. All rights reserved.

Under the copyright laws, this manual may not be copied, in whole or in part, without the written consent of Apple.

The Apple logo is a trademark of Apple Computer, Inc., registered in the U.S. and other countries. Use of the "keyboard" Apple logo (Option-Shift-K) for commercial purposes without the prior written consent of Apple may constitute trademark infringement and unfair competition in violation of federal and state laws.

Every effort has been made to ensure that the information in this manual is accurate. Apple is not responsible for printing or clerical errors.

Apple

1 Infinite Loop

Cupertino, CA 95014-2084

408-996-1010

www.apple.com

Apple, the Apple logo, AirPort, iLife, iPhoto, iTunes, Mac, Macintosh, Mac OS, and QuickTime are trademarks of Apple Computer, Inc., registered in the U.S. and other countries.

Apple Store is a service mark of Apple Computer, Inc., registered in the U.S. and other countries.

iTunes Store is a service mark of Apple Computer, Inc.

Intel and Intel Core are trademarks of Intel Corp. in the U.S. and other countries.

PowerPC™ and the PowerPC logo™ are trademarks of International Business Machines Corporation, used under license therefrom.

Other company and product names mentioned herein may be trademarks of their respective companies. Mention of third-party products is for informational purposes only and constitutes neither an endorsement nor a recommendation. Apple assumes no responsibility with regard to the performance or use of these products.

Contents

5 Chapter 1: Welcome

6 Apple TV Components

7 What You Need to Set Up Apple TV

8 Apple TV at a Glance

11 Chapter 2: Getting Started

12 Setting Up Apple TV

17 Configuring Apple TV

19 Chapter 3: Managing Your Content

19 Importing Content into iTunes

20 Adding Movies, TV Shows, and Music

23 Adding Podcasts

24 Importing and Syncing Photos

27 Chapter 4: Using Apple TV

27 Using Your Apple Remote

30 Watching Video

33 Listening to Music, Audiobooks, and Podcasts

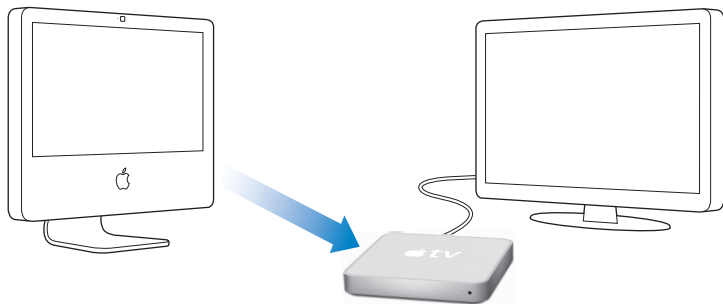
- 35 Viewing Photos
- 36 Changing Apple TV Settings
- 37 Using the Sources Menu
- 39 **Chapter 5: Tips and Troubleshooting**
- 43 Apple TV Status Light
- 45 **Chapter 6: Learning More, Service, and Support**
- 46 Finding Your Apple TV Serial Number
- 46 Important Care and Cleaning Information

Welcome

1

Congratulations on purchasing Apple TV. Read this section to learn about the features of Apple TV and what you need to set it up.

Buy movies, TV shows, music, and more from the iTunes Store, organize it all in your iTunes library, and enjoy it on Apple TV.



Apple TV Components



AC power cord



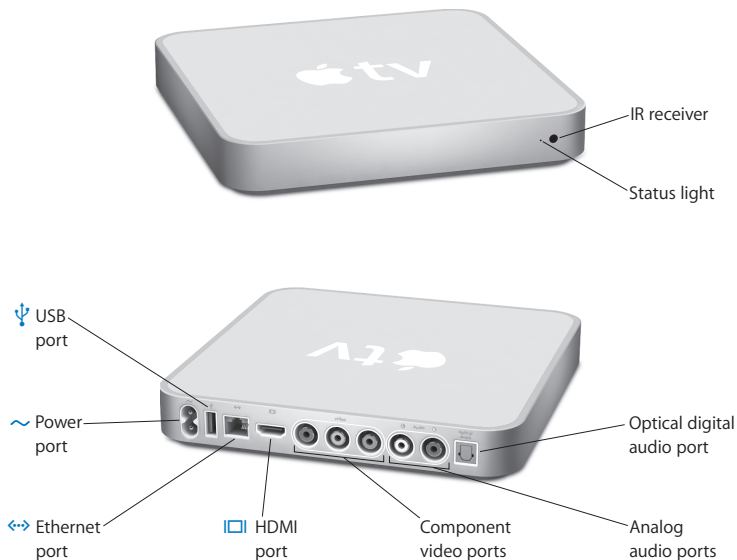
Apple Remote

Note: Your power cord may look different from the one pictured here.

What You Need to Set Up Apple TV

- A Macintosh computer with:
 - Mac OS X system software version 10.3.9, or 10.4.8 or later
 - 1 GHz Power PC G4 or G5, or an Intel processor
 - QuickTime 7.1.5 or later
 - 256 MB RAM
 - 16 MB video RAM, or
- A Windows-based computer with:
 - Windows XP (Home or Professional, with SP2)
 - 2.0 GHz Pentium processor or better
 - QuickTime 7.1.5 or later (included with iTunes 7.1)
 - 512 MB RAM
 - 32 MB video RAM
- iTunes 7.1 or later, which you can download from www.apple.com/itunes/download
- A widescreen, enhanced definition (ED), or high definition (HD) TV with an HDMI, DVI, or component video port and analog audio or optical digital audio ports
- An HDMI, HDMI-to-DVI, or component video cable and analog or optical digital audio cables (see “Connecting the cables” on page 12)
- An Ethernet or wireless network and a broadband Internet connection (DSL/Cable/LAN)
- An iTunes account and iTunes content, such as movies, TV shows, and music, is recommended

Apple TV at a Glance



Status light

The status light blinks amber when Apple TV starts up. When Apple TV is on, the status light is solid white. For more information about the status light, see “Apple TV Status Light” on page 43.

IR receiver

Use with the included Apple Remote to control Apple TV.

**Power port**

Plug the included AC power cord into Apple TV.

**USB port**

For service and diagnostics.

**Built-in WiFi/AirPort wireless**

Connect Apple TV to your wireless network.

**Ethernet port**

If you connect to your network using Ethernet, connect an Ethernet cable.

**HDMI port**

Connect Apple TV to a widescreen TV that has an HDMI port using an HDMI cable, or a DVI port using an HDMI-to-DVI cable.

Component video ports

Connect Apple TV to a widescreen TV that has component video (Y, Pb, and Pr) ports, using a component video cable with green, blue, and red connectors.

Analog audio ports

Connect Apple TV to a widescreen TV or home theater receiver with analog audio ports (red and white), using an analog audio cable.

Optical digital audio port

Connect Apple TV to a home theater receiver that has an optical digital audio port, using an optical digital audio (also called S/PDIF or TOSLINK) cable.

Use the information in this chapter to set up and configure Apple TV.

To get started you need to:

- Connect audio and video cables to Apple TV and your widescreen TV or home theater receiver
- Connect Apple TV to your wireless or Ethernet network
- Install the latest version of iTunes on your computer
- Sync the content of your iTunes library with Apple TV

You can connect Apple TV to a widescreen TV that has:

- An HDMI port using an HDMI cable for both video and audio
- Component video (Y, Pb, and Pr) ports using a component video cable with green, blue, and red connectors, and an audio cable
- A DVI port using an HDMI-to-DVI cable for video and an audio cable

You can also connect Apple TV to a home theater receiver.

Important: Read all of the following installation instructions and the safety information in the included *Apple TV Safety and Regulatory Compliance Information* booklet carefully before you plug Apple TV into a power outlet.

Setting Up Apple TV

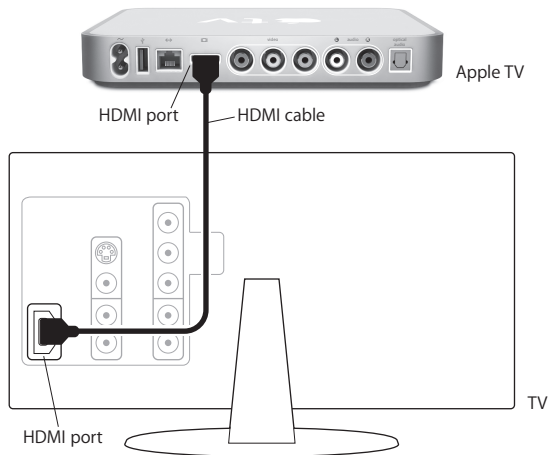
Before you begin, look at the back of your TV or receiver and find the audio and video ports. Make sure you have the appropriate cables for your setup.

Step 1: Connecting the cables

Choose the setup that matches the ports on your TV or receiver.

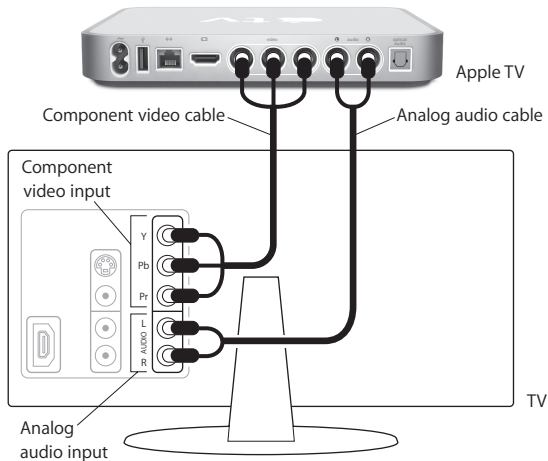
To connect a widescreen TV with an HDMI port:

- 1 Connect one end of an HDMI cable to the back of your TV.
- 2 Connect the other end to the back of Apple TV.



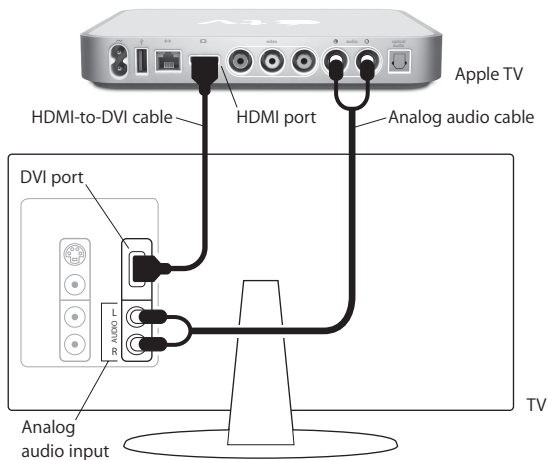
To connect a widescreen TV with component video and analog audio ports:

- 1 Connect the green, blue, and red connectors on one end of a component video cable to the Y, Pb, and Pr ports on your TV and the connectors on the other end to Apple TV.
- 2 Connect an analog audio cable, with red and white connectors, between Apple TV and your TV.



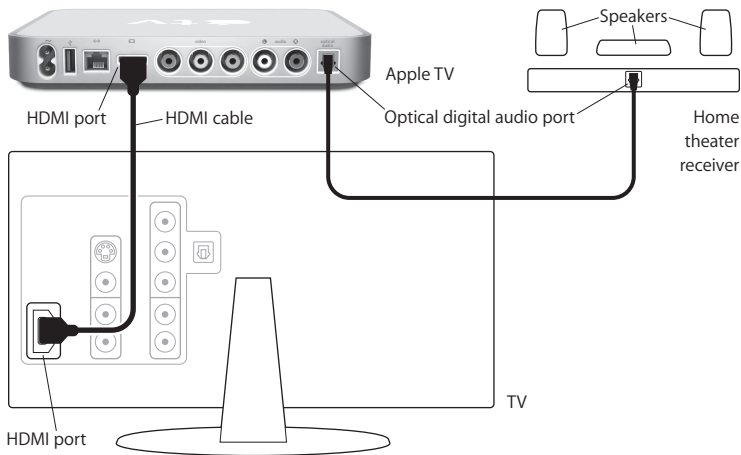
To connect a widescreen TV with a DVI video port

- 1 Connect an HDMI-to-DVI video cable to the DVI port on your TV and the HDMI port on Apple TV.
- 2 Connect an optical digital or analog audio cable between your TV and Apple TV.



To connect a widescreen TV and a receiver:

- 1 Connect an HDMI or component video cable between your TV and Apple TV.
- 2 Connect an optical digital or analog audio cable to your receiver and Apple TV.



Note: Alternatively, you can connect a video cable between Apple TV and your receiver and then connect a video cable between your receiver and TV.

Step 2: Connect an Ethernet cable (optional)

If you have a wireless network, you can skip this step. If you have an Ethernet network, connect an Ethernet cable from your network to the Ethernet port on the back of Apple TV.

Step 3: Connect the power cord

Plug one end of the power cord into the back of Apple TV and the other end into a power outlet.



Important: Don't place anything on top of Apple TV. Objects placed on top may cause interference with the wireless signal.

Step 4: Turn on your TV and select the input

The first time you use Apple TV it takes you through a series of steps including choosing a language, selecting a network, configuring Apple TV to work with your network if necessary, and connecting to iTunes. Simply follow the onscreen instructions as you refer to the following section.

Note: If you see just a black screen the first time you use Apple TV, make sure the input you've selected on your TV matches the input you've plugged the cables into on your TV or receiver. If the input matches, you might need to select a screen resolution your TV supports. See “Tips and Troubleshooting” on page 39, and see the documentation that came with your TV for information about its inputs.

Configuring Apple TV

Apple TV helps you select and configure your wireless network connection, choose a language, and connect to iTunes on your computer. You'll also update the iTunes software on your computer to the latest version.

Connecting to Your Wireless Network

Apple TV will help you connect to your wireless network. If you use a password to access your network, have it ready. Use the Apple Remote to enter:

- Your network from the list, or enter your network name if the network is hidden
- Your password (if you have one)
- Your IP address, subnet mask, router, and DNS address (if you're manually configuring your network)

To connect to your wireless network, follow the onscreen instructions.

Note: If you connect to a wired Ethernet network using DHCP, Apple TV automatically detects your network. If you don't connect using DHCP, you may have to enter your IP address, subnet mask, router, and DNS addresses. Choose a language, and then go to “Updating Your iTunes Software” in the next section.

Updating Your iTunes Software

To use Apple TV, you need iTunes 7.1 or later installed on your computer. You can download the latest version of iTunes at www.apple.com/itunes/download.

On a Mac, you can also use Software Update to update to the latest version of iTunes. To use Software Update, choose Apple (🍏) > Software Update.

To use iTunes 7.1 on a Mac, you need to update your system software to Mac OS v10.3.9, or 10.4.8 or later and update to QuickTime 7.1.5.

On a Windows-based computer, you can also go to iTunes Help to update to the latest version of iTunes. Open iTunes, and then choose Help > iTunes Help > check for updates.

To use iTunes 7.1 on a Windows-based computer, you need to be running Windows XP.

Connecting to iTunes

After you set up your network connection, your TV screen displays a five-digit passcode, which you'll need to enter in iTunes to sync or stream content to Apple TV.

To set up Apple TV with your iTunes library:

- 1 Open iTunes on your computer.
- 2 Select the Apple TV icon with “Click to set up” next to it in the Devices list.
- 3 Enter the 5-digit passcode from your TV screen.

After you enter your passcode, you can name your Apple TV and set up iTunes to manage your content.

Managing Your Content

3

Use iTunes to manage the movies, TV shows, music, and other content you purchase and download from the iTunes Store.

Organize your content in iTunes and watch or listen to it on Apple TV.

On Apple TV you can watch or listen to:

- Movies and TV shows you purchase from the iTunes Store
- Music in your iTunes library
- Audio and video podcasts you download or subscribe to in iTunes
- Audiobooks you purchase from the iTunes Store
- Slideshows with music and photo albums from your photo library

Importing Content into iTunes

To purchase movies, TV shows, music, and other content from the iTunes Store, set up an account in iTunes, find the items you want, and then buy them. They're automatically downloaded to the iTunes library on your computer. If you already have an Apple account, or if you have an America Online (AOL) account (available in some countries only), use that account to sign in to the iTunes Store and buy content.

For more information about iTunes, open iTunes and choose Help > iTunes Help.

Adding Movies, TV Shows, and Music

You can set up iTunes to add content to Apple TV in the following ways:

- Automatically sync content
- Sync selected content
- Stream content

Automatically Syncing Content

Syncing is the simplest way to add content to Apple TV. Syncing copies content from your iTunes library and stores it on Apple TV. By default, iTunes automatically syncs your content to Apple TV. Your computer doesn't have to be on to view content you sync to Apple TV. If you have a slow network, syncing is recommended.

Content is synced to Apple TV in this order:

- Movies
- TV shows
- Music
- Podcasts
- Photos

If your movies and TV shows fill Apple TV, for example, your music, podcasts, or photos are not added. Content is removed from Apple TV in reverse order, as needed. Syncing a new movie might result in photos and podcasts being removed from Apple TV.

To sync content:

- 1 On your computer, open iTunes and select Apple TV in the Devices list.
- 2 Choose the content you want to sync from the Movies, TV Shows, Music, or other tabs.
iTunes automatically syncs content whenever iTunes is open and Apple TV is on.

To turn off syncing:

- 1 On Apple TV, choose Sources in the main menu.
- 2 Select Syncing > Turn Off Syncing.

To sync Apple TV to a different iTunes library:

- 1 On Apple TV, choose Sources in the main menu.
- 2 Select Syncing > Change iTunes Library.

Content from the new iTunes library replaces the content that was on Apple TV.

Syncing Selected Content

Setting iTunes to sync selected content to Apple TV is useful if you have more content in your iTunes library than fits on Apple TV. Only the content you specify is synced to Apple TV. You can sync your most recent movie purchases or only movies you haven't watched, or create an iTunes playlist and sync that playlist.

To set iTunes to sync unwatched content:

- 1 On your computer, open iTunes and select Apple TV in the Devices list.
- 2 Click a tab, for example, Movies.
- 3 Select "Sync: ... unwatched movies" and choose the number you want from the pop-up menu.
- 4 Click Apply.

To set iTunes to sync selected content:

- 1 On your computer, open iTunes and select Apple TV from the Devices list.
- 2 Click a tab, for example, Movies.
- 3 Select “Sync movies.”
- 4 Choose “Selected Movies” or “Selected Playlists” from the pop-up menu.
- 5 Select the movies or playlists you want.
- 6 Click Apply.

Streaming Content

When you stream content, it isn’t stored on Apple TV. Streaming carries the content over your local network while you watch or listen to it. You can browse all of your content, no matter how large an iTunes library you have.

You can stream content from up to five iTunes libraries on your local network, in addition to the iTunes library Apple TV is synced with. However, you can stream from only one iTunes library at a time.

To stream content to Apple TV:

- 1 Open iTunes on the computer you want to stream from.
- 2 On Apple TV, choose Sources from the main menu.
- 3 Choose “Connect to New iTunes” and make a note of the passcode displayed.
- 4 In iTunes, select the Apple TV icon with “Click to set up” next to it.
- 5 Enter the passcode.

While content is being streamed, the computer must remain on and iTunes must remain open.

Note: The time it takes to begin viewing streaming video on Apple TV is dependent upon your network speed.

To stream content from a different library that's been set up for streaming, go to the Sources menu on Apple TV and then choose another library. If Apple TV is synced with an iTunes library, it is already set up to stream content from that library.

Adding Podcasts

Listen to audio podcasts or watch video podcasts from your iTunes library on Apple TV. Most podcasts are free, and you can download or subscribe to them from the iTunes Store. You don't need an iTunes Store account to download or subscribe to podcasts.

The settings for adding podcasts to Apple TV are unrelated to the settings for adding music. Podcast settings don't affect song settings, and vice versa. Set iTunes to automatically sync all podcasts or selected podcasts.

To set iTunes to automatically sync podcasts:

- 1 In iTunes, select the Apple TV icon in the Devices list.
- 2 Click the Podcasts tab.
- 3 In the Podcasts pane, select "Sync ... episodes of" and choose the number of episodes you want in the pop-up menu.
- 4 Click "All podcasts" or "Selected podcasts." If you click "Selected podcasts," also select the podcasts in the list that you want to sync.
- 5 Click Apply.

You can also stream podcasts from an iTunes library that you've set up for streaming.

Importing and Syncing Photos

Import digital photos to your computer and sync them to Apple TV. View photos individually or as a photo slideshow. Read this section to learn how.

To import photos to a Mac using iPhoto:

- 1 Connect the camera or photo card reader to your computer.
- 2 Open iPhoto if it doesn't open automatically.
- 3 Click Import.

Images are imported into iPhoto. You can import other digital images into iPhoto, such as images you download from the web. For information about importing and working with photos and other images, open iPhoto and choose Help > iPhoto Help.

iPhoto is available for purchase as part of the iLife suite of applications at www.apple.com/ilife. iPhoto might already be installed on your Mac, in the Applications folder.

If you don't have iPhoto, import photos using Image Capture.

To import photos to a Mac using Image Capture:

- 1 Connect the camera or photo card reader to your computer.
- 2 Open Image Capture if it doesn't open automatically.
- 3 To choose specific items to import, click Download Some. Or to download all items, click Download All.

To import photos to a Windows PC:

- Follow the instructions that came with your digital camera or photo application.

Syncing Photos to Apple TV

You can sync photos to Apple TV from iPhoto or from a folder on your hard disk. If you have a Mac and iPhoto 4.0.3 or later, you can add iPhoto albums automatically. If you have a Windows PC and Adobe Photoshop Album 2.0 or later, or Adobe Photoshop Elements 3.0 or later, you can sync photo collections automatically. You can't stream photos to Apple TV.

To sync photos from a Mac or Windows PC to Apple TV using a photo application:

- 1 In iTunes, select the Apple TV icon in the Devices list.
- 2 Click the Photos tab.
- 3 Select "Sync photos from: ..."
 - *On a Mac*, choose iPhoto from the pop-up menu.
 - *On a Windows PC*, choose Photoshop Album or Photoshop Elements from the pop-up menu.

Note: Some versions of Photoshop Album and Photoshop Elements don't support collections. You can still use them to sync all your photos.

- 4 If you want to sync all your photos, select "All photos and albums." If you want to sync photos from only some albums or collections, select "Selected albums" and select the albums or collections you want.
- 5 Click Apply.

To sync photos from a folder on your hard disk to Apple TV:

- 1 Drag the images you want into a folder on your computer.
If you want images to appear in separate photo albums on Apple TV, create folders inside the main image folder, and drag images into the new folders.
- 2 In iTunes, select the Apple TV icon in the Devices list.
- 3 Select “Sync photos from: . . .”
- 4 Choose “Choose Folder” from the pop-up menu and select your image folder.
- 5 Click Apply.

To delete photos from Apple TV:

- 1 In iTunes, select the Apple TV icon in the Devices list and click the Photos tab.
- 2 Select “Sync photos from: . . .”
 - *On a Mac*, choose iPhoto from the pop-up menu.
 - *On a Windows PC*, choose Photoshop Album or Photoshop Elements from the pop-up menu.
- 3 Choose “Selected albums” and deselect the albums or collections you want to delete.
- 4 Click Apply.

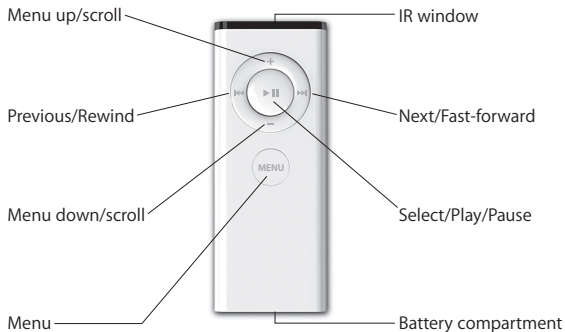
Using Apple TV

4

Read on to learn about using your remote, watching movies and TV shows, listening to music, and more on Apple TV.

Using Your Apple Remote

Use the Apple Remote to control Apple TV settings and navigate through your content. Make sure there are no obstructions between the remote and Apple TV.



Pairing Apple TV with a Remote

The Apple Remote works with the built-in IR receiver on Apple TV. You can set Apple TV to work only with the included remote by pairing Apple TV and the remote.

To pair Apple TV with the included remote:

- 1 Choose Settings from the Apple TV main menu.
- 2 Choose Pair Remote Control.

You can also press and hold **MENU** and **⏏** for 6 seconds to pair Apple TV and the remote.

When you've successfully paired your Apple Remote, Apple TV displays a chainlink (⌂) symbol above a picture of a remote. Apple TV now works only with the paired remote.

Unpairing Apple TV with a Remote

If you lose the Apple Remote that you paired with Apple TV, you can use any Apple Remote to unpair Apple TV from the lost remote by pressing and holding **MENU** and **⏏** for 6 seconds. You can also follow these steps.

To unpair Apple TV with a previously paired remote:

- 1 Choose Settings from the Apple TV main menu.
- 2 Choose Unpair Remote.

When you've successfully unpaired the lost remote, Apple TV displays a broken chainlink (⌂) symbol above a picture of a remote. You can now pair Apple TV with a new remote.

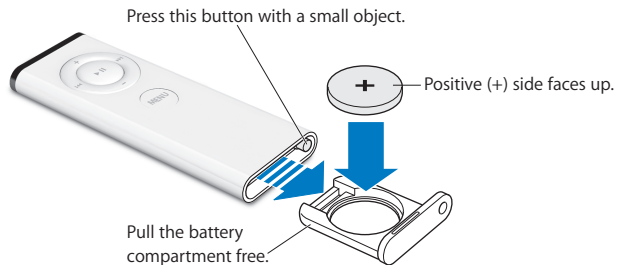
Basic Remote Functions

Your Apple Remote has a few basic functions described below.

To	Do this
Move through the menu options	Press + or -
Select an option from a menu	Press ▶
Return to a previous menu	Press MENU
Return to the main menu	Press and hold MENU
Put Apple TV in standby mode	Press and hold ▶ for about 6 seconds
Reset Apple TV	Press and hold MENU and - for about 6 seconds

Changing the Remote Battery

When the battery charge in your Apple Remote is low, Apple TV displays a picture of a remote and a warning (⚠) symbol. Replace the battery with a CR2032 battery.



To replace the battery:

- 1 Open the battery compartment by pressing the button with a small object until the compartment is partially ejected.
- 2 Pull the battery compartment out and remove the battery.
- 3 Insert the replacement battery with the positive (+) side facing up.
- 4 Reinsert the battery compartment into the remote.
- 5 Dispose of the used battery according to your local environmental laws and guidelines.

Watching Video

You can watch movies, TV shows, music videos, and video podcasts on Apple TV. Movies and TV shows are in their respective menus on Apple TV. Music videos are in the Music menu and video podcasts are in the Podcasts menu.

To watch video, use the remote as described below.

To	Do this
Play or pause	Press ►
Fast forward	Press and hold ►► to fast forward; press ►► again to increase the fast-forward speed
Move forward or back in slow motion	Press ► and then press and hold ►► or ◀◀
Skip forward or back in 10 second increments	Press ► and then press ►► or ◀◀
Rewind	Press and hold ◀◀ to rewind; press ◀◀ again to increase the rewind speed
Skip to the next or previous chapter	Press ►► or ◀◀

Movies

In the Movie menu, you have a choice of watching:

- Previews of movies available on the iTunes Store
- Trailers of movies in theaters
- Movies in your iTunes library that you sync or stream to Apple TV

Movies are listed by title. Use **+** or **-** on the remote to choose a movie. You'll see the title and other information about the movie. Press **▶** to watch the movie.

TV Shows

Purchase and download your favorite TV shows from the iTunes Store and watch them on your TV. In the TV Shows menu, you have a choice of watching:

- Previews of TV shows available on the iTunes Store
- TV shows in your iTunes library that you sync or stream to Apple TV

You can choose your TV shows by the date they were downloaded or by the title. Press **▶▶** or **◀◀** on the remote to toggle between viewing by date or by show. When you choose a TV show, you'll see the title and other information about the show. Press **▶** to watch the show.

Music Videos

You can purchase your favorite music videos from the iTunes store and watch them on Apple TV.

To watch music videos:

- 1 Choose Music from the Apple TV menu.
- 2 Choose Music Videos, and then select a music video.
- 3 Press ► on the remote to watch the music video.

Video Podcasts

You can watch the video podcasts in your iTunes library on Apple TV. Most podcasts are free and you can download or subscribe to them from iTunes.

To watch video podcasts:

- 1 Choose Podcasts from the Apple TV menu, and then choose a show.
- 2 Choose an episode to play.
- 3 Press ► on the remote to watch the podcast.

If the podcast you're watching has chapters, press ► to skip to the next chapter in the podcast or press ◀ to skip to the beginning of the current chapter.

Note: You don't need an iTunes Store account to download or subscribe to podcasts.

For information about podcasts, open iTunes and choose Help > iTunes Help. Then search for "podcasts."

Listening to Music, Audiobooks, and Podcasts

Import songs and other audio into your iTunes library on your computer and listen to them on Apple TV. You can also listen to audiobooks purchased from the iTunes Store and audio podcasts.

To listen to music and other audio, use the remote as described below.

To	Do this
Play or pause a song, audiobook, or podcast	Press ►
Skip to the next song	Press ►►
Fast forward though a song, audiobook, or podcast	Press and hold ►►
Rewind a song, audiobook, or podcast	Press and hold ◀◀
Skip to the next song	Press ►►
Restart a song or play the previous song	Press ◀◀ to restart a song; press ◀◀ twice to skip to the previous song

From the Music menu, you can choose songs by playlist, artist, album, song, genre, or composer. To listen to songs in random order, select Shuffle Songs.

Viewing Album Artwork

By default, iTunes displays album artwork on Apple TV. If artwork is available, you'll see it on Apple TV when you play music from the album.

For information about album artwork, open iTunes and choose Help > iTunes Help.

Audiobooks

To listen to audiobooks that you purchased from the iTunes store, choose Audiobooks in the Music menu.

If you stop listening to an audiobook on Apple TV and go back to it later, the audiobook begins playing from where you left off. If the audiobook you're listening to has chapters, you can press **⏮** on the remote to skip to the next chapter. Press **⏮** on the remote to skip to the beginning of the current chapter or to the previous chapter in the audiobook.

Note: Audiobooks from sources other than the iTunes Store don't work with Apple TV.

Audio Podcasts

You can listen to the audio podcasts in your iTunes library on Apple TV. Most podcasts are free in iTunes and you don't need an iTunes Store account to download or subscribe to them.

To listen to an audio podcast:

- 1 Choose Podcasts from the Apple TV menu, and then choose a podcast.
- 2 Choose an episode to play.
- 3 Press **▶** on the remote to listen to the podcast.

During an audio podcast, the screen displays the episode, name of the show, author or provider, along with elapsed and remaining time. If the podcast includes artwork, you'll see it onscreen. Podcast artwork can change during an episode, so you might see several pictures during the podcast.

If the podcast you're watching has chapters, press ► to skip to the next chapter or press ◀ to skip to the beginning of the current chapter.

For information about podcasts, open iTunes and choose Help > iTunes Help. Then search for "podcasts."

Viewing Photos

View photos on Apple TV as albums or as a slideshow with music.

To view photos on Apple TV:

- 1 Choose Photos from the Apple TV menu.
- 2 Choose the album or slideshow you want to view.
- 3 Press ► on the remote to watch the slideshow.

To view photos or watch a slideshow, use the remote as described below.

To	Do this
Play or pause a slideshow	Press ►
Skip to the next photo	Press ►►
Skip back to the previous photo	Press ◀◀

Changing Apple TV Settings

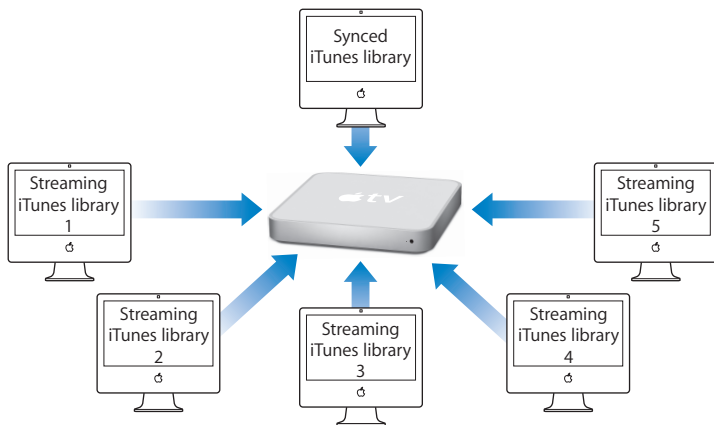
Use the Settings menu to manage Apple TV settings.

Choose	To do this
About	View the name of your Apple TV, as well as the available space, the serial number, information about your TV connection and resolution, and more
TV Resolution	Select a screen resolution your TV supports
Network	View, configure, or change your Ethernet or wireless network settings
Screen Saver	Choose the type of screen saver and how quickly it turns on
Sound Check	Turn sound check on to adjust the volume of the music on Apple TV so that it's all at the same level
Sound Effects	Turn sound effects on to hear sounds from Apple TV when you're clicking through menus, for example
Repeat Music	Turn repeat music on or off
Pair Remote	Pair or unpair your Apple Remote with Apple TV
Update Software	See if any updates are available for Apple TV
Language	Choose a language
Legal	View the legal requirements for Apple TV
Reset Settings	Reset Apple TV to its original settings

Using the Sources Menu

Use the Sources menu to switch between synced and streaming content. To view synced content, choose Sources from the Apple TV main menu, and then select Apple TV to access your content. You can also stream content from other iTunes libraries on your network.

You can stream content to Apple TV from the iTunes library you've set up for syncing and from up to five additional iTunes libraries on your network. Make sure iTunes is open on the computer you want to stream content from.



To stream content from another iTunes library:

- 1 Select “Connect to New iTunes” from the Apple TV Sources menu.
- 2 Make a note of the passcode on your TV screen.
- 3 Open iTunes on your computer.
- 4 Select the Apple TV icon with “Click to set up” next to it in the Devices list.
- 5 Enter the 5-digit passcode from your TV screen.

Choose Sources from the Apple TV main menu, and then select the name of the iTunes library you want to access.

Most problems with Apple TV can be solved quickly by following the advice in this chapter.

When you have a problem with Apple TV, there's usually a quick and simple solution. First, make sure:

- The audio and video cables between Apple TV and your TV are pushed in all the way.
- The power cords for Apple TV and your TV are securely connected to a working power source.
- Your TV is turned on and switched to the correct input.
- Apple TV is connected to the network. Go to the Settings menu on Apple TV, select Network, and see if Apple TV has an IP address.
- Your network and Internet connections are on and working properly.

If you are still having trouble, you can try to reset your equipment by unplugging Apple TV, your TV, your wireless networking equipment or AirPort Base Station, and your router from the power outlet. Wait 30 seconds and then plug everything back in again.

If your TV screen appears fuzzy or black:

- Make sure you're using the correct video cables (see page 12) and that they are connected firmly to Apple TV and to your TV.
- Make sure the input setting you've selected on your TV matches the input you have your video cables connected to. See the documentation that came with your TV for more information.

If your TV screen still appears fuzzy or black, you may need to select a video mode your TV supports.

To select a video mode:

- 1 Press and hold both **MENU** and **+** on the Apple Remote for about 6 seconds. Apple TV cycles through display resolutions.
- 2 When Apple TV reaches an acceptable display resolution and "If you can see the Apple logo, select OK" appears on your TV screen, press **►**.

If you can see a picture but Apple TV isn't responding:

- Press and hold **MENU** on the Apple Remote to return to the Apple TV main menu.
- Reset Apple TV by unplugging it from the power outlet, waiting about five seconds, and plugging it in again. You can also press and hold both **MENU** and **-** on the Apple Remote for about 6 seconds to reset Apple TV. Your movies and other content will remain on Apple TV.
- Make sure your TV is turned on and functioning correctly. See the documentation that came with your TV for more information.
- If you paired an Apple Remote with Apple TV, make sure you're using the paired remote. See "Pairing Apple TV with a Remote" on page 28.

If you can't hear sound:

- If Apple TV is connected to a receiver, make sure the receiver is turned on.
- Make sure the input setting you've selected on your receiver matches the input you have your audio cables connected to. See the documentation that came with your receiver for more information.
- Make sure the volume on your TV or receiver is turned up and isn't muted.
- Make sure you're using the correct audio cable (see page 12) and that it's connected firmly to Apple TV and to your TV.
- If you're connected to the HDMI port on your TV and Apple TV, make sure your TV supports audio through its HDMI port. The HDMI ports on some older TVs support only video.

If the remote isn't working:

- If you've paired Apple TV and an Apple Remote, make sure you're using the paired remote:
 - If you're using the paired remote and the Apple TV status light flashes white, the problem isn't with the remote. See "If you can see a picture but Apple TV isn't responding:" on page 40.
 - If you're using an unpaired remote, the Apple TV status light flashes amber.
- If you've paired Apple TV and an Apple Remote, and you can't find the paired remote, set Apple TV to work with any remote by pressing and holding **MENU** and **⏏** for 6 seconds.
- Point the remote directly at Apple TV.
- Make sure the IR receiver on the front of Apple TV isn't blocked.

- If Apple TV displays a picture of a remote and a warning (⚠) symbol, you need to replace the battery in the remote. See “Changing the Remote Battery” on page 29.

If Apple TV doesn't appear in iTunes:

- Make sure Apple TV is turned on and connected to your network. Go to the Settings menu on Apple TV, select Network, and see if Apple TV has an IP address.
- Choose Preferences in iTunes, click Apple TV, and make sure “Look for Apple TVs” is selected.
- If Firewall is on (in the Sharing pane of System Preferences), make sure “Apple TV Sharing” is selected to allow content to pass through the firewall.

If other Apple TVs show up periodically in your iTunes Devices list:

- This means that iTunes has found other Apple TVs on your network.
- To prevent this, choose Preferences in iTunes, click Apple TV, and make sure “Look for Apple TVs” is not selected.

If Apple TV isn't playing your photo albums or slideshows:

- Make sure you have photos in your photo library or in a folder on your computer. See “Syncing Photos to Apple TV” on page 25.

If Apple TV still doesn't respond, try restoring it to the original factory settings:

- Press and hold both **MENU** and **–** on the Apple Remote for 6 seconds or until the status light blinks amber.
- Choose a language.
- Choose Factory Restore.

During a factory restore, the progress indicator (a spinning gear) may spin for a while, so be patient.

Apple TV Status Light

Apple TV has a status light on the front that indicates what's happening.

If Apple TV is	The status light
On	Is solid white
Off or in standby	Is off
Starting up	Blinks amber
Accepting a command from the remote	Flashes white once
Rejecting a command from the remote (you've paired a remote with Apple TV but you're using a remote that's not paired)	Flashes amber once
Having problems, refer to "Obtaining warranty service" on page 45	Alternates between white and amber

Learning More, Service, and Support

6

More information about using Apple TV is available in onscreen help and on the web. The following table describes where to get software and service information.

To learn about	Do this
Service and support, discussions, tutorials, and Apple software downloads	Go to: www.apple.com/support/appletv
Using iTunes	Open iTunes and choose Help > iTunes Help. For an onscreen iTunes tutorial (available in some areas only), go to: www.apple.com/support/itunes
Using iPhoto (in Mac OS X)	Open iPhoto and choose Help > iPhoto Help.
The latest Apple TV information	Go to: www.apple.com/appletv
Safety and regulatory compliance information	See the <i>Apple TV Safety and Regulatory Compliance Information</i> booklet that comes with Apple TV.
Obtaining warranty service	First follow the advice in this booklet, the <i>Apple TV Safety and Regulatory Compliance Information</i> booklet, the onscreen help, and online resources. If the unit still doesn't function, go to www.apple.com/support/appletv for information about how to obtain warranty service.
Registering Apple TV	Go to: www.apple.com/register

Finding Your Apple TV Serial Number

The serial number is printed on the bottom of Apple TV. You can also find the serial number in the Apple TV Settings menu. On Apple TV, choose Settings > About.

Important Care and Cleaning Information

WARNING: Failure to follow these care and cleaning instructions could result in damage to Apple TV or other property.

Using Connectors and Ports

Never force a connector into a port. Check for obstructions on the port. If the connector and port don't join with reasonable ease, they probably don't match. Make sure that the connector matches the port and that you have positioned the connector correctly in relation to the port.

Keeping Apple TV Within Acceptable Temperatures

Operate Apple TV in a place where the temperature is always between 0° and 40° C (32° to 104° F).

Keeping the Outside of Apple TV Clean

To clean Apple TV, unplug the power cord and all cables. Then use a soft, slightly damp, lint-free cloth. Avoid getting moisture in openings. Don't use window cleaners, household cleaners, aerosol sprays, solvents, alcohol, ammonia, or abrasives to clean Apple TV.

Disposing of Apple TV Properly

For information about the proper disposal of Apple TV, and other important regulatory compliance information, see the *Apple TV Safety and Regulatory Compliance Information* booklet.

