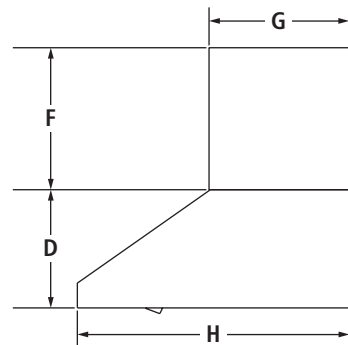
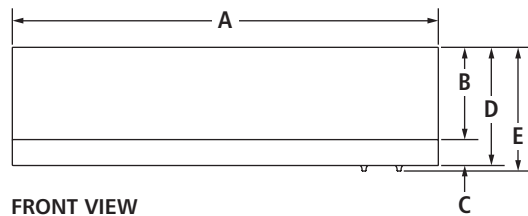


36"/30" PRO-STYLE™ LOW PROFILE UNDER CABINET HOODS

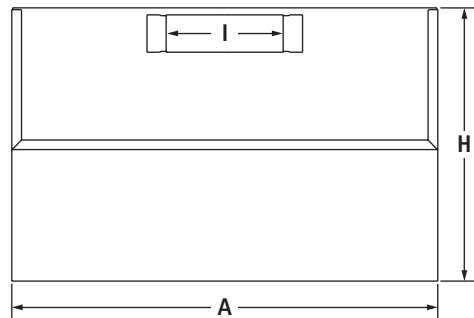
JXU9136WP – 36" x 10½" x 23"

JXU9130WP – 30" x 10½" x 23"

PRODUCT DIMENSIONS



(shown with optional duct cover)



MODEL #		JXU9136WP		JXU9130WP	
		in	cm	in	cm
A	Overall width	36	91.4	30	76.2
B	Height without trim	8	20.3	8	20.3
C	Height of trim	2	5.1	2	5.1
D	Height without controls	10	25.4	10	25.4
E	Height with controls	10½	26.7	10½	26.7
F	Height of optional duct cover	12	30.5	12	30.5
G	Depth of optional duct cover	12	30.5	12	30.5
H	Depth of hood	23	58.4	23	58.4
I	Width of duct opening	10	25.4	10	25.4

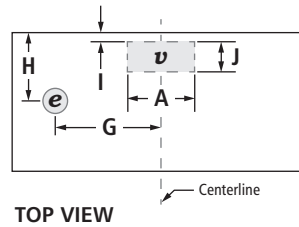
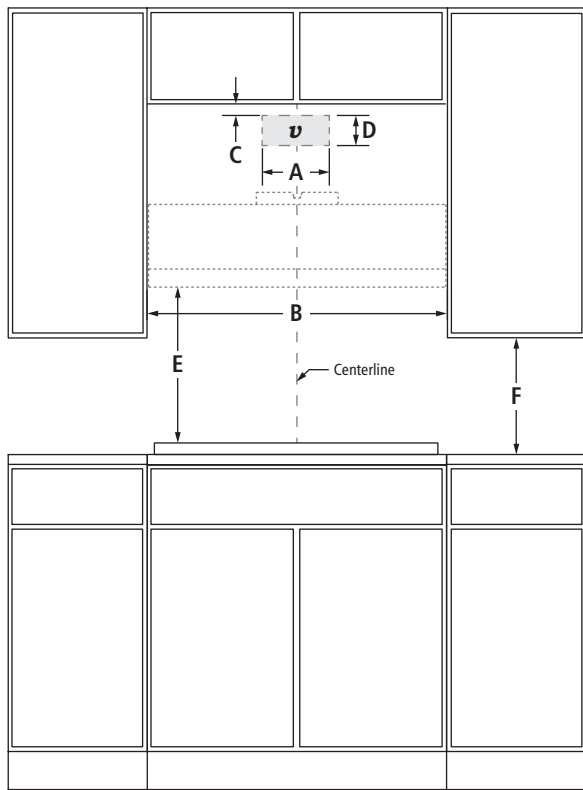
IMPORTANT: Dimensional specifications are provided for planning purposes only. Do not make any cutouts based on this information. Refer to the Installation Guide before selecting cabinetry, verifying electrical/gas connections, making cutouts or beginning installation. All Jenn-Air® appliances are appropriately UL, CUL or CSA approved.

36"/30" PRO-STYLE™ LOW PROFILE UNDER CABINET HOODS

JXU9136WP – 36" x 10½" x 23"

JXU9130WP – 30" x 10½" x 23"

OPENING/CLEARANCE DIMENSIONS



FRONT VIEW

ELECTRICAL REQUIREMENTS

120 volt, 60 Hz, AC only, 15-amp fused, electrical circuit is required.

VENTING REQUIREMENTS

The hood is factory set for venting through the roof or wall. Do not terminate the vent in an attic or other enclosed area.

MODEL #		JXU9136WP		JXU9130WP	
		in	cm	in	cm
A	Width of vent cutout	10½	26.7	10½	26.7
B	Width of cabinet opening (min.)	36	91.4	30	76.2
C	Height from vent cutout to upper cabinet – wall option	¾	1.0	¾	1.0
D	Height of vent cutout – wall option	3½	8.9	3½	8.9
E	Suggested distance from hood to cooking surface (min.-max.)	30-36	76.2-91.4	30-36	76.2-91.4
F	Height from upper cabinet to countertop (min.)	18	45.7	18	45.7
G	Distance from center of electrical access to center of hood	12¼	31.0	12¼	31.0
H	Distance from center of electrical access to wall	7⅞	20.0	7⅞	20.0
I	Depth from vent cutout to wall – ceiling option	¾	1.0	¾	1.0
J	Depth of vent cutout – ceiling option	3½	8.9	3½	8.9
e	Recommended electrical access location	1¼ dia.	3.2 dia.	1¼ dia.	3.2 dia.
v	Recommended vent location				

IMPORTANT: Dimensional specifications are provided for planning purposes only. Do not make any cutouts based on this information. Refer to the Installation Guide before selecting cabinetry, verifying electrical/gas connections, making cutouts or beginning installation. All Jenn-Air® appliances are appropriately UL, CUL or CSA approved.