

Steel FFB3450 Stainless Steel

Steel collection faucets blend the modern look and inherent sturdiness of solid stainless steel and are perfect for today's hard-working kitchens.

FEATURES

- Solid 304 stainless steel construction delivers corrosion resistance inside and out
- 360-degree swivel spout provides a full range of motion to reach almost any area of the sink
- Single handle effortlessly controls water temperature and pressure
- ADA Compliant
- Pair with other faucets in the Franke Steel series for a consistent look throughout the kitchen

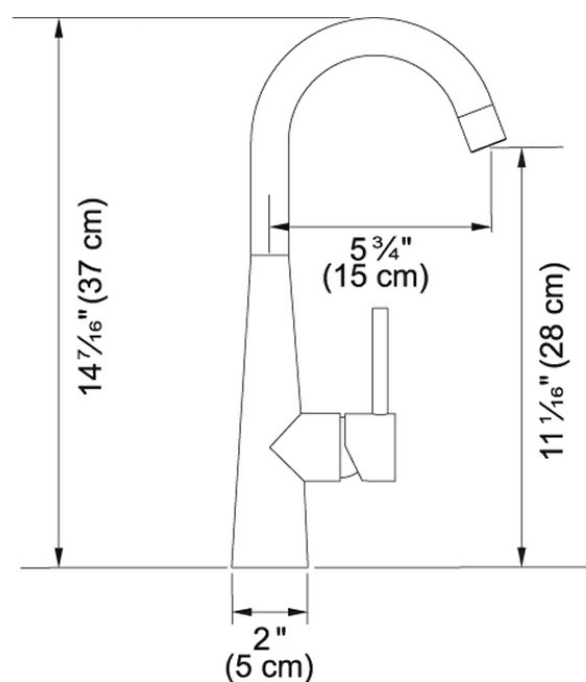
Product Picture



Product Information

| | |
|--------------------------|-------------------|
| Version | Arc Spout |
| Spray Type | Full Stream |
| Faucet Operation | Side Lever |
| Flow Rate | 1.75 gpm |
| Cartridge | Ceramic Cartridge |
| Where to buy | Showroom |
| Countertop hole diameter | 1 3/8" |

Technical Drawing



Article Numbers

| | |
|----------------|--------------|
| FUN# | 115.0355.505 |
| US Part Number | FFB3450 |

