

DW2450**FEATURES**

Please note: Due to industry-wide shortages, this product is experiencing limited availability and potential delays.

Adapts easily to differently shaped dishes and glasses with a height-adjustable middle rack and fold-down tines

Removes food and grease with three powerful spray arms and custom wash and dry options for different soil levels

Filters food efficiently through fine mesh for cleaner water throughout every cycle

Dries every type of dish, utensil, and pan thoroughly with a hot rinse and fan-assist

Operates in near silence that never interrupts

Matches classic Wolf and Sub-Zero stainless steel or accepts custom panels to integrate into any kitchen design

Opt for a stainless steel exterior panel for equal durability and a timeless, sophisticated look

Provides better visibility with interior LED lights

Maintains clean lines with sleek control panel and floor status light

Marvel at the durability of the stainless steel interior, built for decades of use

Monitor cycle progress, even start a new cycle, remotely. Receive alerts when rinse aid is low

ACCESSORIES

Pro Handle

Tubular Handle

24" Stainless Steel Door Panels

60cm Stainless Steel Door Panels

24" Stainless Steel Kickplates

60cm Stainless Steel Kickplates

Accessories are available through an authorized dealer.
For local dealer information, visit subzero-wolf.com/locator.

**HANDLE ACCESSORIES**

PRO



TUBULAR

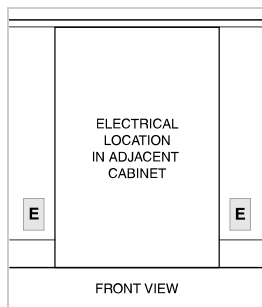
**PRODUCT DETAILS****DISHWASHER**

- 4 LED lights (2 sides; 2 top)
- 43 spray jets across three spray arms
- Four-stage, fine mesh filter
- Adjustable stemware rail
- Adjustable cup shelf
- Height-adjustable middle rack
- Easy-glide bottom rack
- Upper silverware rack
- One large utensil basket

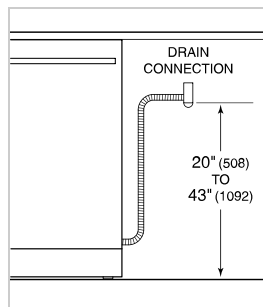
PRODUCT SPECIFICATIONS

Model	DW2450
Dimensions	23 5/8"W x 34 1/2"H x 23 1/4"D
Door Clearance	26 3/4"
Sound Level	41 dBA (Model and cycle/option dependent)
Electrical Supply	115 VAC, 60 Hz
Electrical Service	15 amp dedicated circuit
Receptacle	3-prong grounding-type
Cord Length	6'
Water Connection	5' braided tubing with 3/8" female compression fitting
Drain Connection	5' (1.5 m) corrugated tubing
Plumbing Pressure	30–140 psi

ELECTRICAL



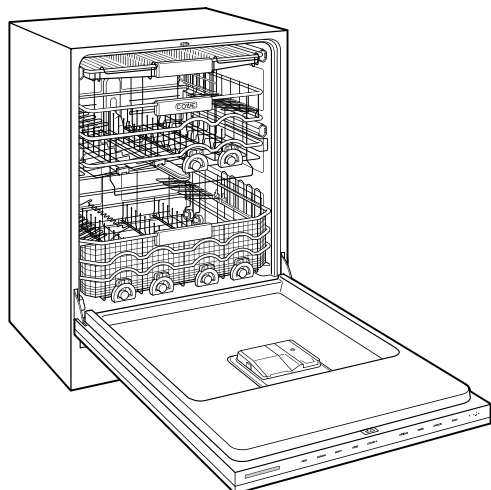
PLUMBING



COVE OPENING WIDTH Cove dishwashers accommodate varying opening widths. A 23 5/8" (60 cm) width provides minimum reveals and is ideal for new construction. A 24" width is also common; however, reveals for a 24" opening will be larger than the reveals for a 23 5/8" opening unless the panel width is adjusted accordingly. 24" and 60 cm stainless steel panels are available and must be specified accordingly.

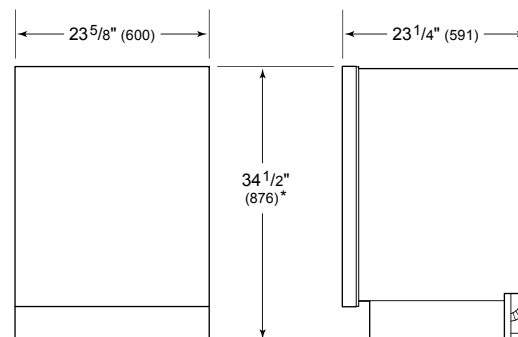
PANEL SPECIFICATIONS For complete panels specifications including width/height, weight requirements and thickness requirements visit subzero-wolf.com/reveal.

INTERIOR VIEW

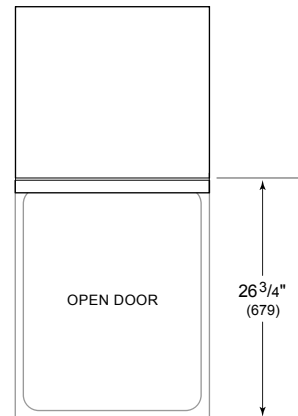


This illustration is intended for interior reference only and may not represent the exterior of the model being specified.

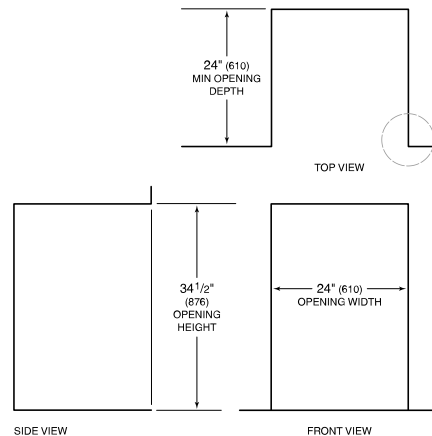
DIMENSIONS



*34" (864) MIN TO 34 5/8" (880) MAX



24" INSTALLATION



NOTE: 3 1/2" (89) finished returns will be visible and should be finished to match cabinetry.

