

FIRST USE

THE WATCH IS DELIVERED IN "ENERGY-SAVING" MODE

The watch arrives from the factory with the hands set to 12 o'clock and the crown is found extended to position ②, held in place by a small black cap around the winding stem which needs to be removed before proceeding.

Check with the retailer if this step has been undertaken. If it's not the case, proceed as follows:

- ① Remove the black cap to release the crown.
- ② Push the crown one click to position ①, the watch automatically changes to the Swiss time and date. It can then be set to the local time (refer to the section "setting the time manually").

IMPORTANT

If the crown is extended in position ② without rotation for more than 60 seconds, the watch will automatically switch to "energy-saving" mode with the hands consequently returning to 12 o'clock.



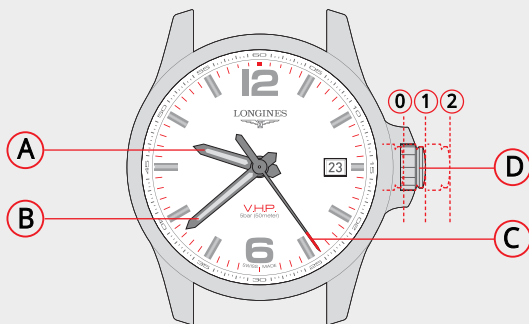
END OF LIFE (E.O.L.) AND END OF ENERGY (E.O.E.)

The watch indicates “End Of Life” mode (end of “battery life”) by moving the second hand forward in five second jumps.

After around six months in this mode, the watch will enter E.O.E. mode: the watch hands stop at the 12 o'clock position.

If the watch battery is changed in E.O.L. mode or within around six months of entering E.O.E. mode, there will be no need to adjust the perpetual calendar.

If this is not the case, when the watch battery is inserted, the perpetual calendar programming will be automatically displayed with a setting request.



GENERAL INFORMATION

A Hour hand

B Minute hand

C Second hand

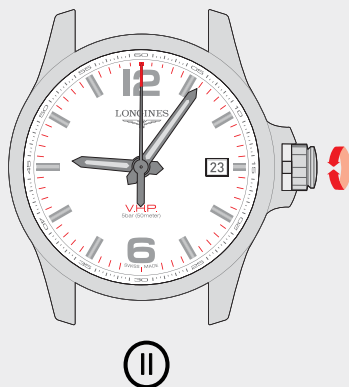
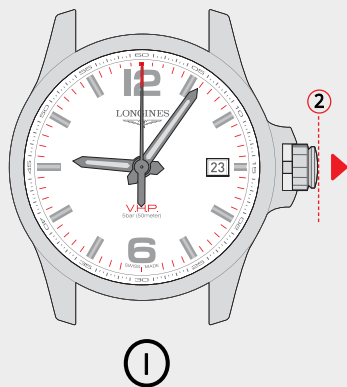
D Three crown positions

0 Push position (not functional on L288 and L289 calibres)

1 Standard position

2 Pull position

IMPORTANT: If the crown is extended in position **2** without rotation for more than 60 seconds, the watch will automatically switch to “energy-saving” mode with the hands consequently returning to 12 o’clock.



SETTING THE TIME

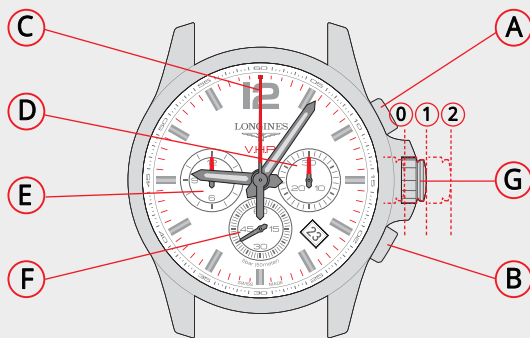
I Pull the crown into position **2**.

II Rotate the crown to set the time. 

A LONG SLOW ROTATION OF THE CROWN sets the time minute by minute; the second hand moves automatically to 12 o'clock.

A SHORT QUICK ROTATION OF THE CROWN sets the time hour by hour; the minute hand makes a cycle to move forwards or backwards one hour.

After setting the time, push the crown back into position **1**.



GENERAL INFORMATION

- A** Push-piece Start-Stop
- B** Push-piece Split and reset
- C** 60-second counter (chronograph)
- D** 30-minute counter (chronograph)
- E** 12-hour counter (chronograph)
- F** Small seconds (watch)
- G** Three crown positions
- 0** Push position (not functional on L288 and L289 calibres)
- 1** Standard position
- 2** Pull position

IMPORTANT: If the crown is extended in position **2** without rotation for more than 60 seconds, the watch will automatically switch to “energy-saving” mode with the hands consequently returning to 12 o’clock.



SETTING THE TIME

① Pull the crown into position ②.

② Rotate the crown to set the time. 

A LONG SLOW ROTATION OF THE CROWN sets the time minute by minute; the second hand moves automatically to 12 o'clock.

A SHORT QUICK ROTATION OF THE CROWN sets the time hour by hour; the minute hand makes a cycle to move forwards or backwards one hour.

After setting the time, push the crown back into position ①.



①



②

CHRONOGRAPH FUNCTION

① **START:** start the timing by pressing push-piece **A**.

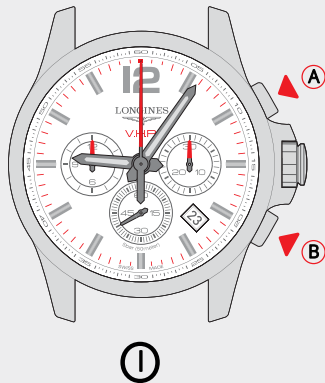
STOP: stop the timing by pressing push-piece **A** once again.

RESTART: continue the timing by pressing push-piece **A**. The start and stop function

can be alternately continued indefinitely by pressing push-piece **A**.

② **RESET TO ZERO:** once stopped, the timing can be reset to zero by pressing push-piece **B**.

After measuring a period of time of more than 36 hours, the movement considers it an oversight. In order to preserve the watch battery, the chronograph is automatically reset (returns to zero).



SPLIT-TIME FUNCTION

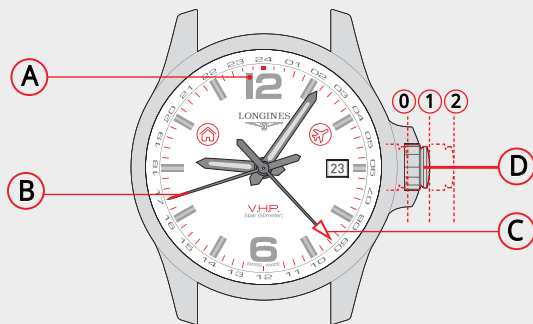
I **START:** start the timing by pressing push-piece **A**.

SPLIT: see the split time by pressing push-piece **B**.

RESTART: continue the timing by pressing push-piece **B**. The split and stop function can be alternately continued indefinitely by pressing push-piece **B**.

II **STOP:** press push-piece **A** to read the final recorded time.

RESET TO ZERO: the timing can be reset to zero by pressing push-piece **B**.



GENERAL INFORMATION



Home Time



Travel Time



Flash Setting photo-detector



Second hand



GMT/24H hand



Three crown positions



Push position

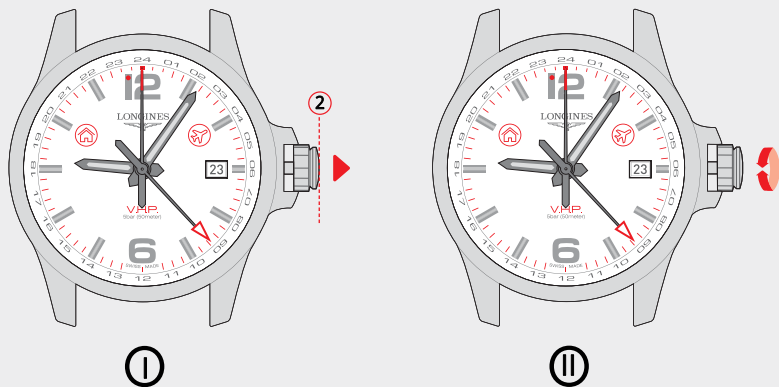


Standard position




Pull position

IMPORTANT: If the crown is extended in position ② without rotation for more than 60 seconds, the watch will automatically switch to “energy-saving” mode with the hands consequently returning to 12 o’clock.



SETTING THE TIME MANUALLY

Once the time mode is selected (Home Time or Travel Time), proceed as follows to set the time manually:

- ① Pull the crown into position ②.
- ② Rotate the crown to set the time. 

Note: Travel Time adjusts itself by increments of 15 minutes.

A LONG SLOW ROTATION OF THE CROWN sets the time minute by minute; the second hand moves automatically to 12 o'clock.

A SHORT QUICK ROTATION OF THE CROWN sets the time hour by hour; the minute hand makes a cycle to move forwards or backwards one hour.

After setting the time, push the crown back into position ①.



Home Time



Travel Time

SWITCH DISPLAY MODE (SWAP FUNCTION)

INDICATION OF DISPLAY MODE

Push the crown briefly to position ①, the second hand temporarily moves either to:



Home Time (located at ten o'clock)
or



Travel Time (located at two o'clock)

SWITCH DISPLAY MODE

Push the crown again briefly two times to position ① to switch between the two display modes.

After a three second delay the second-hand starts moving again in watch mode.



USING THE V.H.P. GMT FLASH SETTING APPLICATION

Download the V.H.P. GMT Flash Setting app, launch the tutorial and follow the instructions to set up Home Time and Travel Time.

www.longines.com/watches/flashsetting

You will be notified of app updates when they become available, directly to your smartphone.

LONGINES is delighted that you have chosen a model from our prestigious collection. The little technical marvel you now own will serve you faithfully for many years. The most advanced techniques were used during its manufacture, and it underwent stringent controls before it was released for sale.

Your LONGINES® watch is warranted by Longines Watch Co. Francillon Ltd* for a period of twenty-four (24) months from the date of purchase under the terms and conditions of this warranty.

The international LONGINES warranty covers material and manufacturing defects existing at the time of delivery of the purchased LONGINES watch (“defects”). The warranty only comes into force if the warranty certificate is dated, fully and correctly completed and stamped by an official LONGINES dealer (“valid warranty certificate”).

During the warranty period and by presenting the valid warranty certificate, you will have the

right to have any defect repaired free of charge. In the event that repairs are improper to restore the normal conditions of use of your LONGINES watch, Longines Watch Co. Francillon Ltd guarantees its replacement by a LONGINES watch of identical or similar characteristics. The warranty for the replacement watch ends twenty-four (24) months after the date of purchase of the replaced watch.

THIS MANUFACTURER'S WARRANTY DOES NOT COVER:

- the life of the battery;
- normal wear and tear and aging (e.g. scratched crystal; alteration of the colour and/or material of non metallic straps and chains, such as leather, textile, rubber; peeling of the plating);
- any damage on any part of the watch resulting from abnormal/abusive use, lack of care, negligence, accidents (knocks, dents, crushing, broken crystal, etc.), incorrect use of the watch and non-observance of the use directions provided by Longines Watch Co. Francillon Ltd;

- the LONGINES watch handled by non-authorized persons (e.g. for battery replacement, services or repairs) or which has been altered in its original condition beyond Longines Watch Co. Francillon Ltd's control.

ALL APPLICABLE IMPLIED WARRANTIES, INCLUDING THE IMPLIED WARRANTY OF MERCHANTABILITY AND OF FITNESS FOR A PARTICULAR PURPOSE GIVEN TO YOU BY LAW ARE HEREBY LIMITED IN DURATION TO THE DURATION OF THIS WARRANTY. UNDER NO CIRCUMSTANCES WILL LONGINES WATCH CO. FRANCILLON LTD BE LIABLE FOR ANY INDIRECT OR CONSEQUENTIAL DAMAGES OF ANY KIND.

Some states do not allow limitations on how long implied warranties last, or exclusions or limitations of incidental or consequential damages, so exclusions or limitations mentioned may not apply to you. This warranty gives you specific legal rights and you may also have other rights which may vary from state to state.

LONGINES WATCH CO. FRANCILLON LTD'S OBLIGATION IS STRICTLY LIMITED TO REPAIR OR REPLACEMENT AS EXPRESSLY STATED IN THIS LIMITED WARRANTY. YOUR OFFICIAL LONGINES DEALER CARRIES SOLE RESPONSIBILITY FOR ANY OTHER GUARANTEES.

The Longines Watch Co. Francillon Ltd's customer service ensures the perfect working order of your LONGINES watch. If your watch needs maintenance, rely on an official LONGINES dealer or an authorized LONGINES Service Center. They can guarantee service according to Longines Watch Co. Francillon Ltd's standards.

* Longines Watch Co. Francillon Ltd,
CH-2610 Saint-Imier, Switzerland.
©2002 Longines Watch Co. Francillon Ltd.
All rights reserved

NOTE: If you purchased your LONGINES® watch in Australia or New Zealand, the International LONGINES® Warranty contained in the booklet provided with this watch and on the LONGINES® website (www.longines.com) does NOT apply to you, and is replaced by this Australian / New Zealand Warranty (referred to below as the “Warranty”).

IMPORTANT NOTICE REGARDING YOUR CONSUMER RIGHTS

The benefits given to you under this Warranty are additional to, and do not detract from, other rights and remedies that you may have in relation to your LONGINES® watch and its purchase under Australian or New Zealand laws, including consumer protection laws.

In Australia, LONGINES® watches come with guarantees that cannot be excluded under the Australian Consumer Law. You are entitled to a replacement or refund for a major failure and compensation for any other reasonably foreseeable loss or damage. You are also entitled to have your LONGINES® watch repaired or replaced if it fails to be of acceptable quality and the failure does not amount to a major failure.

In New Zealand, LONGINES® watches also come with guarantees that cannot be excluded under the New Zealand Consumer Guarantees Act.

This Warranty:

- Is not intended to change or exclude any statutory or consumer rights that cannot be lawfully changed or excluded;
- Is independent of any warranty that may be provided by the seller, for which he carries sole responsibility; and
- Does not affect your rights against the seller, including any mandatory statutory rights you may have against the seller under local consumer laws.

OUR WARRANTY TO YOU

This Warranty is provided by LONGINES WATCH CO. FRANCILLON LTD, CH-2610 Saint Imier, Switzerland.

Telephone +41 329 42 52 66.

Your LONGINES® watch is covered by this Warranty for a period of twenty-four (24) months from the date of purchase under the terms and conditions of this Warranty.

This Warranty covers material and manufacturing defects existing at the time of delivery of the purchased LONGINES® watch (“defects”). Where such defects become apparent during the warranty period and provided you present a valid warranty certificate, LONGINES WATCH CO. FRANCILLON LTD will:

- Repair your watch free of charge; or
- In the event that repairs are unable to restore the normal conditions of use of your LONGINES® watch, replace your watch with a LONGINES® watch of identical or similar characteristics. Such replacement watch will have the benefit of this Warranty for the remainder of the Warranty Period applicable to the original (replaced) watch.

PLEASE BE AWARE THAT:

- Goods presented for repair may be replaced by refurbished goods of the same type rather than being repaired. Refurbished parts may be used to repair the goods;
- Any data you store in your watch may be lost in the course of a repair. It is your responsibility to back up any data that may be stored in your watch before presenting it for warranty service; and
- The Warranty is only valid if the warranty certificate enclosed with your LONGINES® watch upon purchase is dated, fully and correctly completed and stamped by an official LONGINES® retailer.

EXCLUSIONS AND LIMITATIONS

This Warranty does not cover:

- The lifetime of the battery;
- Normal wear and tear and aging (e.g. scratched crystal; alteration of the colour and/or material of non-metallic straps and chains, such as leather, textile, rubber; peeling of the plating);
- Any damage on any part of the watch resulting from abnormal/abusive use, lack of care, negligence, accidents (knocks, dents, crushing, broken crystal, etc.), incorrect use of the watch and non-observance of the use directions provided by LONGINES WATCH CO. FRANCILLON LTD;
- Indirect or consequential damages of any kind resulting from e.g. the use, the non-functioning, the defects or the inaccuracy of the LONGINES® watch; or
- Defects caused by the LONGINES® watch being handled by non-authorized persons (e.g. for battery replacement, services or repairs) or altered

in its original condition beyond LONGINES WATCH CO. FRANCILLON LTD's control.

HOW TO MAKE A CLAIM UNDER THIS WARRANTY

To make a claim under this Warranty, we recommend that you wrap your LONGINES® watch carefully so as to avoid any damage and send it with valid warranty by registered mail or drop it off in person to your nearest official LONGINES® retailer or an authorised LONGINES® Service Centre. To find current contact information for your nearest official LONGINES® retailer or authorised LONGINES® Service Centre: please telephone +61 3 8844 3300, email customer.service@swatchgroup.com.au or go to www.longines.com.

You will be responsible for paying the expenses associated with making a claim under this Warranty, including postal or delivery expenses and any relevant taxes.

OTHER CONDITIONS

No official LONGINES® retailer or Service Centre is authorised to make any modification, extension or addition to this Warranty. LONGINES WATCH CO. FRANCILLON LTD provides no warranty against defects beyond the rights and remedies given under this Warranty and which are available under the Australian Consumer Law and the New Zealand Consumer Guarantees Act 1993.

LONGINES® is a registered trademark of LONGINES WATCH CO. FRANCILLON LTD.

LONGINES is delighted that you have chosen a model from our prestigious collection. The little technical marvel you now own will serve you faithfully for many years. The most advanced techniques were used during its manufacture, and it underwent stringent controls before it was released for sale.

Your LONGINES® watch is warranted by Longines Watch Co. Francillon Ltd* for a period of twenty-four (24) months from the date of purchase under the terms and conditions of this warranty.

The international LONGINES warranty covers material and manufacturing defects existing at the time of delivery of the purchased LONGINES watch (“defects”). The warranty only comes into force if the warranty certificate is dated, fully and correctly completed and stamped by an official LONGINES dealer (“valid warranty certificate”).

During the warranty period and by presenting the valid warranty certificate, you will have the right to have any defect repaired free of charge. In the event that repairs are improper to restore the normal conditions of use of your LONGINES watch, Longines Watch Co. Francillon Ltd guarantees its replacement by a LONGINES watch of identical or similar characteristics. The warranty for the replacement watch ends twenty-four (24) months after the date of purchase of the replaced watch.

THIS MANUFACTURER'S WARRANTY DOES NOT COVER:

- the life of the battery;
- normal wear and tear and aging (e.g. scratched crystal; alteration of the colour and/or material of non metallic straps and chains, such as leather, textile, rubber; peeling of the plating);
- any damage on any part of the watch resulting from abnormal/abusive use, lack of

care, negligence, accidents (knocks, dents, crushing, broken crystal, etc.), incorrect use of the watch and non-observance of the use directions provided by Longines Watch Co. Francillon Ltd;

- indirect or consequential damages of any kind resulting from e.g. the use, the non-functioning, the defects or the inaccuracy of the LONGINES watch;
- the LONGINES watch handled by non-authorized persons (e.g. for battery replacement, services or repairs) or which has been altered in its original condition beyond Longines Watch Co. Francillon Ltd's control.

Any further claim against Longines Watch Co. Francillon Ltd e.g. for damages additional to the above described warranty is expressly excluded, except mandatory statutory rights the purchaser may have against the manufacturer.

THE ABOVE MANUFACTURER'S WARRANTY IS:

- independent of any warranty that may be provided by the seller, for which he carries sole responsibility;
- does not affect the purchaser's rights against the seller nor any other mandatory statutory rights the purchaser may have against the seller.

The Longines Watch Co. Francillon Ltd's customer service ensures the perfect working order of your LONGINES watch. If your watch needs maintenance, rely on an official LONGINES dealer or an authorized LONGINES Service Center. They can guarantee service according to Longines Watch Co. Francillon Ltd's standards.

* Longines Watch Co. Francillon Ltd,
CH-2610 Saint-Imier, Switzerland.
LONGINES® is a registered trademark.