

HIGH PERFORMANCE
FURNITURE FOR YOUR
HOME THEATER



Deploy™

Assembly Instructions

Deploy™ Home Theater Furniture

Your Deploy™ Home Theater Furniture is engineered for easy assembly. Carefully follow this procedure to prevent any damage.

Placement and Maintenance

Deploy™ Home Theater Furniture is designed for indoor use on level floors. Clean glass with glass cleaner, and steel parts and wood veneer with a moist cloth.

Designed by BDI Design Studio.

These distinctive product configurations are protected by US and international patents, trade dress, and/or copyright laws. "Deploy" and BDI are trademarks of Becker Designed Inc. All Rights reserved. ©2005, BDI



Assembled Frame x 1



Sliding Back Panel x 1



Center Shelf Support x 1



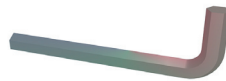
Top Glass Shelf x 1



Center Glass Shelf x 2



Rubber Bumper Insert x 15



Allen Wrench x 1



Shelf Pin x 4



Threaded Knob x 4



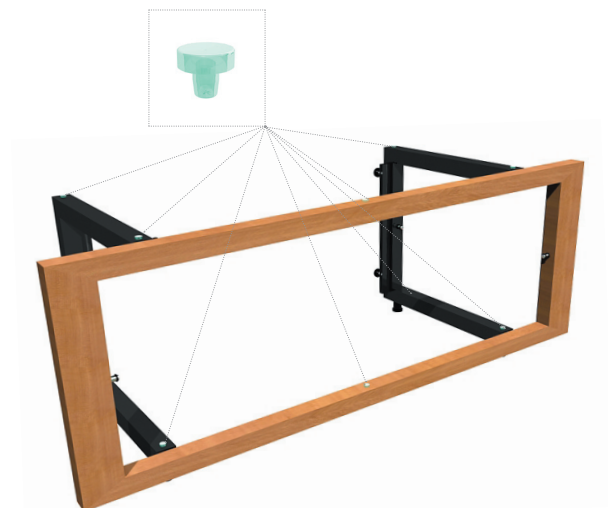
Velcro Strap/Wood Screws x 9

Step 1

Unpack and identify the parts listed above.

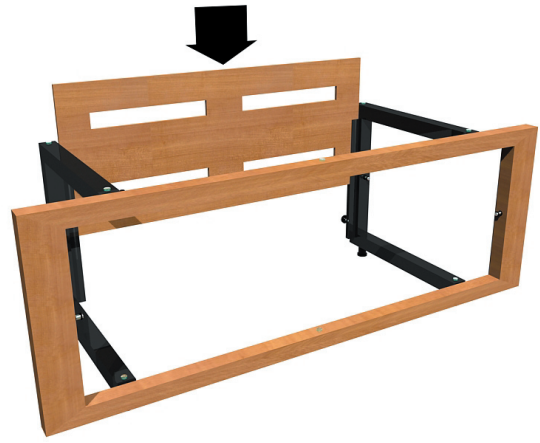
The assembly workspace should be a non-marring surface such as carpet. If any parts are missing or damaged contact: BDI Customer Service at customerservice@bdiusa.com

Unfold the metal legs on the **assembled frame**. Install the **shelf pins** into the desired location on the folding metal legs and the inside area of the wood frame using the **allen wrench**. Install the **rubber bumper inserts** to the assembled frame.



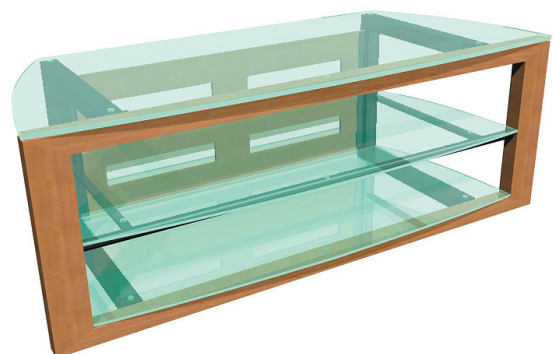
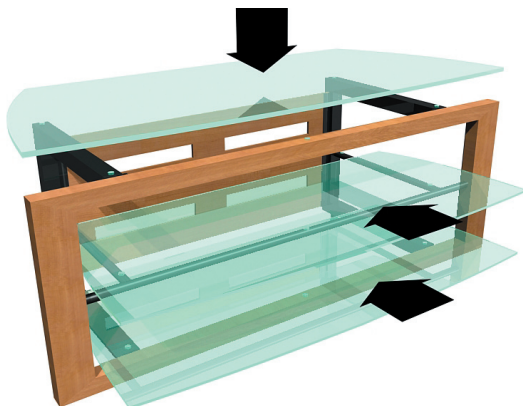
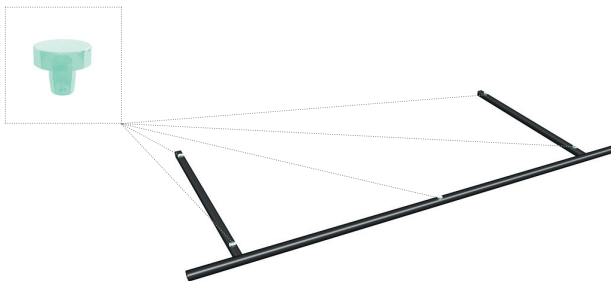
Step 2

Insert back panel. Once the metal legs are opened, slide the **back panel** down into the "U" channel, and tighten the four **threaded knobs** to secure back panel into position. Note* threaded knobs are included with the assembled frame.



Step 3





First, install the **rubber bumper inserts** to all of the hole locations on the center shelf support. Second, install the **center glass shelf support** by placing on the previously installed shelf pins. Third, install the **glass shelves**.





Step 4

Velcro straps and **small wood screws** are supplied, and can be used for organizing cable management. On the rear side of the back panel, are 9 pre-drilled holes for installing the Velcro straps using a **Phillips screw driver**.

	
<p>Double Wide TV Stand Model 9624 Cherry</p>	<p>Triple Wide TV Stand Model 9629 Cherry</p>
<p>19" H x 49" W x 19.5" D</p>	<p>19" H x 61" W x 19.5" D</p>
<p>For flat panel TVs up to 50", or rear projection TVs up to 45".</p>	<p>For flat panel TVs up to 62", or rear projection TVs up to 62".</p>
	
<p>Double Wide TV Stand Model 9634 Espresso</p>	<p>Triple Wide TV Stand Model 9639 Espresso</p>
<p>19" H x 49" W x 18.5" D</p>	<p>19" H x 61" W x 18.5" D</p>
<p>For flat panel TVs up to 50", or rear projection TVs up to 45".</p>	<p>For flat panel TVs up to 62", or rear projection TVs up to 62".</p>