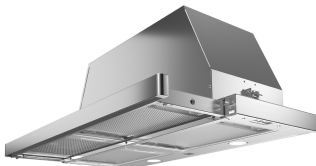


KTV30XV

30" TELESCOPIC EXTENSION VISOR HOOD



Complete your Bertazzoni kitchen with this practical visor hood.

Choose among 3 extraction airflow speeds, reaching a maximum flow performance of 600 CFM (cubic feet per minute).

Easily control all hood functions including the telescopic extension feature with ease using the slider controls.

Enjoy powerful illumination of the cooking surface with the long lasting and bright LED lights which also don't create additional heat and are energy efficient.

Filter out odors and grease with the aluminum mesh filters which can be easily cleaned periodically in the dishwasher or by hand.

The hood comes standard for venting outside the kitchen but, can be easily modified for recirculation by installing the optional charcoal filter kit.

Designed with pride by Bertazzoni in Italy.

Industry leading 2 years parts and labor warranty.

PRODUCT FEATURES

| | |
|------------------|--------------------------------|
| Size | 30" |
| Hood type | Under cabinet telescopic visor |
| Hood finish | Stainless steel |
| Motor | 1 |
| Speed | 3 |
| Hood control | Slider |
| Lights | 2 LED |
| Filters type | Aluminum mesh |
| Extraction power | 600 CFM |
| Recirculation | Yes |
| Duct cover | Not applicable |
| Duct size | 6" diameter |

TECHNICAL SPECIFICATIONS

| | |
|---------------------------------|---|
| Electrical supply | 120 V 60 HZ - 341 W 2.8 Amp |
| Power connection | NEMA 5-15P with 59" power cord |
| Certification | UL |
| Warranty | 2 years parts & labor |
| Packaging dimensions and weight | W 32 5/12" H 16 9/16" D 16 15/16" 33.5 lbs |

OPTIONAL ACCESSORIES

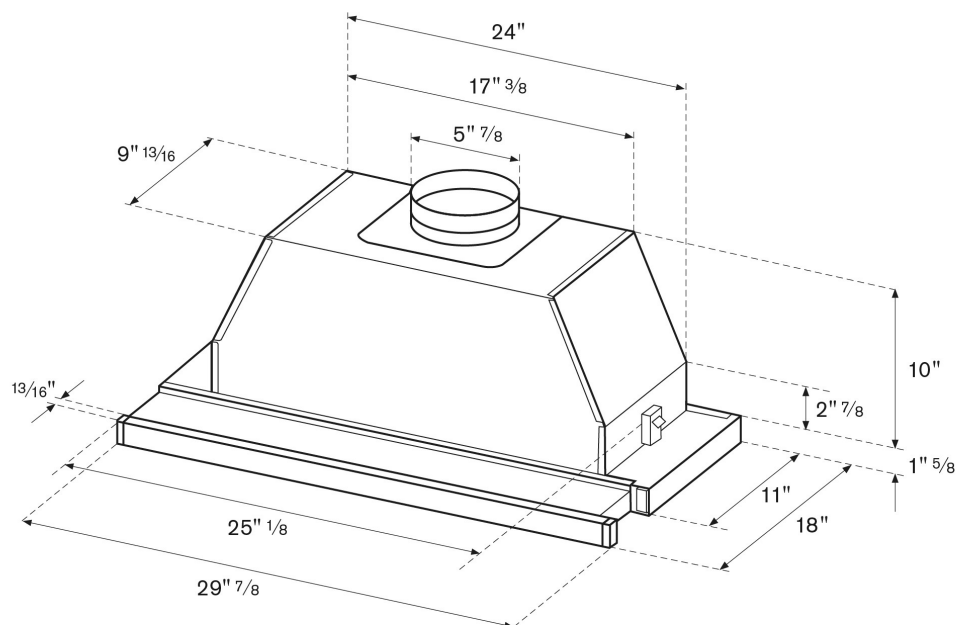
| | |
|--------|--------------------------|
| 901531 | Charcoal filters |
| 901532 | Durable charcoal filters |

KTV30XV

30" TELESCOPIC EXTENSION VISOR HOOD



PRODUCT DIMENSIONS



Hood Clearance

Recommended height above cooking surface:
min 24" for electric worktop
min 30" for gas worktop

CUT-OUT DIMENSIONS

