

IMPORTANT

If you are having difficulties with the installation of this product, please call our Tech Support line at 1-800-253-TECH. Before doing so, look over the instructions a second time, and make sure the installation was performed exactly as the instructions are stated. Please have the vehicle apart and ready to perform troubleshooting steps before calling.



KNOWLEDGE IS POWER

Enhance your installation and fabrication skills by enrolling in the most recognized and respected mobile electronics school in our industry. Log onto www.installerinstitute.com or call 800-354-6782 for more information and take steps toward a better tomorrow.



Metra recommends MECP certified technicians



iBEAMTM
VEHICLE SAFETY SYSTEMS

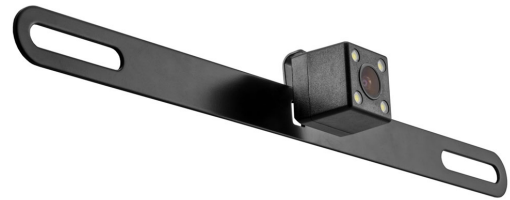
800.221.0932
iBeamUSA.com

460 Walker Street, Holly Hill, FL 32117



iBEAMTM
VEHICLE SAFETY SYSTEMS

TE-BPLTC
Product Manual



IMPORTANT

If you are having difficulties with the installation of this product, please call our Tech Support line at 1-800-253-TECH. Before doing so, look over the instructions a second time, and make sure the installation was performed exactly as the instructions are stated. Please have the vehicle apart and ready to perform troubleshooting steps before calling.



KNOWLEDGE IS POWER

Enhance your installation and fabrication skills by enrolling in the most recognized and respected mobile electronics school in our industry. Log onto www.installerinstitute.com or call 800-354-6782 for more information and take steps toward a better tomorrow.



Metra recommends MECP certified technicians



iBEAMTM
VEHICLE SAFETY SYSTEMS

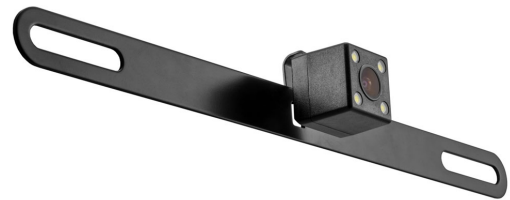
800.221.0932
iBeamUSA.com

460 Walker Street, Holly Hill, FL 32117



iBEAMTM
VEHICLE SAFETY SYSTEMS

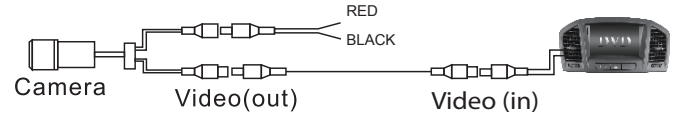
TE-BPLTC
Product Manual



I. Specifications

Sensor	1/3" CMOS FPX8341
Effective Pixel	720 (H) X480 (V)
Video Signal	PAL60HZ/ NTSC60HZ
Dynamic Guidance Trajectory	Embedded
Scanning system	2:1 interface
AGC	Auto
BLC	Auto
Resolution	600 TV lines
S/N Ratio	More Than 48dB
Current Consumption	No more 180mA
Power Supply	DC 9- 12V
Operating temperature	-20°C-70°C
Storage temperature	-30°C-80°C
View Angle	120°
Water-proof	IP67
Minimum Illumination	0.1Lux

II. Connection



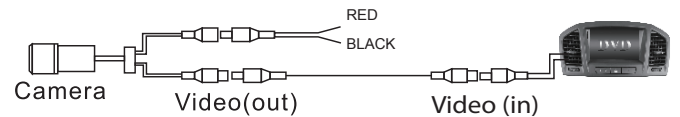
1. This is a behind license plate camera. Begin by removing the license plate bolts and the license plate, then install camera. Replace license plate and bolts.
2. Connect the RED wire to the +12 volt reverse wire
3. Connect the BLACK wire to ground (a metal, non-painted surface).
4. Run video cable though vehicle, up to video display. (Avoid placing video cable where it can get pinched or damaged).
5. Attach the YELLOW video rca to camera's output and to the reverse camera input of the radio or video display.

NOTE: The camera needs to angled down 30 - 40 degrees for proper functionality.

I. Specifications

Sensor	1/3" CMOS FPX8341
Effective Pixel	720 (H) X480 (V)
Video Signal	PAL60HZ/ NTSC60HZ
Dynamic Guidance Trajectory	Embedded
Scanning system	2:1 interface
AGC	Auto
BLC	Auto
Resolution	600 TV lines
S/N Ratio	More Than 48dB
Current Consumption	No more 180mA
Power Supply	DC 9- 12V
Operating temperature	-20°C-70°C
Storage temperature	-30°C-80°C
View Angle	120°
Water-proof	IP67
Minimum Illumination	0.1Lux

II. Connection



1. This is a behind license plate camera. Begin by removing the license plate bolts and the license plate, then install camera. Replace license plate and bolts.
2. Connect the RED wire to the +12 volt reverse wire
3. Connect the BLACK wire to ground (a metal, non-painted surface).
4. Run video cable though vehicle, up to video display. (Avoid placing video cable where it can get pinched or damaged).
5. Attach the YELLOW video rca to camera's output and to the reverse camera input of the radio or video display.

NOTE: The camera needs to angled down 30 - 40 degrees for proper functionality.