



To you, it's part of what makes cooking so enjoyable. Planning the menu. Selecting the ingredients. Savoring time spent in the kitchen. When you put so much of yourself into a meal, you want to be sure the results are perfect. With Jenn-Air® products, you can. Jenn-Air® products makes it easy to indulge your love of cooking, with cooktops designed to make everything you create well worth the wait.

For the ultimate in sleek good looks and innovative performance features, the Jenn-Air® Electronic Touch Control Cooktop is the perfect choice. If having the most precise and consistent temperature control available in an electric cooktop appeals to you, consider one of our cooktops that features a CustomControl dual element. And our Custom Choice™ dual or triple elements let you match a wider variety of pan sizes and shapes for more even heating. Jenn-Air® gas cooktops offer advantages that include ultra high output burners for quick heat-up and ultra low simmer burners for heating delicate sauces.

Of course, the Jenn-Air® brand is famous for its modular cooktops, which enable you to change your cooking method in seconds, by simply switching from a grill to a griddle to an element or burner. Downdraft ventilation provides the freedom to position your cooktop anywhere in the kitchen you like. And performance is complemented by the many style assets of our Pro-Style® products , Electric and Gas Expressions™ Collection and Designer Line downdraft cooktop selections.



THE PLEASURE  
*of* ANTICIPATION.

SHOWN: JEC0536ADS 36" ELECTRIC TOUCH CONTROL COOKTOP  
AND JXT8836ADS WALL MOUNT CHIMNEY HOOD

## PRO-STYLE® COOKTOPS

Jenn-Air® Pro-Style® cooktops bring commercial style and performance together to make gourmet cooking and gracious entertaining seem effortless. The Pro-Style® design brings the gleaming beauty of stainless steel to your gourmet kitchen. Details like oversized knobs and a drop-down control panel complete the commercial look. A downdraft model with four gas burners and E-ven Heat™ grill brings the ease and flavor of grilling to gas cooktop kitchens.

**Continuous porcelain-on-cast iron grates** make it easy to move pots and pans from one burner to another, and the one-piece design supports cookware of all sizes.



A VARIETY OF BURNER SIZES ON CONVENTIONAL MODELS RANGE FROM LARGE, HIGH OUTPUT 17,000 BTU BURNERS FOR QUICK HEAT-UP TO SMALL, LOW OUTPUT 5,000 BTU BURNERS THAT REDUCE TO 650 BTUs FOR DELICATE COOKING.



### 48" PRO-STYLE® GAS JGCP648ADP

- Six sealed burners with electronic ignition and Flame-Sensing™ reignition
- High output 17,000 BTU burners
- Low output 5,000 BTU burners reduce to extra-low 650 BTU rate
- Electric griddle with nonstick surface
- Convertible to LP
- Control panel extension for stock or custom cabinetry installation
- Available in stainless steel with black grates



### 48" PRO-STYLE® GAS DOWNDRAFT JGD8348CDP

- Downdraft ventilation with two-speed fan
- Comes with E-ven Heat™ grill assembly and 2 two-burner modules with sealed burners
- Electronic ignition
- Accepts optional two-burner module and gas grill accessories in left cooking bay
- Excalibur® nonstick grill grate finish
- Convertible to LP
- Control panel extension for stock or custom cabinetry installation
- Available in stainless steel with black grates

Excalibur® is a registered trademark of Whitford Corp.

See pages 110-113 for complete features and specifications.





**36" PRO-STYLE® GAS JGCP636ADP**

- Six sealed burners with electronic ignition and Flame-Sensing™ reignition
- High output 17,000 BTU burners
- Low output 5,000 BTU burners reduce to extra-low 650 BTU rate
- Convertible to LP
- Control panel extension for stock or custom cabinetry installation
- Available in stainless steel with black grates



**30" PRO-STYLE® GAS JGCP430ADP**

- Four sealed burners with electronic ignition and Flame-Sensing™ reignition
- High output 17,000 BTU burners
- Low output 5,000 BTU burner reduces to extra-low 650 BTU rate
- Convertible to LP
- Control panel extension for stock or custom cabinetry installation
- Available in stainless steel with black grates



**PRO-STYLE™ BACKSPASH**

- Stainless steel finish
- Adds to the commercial style of a Pro-Style® cooktop and protects the area behind the cooktop
- 12" height

**JXT9024AAP** for JGCP430ADP Cooktop

**JXT9027AAP** for JGCP636ADP Cooktop

**A509S** for JGCP648ADP & JGD8348CDP Cooktops

## ELECTRIC COOKTOPS

When it comes to meeting the needs of busy cooks, Jenn-Air® electric cooktops stand out, thanks to a wide variety of element sizes, cooking options and style choices.

**Electronic Glass-Touch Controls** with LED display provide a totally smooth cooktop surface. Controls are located at the center and include an "on" indicator light and hot surface indicator lights.

**9"/6" CustomControl dual element** utilizes an electronic sensor to constantly monitor and adjust heat output for the most precise and consistent temperature control available

in an electric cooktop. The Ultra High setting provides faster heat-up for boiling and achieves temperatures high enough for such gourmet cooking techniques as pan-searing, blackening and stir-frying. The Ultra Low setting is low enough to melt chocolate with ease, and is ideal for keeping delicate sauces warm without scorching.



### 36" ELECTRONIC TOUCH CONTROL JEC0536AD

- Electronic glass-touch controls
- 7" Cook & Warm element
- 12"/9"/6" Custom Choice™ triple element
- 9"/6" CustomControl dual element
- Warming Center™ element
- Glass ceramic surface
- Hot surface indicator lights
- Frameless design
- May be installed above Jenn-Air® 30" electric single wall ovens
- Available in black (shown), pearl white or black with stainless steel accents



### 30" ELECTRONIC TOUCH CONTROL JEC0530AD

- Electronic glass-touch controls
- 8" Cook & Warm element
- 9"/6" CustomControl dual element
- Warming Center™ element
- Glass ceramic surface
- Hot surface indicator lights
- Frameless design
- May be installed above Jenn-Air® 30" electric single wall oven
- Available in black, pearl white (shown) or black with stainless steel accents



ELECTRONIC TOUCH CONTROLS



CUSTOMCONTROL ELEMENT



COOK & WARM ELEMENT

THE 36" ELECTRONIC TOUCH CONTROL COOKTOP OFFERS A 12"/9"/6" CUSTOM CHOICE™ TRIPLE ELEMENT — THREE ELEMENT SIZES IN ONE AT THE CENTER POSITION FOR ULTIMATE PAN SIZE FLEXIBILITY AND COOKING CONVENIENCE. THE COOK AND WARM ELEMENT IS A FULLY-FUNCTIONING COOKING ELEMENT THAT REDUCES TO AN ULTRA-LOW 35 WATT SETTING FOR KEEPING FOOD WARM AFTER IT'S COOKED WITHOUT NEEDING TO MOVE THE PAN TO ANOTHER ELEMENT.



### 36" ELECTRIC RADIANT JEC9536AD

- 9"/6" CustomControl dual element ► 12"/9" Custom Choice™ dual element ► Warming Center™ element ► Glass-ceramic surface
- Hot surface indicator lights ► Brushed stainless finish control knobs ► Frameless design ► May be installed above Jenn-Air® 30" electric single wall ovens ► Available in black, pearl white or black with stainless steel accents (shown)



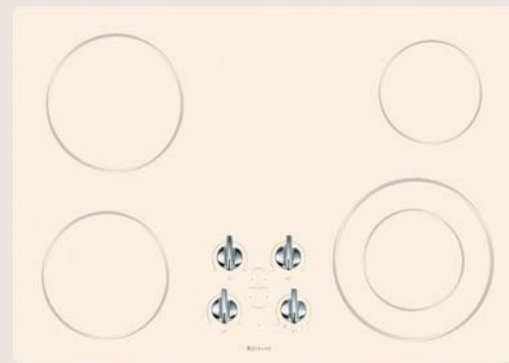
### 30" ELECTRIC RADIANT JEC9530AD

- 9"/6" CustomControl dual element ► Warming Center™ element ► Glass-ceramic surface ► Hot surface indicator lights
- Brushed stainless finish control knobs ► Frameless design
- May be installed above Jenn-Air® 30" electric single wall ovens
- Rated #1 by a leading consumer magazine ► Available in black (shown), pearl white or black with stainless steel accents



### 36" ELECTRIC RADIANT JEC8536AD

- 11"/6" Custom Choice™ Oval dual element ► 9"/6" Custom Choice™ dual element ► Glass-ceramic surface ► Hot surface indicator lights ► Brushed stainless finish control knobs ► Frameless design ► May be installed above Jenn-Air® 30" single electric wall ovens ► Available in black, pearl white, frost white (shown), natural bisque or black with stainless steel accents



### 30" ELECTRIC RADIANT JEC8430AD

- 9"/6" Custom Choice™ dual element ► Glass-ceramic surface ► Hot surface indicator lights ► Brushed stainless finish control knobs ► Frameless design ► May be installed above Jenn-Air® 30" electric single wall ovens ► Available in black, pearl white, frost white, natural bisque (shown) or black with stainless steel accents

## GAS COOKTOPS

Jenn-Air® gas cooktops bring incredible flexibility to your kitchen with a complete range of options designed to fit your cooking style. Choose our sophisticated porcelain enamel finish or the sleek look of our glass-ceramic surface, both in a variety of versatile colors and sizes. Or, obtain a commercial-style look with one of our gleaming stainless steel models. Performance advantages include:

**High output burners** feature 15,000 BTUs of power to quickly heat a large pot of pasta, or bring lobster to a rolling boil. Select models feature an ultra high output burner with up to 17,000 BTUs.

**Low output burners** reduce to 850 BTUs to maintain the low temperatures needed for heating delicate sauces. Select models feature an ultra low simmer burner that reduces to 650 BTUs.

**Electronic ignition with Flame-Sensing™ reignition** keeps the flame burning reliably on a Jenn-Air® cooktop. If the flame is accidentally blown out by a draft, it automatically re-ignites.

**Continuous burner grates** make it easy to move pots and pans from one burner to another, while the stylish curved design brings a distinctive look to your kitchen.

**Sealed burners** on the Jenn-Air® gas cooktops shown below are built directly into the glass-ceramic surface, eliminating hard to clean burner bowls. This smooth, seamless design provides a sophisticated look that's easy to keep looking its best. The removable burner caps aid in cleaning the burners when necessary.



**36" GAS JGC9536AD**

- Five sealed burners including one 17,000 BTU ultra high output burner and two ultra low 650 BTU burners
- Porcelain-on-cast iron continuous burner grates
- Brushed stainless finish control knobs
- Electronic ignition with Flame-Sensing™ reignition
- Convertible to LP
- May be installed above Jenn-Air® 30" electric single wall ovens
- Available in black glass-ceramic, frost white glass-ceramic with gray grates or black glass-ceramic with stainless steel accents (shown)



**30" GAS JGC9430AD**

- Four sealed burners including one 15,000 BTU ultra high output burner and one ultra low 650 BTU burner
- Porcelain-on-cast iron continuous burner grates
- Brushed stainless finish control knobs
- Electronic ignition with Flame-Sensing™ reignition
- Convertible to LP
- May be installed above Jenn-Air® 30" electric single wall ovens
- Available in black glass-ceramic (shown), frost white glass-ceramic with gray grates or black glass-ceramic with stainless steel accents





**45" GAS JGC8645BD**

- Six sealed burners including one 15,000 BTU ultra high output burner and two low output burners
- Porcelain-on-cast iron continuous burner grates
- Brushed stainless finish control knobs
- Electronic ignition with Flame-Sensing™ reignition
- Convertible to LP
- May be installed above Jenn-Air® 30" electric single wall ovens
- Available in stainless steel with black grates



*Cooking is at once one of the simplest and most gratifying of the arts,  
but to cook well one must have love and respect for food.*

CRAIG CLAIBORNE



**36" GAS JGC8536AD**

- Five sealed burners including one 15,000 BTU ultra high output burner and two ultra low 650 BTU burners
- Porcelain-on-cast iron continuous burner grates
- Brushed stainless finish control knobs
- Electronic ignition with Flame-Sensing™ reignition
- Convertible to LP
- May be installed above Jenn-Air® 30" electric single wall ovens
- Rated #1 by a leading consumer magazine
- Available in black porcelain enamel, white porcelain enamel with gray grates (shown), bisque porcelain enamel with taupe grates or stainless steel with black grates



**30" GAS JGC8430BD**

- Four sealed burners including one 15,000 BTU ultra high output burner and one ultra low 650 BTU burner
- Porcelain-on-cast iron continuous burner grates
- Brushed stainless finish control knobs
- Electronic ignition with Flame-Sensing™ reignition
- Convertible to LP
- May be installed above Jenn-Air® 30" electric single wall ovens
- Available in black porcelain enamel (shown), white porcelain enamel with gray grates, bisque porcelain enamel with taupe grates or stainless steel with black grates



## EXPRESSIONS™ COLLECTION DOWNDRAFT COOKTOPS

The award-winning, flush-to-the-counter design of Jenn-Air® Expressions™ Collection cooktops provides a sleek, sophisticated look for your kitchen. Performance features are just as sophisticated.

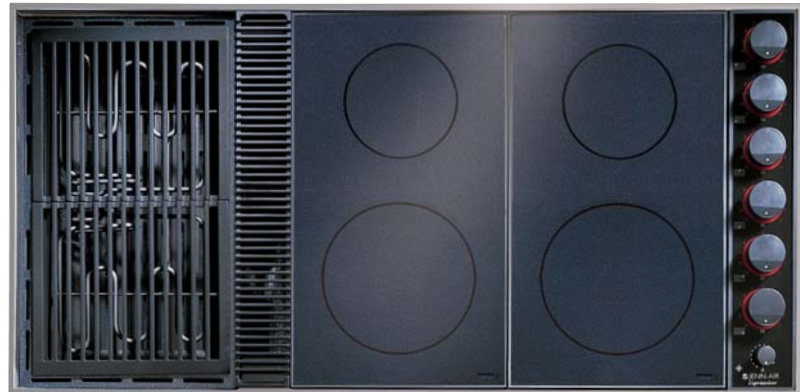
**Modular design** enables you to mix and match cartridges and accessories in an instant, allowing you to express your culinary creativity.

**PerimaVent™ downdraft ventilation system** on electric cooktops captures smoke, steam and odors and pulls them out through the edges of the basin pan and at the air grille, before they have a chance to escape into the kitchen. It's ideal for island or peninsula settings where cross-currents of air often interfere with efficient airflow in other systems. The PerimaVent™ design also keeps the basin pan cooler so drippings don't bake on. That makes clean-up easier.



**Energy Saver grill** provides independent temperature control of front and rear grill sections. Perfect for preparing small amounts of food on one half of the grill, or for preparing different foods simultaneously at different temperatures using both halves of the grill!

**Illuminated backlit controls** show at-a-glance that an element or burner is on.



### EXPRESSIONS™ COLLECTION MODULAR ELECTRIC DOWNDRAFT CVEX4370

(shown with optional AR141B radiant cartridges – see page 31)

- Modular design, comes with Energy Saver grill and two open bays ► Open bays accept radiant or coil element cartridges or grill assembly (grill in left and center bays only)
- Variable speed ventilation fan ► Illuminated backlit controls ► Accepts optional accessories
- Countertop or island/peninsula installation ► Available in black or white

(Not available in Canada)



### EXPRESSIONS™ COLLECTION GAS DOWNDRAFT CVGX2423

- Sealed burners with Flame-Sensing™ reignition
- Variable-speed ventilation fan ► Illuminated backlit controls
- Countertop or island/peninsula installation ► Electronic ignition ► Convertible to LP ► Accepts optional accessories
- Available in black, or white with gray grates



**EXPRESSIONS™ COLLECTION  
MODULAR ELECTRIC DOWNDRAFT CVEX4270**

- (shown with optional AR141W radiant cartridge – see page 31)
- Modular design, comes with Energy Saver grill assembly and an open bay ► Open bay accepts radiant or coil element cartridge or grill assembly ► Variable-speed ventilation fan ► Illuminated backlit controls ► Accepts optional accessories ► Countertop or island/peninsula installation ► Available in black or white



**EXPRESSIONS™ COLLECTION  
MODULAR ELECTRIC DOWNDRAFT  
CVEX4100**

- Modular design, comes with Energy Saver grill assembly
    - Accepts optional radiant or coil element cartridge
    - Variable-speed ventilation fan ► Illuminated backlit controls ► Accepts optional accessories ► Countertop or island/peninsula installation ► Available in black or white
- (Not available in Canada)



**EXPRESSIONS™ COLLECTION DUAL-FUEL DOWNDRAFT CVEX4100 + CVGX2423**

- Four burner gas cooktop combines with electric Energy Saver grill cooktop ► Electric cooktop may be placed on either side of gas cooktop and accepts optional radiant or coil element cartridge ► Variable speed ventilation fans
    - Illuminated backlit controls ► Both cooktops accept optional accessories ► Convertible to LP
    - Countertop or island/peninsula installation ► Available in black, or white with gray grates
- (Requires trim support bracket AO918) (Not available in Canada)

## DESIGNER LINE ELECTRIC DOWNDRAFT COOKTOPS

The trend in kitchens today is toward smart ideas that make gourmet cooking easier and more enjoyable. Jenn-Air® Designer Line cooktops are designed to meet that need with a wide variety of options.

**Downdraft ventilation**, developed and refined by Jenn-Air, captures smoke, steam and odors at the cooking surface, whisking them down and out for a fresher, cleaner kitchen. The Jenn-Air® downdraft design eliminates the need for an overhead hood – clearing the way for more open, innovative kitchen plans and making island and peninsula installations easy.

**Modular cooktop options** enable you to choose a triple-bay, double-bay or single bay configuration that can be customized to your cooking needs with interchangeable grill, cartridges and accessories in seconds. The grill assembly included with each Designer Line modular cooktop features grill grates with Excalibur® nonstick finish, and a removable, dishwasher-safe porcelain liner pan for easy clean-up.

**Electric radiant downdraft cooktop** offers the advantages of downdraft ventilation and four radiant elements on a frameless surface for a sleek design and superb performance.



### 30" DESIGNER LINE ELECTRIC RADIANT DOWNDRAFT JED8430AD

- Glass-ceramic surface ► Variable speed ventilation fan
- Three Quick-Start™ radiant elements ► One Custom Choice™ dual radiant element ► Hot surface light beside each element
- Backlit controls ► Accepts wok accessory ► Frameless design ► Countertop or island/peninsula installation ► Available in textured black, pearl white w/grey accents or textured bisque



*Cooking is like love.  
It should be entered  
into with abandon  
or not at all.*

HARRIET VAN HORNE



### 45" DESIGNER LINE MODULAR ELECTRIC DOWNDRAFT JED8345AD

(shown with optional JEA8000 grill assembly and JEA8120 radiant cartridge – see pages 30-31)

- Modular design, comes with grill assembly and two open bays ► Open bays accept radiant or coil element cartridge or grill assembly (grill in left and center bays only)
- Two-speed ventilation fan ► Three “On” indicator lights ► Accepts optional accessories ► Countertop or island/peninsula installation ► Available in black or white

See pages 106, 107 and 113 for complete features and specifications.

Excalibur® is a registered trademark of Whitford Corp.





**30" DESIGNER LINE MODULAR  
ELECTRIC DOWNDRAFT JED8230AD**

(shown with optional JEA8120 radiant cartridge – see page 31)

- Modular design, comes with grill assembly and an open bay
- Open bay accepts radiant or coil element cartridge or grill assembly
- Two-speed ventilation fan ➤ Two “On” indicator lights ➤ Accepts optional accessories ➤ Countertop or island/peninsula installation
- Available in black, white or stainless steel (shown)



**30" DESIGNER LINE MODULAR  
ELECTRIC DOWNDRAFT JED8130AD**

- Comes with grill assembly and two fixed coil elements ➤ Accepts optional radiant or coil element cartridge in place of grill ➤ Two-speed ventilation fan ➤ Two “On” indicator lights ➤ Accepts optional accessories ➤ Countertop or island/peninsula installation
- Available in black or white



**30" DESIGNER LINE LANAI™ OUTDOOR  
ELECTRIC DOWNDRAFT GRILL JED7430AA**

- Comes with two non-convertible grill assemblies with grill rocks ➤ UL approved for outdoor use only ➤ Must have overhead roof protection ➤ Available in black only
- (Not available in Canada)

**Lanai™ outdoor electric grill** is a stylish option for grilling at the poolhouse, guesthouse or covered patio area, and provides all the advantages of downdraft ventilation.



See pages 106, 107 and 113 for complete features and specifications.

## DESIGNER LINE GAS DOWNDRAFT COOKTOPS

Jenn-Air® Designer Line gas downdraft cooktops combine the heating control of a gas cooktop with the advantages of downdraft ventilation for grilling indoors – ideal for cooks who want the best of both worlds.

**E-ven Heat™ gas grill** brings the ease and flavor of grilling to gas cooktop kitchens with a patented design that ensures evenly grilled foods every time.

**Excalibur® nonstick grill grate finish** ensures that food won't stick to grill surface, making clean-up quick and easy.

**Split controls** are positioned at the front of the cooktop simulating the burner location for easy identification, while low profile knobs enhance the look of any decor.



### 45" DESIGNER LINE GAS DOWNDRAFT JGD8345AD

- Comes with E-ven Heat™ grill assembly and 2 two-burner modules with sealed burners
- Excalibur® nonstick grill grate finish ► Porcelain-on-cast iron burner grates ► Two-speed ventilation fan ► Accepts optional two-burner module in place of grill ► Grilling in left bay only
- Electronic ignition ► Convertible to LP ► Accepts optional accessories
- Available in black, or white with gray burner grates



### 30" DESIGNER LINE GAS DOWNDRAFT JGD8130AD

- Comes with E-ven Heat™ grill assembly and a two-burner module with sealed burners ► Excalibur® nonstick grill grate finish ► Porcelain-on-cast iron burner grates ► Two-speed ventilation fan ► Accepts optional two-burner module in place of grill ► Grilling in left bay only ► Electronic ignition ► Convertible to LP ► Accepts optional accessories ► Available in black, white with gray burner grates (shown) or stainless steel with black burner grates

**ELECTRIC DOWNDRAFT COOKTOP FEATURES AND SPECIFICATIONS**

MODEL #	SINGLE CVEX4100	DOUBLE CVEX4270	TRIPLE CVEX4370
Overall Width (in)	19 1/4	30 15/16	42 19/32
Overall Depth (in)	21 1/8	21 1/8	21 1/8
Cutout Width (in)	18 11/16 ± 1/16	30 7/16 ± 1/16	41 3/32 ± 1/16
Cutout Depth (in)	20 9/16 ± 1/16	20 9/16 ± 1/16	20 9/16 ± 1/16
Blower Assembly Clearance (below countertop) <sup>A</sup> (in)	17 1/2 min.	17 1/2 min.	17 1/2 min.
Total Connected Load <sup>B</sup> KW (see chart below)	4.35	8.45	12.80
Jenn-Air Platinum Warranty	•	•	•
Downdraft Ventilation <sup>C</sup>	•	•	•
Indoor Grilling	1 Bay	2 Bays	2 Bays
Energy Saver Grill Element with Savorizer™ Liner Pan <sup>D</sup>	•	•	•
Excalibur® Finish Grill Grates with Color Coordinated Grill Covers <sup>E</sup>	•	•	•
Accepts Optional Cartridges	•	•	•
Accepts Grill/Cooktop Accessories	•	•	•
Countertop Installation	•	•	•
Island/Peninsula Installation	•	•	•
Single Cooktop	•		
Double Cooktop		•	
Triple Cooktop			•
PerimaVent™ Downdraft Ventilation System	•	•	•
Variable-Speed Ventilation Fan	•	•	•
Backlit Controls	•	•	•
Color Indicators (add to end of model number) B=Black, W=White	B,W	B,W	B,W
Available in Canada		•	
Approximate Shipping Weight (lbs./kg)	55 / 25	69 / 31	84 / 38

- Feature included.
- A. Blower can be swiveled 90° and vented down through cabinet or out back wall.
- B. All models are UL listed for 3-wire 120/240 VAC.
- C. Can vent up to 60 equivalent feet.
- D. Energy Saver grill element has independent control of front and rear sections of grill (2800 watts).
- E. Excalibur® is a registered trademark of Whitford Corp. Color-coordinated grill covers are tempered glass.

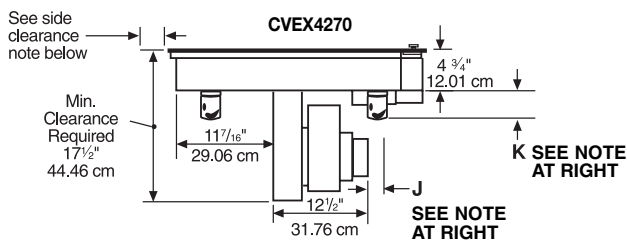
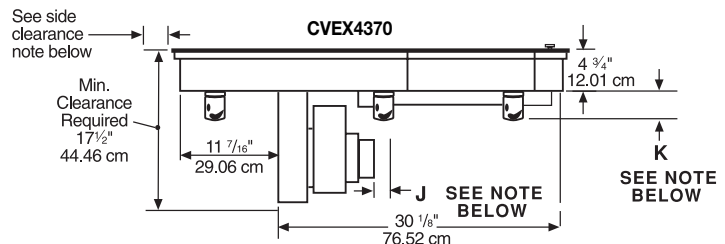
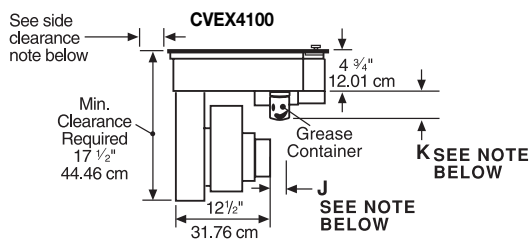
**NOTE:** Double gas cooktop, Model CVGX2423, may be combined with single electric grill cooktop, Model CVEX4100. Electric cooktop may be placed on either side of gas cooktop and accepts Expressions™ Collection electric cartridges and electric grill accessories. Trim Support Bracket, Model AO918, is required to combine the cooktops.

**All Jenn-Air® appliances are appropriately UL, AGA, CSA or CGA approved.**

**CIRCUIT PROTECTION SPECIFICATION GUIDE**

Recommended Minimum		
K.W. Rating On Serial Plate	Circuit Protection In Amperes	Wire Size AWG
0 – 4.8	20	12
4.9 – 6.9	30	10
7.0 – 9.9	40	8
10.0 – 11.9	50	8
12.0 – 14.9	60	6

**ELECTRIC DOWNDRAFT COOKTOP DIMENSION DIAGRAMS**



**NOTES**

Dimensions shown in both Inches and Centimeters.  
 Dimension "J" – Provide 2" minimum (5.08 cm) cabinet clearance to motor for cooling purpose.  
 Dimension "K" – Provide 6 1/4" min (15.88 cm) required for removal of (supplied) grease container(s).  
 Installed dimension for (supplied) grease container(s) is 5 1/4" (13.97 cm).

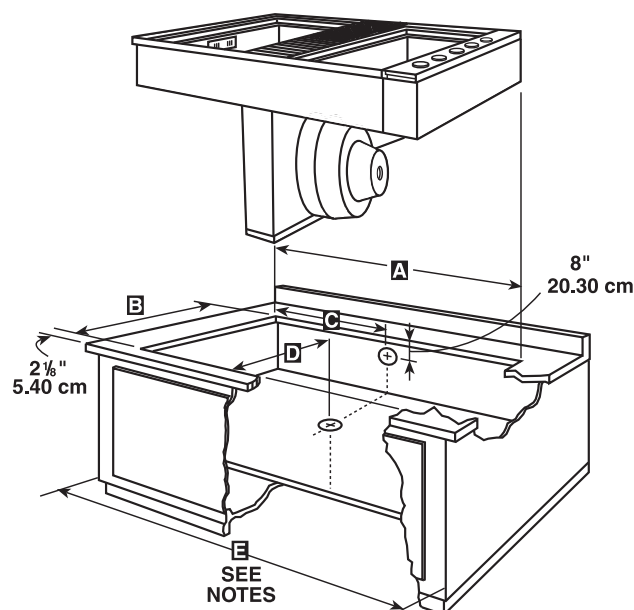
Side Clearance – Grills installed near a side wall must allow a minimum clearance of 6" (15.24 cm) between cooktop and side wall for maximum performance.

**IMPORTANT: Cutout Dimensions Are Critical. Refer to installation instructions packaged with product BEFORE making cutouts.**

**IMPORTANT:** Because of continuing product improvements, Jenn-Air reserves the right to change specifications without notice. Dimensional specifications are provided for planning purposes only. For complete details see installation instructions packed with product before selecting cabinetry, making cutouts or beginning installation.



ELECTRIC DOWNDRAFT COOKTOP DIMENSION DIAGRAMS



Consult Ducting Guide for Proper Instruction

	A CUTOUT WIDTH		B CUTOUT DEPTH		C DUCT PLACEMENT		D DUCT PLACEMENT		E MIN. CABINET WIDTH	
	in	cm	in	cm	in	cm	in	cm	in	cm
CVEX4100	18 1/16	47.48	20 3/16	52.23	6 3/16	16.03	14 1/16	36.67	21	53.34
CVEX4270	30 3/16	77.34	20 3/16	52.23	17 3/4	45.08	14 1/16	36.67	33	83.82
CVEX4370	41 3/32	160.60	20 3/16	52.23	17 3/4	45.08	14 1/16	36.67	45	114.30

**IMPORTANT**

Dimensions shown in both Inches and Centimeters.  
Dimension "A & B" – Tolerances  $\pm \frac{1}{16}$ " or  $\pm .16$  cm

**NOTE**

Where possible, 6" (15.24 cm) is recommended for motor blower service. Minimum clearance of 1" (2.54 cm) is required to sidewalls and 3/4" (1.905 cm) to rear wall. Electrical Hookup – The unit must be properly circuit protected and wired according to local electrical codes.

These appliances have been designed in accordance with the requirements of various safety agencies and comply with the maximum allowable wood cabinet temperatures of 194°F. If these appliances are installed with cabinets that have a lower working temperature than 194°F, discoloration, delamination or melting may occur.

**IMPORTANT: Cutout Dimensions Are Critical. Refer to installation instructions packaged with product BEFORE making cutouts.**

ACCESSORIES

DOWNDRAFT MODELS					
		ELECTRIC			GAS
	Model #	CVEX 4100	CVEX 4270	CVEX 4370	CVGX 2423
Wok	A0142	*	*	*	*
Big Pot Element <sup>A</sup> (2100W) <sup>B</sup>	A145A	*	*	*	
Big Pot Grate <sup>C</sup>	AG146				*
Griddle <sup>D</sup> (1300W) <sup>B</sup>	A0310	*	*	*	
Grill Covers <sup>E</sup>	A0345B/W		*	*	
Energy Saver Grill Assembly (2800W) <sup>B</sup>	A0330		*	*	
Excalibur® Finish Replacement Grill Grates <sup>F</sup>	AEX918	*	*	*	
Rotiss-Kebab	A0320	*	*	*	
<b>Cartridges (side plug-in; use in open bay(s) and/or in place of grill)</b>					
Conventional Coil (large element 2100W; small element 1250W)	AC110B/W	*	*	*	
Radiant Element (large element 2000W; small element 1200W)	AR141B/W	*	*	*	

\*Accepts optional cartridge/accessory.

- A. Raised element replaces large conventional coil element, for use with coil cartridge only.
- B. Plug-in accessories rated 240V.
- C. Elevates grate for large cooking pots.
- D. Integral heating element, side plug-in.
- E. All color-coordinated grill covers are tempered glass. One set of two included to cover grill (order to cover optional grill assembly (A0330) or Griddle (A0310) when not in use). May also be used as trivets.
- F. Excalibur® is a registered trademark of Whitford Corp.

**CIRCUIT PROTECTION SPECIFICATION GUIDE**

Recommended Minimum		
K.W. Rating	Circuit Protection	Wire Size
On Serial Plate	In Amperes	AWG
0 – 4.8	20	12
4.9 – 6.9	30	10
7.0 – 9.9	40	8
10.0 – 11.9	50	8
12.0 – 14.9	60	6

**IMPORTANT:** Because of continuing product improvements, Jenn-Air reserves the right to change specifications without notice. Dimensional specifications are provided for planning purposes only. For complete details see installation instructions packed with product before selecting cabinetry, making cutouts or beginning installation.

**GAS DOWNDRAFT COOKTOP  
FEATURES AND SPECIFICATIONS**

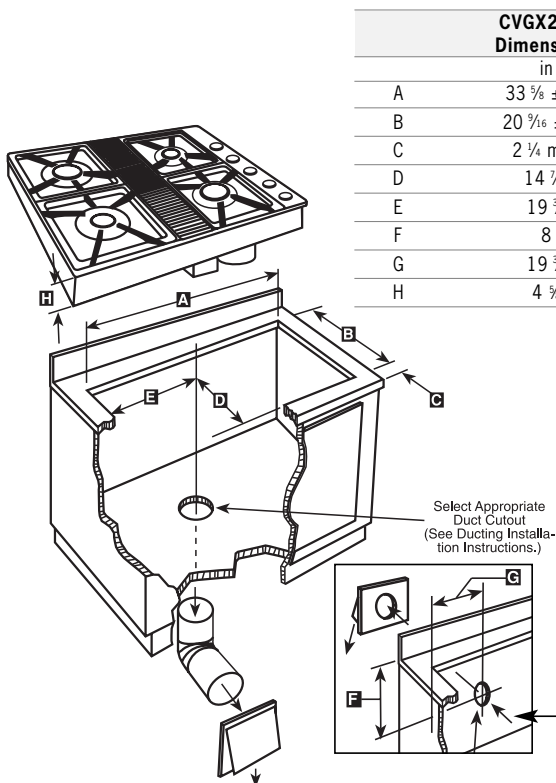
MODEL #	DOUBLE CVGX2423
Overall Width (in)	34 1/8
Overall Depth (in)	21 1/8
Cutout Width (in)	33 3/8 ± 1/16
Cutout Depth (in)	20 3/16 ± 1/16
Blower Assembly Clearance (below countertop) <sup>A</sup> (in)	17 1/2 min.
Burner Rates (BTUs) <sup>B,C</sup>	Natural/LP
Right Front Burner	12,000/8,000
Right Rear Burner	6,500/4,500
Left Front Burner	6,500/4,500
Left Rear Burner	10,500/8,000
Total Connected Load <sup>D</sup> -KW (see chart on page 98)	0.45
Jenn-Air Platinum Warranty	•
Downdraft Ventilation <sup>E</sup>	•
Accepts Grill/Cooktop Accessories	• <sup>F</sup>
Countertop Installation	•
Island/Peninsula Installation	•
Double Cooktop	•
Variable-Speed Ventilation Fan	•
Four Fixed Sealed Burners	•
Flame-Sensing™ Automatic Re-ignition	•
Electronic Pilotless Ignition	•
Convertible to LP Gas <sup>G</sup>	•
Backlit Controls	•
Color Indicators (add to end of model number)	
B=Black, W=White	B,W
Available in Canada	•
Approximate Shipping Weight (lbs./kg)	75 / 34

- Feature included.
- A. Blower can be swiveled 90° and vented down through cabinet or out back wall.
- B. Regulator connection 1/2" N.P.T. (male pipe).
- C. Burner simmer rates: right front, 1,600 BTUs; right rear, 800 BTUs; left front, 800 BTUs; left rear, 1,600 BTUs.
- D. Gas models are UL listed for 3-wire 120 VAC.
- E. Can vent up to 60 equivalent feet.
- F. Model CVGX2423 accepts only the optional Wok, Model AO142, and Big Pot Grate, Model AG146, cooktop accessories.
- G. Conversion kit shipped with product. It is recommended that a qualified servicer perform the conversion.

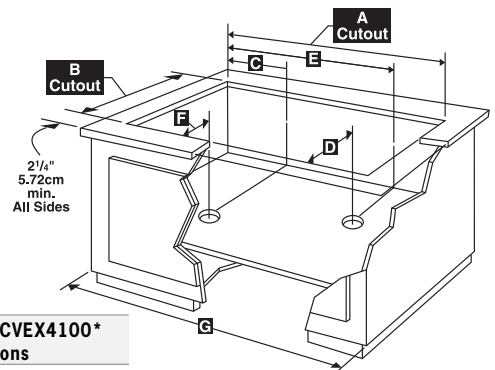
**NOTE:** Double gas cooktop, Model CVGX2423, may be combined with single electric grill cooktop, Model CVEX4100. Electric cooktop may be placed on either side of gas cooktop and accepts Expressions™ Collection electric cartridges and electric grill accessories. Trim Support Bracket, Model AO918, is required to combine the cooktops.

**All Jenn-Air® appliances are appropriately UL, AGA, CSA or CGA approved.**

**GAS DOWNDRAFT COOKTOP DIMENSION DIAGRAMS**



**Double Gas Cooktop With Single Electric Cooktop**



**IMPORTANT: Cutout Dimensions Are Critical. Refer to installation instructions packaged with product BEFORE making cutouts.**

\* This arrangement requires Trim Support Bracket AO918.

Dimensions shown above are for CVGX2423 and CVEX4100 combined. CVEX4100 single bay dimensions are shown on page 103 and 104. See chart on left for CVGX2423 dimensions.

**IMPORTANT:** Because of continuing product improvements, Jenn-Air reserves the right to change specifications without notice. Dimensional specifications are provided for planning purposes only. For complete details see installation instructions packed with product before selecting cabinetry, making cutouts or beginning installation.

## DESIGNER LINE ELECTRIC COOKTOPS

### ELECTRIC DOWNDRAFT COOKTOP FEATURES AND SPECIFICATIONS

LANAI™ GRILL					
MODEL #	JED 7430AA	JED 8130AD	JED 8230AD	JED 8430AD	JED 8345AD
	30"	30"	30"	30"	45"
Overall Width (in)	29 7/8	30	30	29 3/4	45
Overall Depth (in)	21 1/2	21 3/4	21 3/4	22	21 3/4
Cutout Width (in)	28 7/8	29	29	28 7/8	43 3/4
Cutout Depth (in)	20 15/16	21	21	21 1/8	21
Blower Assembly Clearance <sup>A</sup> (below countertop) (in)	15 7/8	13 15/16	13 15/16	17 1/2	13 15/16
Total Connected Load <sup>B</sup> -KW (see chart below)	6.0	8.0	8.0	7.0	12.1
Jenn-Air Platinum Warranty	•	•	•	•	•
Downdraft Ventilation <sup>C</sup>	•	•	•	•	•
Ventilation Fan	One Speed	Two Speed	Two Speed	Variable Speed	Two Speed
Indoor Grilling		•	•		•
Grill Assembly Included <sup>D</sup>	2	•	•		•
Grill Assembly Includes Removeable Porcelain Liner Pan		•	•		•
Excalibur® Nonstick Grill Grate Finish <sup>E</sup>	•	•	•		•
Accepts Grill Accessories <sup>F</sup>		•	•		•
Accepts Interchangeable Cartridges <sup>F</sup>		•	•		•
Accepts Wok Accessory <sup>G</sup>		•	•	•	•
Number of Bays Accept Grill <sup>H</sup>	2	1	2		2
Conventional Coil Elements Included <sup>I</sup>		2			
Quick-Start™ Radiant Elements Included <sup>J</sup>				3	
Custom Choice™ Dual Radiant Element Included <sup>K</sup>				1	
Glass-Ceramic Surface				•	
Backlit Controls				•	
Color Coordinated Control Knobs	•	•	•	•	•
"On" Indicator Lights	1	2	2		3
Hot Surface Indicator Lights				4	
Countertop Installation	•	•	•	•	•
Island/Peninsula Installation	•	•	•	•	•
UL Approved for Outdoor Installation Only w/Overhead Roof Protection	•				
Frameless Design				•	
Color Descriptions: B = Black porcelain, W = White porcelain, SB = Stainless steel, black accents, PWG = Pearl white glass (textured white surface on black glass), BT = Black textured glass, QT = Bisque textured glass	B	B,W	B,W,SB	BT,PWG,QT	B,W
Color Indicators (add to end of model number) B = Black, W = White, Q = Bisque, S = Stainless Steel	B	B,W	B,W,S	B,W,Q	B,W
Available in Canada		•	•	•	•
Approximate Shipping Weight (lbs./kg)	77/35	65/30	66/30	61/28	78/35

- Feature included.
- A. Blower can be swiveled 90°.
- B. All electric models are UL listed and rated for 3-wire 120/240 VAC, 60 Hz.
- C. Can vent up to 60 equivalent feet. (See page 158 for ducting data)
- D. Model JED7430 is a grill-only cooktop and is shipped with two 2800W grill assemblies and grill rocks. Model JED8130 is shipped with one 1900W grill assembly and includes two fixed conventional coil elements. Model JED8230 is shipped with one 1900W grill assembly and one open bay. Purchase of a cartridge is required. Model JED8345 is shipped with one 1900W grill assembly and two open bays. Purchase of two cartridges is required. Models JED8230 and JED8345 accepts grill in both bays. Model JED8345 does not accept grill in far right bay. Grill grates are coated with Excalibur® finish. Excalibur® is a registered trademark of Whitford Corp.
- E. Electric grill accessories are designed for use ONLY with electric cooktops. Gas grill accessories are designed for use ONLY with gas cooktops. These accessories are not interchangeable. Accessories for electric grill include a griddle and one-piece grill cover.
- F. Choose model JEA7000 conventional coil element or model JEA8120 radiant element.
- G. Model AO142 wok is designed for use with gas surface burners and electric conventional coil and radiant elements.
- H. Model JED8130 is shipped with a grill assembly and includes one 8" and one 6" fixed coil elements (elements may be removed for cleaning). Conventional element wattage: 8"-2100; 6"-1250. An optional coil or radiant element cartridge may be used in place of the grill.
- I. Model JED8430 element wattage: LR, 8" - 2200; RR/LF, 6" - 1200; RF (dual element) 8" - 2200, 5" - 700.

**All cartridges and accessories are optional. All Jenn-Air® appliances are appropriately UL, AGA, CSA or CGA approved.**

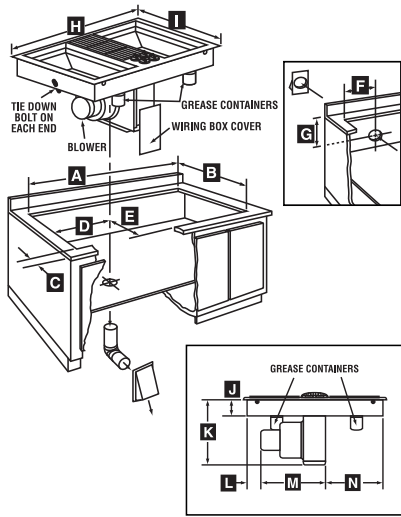
### CIRCUIT PROTECTION SPECIFICATION GUIDE

Recommended Minimum		
K.W. Rating On Serial Plate	Circuit Protection In Amperes	Wire Size AWG
0 – 4.8	20	12
4.9 – 6.9	30	10
7.0 – 9.9	40	8
10.0 – 11.9	50	8
12.0 – 14.9	60	6

**IMPORTANT:** Because of continuing product improvements, Jenn-Air reserves the right to change specifications without notice. Dimensional specifications are provided for planning purposes only. For complete details see installation instructions packed with product before selecting cabinetry, making cutouts or beginning installation.

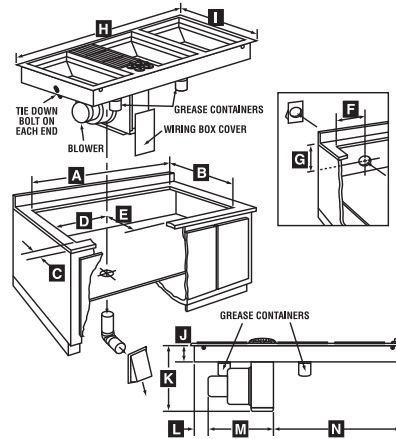


## 30/45" DOWNDRAFT COOKTOP DIMENSION DIAGRAMS

30" JED8130, JED8230  
DIMENSIONS

■	in	cm
A	29 ± 1/16	73.7 ± .2
B	21 ± 1/16	53.3 ± .2
C	1 7/8 min.	4.8
D	9 3/8 min. clear	23.8
E	7 7/16	19.2
F	9 3/8	23.8
G	13	33.0
H	30	76.2
I	21 3/4	55.2
J*	3 1/2 min.	8.9
K	13 13/16	35.1
L	2 min.	5.1
M	13 1/4	34.9
N	11 13/16	30.0

\* Measured from top of countertop,  
not top of unit.

45" JED8345  
DIMENSIONS

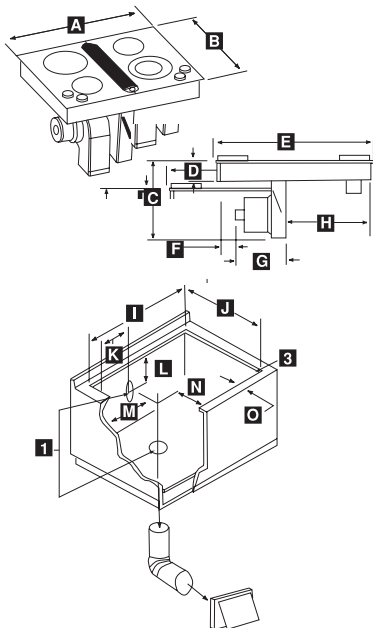
■	in	cm
A	43 1/4 ± 1/16	109.9 ± .2
B	21 ± 1/16	53.3 ± .2
C	1 7/8 min.	4.8
D	9 3/8	23.8
E	7 7/16	19.2
F	9 3/8	23.8
G	13	33.0
H	45	114.3
I	21 3/4	55.2
J*	3 1/2 min.	8.9
K	13 13/16	35.1
L	2 min.	5.1
M	13 1/4	34.9
N	26 3/4	68.0

\* Measured from top of countertop,  
not top of unit.

**IMPORTANT:** Cutout Dimensions  
Are Critical. Refer to installation  
instructions packaged with product  
BEFORE making cutouts.

**IMPORTANT NOTE:** When replacing a Jenn-Air® 48" cooktop (CVE4370 or CVG4380) with a Jenn-Air® 45" cooktop (JED8345 or JGD8345) using existing counter, a black or white trim ring to fill the countertop gap may be purchased by calling Micro-Trim at 714-241-7046 or 800-338-8746.

## 30" RADIANT DOWNDRAFT COOKTOP DIMENSION DIAGRAMS

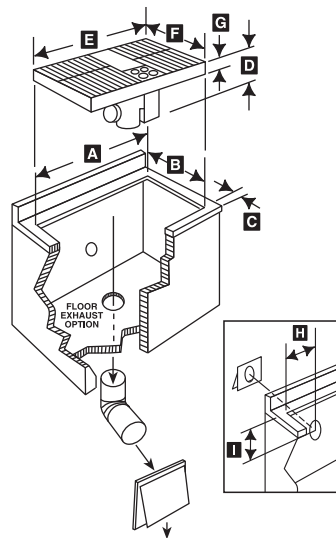
30" JED8430  
DIMENSIONS

■	in	cm
A	29 3/4	75.27
B	22	55.88
C	17 1/2 min. clear.	44.46 min. clear.
D	4 3/8	11.75
E	29 3/4	75.27
F*	2	5.08
G	12 1/2	31.75
H	12 1/2	31.75
I	28 7/8 ± 1/16	73.05 ± .16
J	21 1/8 ± 1/8	53.66 ± .32
K	10	25.40
L	16 1/2	41.75
M	10	25.40
N	6 3/8	16.13
O	2 min.	5.08 min.

## NOTES:

1. Select appropriate duct cutout. Blower may be rotated for horizontal or vertical direction by loosening nuts around the blower inlet (see ducting instructions).
2. Minimum cabinet to motor clearance for cooling purpose.
3. Slightly radius corners of cutout and file to ensure smooth edges and prevent corner cracking.

## 30" LANAI™ DOWNDRAFT COOKTOP DIMENSION DIAGRAMS

30" JED7430  
DIMENSIONS

■	in	cm
A	28 7/8 ± 1/16	73.34 ± .2
B	20 15/16 ± 1/16	53.18 ± .2
C	1 7/8 min.	4.76
D	15 1/8 min. clear	39.69
E	29 7/8	75.88
F	21 1/2	54.61
G*	3	7.62
H	9 3/8	23.72
I	13	33.02

\* Measured from top of countertop,  
not top of unit.

**IMPORTANT:** Cutout Dimensions  
Are Critical. Refer to installation  
instructions packaged with product  
BEFORE making cutouts.

**IMPORTANT:** Because of continuing product improvements, Jenn-Air reserves the right to change specifications without notice. Dimensional specifications are provided for planning purposes only. For complete details see installation instructions packed with product before selecting cabinetry, making cutouts or beginning installation.

## ELECTRIC COOKTOPS

ELECTRIC COOKTOP FEATURES AND SPECIFICATIONS						
MODEL #	JEC 8430AD	JEC 9530AD	JEC 0530AD	JEC 8536AD	JEC 9536AD	JEC 0536AD
	30"	30"	30"	36"	36"	36"
Overall Width (in)	29 15/16	29 15/16	29 15/16	35 1/6	35 1/6	35 1/6
Overall Depth (in)	21 1/2	21 1/2	21 1/2	21 1/2	21 1/2	21 1/2
Cutout Width (in)	29 1/6	29 1/6	29 1/6	34 1/6	34 1/6	34 1/6
Cutout Depth (in)	20 3/8	20 3/8	20 3/8	20 3/8	20 3/8	20 3/8
Total Connected Load <sup>A</sup> -KW (see chart below)	7.4	8.1	7.6	8.4	8.9	8.9
Jenn-Air Platinum Warranty	•	•	•	•	•	•
Accepts Wok Accessory <sup>B</sup>	•	•	•	•	•	•
Standard Quick-Start™ Radiant Elements Included <sup>C</sup>	3	3	2	3	2	1
Custom Choice™ Dual Radiant Element Included <sup>C</sup>	1			1	1	
Custom Choice™ Oval Dual Element Included <sup>C</sup>				1		
Custom Choice™ Triple Radiant Element Included <sup>C</sup>						1
CustomControl Dual Element Included <sup>C</sup>		1	1		1	1
Cook & Warm Element Included <sup>C</sup>			1			1
Warming Center™ Element Included <sup>C</sup>		1	1		1	1
Glass-Ceramic Surface	•	•	•	•	•	•
Electronic Glass Touch LED Controls			•			•
Brushed Stainless Finish Control Knobs	•	•		•	•	
"On" Indicator Lights	1	1	1	1	1	1
Hot Surface Indicator Lights	4	5	5	5	5	5
Accepts Optional Telescoping Downdraft Ventilation <sup>P</sup>	•	•	•	•	•	•
Countertop Installation	•	•	•	•	•	•
May Be Installed Above JJW8130/JJW8530/JJW9130/JJW9530						
Single Wall Oven <sup>F</sup>	•	•	•	•	•	•
Frameless Design	•	•	•	•	•	•
Color Descriptions: BT = Black textured glass, PWG = Pearl white glass (textured white surface on black glass), F = Frost white glass (true white), N = Natural bisque glass (true bisque), BS = Black glass, stainless steel accents	BT  PWG F N BS	BT  PWG BS	BT  PWG BS	BT  PWG F N BS	BT  PWG BS	BT  PWG BS
Color Indicators (add to end of model number) B = Black, W = White, F = Frost White N = Natural Bisque S = Stainless Steel	B, W F, N, S	B, W, S	B, W, S	B, W, F, N, S	B, W, S	B, W, S
Available in Canada	•	•	•	•	•	•
Approximate Shipping Weight (lbs./kg)	45/20	48/22	45/20	57/26	59/27	65/29

- Feature included.
- A. All electric models are UL, CL listed and rated for 3-wire 120/240 VAC, 60 Hz.
- B. Model A0142 wok is designed for use with gas surface burners and electric coil and radiant elements.
- C. Model **JEC8430** element wattage: LR, 8"-2000; LF, 7"-1800; RR, 6"-1200; RF (dual element) 9"-2400, 6"-1200. Model **JEC9530** element wattage: LR, 8"-2000; LF, 7"-1200; C (warming center) 6"-100; RR, 6"-1200; RF (CustomControl dual element) 9"-3000, 6"-1400. Model **JEC0530** element wattage: LR, (Cook & Warm element) 8"-2000, reduces to low 35; LF, 6"-1200; C (warming center) 6"-100; RR, 6"-1200; RF (CustomControl dual element) 9"-3000, 6"-1400, reduces to low 28. Model **JEC8536** element wattage: LR (dual oval element) 11"-1800, 6"-1200; LF, 6"-1200; C, 6"-1200; RR, 7"-1800; RF (dual element) 9"-2400, 6"-1200. Model **JEC9536** element wattage: LR, 7"-1800, LF, 6"-1200; C (dual element) 12"-2700, 9"-1700; RR (warming center) 6"-100; RF, (CustomControl dual element) 9"-3000, 6"-1400. Model **JEC0536** element wattage: LR, (Cook & Warm element) 7"-1800, reduces to low 35; LF, 6"-1200; C (triple element) 12"-2700, 9"-2200, 6"-1050; RR, (warming center) 6"-100; RF, (CustomControl element) 9"-3000, 6"-1400, reduces to low 28.
- D. 30" cooktop models accept HV303 optional telescoping downdraft ventilation and WC303 white cap or SC303 stainless steel cap. 36" cooktop models accept HV363 optional telescoping downdraft ventilation and WC363 white cap or SC363 stainless steel cap. (See page 155 for features and specifications).
- E. Cooktops cannot be installed above a wall oven in Canada.

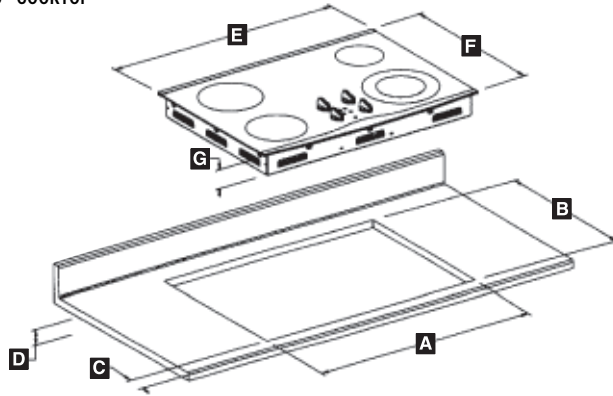
**All cartridges and accessories are optional.**  
**All Jenn-Air® appliances are appropriately UL, AGA, CSA or CGA approved.**

CIRCUIT PROTECTION SPECIFICATION GUIDE		
Recommended Minimum		
K.W. Rating On Serial Plate	Circuit Protection In Amperes	Wire Size AWG
0 – 4.8	20	12
4.9 – 6.9	30	10
7.0 – 9.9	40	8
10.0 – 11.9	50	8
12.0 – 14.9	60	6

**IMPORTANT:** Because of continuing product improvements, Jenn-Air reserves the right to change specifications without notice. Dimensional specifications are provided for planning purposes only. For complete details see installation instructions packed with product before selecting cabinetry, making cutouts or beginning installation.

## 30/36" COOKTOP DIMENSION DIAGRAMS

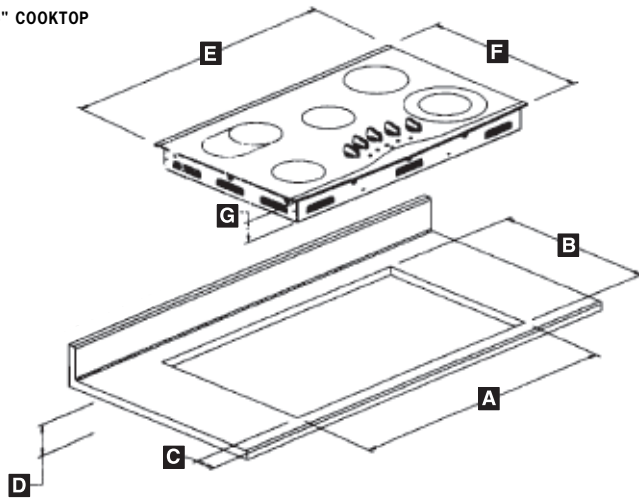
30" COOKTOP

30" JEC8430/JEC9530/JEC0530  
DIMENSIONS

■	in	cm
A	29 $\frac{1}{16}$ $\pm$ $\frac{1}{16}$	74.0 $\pm$ 0.2
B	20 $\frac{3}{8}$ $\pm$ $\frac{1}{16}$	51.9 $\pm$ 0.2
C	2 $\frac{1}{8}$ min.	5.4 min.
D	4 $\frac{1}{4}$ min. clear	10.8 min. clear
E	29 $\frac{1}{16}$	76.0
F	21 $\frac{1}{2}$	54.6
G	2 $\frac{3}{4}$	6.99

**NOTE:** "D" is clearance needed for unit depth. Measure down from top of countertop. Typical of all units.

36" COOKTOP

36" JEC8536/JEC9536/JEC0536  
DIMENSIONS

■	in	cm
A	34 $\frac{3}{16}$ $\pm$ $\frac{1}{16}$	87.9 $\pm$ 0.2
B	20 $\frac{3}{8}$ $\pm$ $\frac{1}{16}$	51.9 $\pm$ 0.2
C	2 $\frac{1}{8}$ min.	5.4 min.
D	4 $\frac{1}{4}$ min. clear	10.8 min. clear
E	35 $\frac{3}{16}$	89.7
F	21 $\frac{1}{2}$	54.6
G	2 $\frac{3}{4}$	6.99

**NOTE:** "D" is clearance needed for unit depth. Measure down from top of countertop. Typical of all units.

**IMPORTANT:** Cutout Dimensions Are Critical. Refer to installation instructions packaged with product BEFORE making cutouts.



## GAS AND PRO-STYLE® GAS COOKTOPS

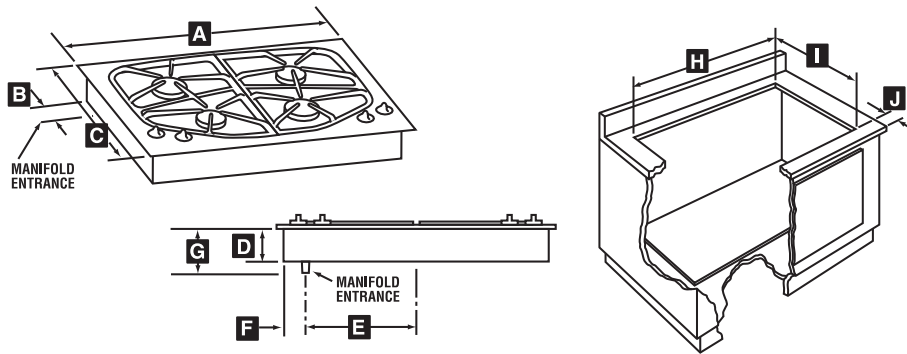
GAS COOKTOP MODEL FEATURES AND SPECIFICATIONS								
MODEL#	Pro-Style®			JGC 8430BD	JGC 9430AD	JGC 8536AD	JGC 9536AD	JGC 8645BD
	JGCP 430AD	JGCP 636AD	JGCP 648AD					
	30"	36"	48"	30"	30"	36"	36"	45"
Overall Width (in)	30	36 1/8	46 13/16	30	30	36	35 5/8	45
Overall Depth (in)	24 3/8	24 3/8	24 3/8	21 3/4	21 1/2	21 3/8	21 1/2	21 3/4
Cutout Width (in)	28 15/16	35 1/8	45 3/4	28 3/4	28 1/2	34 3/8	34 1/2	43 3/4
Cutout Depth (in)	23 1/8	23 1/8	23 1/8	20 3/8	19 15/16	20 13/16	19 15/16	20 3/8
Total Connected Load <sup>A</sup> - KW (see chart on page 112)	0.01	0.01	1.8	0.01	0.01	0.01	0.01	0.01
BTUs (natural/LP) <sup>B</sup>	RF17,000/15,000 RR9,200/9,100 LF17,000/15,000 LR5,000/4,000	RF17,000/15,000 RR9,200/9,100 LF17,000/15,000 LR5,000/4,000 CF9,200/9,100 CR5,000/4,000	RF17,000/15,000 RR9,200/9,100 LF17,000/15,000 LR5,000/4,000 CF9,200/9,100 CR5,000/4,000	RF15,000/14,000 RR9,200/9,100 LF5,000/4,000 LR10,500/9,100	RF15,000/14,000 RR9,200/9,100 LF5,000/4,000 LR10,500/9,100	RF12,500/10,500 RR5,000/4,000 LF5,000/4,000 LR9,200/9,000 CR15,000/14,000	RF12,500/9,100 RR5,000/4,000 LF9,200/9,100 LR5,000/4,000 CR17,000/15,000	RF15,000/8,500 RR9,100/5,500 LF9,100/5,500 LR10,500/8,500 CF6,500/5,000 CR6,500/5,000
Jenn-Air Platinum Warranty	•	•	•	•	•	•	•	•
Accepts Wok Accessory <sup>C</sup>	•	•	•	•	•	•	•	•
Gas Sealed Burners Included	4	6	6	4	4	5	5	6
Porcelain-On-Cast-Iron Burner Grates	•	•	•	•	•	•	•	•
Infinite Burner Control Settings	•	•	•	•	•	•	•	•
1300W Electric Griddle Included			•					
Electronic Pilotless Ignition	•	•	•	•	•	•	•	•
Flame-Sensing™ Electronic Re-ignition	•	•	•	•	•	•	•	•
Convertible to LP Gas <sup>D</sup>	•	•	•	•	•	•	•	•
Countertop Installation	•	•	•	•	•	•	•	•
May Be Installed Over JIW9530/ JJW9130/JJW8530/JJW8130 Wall Oven				•	•	•	•	•
Stylish Curved Burner Grate Design				•	•	•	•	•
Brushed Stainless Finish Control Knobs				•	•	•	•	•
Porcelain Enamel Surface				•		•		
Glass-Ceramic Surface					•		•	
Stainless Steel Surface	•	•	•	•	•	•	•	•
Pro-Style® Model								
With Professional Styling	•	•	•					
Drop-Down Extendible Control Panel	•	•	•					
Accepts Optional 12" Backsplash <sup>E</sup>	•	•	•					
Optional Pro-Style™ Hood Available <sup>F</sup>	•	•	•					
Color Descriptions: B = Black Porcelain <sup>G</sup> W = White Porcelain <sup>G</sup> BG = Black Glass <sup>G</sup> FG = Frost White Glass <sup>G</sup> (true white) Q = Bisque Porcelain <sup>G</sup> SB = Stainless Steel, Black Accents <sup>G</sup> BS = Black Glass, Stainless Steel Accents <sup>G</sup> P = Pro-Style® Stainless Steel <sup>G</sup>	P	P	P	B, W, Q, SB	BG, FG, BS	B, W, Q, SB	BG, FG, BS	SB
Color Indicators (add to end of model number) B = Black W = White F = Frost White Q = Bisque S = Stainless Steel P = Pro-Style® Stainless Steel	P	P	P	B,W,Q,S	B,F,S	B,W,Q,S	B,F,S	S
Available in Canada	•	•	•	•	•	•	•	•
Approximate Shipping Weight (lbs./kg)	48 / 22	62 / 28	76 / 34	48 / 22	64 / 29	72 / 31	72 / 31	67 / 30

- Feature included.
- A. Electric supply for pilotless ignition and electric griddle: 120 VAC, 60 HZ. Power cord supplied.
- B. Regular connection 1/2" N.P.T. (male pipe). Hi/Lo burner rates:  
**JGC8430:** 15,000/2,000, 10,500/1,450, 9,200/1,400, 5,000/650. **JGC9430:** 15,000/2,000, 10,500/1,300, 9,200/1,300, 5,000/650. **JGC8536:** 15,000/2,000, 12,500/1,300, 9,200/1,300, 5,000/650. **JGC9536:** 17,000/2,000, 12,500/1,300, 9,200/1,300, 5,000/650. **JGC8645:** 15,000/1,500, 10,500/1,500, 9,100/1,100, 6,500/850. The 5,000 BTU burner(s) on models JGCP430ADP, JGCP636ADP and JGCP648ADP cooktops reduce to low 650 BTU.
- C. Model A0142 wok is designed for use with gas surface burners, conventional coil and radiant elements.
- D. Jenn-Air® gas cooktops are factory-set for natural gas, but can be converted to LP. Conversion kit is shipped with cooktop. It is recommended that a qualified servicer perform the conversion.
- E. Order stainless steel backsplash A509S for cooktop JGCP648ADP. Order stainless steel backsplash model JXT9027AAP for cooktop JGCP636ADP. Order stainless steel backsplash model JXT9024AAP for cooktop JGCP430ADP.
- F. Order Pro-Style™ stainless steel hood model JXT9048CDP for cooktop JGCP648ADP. Order Pro-Style™ stainless steel hood model JXT9036CDP or JXT9136CDP for cooktop JGCP636ADP. Order Pro-Style™ stainless steel hood model JXT9030CDP or JXT9130CDP for cooktop JGCP430ADP. See page 156 for hood features and specifications.
- G. Black porcelain, stainless steel w/black accents, and Pro-Style® stainless steel cooktops have matte black burner grates. Black glass and black glass with stainless accents cooktops have gloss black burner grates. White porcelain and frost white glass cooktops have gloss gray burner grates. Bisque cooktops have gloss taupe burner grates.

**All cartridges/modules and accessories are optional. All Jenn-Air® appliances are appropriately UL, AGA, CSA or CGA approved.**

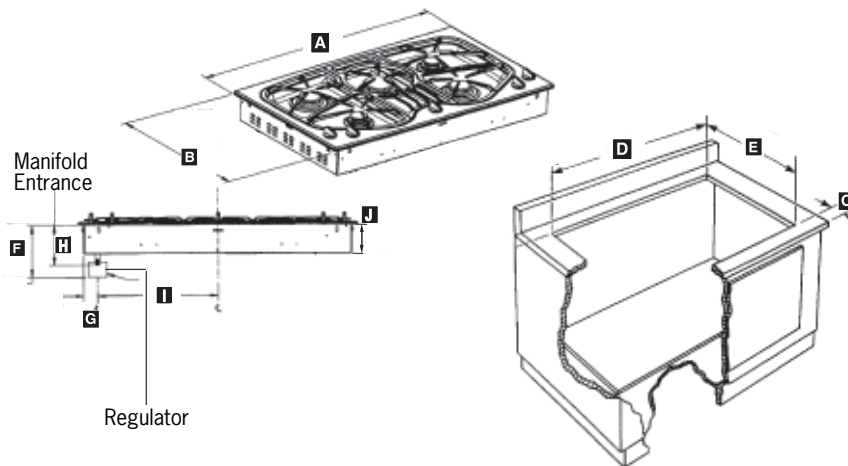
**IMPORTANT:** Because of continuing product improvements, Jenn-Air reserves the right to change specifications without notice. Dimensional specifications are provided for planning purposes only. For complete details see installation instructions packed with product before selecting cabinetry, making cutouts or beginning installation.

### 30" GAS COOKTOP DIMENSION DIAGRAMS



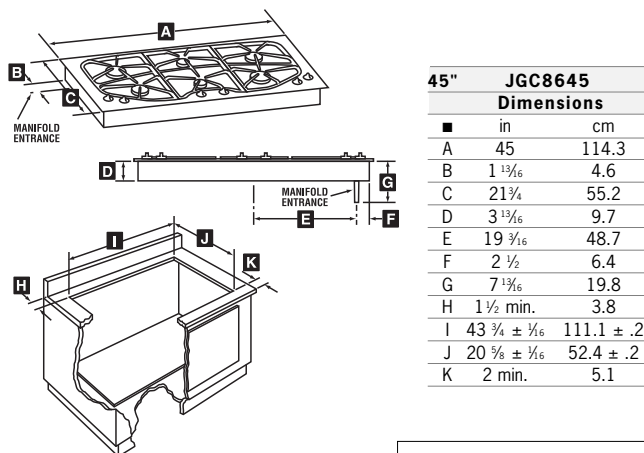
30"	JGC8430		JGC9430	
	DIMENSIONS		DIMENSIONS	
■	in	cm	in	cm
A	30	76.2	30	76.2
B	1 3/4	4.4	1 1/2	3.4
C	21 3/4	55.2	21 1/2	54.6
D	3 1/8	9.4	3 1/8	9.7
E	12 7/16	31.8	12 1/4	31.1
F	1 1/4	4.4	1 1/4	4.4
G	5 1/8	12.9	5 1/4	13.3
H	28 3/4 ± 1/16	73.0 ± .2	28 1/2	72.4
I	20 3/8 ± 1/16	52.4 ± .2	19 1/8	50.6
J	2 min.	5.1 min.	2 1/8	5.4

### 36" GAS COOKTOP DIMENSION DIAGRAMS



36"	JGC8536		JGC9536	
	DIMENSIONS		DIMENSIONS	
■	in	cm	in	cm
A	36	91.4	35 5/8	89.7
B	21 5/8	54.8	21	53.3
C	2	5.08	2 1/4	5.4
D	34 7/8	88.6	34 1/2	87.6
E	20 13/16	52.9	19 13/16	50.6
F	7 1/2	19.0	8 1/4	21.0
G	1 3/4	4.4	1 3/4	4.4
H	4 3/8	11.6	3 13/16	9.7
I	15 1/2	39.4	15 1/4	38.7
J	3 13/16	9.7	5 1/4	13.3

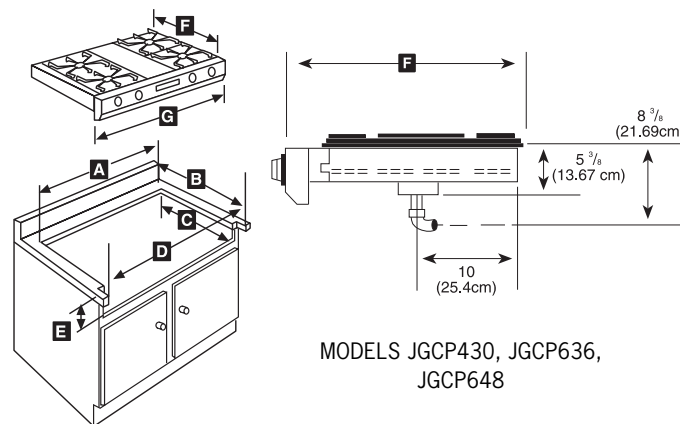
### 45" GAS COOKTOP DIMENSION DIAGRAMS



45"	JGC8645	
	Dimensions	
■	in	cm
A	45	114.3
B	1 13/16	4.6
C	21 3/4	55.2
D	3 13/16	9.7
E	19 7/16	48.7
F	2 1/2	6.4
G	7 13/16	19.8
H	1 1/2 min.	3.8
I	43 3/4 ± 1/16	111.1 ± .2
J	20 3/8 ± 1/16	52.4 ± .2
K	2 min.	5.1

**IMPORTANT:** Cutout Dimensions Are Critical. Refer to installation instructions packaged with product BEFORE making cutouts.

### PRO-STYLE® GAS COOKTOP DIMENSION DIAGRAMS



MODELS JGCP430, JGCP636, JGCP648

30"	JGCP430		36"	JGCP636		48"	JGCP648	
	Dimensions			Dimensions			Dimensions	
■	in	cm		in	cm		in	cm
A	28 13/16	72.34		35 1/8	89.1		45 3/4	116.2
B	23 1/16	58.6		23 1/16	58.6		23 1/16	58.6
C	22	55.88		22	55.8		22	55.88
D	30	76.2		36 1/16	91.6		46 13/16	118.90
E*	6 7/8 - 9	17.46 - 22.6		6 7/8 - 9	17.46 - 22.6		6 7/8 - 9	17.46 - 22.6
F	24 3/16	62.3		24 3/16	62.3		24 3/16	62.3
G	30	76.2		36 1/16	91.6		46 13/16	118.90

\* Recommend 8" for custom cabinetry

**NOTE:** Tolerances for cutout dimensions are ± 1/16"

**IMPORTANT:** Because of continuing product improvements, Jenn-Air reserves the right to change specifications without notice. Dimensional specifications are provided for planning purposes only. For complete details see installation instructions packed with product before selecting cabinetry, making cutouts or beginning installation.

## DESIGNER LINE AND PRO-STYLE® GAS COOKTOPS

### GAS DOWNDRAFT COOKTOP FEATURES AND SPECIFICATIONS

MODEL #	JGD 8130AD	JGD 8345AD	Pro-Style® JGD 8348CD
	30"	45"	48"
Overall Width (in)	30	45	46 1/16
Overall Depth (in)	21 3/4	21 3/4	24 3/16
Cutout Width (in)	29	43 3/4	45 3/4
Cutout Depth (in)	21	21	23 1/16
Blower Assembly Clearance <sup>A</sup> (below countertop) (in)	13 1/16	13 1/16	15 1/16
Total Connected Load <sup>B</sup> -KW	0.45	0.45	0.45
BTUs (natural/LP) <sup>C</sup>	RF10,000/9000 RR10,000/9000 LF8,000/7500 LR8,000/7500	RF10,000/9000 RR10,000/9000 CF10,000/9000 CR10,000/9000 LF8,000/7500 LR8,000/7500	RF10,000/9000 RR10,000/6500 CF10,000/9000 CR10,000/6500 LF8,000/7500 LR8,000/7500
Jenn-Air Platinum Warranty	•	•	•
Downdraft Ventilation <sup>D</sup>	•	•	•
Two-Speed Fan	•	•	•
Indoor Grilling	•	•	•
E-ven Heat™ Grill Assembly Included	•	•	•
Accepts Gas Burner Module <sup>E</sup>	•	•	•
Accepts Grill/Cooktop Accessories <sup>E</sup>	•	•	•
Accepts Wok Accessory <sup>F</sup>	•	•	•
Excalibur® Nonstick Grill Grate Finish <sup>H</sup>	•	•	•
Gas Sealed Burners Included	2	4	4
Porcelain-On-Cast-Iron Burner Grates	•	•	•
Infinite Burner Control Settings	•	•	•
Electronic Pilotless Ignition	•	•	•
Convertible to LP Gas <sup>I</sup>	•	•	•
Countertop Installation	•	•	•
Island/Peninsula Installation	•	•	•
Pro-Style® Model With Professional Styling			•
Drop-Down Extendible Control Panel			•
Accepts Optional 12" Backsplash <sup>J</sup>			•
Color Descriptions: B = Black Porcelain, W = White Porcelain, SB = Stainless Steel, Black Accents, P = Pro-Style™ Stainless Steel	B, W, SB	B, W	P
Color Indicators (add to end of model number) B = Black, W = White, S = Stainless Steel P = Pro-Style™ Stainless Steel	B,W,S	B,W	P
Available in Canada	•	•	•
Approximate Shipping Weight (lbs./kg)	76 / 34	76 / 34	76 / 34

- Feature included.
- A. Blower can be swiveled 90°.
- B. Electric supply for pilotless ignition:  
120 VAC, 60 HZ. Power cord supplied.
- C. Regular connection 1/2" N.P.T. (male pipe).
- D. Can vent up to 60 equivalent feet.
- E. Electric grill accessories are designed for use ONLY with electric cooktops. Gas grill accessories are designed for use ONLY with gas cooktops. These accessories are not interchangeable. Gas grill accessories include a griddle and one-piece grill cover.
- F. Model AO142 Wok is designed for use with gas surface burners, conventional coil and radiant elements.
- G. Grill assembly may be used in left bay only. An optional gas two-burner module may be used in place of the grill assembly.

- When substituting the two-burner module for the grill the rating will be 8,000 BTU for each burner.
- H. Grill grates are coated with Excalibur® finish. Excalibur® is a registered trademark of Whitford Corp.
- I. Jenn-Air® gas cooktops are factory-set for natural gas but can be converted to LP. Conversion kit is shipped with cooktop. It is recommended that a qualified serviceman perform the conversion.
- J. Order stainless steel backsplash model A509S for cooktop model JGD8348CDP.

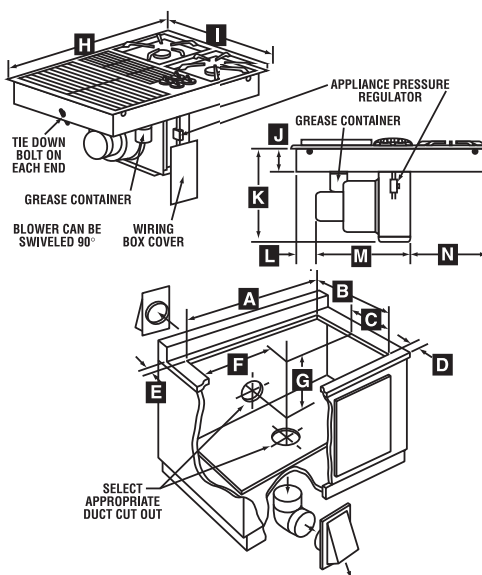
**All cartridges and accessories are optional.**  
**All Jenn-Air® appliances are appropriately UL, AGA, CSA or CGA approved.**

### CIRCUIT PROTECTION SPECIFICATION GUIDE

Recommended Minimum		
K.W. Rating On Serial Plate	Circuit Protection In Amperes	Wire Size AWG
0 – 4.8	20	12
4.9 – 6.9	30	10
7.0 – 9.9	40	8
10.0 – 11.9	50	8
12.0 – 14.9	60	6

**IMPORTANT:** Because of continuing product improvements, Jenn-Air reserves the right to change specifications without notice. Dimensional specifications are provided for planning purposes only. For complete details see installation instructions packed with product before selecting cabinetry, making cutouts or beginning installation.

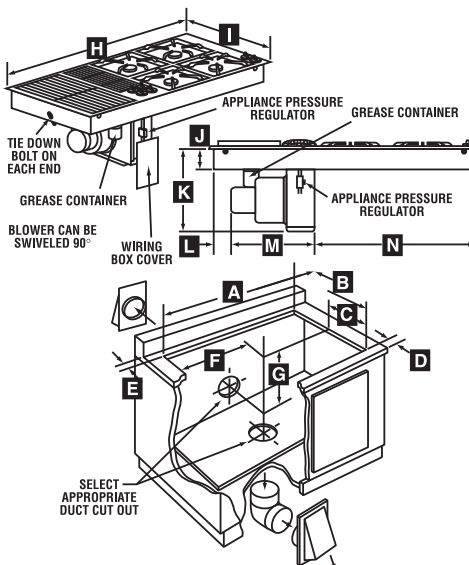
### GAS DOWNDRAFT COOKTOP DIMENSION DIAGRAMS



30" JGD8130 Dimensions		
	in	cm
A	29 ± 1/16	73.7 ± .2
B	21 ± 1/16	53.3 ± .2
C	7 7/16 min.	19.2
D	1 1/8 min.	4.8
E	1 1/16 min.	2.4
F	9 3/8	23.8
G	13	33.0
H	30	76.2
I	21 3/4	55.2
J*	3 1/2 min.	8.9
K	13 13/16	35.1
L	2 min.	5.1
M	13 3/4	34.9
N	11 13/16	30.0

\* Measured from top of countertop, not top of unit.

### GAS DOWNDRAFT COOKTOP DIMENSION DIAGRAMS



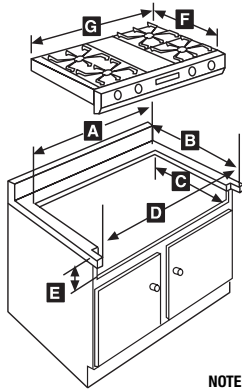
45" JGD8345 Dimensions		
	in	cm
A	43 1/4 ± 1/16	109.9 ± .2
B	21 ± 1/16	53.3 ± .2
C	7 7/16	19.2
D	1 7/8 min.	4.8
E	1 1/16 min.	2.4
F	9 3/8	23.8
G	13	33.0
H	45	114.3
I	21 3/4	55.2
J*	3 1/2 min.	8.9
K	13 13/16	35.1
L	2 min.	5.1
M	13 3/4	34.9
N	26 3/4	68.0

\* Measured from top of countertop, not top of unit.

**IMPORTANT:** Cutout Dimensions Are Critical. Refer to installation instructions packaged with product BEFORE making cutouts.

**IMPORTANT NOTE:** When replacing a Jenn-Air® 48" cooktop (CVE4370 or CVE4380) with a Jenn-Air® 45" cooktop (JED8345 or JGD8345) using existing counter, a black or white trim ring to fill the countertop gap may be purchased by calling Micro-Trim at 714-241-7046 or 800-338-8746.

## PRO-STYLE® GAS DOWNDRAFT COOKTOP DIMENSION DIAGRAMS

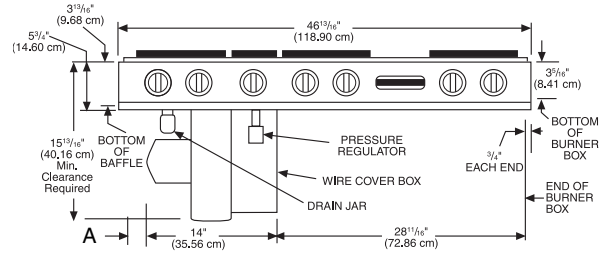


48" JGD8348CDP Dimensions		
	in	cm
A	45 3/4	116.2
B	23 1/16	58.6
C	22	55.88
D	46 3/8	117.8
E*	6 7/8 - 9	17.46 - 22.6
F	24 1/16	62.3
G	46 1/16	118.90

\* Recommend 8" for custom cabinetry

NOTE: Tolerances for cutout dimensions are  $\pm 1/16$ "

## MODEL JGD8348CDP



Dimension A - Provide 2" min. (5.08 cm) cabinet clearance to motor for cooling purpose.

## Designer Line Downdraft Cooktops Cartridge and Accessory Usage

DOWNDRAFT MODELS								
ACCESSORIES <sup>A</sup>	MODEL #	ELECTRIC				GAS		
		JED8430AD	JED8130AD	JED8230AD	JED8345AD	JGD8130AD	JGD8345AD	JGD8348CDP
Big Pot Element 2100 watt <sup>B</sup>	A145A	*		*	*			
Grill Cover - Designer Line Electric	A341/A341W	*		*	*			
Grill Cover - Designer Line/ Pro-Style® Gas	AG341B/W					*	*	*
Electric Grill Assembly 1900 watt	JEA8000ADB			*	*			
Griddle <sup>C</sup> - Designer Line Electric	JEA8200ADX	*		*	*			
Griddle <sup>C</sup> - Designer Line/ Pro-Style® Gas	JGA8200ADX					*	*	*
Wok <sup>D</sup>	A0142	*	*	*	*	*	*	*
Backsplash - 12" Stainless Steel	A509S							*
Storage Tray for Electric Cartridge	A350	*		*	*			
<b>CARTRIDGES</b> (end plug-in; use in open bay(s) and/or in place of grill)								
Conventional Coil (large element 2100W; small element 1250W)	JEA7000ADB/W/S	*		*	*			
Radiant Element (large element 1800W; small element 1200W)	JEA8120ADB/W	*		*	*			
Gas Two-Burner Module	JGA8100ADB/W					*	*	*

\* Accepts optional cartridge/accessory.

- Electric designated accessories and gas designated accessories are not interchangeable. Conventional cooktop models JEC8430, JEC9530, JEC0530, JEC8536, JEC9536, JEC0536, JGC8430, JGC9430, JGC8536, JGC9536, JGC8645, JGCP430, JGCP636, JGCP648 and downdraft cooktop model JED8430 accept the A0142 wok accessory only. Electric conventional cooktop models JEC8430, JEC9530, JEC0530, JEC8536, JEC9536 and JEC0536 also accept HV303/HV363 telescoping downdraft ventilation.
- A145A is a raised element that may be used to replace the large element on conventional coil cartridge model JEA7000. May also be used to replace the large coil element on cooktop model JED8130. On models JED8230 and JED8345 the big pot element may be used only when the JEA7000 coil element cartridge is in place.
- The griddle is placed over the electric grill element or gas grill burner. The electric griddle may be used only with the electric grill element. The gas griddle may be used only with the gas grill burner.
- Model A0142 Wok is for use on gas surface burners and electric coil and radiant elements.

**NOTE:** Pro-Style® conventional cooktops also accept an optional backsplash. Order stainless steel backsplash model A509S for cooktop model JGCP648ADP. Order stainless steel backsplash model JXT9027AAP for cooktop model JGCP636ADP. Order stainless steel backsplash model JXT9024AAP for cooktop model JGCP430ADP.

Conventional Pro-Style® cooktops also accept an optional Pro-Style™ hood. Order stainless steel hood model JXT9048CDP (18" height) for cooktop model JGCP648ADP. Order stainless steel hood model JXT9036CDP (18" height) or model JXT9136CDP (10" height) for cooktop model JGCP636ADP. Order stainless steel hood model JXT9030CDP (18" height) or model JXT9130CDP (10" height) for cooktop model JGCP430ADP.

**IMPORTANT:** Because of continuing product improvements, Jenn-Air reserves the right to change specifications without notice. Dimensional specifications are provided for planning purposes only. For complete details see installation instructions packed with product before selecting cabinetry, making cutouts or beginning installation.



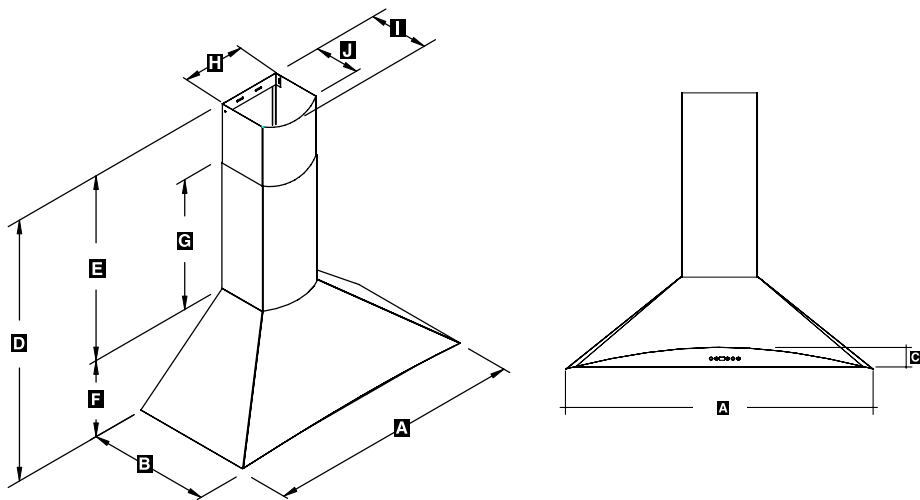
KITCHEN VENTILATION

Chimney Hoods & Integrated Ventilation System Features and Specifications							
WALL MOUNT CHIMNEY HOODS					ISLAND MOUNT CHIMNEY HOODS		INTEGRATED VENTILATION SYSTEM FOR CUSTOM BUILT-IN HOODS
MODEL #	JXT8836AD	JXT8042AD	JXT8036AD	JXT8030AD	JXT8142AD	JXT8136AD	JXT7036AD <sup>A</sup>
	36"	42"	36"	30"	42"	36"	36"
Overall Width (in)	35 3/8	42	36	30	42	35 3/8	34 3/8
Overall Depth (in)	18 1/2	22	22	22	25 1/2	25 1/2	16 3/16
Rating (CFM) <sup>B</sup>	650	650	650	650	650	650	1150
Blower(s)	Single	Single	Single	Single	Single	Single	Dual
Electronic Touch Controls	•	•	•	•	•	•	
Slide Controls							•
Speed Settings	6	6	6	6	6	6	3
Delayed Shutoff for Fan & Light	•	•	•	•	•	•	
Filterless Self-Clean Model							•
Clean Filter Indicator	•	•	•	•	•	•	
Dishwasher Safe Aluminum Filters	•	•	•	•	•	•	
Lighting Levels	2	2	2	2	2	2	1
Lighting Type	50W Halogen	50W Halogen	50W Halogen	50W Halogen	50W Halogen	50W Halogen	50W Halogen
Number of Lights (bulbs included)	2	2	2	2	4	4	3
Discharge Size/Direction	6" Vertical	6" Vertical	6" Vertical	6" Vertical	6" Vertical	6" Vertical	8" Vertical
Optional Ductless Installation <sup>C</sup>	•	•	•	•	•	•	
Replacement Carbon Filters	JFLTRC8836	JFLTRC8036	JFLTRC8036	JFLTRC8030	JFLTRC8036	JFLTRC8036	
Optional Chimney Extension for 9'-12" Ceiling	CHMEXT8836	CHMEXT8036	CHMEXT8036	CHMEXT8036	CHMEXT8136	CHMEXT8136	
Sleek Curved Styling	•						
Color Indicator (add to end of model number) S=stainless steel	S	S	S	S	S	S	S
Available in Canada	•	•	•	•	•	•	•
Approximate Shipping Weight (lbs./kg)	35 / 16	60 / 27	53 / 24	53 /24	88 / 40	78 / 35	55 / 25

- Feature included.
- A. Stainless steel integrated hood liners are available for using the JXT7036 ventilation system in 42" (order liner JXT7142ADS) or 48" (order liner JXT7148ADS) installations.
- B. Ducting configurations and length can affect airflow rates. Ratings shown are based on hoods with correctly installed ducting.
- C. No conversion kit is required for ductless installation for wall mount and island mount chimney hoods. Order carbon filters referenced in chart above that snap into the hood.

**IMPORTANT: Cutout Dimensions Are Critical. Refer to installation instructions packaged with product BEFORE making cutouts.**

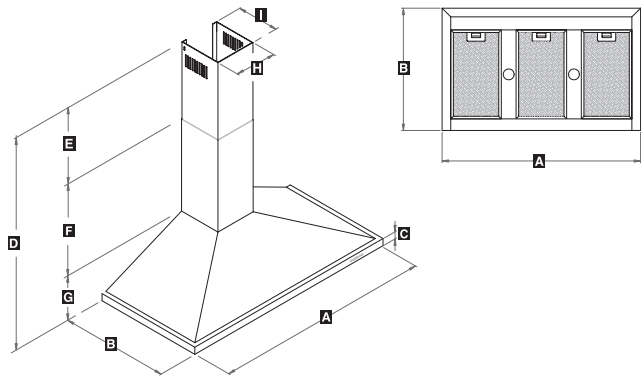
DIMENSION DIAGRAM FOR MODEL JXT8836 WALL MOUNT CHIMNEY HOOD



Dimensions		
■	inches	cm
A	35.43	90
B	18.5	47
C	2 3/4	6.99
D	43.93 - 30.15	111.58 - 76.58
E	19.68-33.46	49.99 - 84.99
F	10.47	26.59
G	17.71	44.98
H	8.74	22.2
I	7.75	19.69
J	6.57	16.69

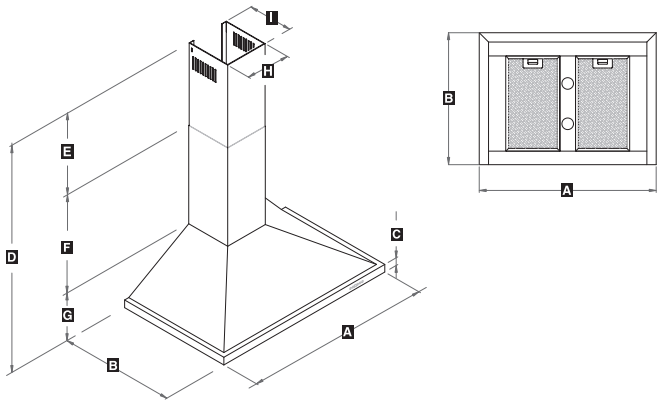
**IMPORTANT:** Because of continuing product improvements, Jenn-Air reserves the right to change specifications without notice. Dimensional specifications are provided for planning purposes only. For complete details see installation instructions packed with product before selecting cabinetry, making cutouts or beginning installation.

DIMENSION DIAGRAM FOR MODEL JXT8036/JXT8042 WALL MOUNT CHIMNEY HOOD



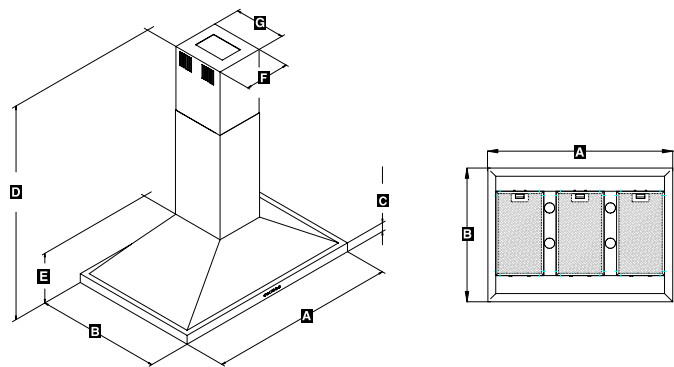
Dimensions				
MODEL#	JXT8036		JXT8042	
■	inches	cm	inches	cm
A	36	91.4	42	106.6
B	22	55.9	24	61
C	1.18	3	1.18	3
D	28.94 - 46.65	73.5 - 118.5	33.07 - 54.33	84 - 138
E	21.65	55	25.59	65
F	21.65	55	25.59	65
G	5.31	13.5	5.31	13.5
H	10.43	26.5	10.43	26.5
I	10.43	26.5	10.43	26.5

DIMENSION DIAGRAM FOR MODEL JXT8030 WALL MOUNT CHIMNEY HOOD



Dimensions		
■	inches	cm
A	30	76.2
B	22	55.9
C	1.18	3
D	28.94 - 46.65	73.5 - 118.5
E	21.65	55
F	21.65	55
G	5.31	13.5
H	10.43	26.5
I	10.43	26.5

DIMENSION DIAGRAM FOR MODEL JXT8136/JXT8142 ISLAND MOUNT CHIMNEY HOOD

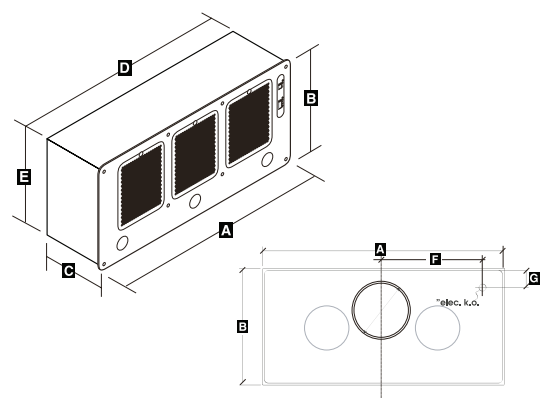


Dimensions				
MODEL#	JXT8136		JXT8142	
■	inches	cm	inches	cm
A	35.43	90	42	106.8
B	25.6	65	25.6	65
C	1.18	3	1.18	3
D	28.94 - 46.65	73.5 - 118.5	33.07 - 54.33	84 - 138
E	5.31	13.5	5.31	13.5
F	10.55	26.5	10.35	26.3
G	11	28.0	10.83	27.5

**IMPORTANT:** Because of continuing product improvements, Jenn-Air reserves the right to change specifications without notice. Dimensional specifications are provided for planning purposes only. For complete details see installation instructions packed with product before selecting cabinetry, making cutouts or beginning installation.

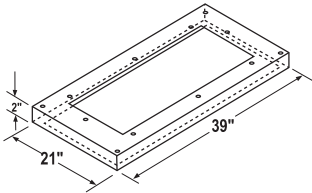
KITCHEN VENTILATION

DIMENSION DIAGRAM FOR MODEL JXT7036 INTEGRATED VENTILATION SYSTEM

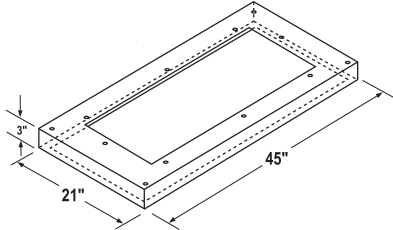


Dimensions		
	inches	cm
A	34 3/8	87.31
B	16 1/16	41.12
C	8	20.32
D	33 3/8	84.77
E	15 1/4	38.74
F	15	38.1
G	2	5.08

JXT7142 liner for 42" installation



JXT7148 liner for 48" installation



Undercabinet Hoods Features and Specifications						
Model #	JXT5836AD	UXT5436AD	UXT5236AD	JXT5830AD	UXT5430AD	UXT5230AD
	36"			30"		
Overall Width (in)	36	36	36	30	30	30
Overall Depth (in)	22	22 1/4	22 1/4	22	22 1/4	22 1/4
Rating (CFM) <sup>A</sup>	400	400	300	400	400	300
Blower(s)	Single	Single	Single	Single	Single	Single
Electronic Touch Controls	•	•		•	•	
Slide Controls			•			•
Speed Settings	3	3	3	3	3	3
Delayed Shutoff for Fan & Lights	•	•		•	•	
Filterless Self-Clean Model		•	•		•	•
Clean Filter Indicator	•			•		
Dishwasher Safe Aluminum Mesh Filters	•			•		
Lighting Levels	2	2	1	2	2	1
Lighting Type	50W Halogen	50W Halogen	Incandescent	50W Halogen	50W Halogen	Incandescent
Number of Lights (bulbs included)	2	2	2	2	2	2
Discharge Size/Direction	3-Way Convertible	3-Way Convertible	3-Way Convertible	3-Way Convertible	3-Way Convertible	3-Way Convertible
Optional Ductless Installation <sup>B</sup>	•	•	•	•	•	•
Optional Ductless Installation Kit		HRECUXT36	HRECUXT36		HRECUXT30	HRECUXT30
Replacement Carbon Filters	JFLTRC5836	HCFLTUXT36	HCFLTUXT36	JFLTRC5830	HCFLTUXT30	HCFLTUXT30
Sleek Curved Styling	•			•		
Color Indicators (add to end of model number) B=black, W=white, Q=bisque S=stainless steel	B,W,S	B,W,Q,S	B,W,Q,S	B,W,S	B,W,Q,S	B,W,Q,S
Generic Model		•	•		•	•
Available in Canada	•	•	•	•	•	•
Approximate Shipping Weight (lbs./kg)	35 / 16	31 / 14	31 / 14	32 / 14.5	31 / 14	31 / 14

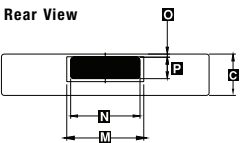
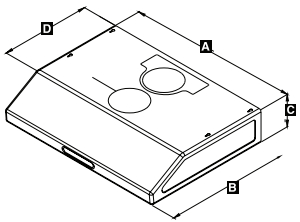
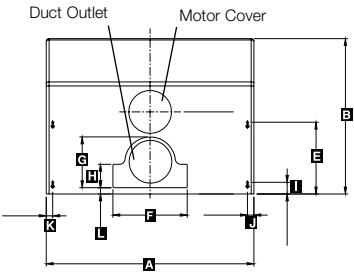
- Feature included.
- A. Ducting configurations and length can affect airflow ratings. Ratings shown are based on hoods with correctly installed ducting.
- B. No conversion kit is required for ductless installation for JXT5836 and JXT5830 model hoods. Order carbon filters referenced in chart above that snap into the hood. For UXT5436, UXT5236, UXT5430 and UXT5230 model hoods order kits and replacement carbon filters referenced in chart above for ductless installation. It is recommended to always exhaust air outside of the home if possible as the hood is most effective and efficient as an exhaust unit.

**IMPORTANT: Cutout Dimensions Are Critical. Refer to installation instructions packaged with product BEFORE making cutouts.**

**IMPORTANT:** Because of continuing product improvements, Jenn-Air reserves the right to change specifications without notice. Dimensional specifications are provided for planning purposes only. For complete details see installation instructions packed with product before selecting cabinetry, making cutouts or beginning installation.

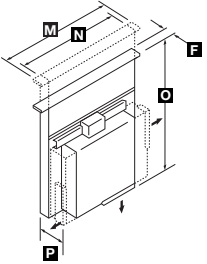
UNDER CABINET HOOD DIMENSION DIAGRAMS

Models UXT5230, 5236, 5430, 5436



Dimensions		
Models	UXT5230, 5236, 5430, 5436	
	inches	cm
A	30 or 36	79.1 or 91.1
B	22 1/4	56.4
C	6	15
D	15 5/8	39.8
E	10 1/4	26.05
F	10 1/2	27
G	7 1/4	18.4
H	3 3/8	8.5
I	1 3/4	4.25
J	1	2.35
K	1	2.35
L	7/8	2.3
M	11	28
N	10	25.2
O	1/2	1.15
P	3	7.8

HV303/HV363 DOWNDRAFT VENTILATION DIMENSION DIAGRAMS



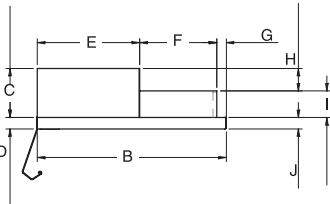
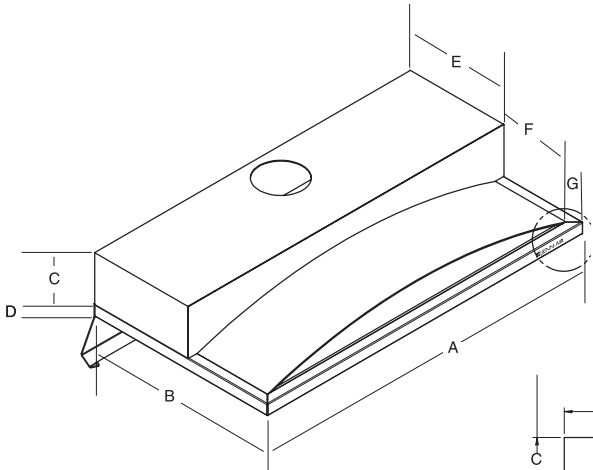
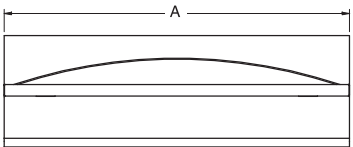
PRODUCT DIMENSIONS (in/cm)	
F	2/5.1
M	30/76.2 or 36/91.4
N	26 1/4/66.7 or 32 1/4/81.9
O	29 1/2/74.9
P	7/17.8

**NOTE:** Countertop cutout depth = cooktop cutout depth + 1 3/4".

TELESCOPING DOWNDRAFT VENTILATION FEATURES AND SPECIFICATIONS

MODEL #	HV303	HV363
	30"	36"
Overall Height (in)	29 1/2	29 1/2
Overall Width (in)	30	36
Overall Depth (in)	7	7
Rating (cfm)	500	500
Variable-Speed Fan	•	•
Touch Activated	•	•
Telescoping Operation	•	•
Two Washable Aluminum Grease Filters	•	•
Vertical or Horizontal	•	•
Exterior Venting	•	•
Recommended For Use	•	•
With Electric Cooktops Only	•	•
Optional White Cap	WC303	WC363
Optional Stainless Steel Cap	SC303	SC363
Available in Canada	•	•
Approximate Shipping Weight (lbs./kg.)	53/24	58/26

Models JXT5830, 5836



Dimensions				
Models	JXT5830		JXT5836	
	inches	cm	inches	cm
A	30	76.2	36	91.4
B	16.685	50	16.685	50
C	6.69	13	6.69	13
D	1.18	3	1.18	3
E	10.63	27.1	10.63	27.1
F	8.03	20.4	8.03	20.4
G	1	2.5	1	2.5
H	2.36	6	2.36	6
I	2.76	7	2.76	7
J	1.18	3	1.18	3

**IMPORTANT:** Because of continuing product improvements, Jenn-Air reserves the right to change specifications without notice. Dimensional specifications are provided for planning purposes only. For complete details see installation instructions packed with product before selecting cabinetry, making cutouts or beginning installation.



KITCHEN VENTILATION

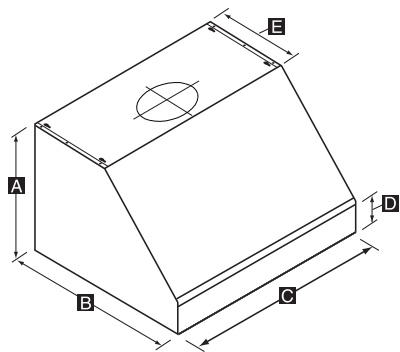
Pro-Style™ Hoods Features and Specifications					
Model #	JXT9048CD	JXT9036CD	JXT9136CD	JXT9030CD	JXT9130CD
	48"	36"		30"	
Overall Width (in)	48	36	36	30	30
Overall Height (in)	18	18	10	18	10
Overall Depth (in)	24	24	22	24	22
Rating (CFM)*	1100	1100	650	1100	650
Blower(s)	Dual	Dual	Dual	Dual	Dual
Electronic Touch Controls	•	•	•	•	•
Speed Controls	6	6	6	6	6
Delayed Shutoff for Fan & Lights	•	•	•	•	•
Dishwasher Safe Stainless Steel Baffle Filters	•	•	•	•	•
Lighting Levels	2	2	2	2	2
Lighting Type	50W Halogen	50W Halogen	50W Halogen	50W Halogen	50W Halogen
Number of Lights (bulbs included)	3	2	2	2	2
Food Warming Lamps (bulbs not included) <sup>†</sup>	2	2		2	
Discharge Size/Direction	8" / Vertical	8" / Vertical	3-Way / 6"	8" / Vertical	3-Way / 6"
Pro-Style™ Stainless Steel Styling	•	•	•	•	•
Color Indicator (add to end of model number)					
P=Pro-Style stainless steel	P	P	P	P	P
Available in Canada	•	•	•	•	•
Approximate Shipping Weight (lbs./kg)	103 / 47	88 / 40	61 / 28	80 / 36	55 / 25
Optional Soffit Chimney (JXA Series)C	JXA9048CDP	JXA9036CDP	JXA9036CDP	JXA9030CDP	JXA9030CDP
Width (in)	48	36	36	30	30
Stainless Steel Finish	•	•	•	•	•
Approximate Shipping Weight (lbs./kg)	36 / 16	28 / 13	28 / 13	25 / 11	25 / 11
Optional Wallsplash (JXA9000 Series)	JXA9001CDP	JXA9002CDP	JXA9002CDP	JXA9003CDP	JXA9003CDP
Width (in)	48	36	36	30	30
Stainless Steel Construction	•	•	•	•	•
Two Food Warming/Storage Shelves	•	•	•	•	•
Approximate Shipping Weight (lbs./kg)	30 / 14	25 / 11	25 / 11	23 / 10	23 / 10

- Feature included.
- A. Ducting configurations and length can affect airflow ratings. Ratings shown are based on hoods with correctly installed ducting.
- B. Bulbs for warming lamps must be purchased separately. Use only BR40, size 250W max. infrared bulbs for warming lamps.
- C. Use when installation location has no soffit.

**Important:** Because of continuing product improvements, Jenn-Air reserves the right to change specifications without notice. Dimensional specifications are provided for planning purposes only. For complete details see installation instructions packed with product before selecting cabinetry, making cutouts or beginning installation.

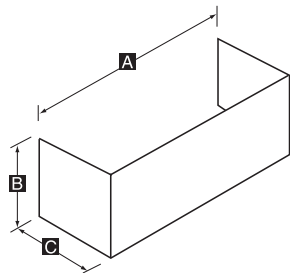
**IMPORTANT:** Because of continuing product improvements, Jenn-Air reserves the right to change specifications without notice. Dimensional specifications are provided for planning purposes only. For complete details see installation instructions packed with product before selecting cabinetry, making cutouts or beginning installation.

PRO-STYLE™ HOODS



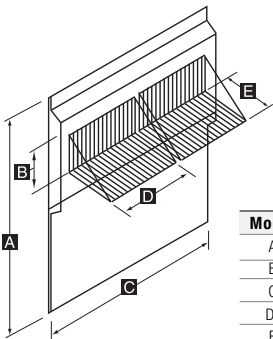
Model	JXT9048CDP	JXT9036CDP	JXT9136CDP	JXT9030CDP	JXT9130CDP
A	18"	18"	10"	18"	10"
B	24"	24"	22"	24"	22"
C	48"	36"	36"	30"	30"
D	4"	4"	4"	4"	4"
E	12"	12"	12"	12"	12"

JXA9000 SERIES SOFFIT CHIMNEY



Model	JXA9048CDP	JXA9036CDP	JXA9030CDP
A	48"	36"	30"
B	12"	12"	12"
C	12"	12"	12"

JXA9000 SERIES WALLSPLASH

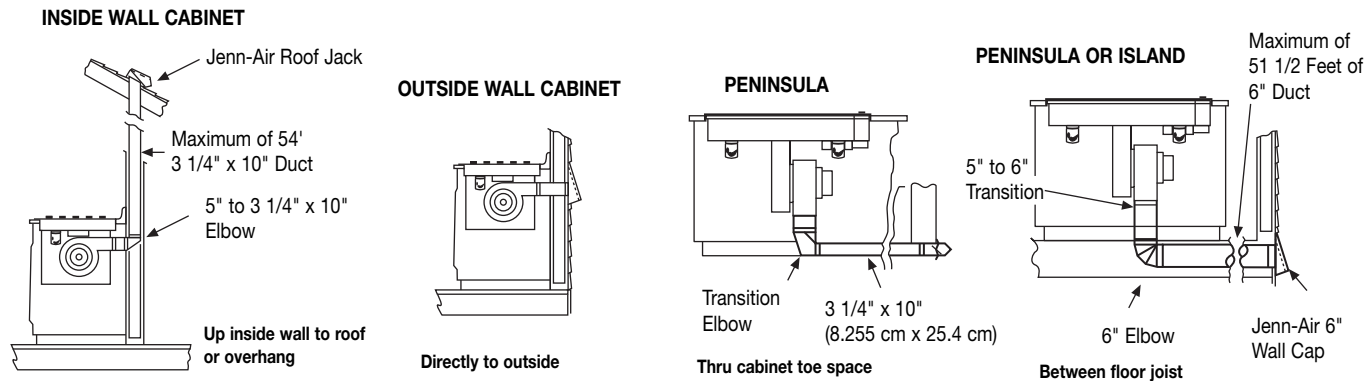


Model	JXA9001CDP	JXA9002CDP	JXA9003CDP
A	33 1/2"	33 1/2"	33 1/2"
B	4"	4"	4"
C	48"	36"	30"
D*	14"	14"	14"
E	10"	10"	10"

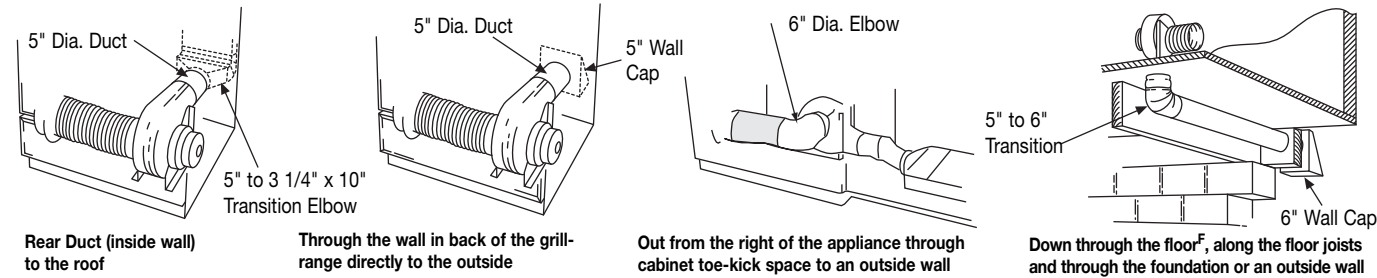
\* Two shelves are included, each shelf is 14". Shelves can be installed horizontally (as shown above) or vertically (as shown on page 68).

DUCTING DATA  
DOWNDRAFT-RANGES AND COOKTOPS

TYPICAL COOKTOP DUCT ARRANGEMENTS



TYPICAL GRILL-RANGE DUCT ARRANGEMENTS



Duct Length Recommendations <sup>A</sup>		
(Maximum) <sup>B</sup>		
	5" Diameter <sup>C</sup>	6" Diameter or 3 1/4" x 10" <sup>C</sup>
All Electric <sup>D</sup>	10'	60'
All Gas <sup>E</sup>	10'	60'

The Long Duct Run

With Jenn-Air's powerful blower, Jenn-Air downdraft grill-ranges and grill-range cooktops can vent up to the equivalent of 60 feet.

Here's how it works.

For duct runs equivalent to 30' or less, install as received. For duct runs equivalent to 31' to 60', simply snap out the restrictor ring on the blower inlet housing. See Installation Instructions for specific information.

Grill-Range/Cooktop Ducting Accessories

**Model A403 Surface Wall Cap**—Single damper; down discharge. Fits 3-1/4" x 10" duct.

**Model A405 Surface Wall Cap**—Single spring-loaded damper; down discharge. Fits 5" diameter duct. Requires opening 5-1/2" in diameter.

**Model A406 Surface Wall Cap**—Single spring-loaded damper; down discharge. Fits 6" diameter duct. Requires opening 6-1/2" in diameter.

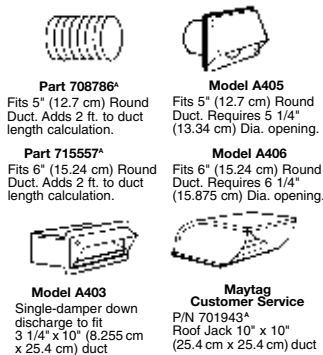
**Model A456 Transition**—5" to 6" round duct.

**Important:** Because of continuing product improvements, Jenn-Air reserves the right to change specifications without notice. Dimensional specifications are provided for planning purposes only. For complete details see installation instructions packed with product before selecting cabinetry, making cutouts or beginning installation.

Notes:

- A. For venting up to the equivalent of 60', use standard steel ducting and elbows.
- B. IMPORTANT: See installation instructions shipped with product before selecting island cabinetry, making cutouts or beginning installation. For best performance, it is suggested that no more than three 90 degree elbows be used with 6" or 3 1/4" x 10" duct. Each foot of metal flex duct counts as two feet of rigid metal duct. Each flex elbow counts as two metal elbows. For longer duct runs of 31' to 60', the restrictor ring on the blower inlet housing must be removed. 6" round or 3 1/4" x 10" duct must be used for ducting beyond 10' (up to 60'). Failure to follow ducting recommendations or use recommended ducting accessories may result in substandard performance.
- C. Count each 90 degree elbow as 5' of duct.
- D. When venting electric ranges or cooktops, 5" diameter round duct may be used to vent straight out the back of appliance and directly through the wall for runs of 10' or less.
- E. When venting dual-fuel ranges and gas cooktops, 5" diameter round duct must be used for runs of 10' or less.
- F. When installing through a slab, it is essential that the system be properly calculated, designed and installed before the house is built, when the slab is poured.

WALL CAPS/ THERMAL BREAKS



A. The above model numbers may be ordered through your authorized service dealer.

Do	Don't
Use 5" (12.7 cm), 6" (15.24 cm), or 3 1/4" x 10" (8.255 cm x 25.4 cm) pipe as recommended for your model	Use 4" (10.16 cm) dryer vent pipe or flex duct*
Use recommended wall caps	Use laundry-type wall cap
Use no more than one 90° elbow with five inch (12.7 cm) duct or three 90° elbows with six inch (15.2 cm) or 3 1/4" x 10" (8.255 cm x 25.4 cm) duct	Overrun your system with too many bends and turns
Duct system to the outside	Vent into an attic or crawl space, walls and concealed space of building
Mix 6" (15.24 cm) duct and 3 1/4" x 10" duct (8.255 cm x 25.4 cm) within the same system if necessary	Reduce back to 5" (12.7 cm) system after using 6" (15.24 cm) or 3 1/4" x 10" (8.255 cm x 25.4 cm)
Tape all joints securely with several wraps of tape	Butt joints, always use male-female connections in direction of flow
Use one unit per duct system	Exhaust more than one unit into a single system

\* Although not recommended, 5" or 6" metal flex duct may be used. Due to the irregular surface of flexible ducting, each foot of flex duct counts as two (2) feet of regular metal duct. Also each elbow made in flex duct would count twice as much as standard metal elbow. The best idea with flexible ducting is to keep it as short and as straight as possible.



## PLATINUM WARRANTY\*

All Jenn-Air® appliances carry a minimum warranty of 1st year free parts and labor, plus a 2nd year free parts only. Warranties begin on the date of purchase. The chart below details specific warranties by product category. The years after date of original purchase are listed across the top.

PRODUCT	YEARS								
		1	2	3	4	5	10	12	Lifetime
COOKTOP, WALL OVEN, CONVENIENCE OVEN, RANGE <i>(Gas or Electric)</i>	PARTS	All	All	Glass-Ceramic Cooktop Due to Thermal Breakage; Electric Heating Elements Including Surface Elements, Bake and Broil Elements; Electronic Controls; Gas Sealed Burners					
	LABOR	Yes							
WARMING DRAWER	PARTS	All	All						
	LABOR	Yes							
COOKING ACCESSORIES	PARTS	All	All	Glass-Ceramic Top Due to Thermal Breakage; Electric Surface Heating Elements; Gas Sealed Burners					
	LABOR	Yes							
COMBINATION MICROWAVE/WALL OVEN	PARTS	All	All	Electronic Control Panel Components; Electric Bake and Broil Elements; Microwave Energy Components					
	LABOR	Yes							
BUILT-IN MICROWAVE  OVER-THE-RANGE MICROWAVE	PARTS	All	All	Limited to Magnetron Tube, Touch Pad Assembly, Microprocessor					
	LABOR	Yes	Yes						
HOOD	PARTS	All	JXT Models						
	LABOR	Yes							
DISHWASHER	PARTS	All	All	All	Microprocessor and Touch Pad Assemblies, Cabinet Front Panel Rust, Wash System Pump and Motor, Wash Arms and Sensor Package, DuraGuard® Rack Finish				
	LABOR	All	Door Liner (if liner fails due to water leak) Lifetime Full Warranty Dishwasher Replacement (if tub fails due to water leak) Lifetime Full Warranty						
BUILT-IN REFRIGERATOR	PARTS	All	All	All	Sealed Refrigeration System (consisting of the Compressor, Evaporator, Condenser, Drier and Connecting Tubing) which fails in normal home use.				
	LABOR	All	All	All	Mileage and transportation charges, if required, shall be the responsibility of the owner.				
REFRIGERATOR  WINE CELLAR, UNDER COUNTER REFRIGERATOR, ICE MAKER	PARTS	30 Days for Water Filter Cartridge	All	Limited to Interior Cabinet Liner (exclusive of door liner) and Sealed Refrigeration System					
	LABOR	Yes	(Installation labor only) Limited to Interior Cabinet Liner (exclusive of door liner) and Sealed Refrigeration System						
COMPACTOR	PARTS	All	All						
	LABOR	Yes							
SMALL APPLIANCES  MIXER BLENDER	PARTS	Hassle-Free Replacement							
	LABOR								

\*Warranty stated covers only those models specified in this catalog. See a Jenn-Air® dealer for model specific warranty information.



## OWNER'S RESPONSIBILITIES

The customer has certain responsibilities which must be satisfied to qualify for coverage under these warranties. For all products, the owner is responsible for providing normal care and maintenance in accordance with the Use & Care Instructions, providing proof of purchase on request, proper installation and making the appliance reasonably accessible for service. For refrigerators, the owner will pay for service calls or trip charges to analyze sealed system defects, including related labor costs and mileage and/or transportation, if required, for the service second through fifth years.

## WARRANTY SERVICE

Under the full warranty, service must be performed by an Authorized Jenn-Air Service Contractor. To obtain service, contact the dealer from whom the unit was purchased, an authorized Service Contractor, or contact Jenn-Air Customer Assistance, c/o Maytag Appliances Sales Company, P.O. Box 2370, Cleveland, TN 37320, 1-800-JENN-AIR (U.S. and Ontario) or 1-423-472-3333. Please include model number, serial number and date of original retail purchase in all correspondence. Service will be provided during normal business hours. All replacement parts assume the unused portion of this warranty. This warranty gives you specific legal rights, and you may also have other rights which vary from state to state.

## CANADIAN RESIDENTS

This warranty covers only an appliance installed in Canada that has been certified to a National Standard of Canada unless the appliance is brought into Canada due to transfer of residence from the United States to Canada.



[jennair.com](http://jennair.com)