

Quick Start Guide

LocationFree TV

LF-X11

LocationFree is a registered trademark of Sony Corporation. All other names of systems, products, and services are trademarks of their respective owners. In this manual, the ™ or ® marks are not specified.

© 2005 Sony Corporation Printed in Japan



If you have additional questions related to the use of this product after reading this Quick Start Guide and the Operating Instructions, please call our LocationFree™ Customer Support.

LocationFree™ Customer Support
 1-866-925-SONY (7669) - U.S. & Canada
 1-239-768-7688 - International
 9:00 a.m. - 9:00 p.m. EST Mon.-Fri. (English Only)

LocationFree™ Web Sites
 <U.S.>
www.sony.com/locationfree/
 <Canada>
www.sonymstyle.ca/locationfree/

Setup Summary

STEP 1 Preparations

- Unpack.
- Connect to your TV signal, other AV devices, and the Internet, and turn on the Base Station.
- Turn on the Monitor.

STEP 2

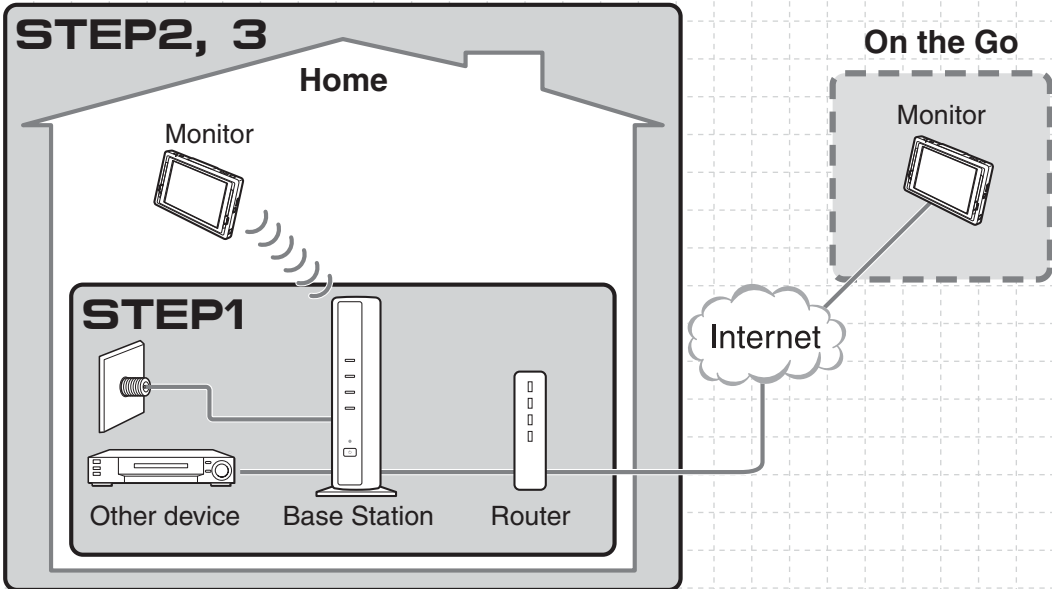
Setup to Watch TV at Home (see the other side)

- Set up for use at home with "Easy Setup (Basic)".

STEP 3

Setup to Watch TV On the Go (see the other side)

- Set up for watching TV away from home with "Easy Setup (NetAV)".



STEP 1 Preparations

Unpack

Check that your package includes the following:

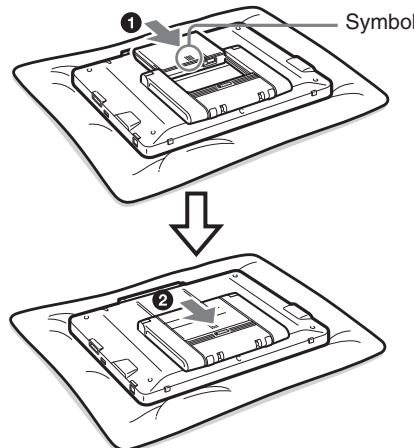
- Base Station with stand (LF-X11)
- Monitor (LF-X11M)
- LocationFree™ Player software CD-ROM (includes LocationFree™ Player software* and Operating Instructions) (LFA-PC2)
- AC power adapter (AC-LX1B) for the Base Station
- AC power adapter (AC-LX1M) for the Monitor
- Power cord (2)
- Battery
- Stylus
- IR Blaster
- Operating Instructions
- Quick Start Guide (this document)
- Instructional DVD
- Important software notice
- Dynamic DNS Terms-of-Use Agreement
- Warranty card

* One serial key for LocationFree™ Player is supplied.

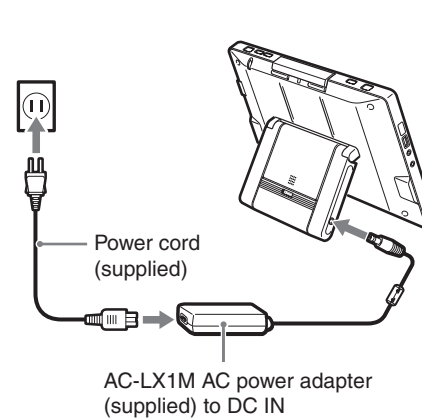
Turn On the Monitor

Inserting the battery

- 1 Place the Monitor on a soft cloth with the LCD screen down.
- 2 From the top of the compartment
 - 1, slide the battery in as far as it will go
 2. Keep the Monitor stand closed when inserting the battery.

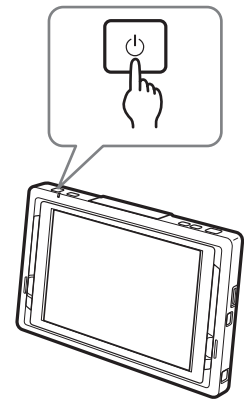


Connecting the power cord to the Monitor



Turning on the power

Press POWER on the top of the Monitor to turn it on.



The "Welcome" screen automatically appears when the Monitor is turned on.

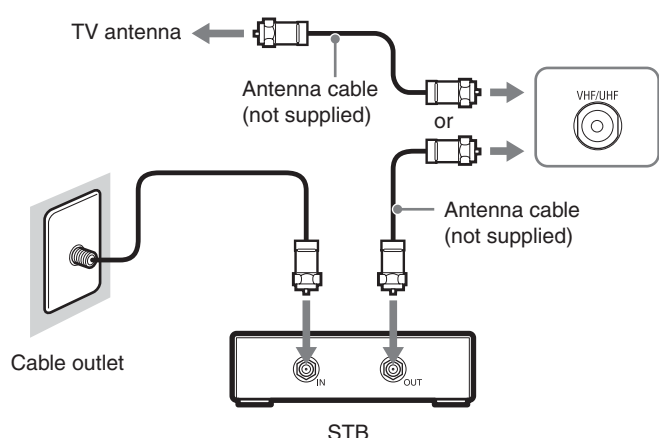
Move on to STEP 2.

Connect to Your TV Signal, Other AV Devices and the Internet, and Turn On the Base Station.

- 1 Connect to a TV antenna, set top box (STB), or other devices.

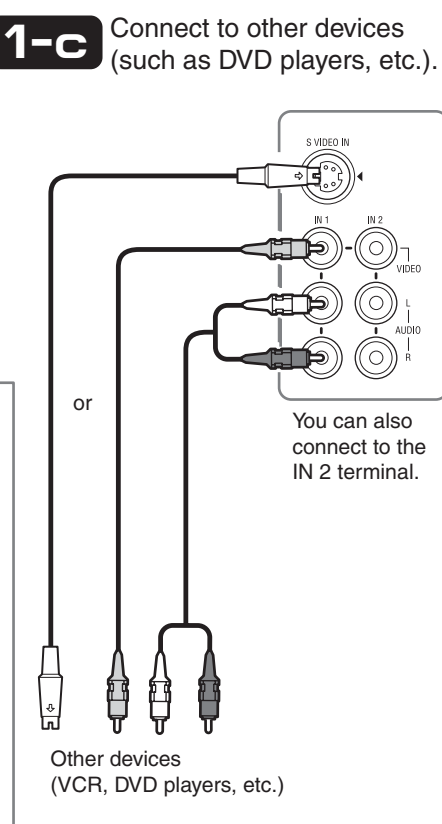
1-a Connect to a TV antenna.

1-b Connect to a set top box (STB).



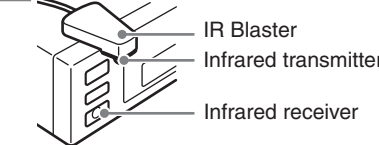
Note
 When an STB is connected with an antenna cable, remote control settings for the STB cannot be configured with Easy Setup. In this case, perform these settings from the [Settings] window. For details, refer to "Configuring the On-Screen Remote for External Tuners on TV" in the operating instructions.

1-c Connect to other devices (such as DVD players, etc.).



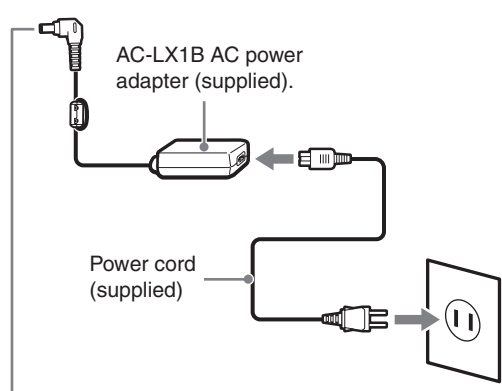
Base Station rear panel

- 2 Connect the IR Blaster so it faces the infrared receiver on the other devices.

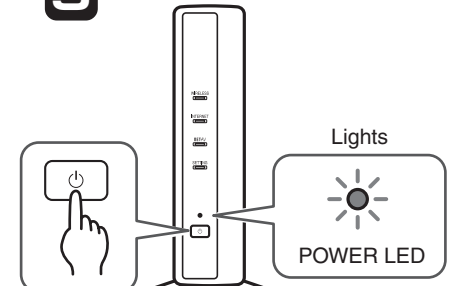


- 3 Connect the LAN cable (not supplied) to the Base Station.

- 4 Connect the power cord to the Base Station.



- 5 Turn on the power.

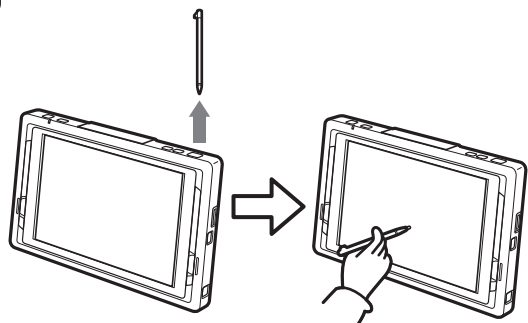


STEP 2

Setup to Watch TV at Home

In "Easy Setup (Basic)", follow the instructions on the screen and make the following settings.

- 1 Remove the stylus from its compartment.



Note

Make sure that the following icon appears in the upper right corner of the screen.



- 2 Select [Go] on the "Welcome" screen.



Note

The "Welcome" screen only appears when starting up for the first time. For details on starting "Easy Setup" again after the first time, see "Start 'Easy Setup' Manually" below.

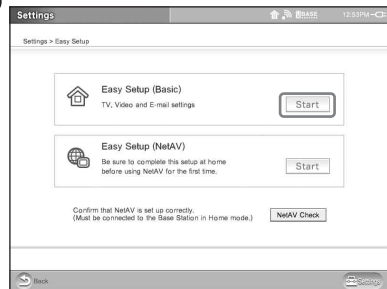
Start "Easy Setup" Manually

When the "Welcome" screen does not appear, perform the following steps to start "Easy Setup".

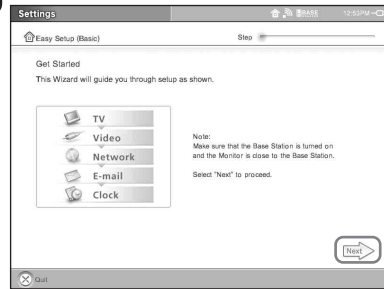
- 1 Touch anywhere on the screen and select [Settings] at the bottom right of the screen.
- 2 Display the [Settings] window, and then select [Easy Setup].



- 3 Select the [Start] button of [Easy Setup (Basic)].

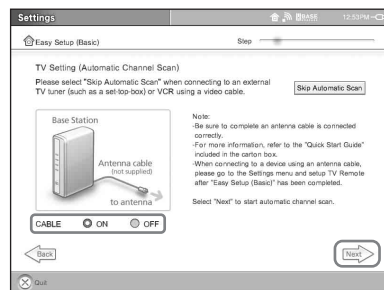


- 3 Select [Next].



- 4 Check that the antenna cable is connected to the Base Station, select [ON] or [OFF] for [CABLE], and then select [Next].

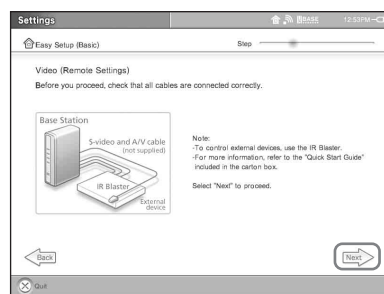
If an external TV tuner or STB is connected with an AV cable, select [Skip Automatic Scan] and proceed to step 7.



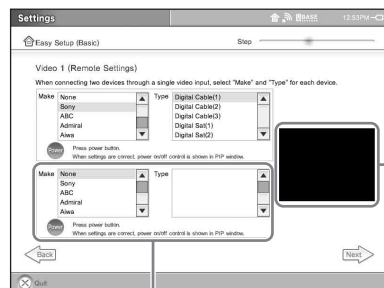
- 5 When a message appears, select [OK]. Automatic Channel Scan begins.

- 6 When the channel scan finishes and a message appears, select [OK].

- 7 Check the other device connections and IR Blaster connections, and then select [Next].



- 8 From the list in the upper (and lower) part of the window, select the [Make] and [Type] of the connected device, and then select [Next].



If you select the correct [Make] and [Type], the connected device is turned on or off each time you press [Power]. You can confirm if the power is on or off by looking at the sub-screen.

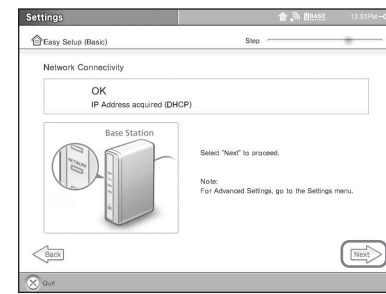
When you connect a second device via a first device, continue selecting the [Make] and [Type] of the second device from the list in the lower part of the window.

- 9 If you connect a device to the Video 2 input terminal, make the same settings as in step 8, and then select [Next].

Tip

The preceding settings are required for watching TV and video at home. From step 10 onward, the necessary settings for Internet and E-mail are configured. If you do not need to make Internet and E-mail settings, you can skip them by selecting [Next].

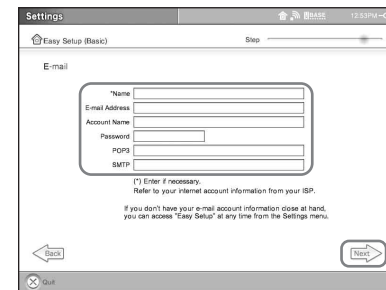
- 10 Confirm that "OK" is displayed on the screen, and select [Next].



Note

Network settings can also be configured from the [Settings] window.

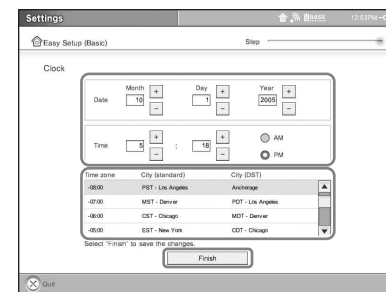
- 11 Refer to your ISP, make the E-mail settings, and then select [Next].



Note

Touching any character entry field will cause the on-screen keyboard to appear.

- 12 Select the time zone for the area where you will use the LocationFree TV, set the current date and time with [+] and [-], and then select [Finish].



Note

Daylight Savings Time is not set automatically when you select [City (standard)] for the time zone, even if the city is in Daylight Savings Time. If you want to set Daylight Savings Time, select [City (DST)].

- 13 Select [OK]. This completes the "Easy Setup (Basic)". The TV window appears.

Note

The system restarts automatically after [Finish] is selected if the time zone is changed.

Move on to STEP 3 to watch TV away from home.

STEP 3

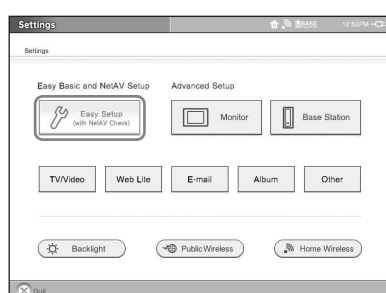
Setup to Watch TV On the Go

To use the NetAV function away from home, you need to make the following settings before leaving home.

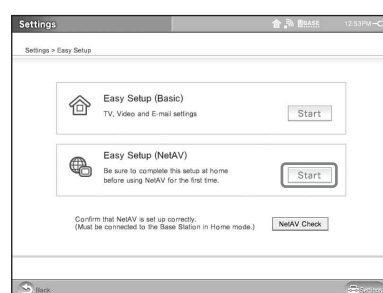
Before making the settings

- After completing the setup in STEP 2, make sure that you are able to watch TV at home and connect to the Internet.
- Turn on the UPnP function of the router you are using.

- 1 Touch anywhere on the screen and select [Settings] at the bottom right of the screen, and then select [Easy Setup].



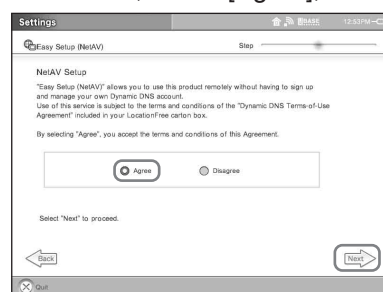
- 2 Select the [Start] button of [Easy Setup (NetAV)].



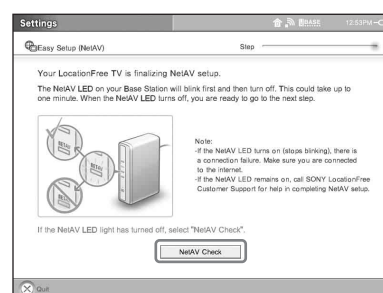
The "Get Started" window appears.

- 3 Select [Next].

- 4 Read the "Dynamic DNS Terms-of-Use Agreement" included in the LocationFree TV carton box, select [Agree], and then select [Next].



- 5 Confirm that the NETAV LED on the Base Station turned off, and select [NetAV Check].



The "NetAV Check" web page opens. If the result is "Success", the setup is complete. If the NetAV Check fails, follow the instructions on the screen.

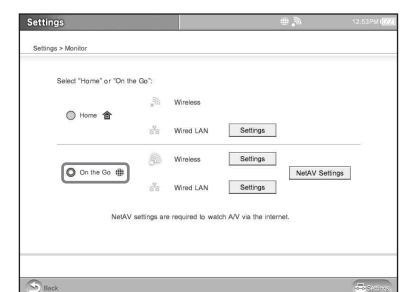
Note

It takes approximately one minute for the NETAV LED to turn off.

To use NetAV

Switch the Monitor to "On the Go" mode, and connect to the Internet.

- 1 Touch anywhere on the screen and select [Settings] at the bottom right of the screen.
- 2 Display the [Settings] window, and then select [Monitor].
- 3 Select [On the Go], and then select [Back] twice.



- 4 Connect the Monitor to the Internet according to your operating environment.

For details, refer to the operating instructions and Instructional DVD.