

*Frigidaire*

Factory Parts Catalog

Product No.	GLEH1642DS0
Market	North America
Color	white
Volts	240
Wiring Diagram (Dryr)	134392800
Wiring Diagram (Wshr)	134422900
Owner's Guide	134396500
Installation Instructions	134395100
Operating Instructions	134396400
Operating Instructions	134396300
Energy Guide	134390900

 **Electrolux**

ELECTROLUX HOME PRODUCTS, INC.  
P.O. Box 212378, Augusta, GA 30917

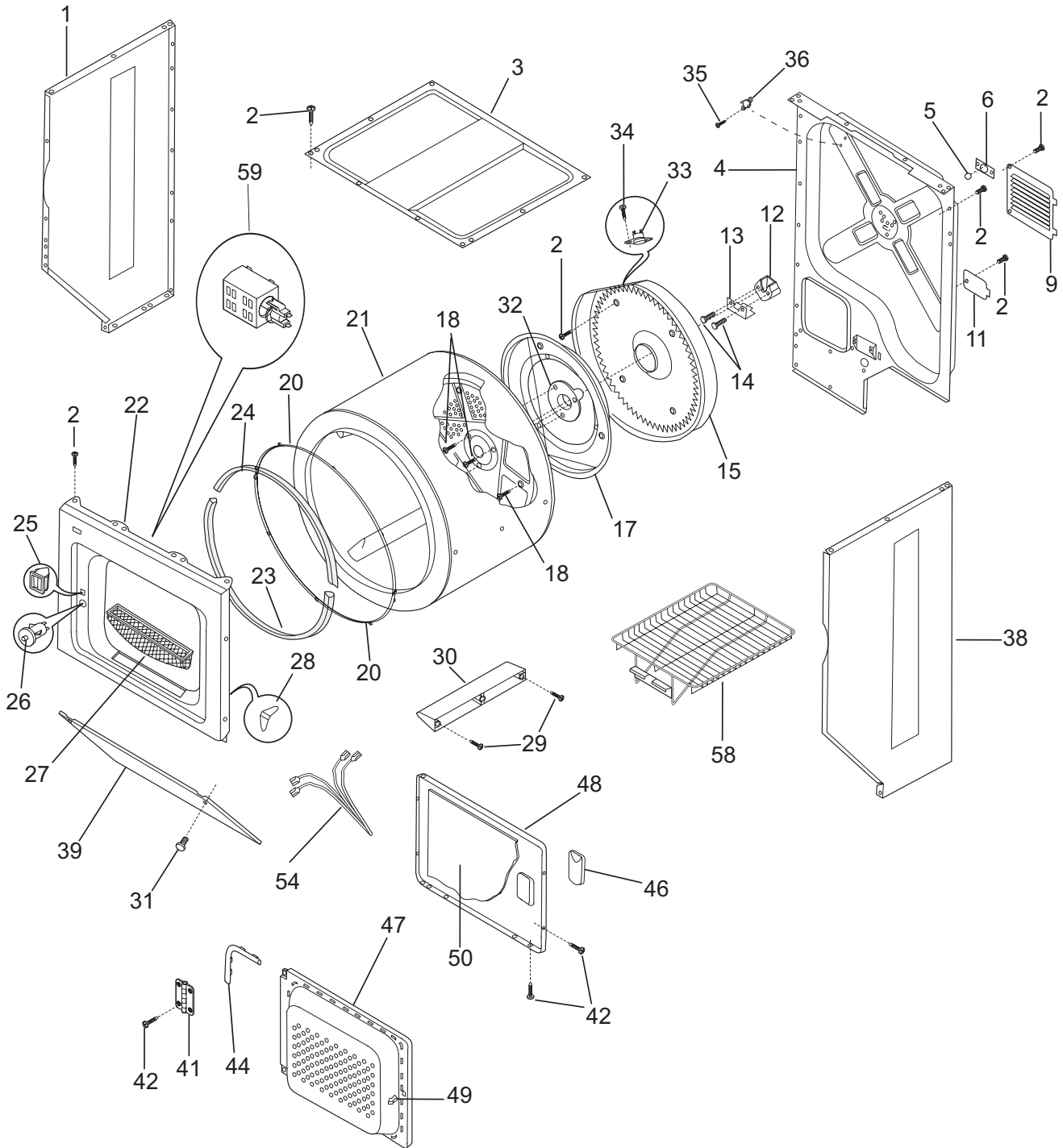
Publication No.  
**5995410585**  
04/06/02  
(EN/SERVICE/KC)  
361

**FRONT-LOAD  
LAUNDRY CENTER  
WITH ELECTRIC  
DRYER**

Model No.  
**GLEH1642D**

Copyright © 2004 Electrolux Home Products, Inc.  
All rights reserved.

UPPER CABINET/DRUM HEATER



P17U0041

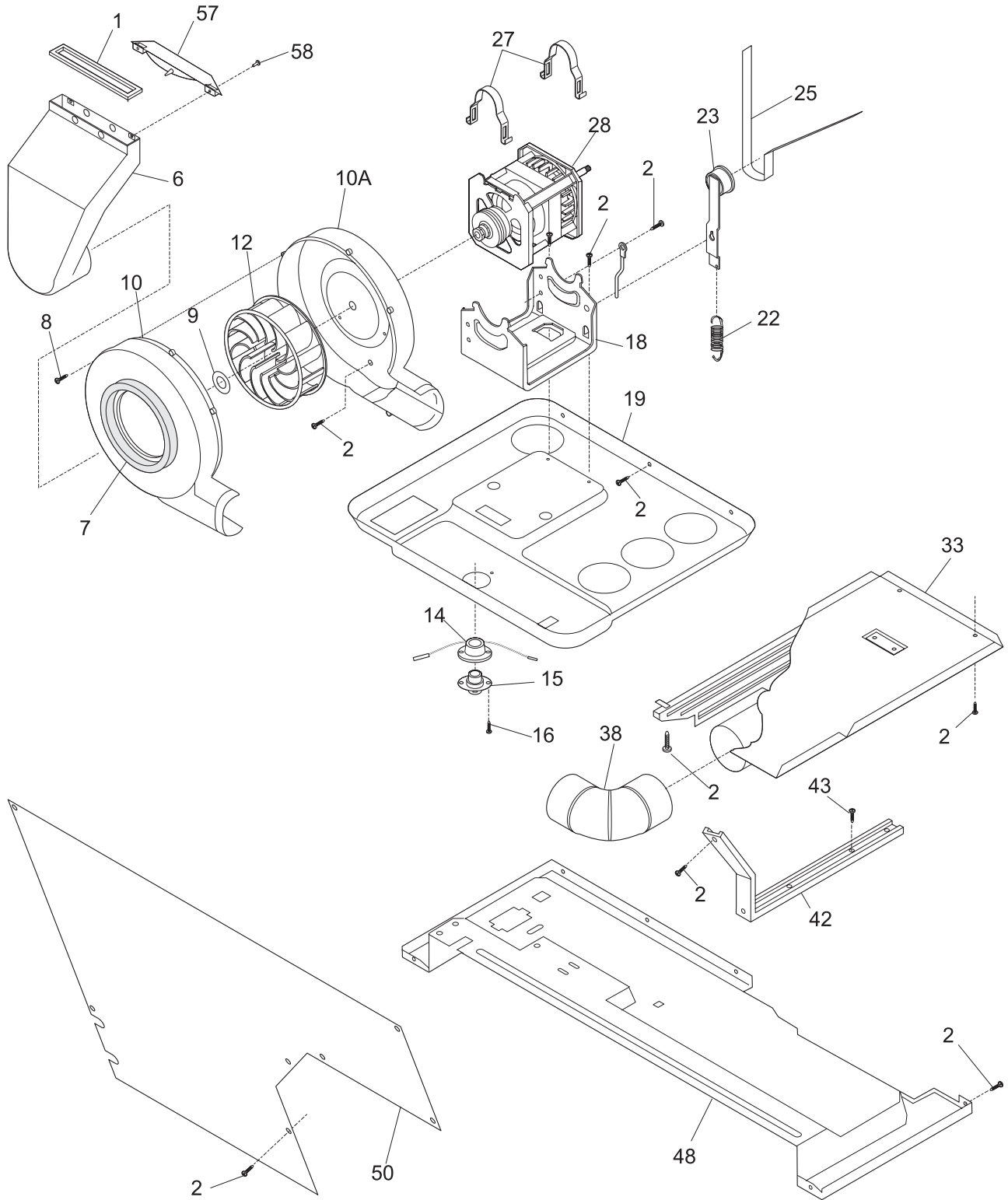
---

**UPPER CABINET/DRUM HEATER**


---

POS. NO	PART NO.	DESCRIPTION
1	131084710	Panel, white, left side
2	131168200	Screw, pan head, 8-18B x 0.31
3	131883301	Panel, top
4	131752302	Panel, rear, steel, galvanized
5	5303281019	Ball
6	5303281020	Clip, ball, steel, flat nut
9	3204249	Panel, motor access, rear
11	3204250	Cover, terminal block
12	131825900	Bearing, drum support
13	131724300	Bracket, bearing support
14	131205400	Screw, bracket mtg., 10-16B x 1.375, cr/sq drive
15 #	131475300	Heater Assy, w/housing
17	3204254	Baffle, heater shield
18	131477000	Screw, 10-16AB x 0.375
20	131963900	Glide, drum
21	134122552	Drum, dryer, stainless steel, service kit
22	131636280	Panel, front, white, with lamp hole
23	134134700	Seal, felt, lower
24	134036400	Seal, felt, upper
25	131658800	Door Catch
26 #	131843101	Switch, door, with drum light
27	131359600	Lint Trap
28	5303281074	Clip, guide, (3)
29	131382300	Screw, quadrex head, 10-14 x 1.00, vane mtg., special
30	5304405283	Vane, straight, gray
31	131202300	Screw, pph, 10-16AB x 0.625
32	131777700	Shaft, drum support, ballhitch
33 #	3204267	Thermostat, safety
34	131243800	Screw, pan hd locking, 8-32CA x 0.375, cup point
35	131892100	Screw, 6-20B x 0.230
36 #	134120900	Thermal Limiter
38	131084810	Panel, white, right side
39	131084402	Panel, access, white, front
41	134222900	Hinge, dryer door
42	131209600	Screw, flat head, 8-18AB x 0.44, cr/sq drive
44	131129900	Gasket, door seal
46	131789400	Handle, door, white
47	134406203	Panel, inner door, white
48	131789303	Panel, outer door, white
49	5303211430	Door Strike
50	3204286	Insulator, heat shield, outer door
54 #	134403200	Wiring Harness, door switch, with light
*	3281126	Clip, wiring
58	134121600	Rack, drying
59 #	131843500	Lamp Assy, drum light, w/mtg bracket

MOTOR/BLOWER/BELT

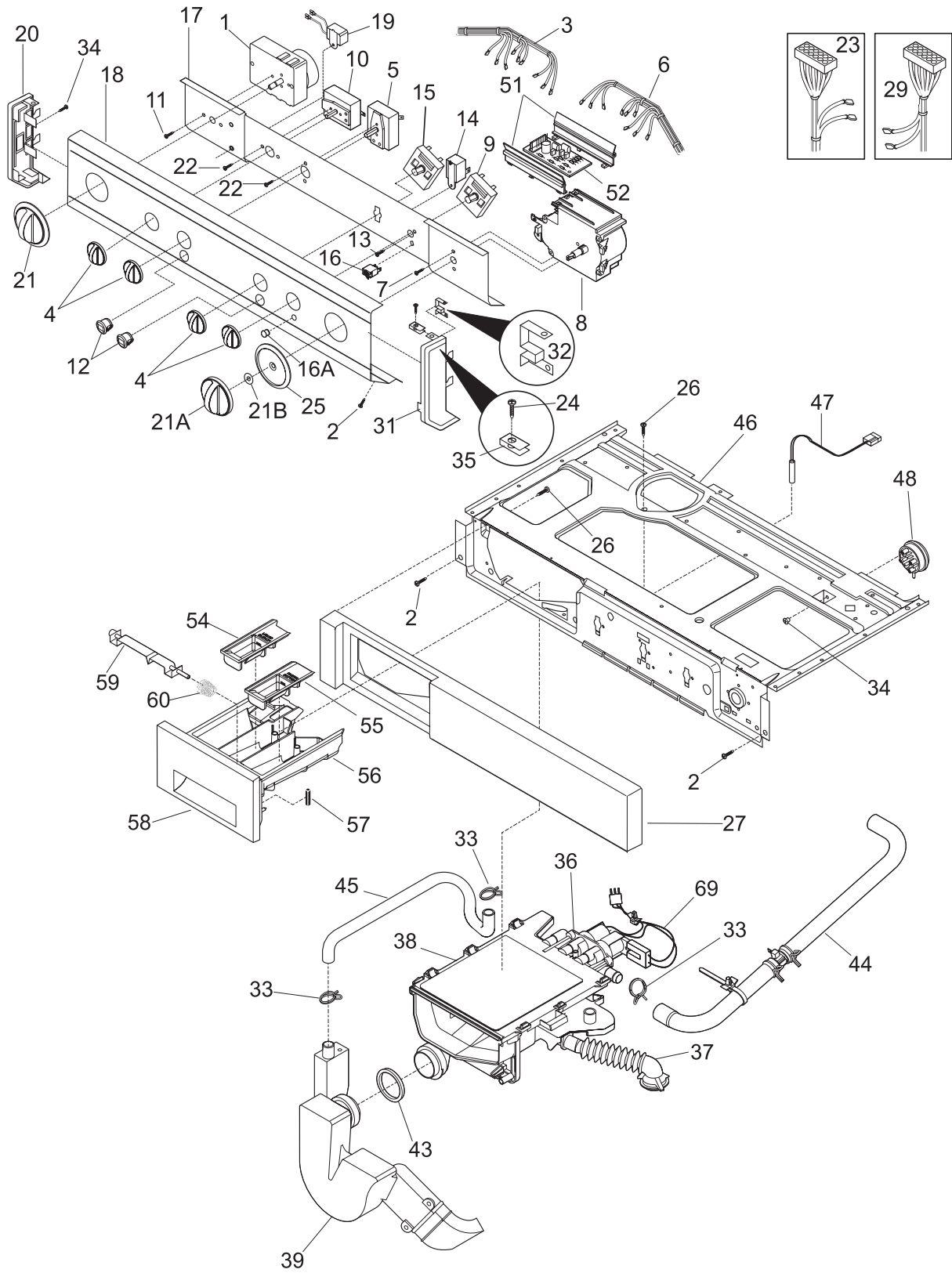


P17B0042

**MOTOR/BLOWER/BELT**

POS. NO	PART NO.	DESCRIPTION
1	131295200	Seal, air duct
2	131168200	Screw, pan head, 8-18B x 0.31
6	134086300	Duct, air
7	3204490	Seal, blower housing, to air duct
8	3205245	Screw, pan head, 6-18AB x 0.60
9	5303304824	Clamp
10	131784500	Housing, blower, front, with seal
10A	134145100	Housing, blower, rear
12	131476300	Blower Wheel
14 #	131658102	Thermostat, heater
15 #	3204307	Thermostat, control
16	131311900	Screw, quadrex ph, 8-18AB x 0.500
18	131413600	Cradle, motor mount, with idler stud
19	131363901	Panel, motor cradle mt
19*	131453000	Bushing, snap-in
22	3205241	Spring, idler
23	131863100	Idler Arm Assy, with pulley
25 #	134163500	Belt, dryer drive
27	134242400	Clamp, motor mtg.
28 #	134196600	Motor, dryer drive, with pulley
33	131731400	Shield, access area, cover
38	3204320	Elbow, exhaust duct
42	5304439185	Bracket, marriage, interior
43	134305100	Screw, hex washer head, 1/4-20 x 1.000, special
48	131731310	Panel, dryer, bottom rear
50	3204329	Cover, safety, lower front
57	131729300	Cover, moisture sensor
58	131477000	Screw, 10-16AB x 0.375

### CONTROL PANEL



P17C0079

## CONTROL PANEL

---

POS. NO	PART NO.	DESCRIPTION
1 #	131960800	Timer, dryer, 4 off
2	131168200	Screw, pan head, 8-18B x 0.31
3 #	134136700	Wiring Harness, dryer control
4	131873401	Knob, rotary, white
5 #	131790900	Switch, dryer temp, 4 position
6 #	134392000	Wiring Harness, washer control
7	131243800	Screw, pan hd locking, 8-32CA x 0.375, cup point
8 #	134389700	Timer, washer
9 #	134045300	Switch, rotary, 2 position
10 #	131447500	Switch, start, turn type
11	5303283289	Screw, cr pan head, 8-32 x 0.250, thread forming
12 #	134040800	Switch, on/off, white, round
13	131311700	Screw, pan head quad, 8-32 x 0.15
14 #	131724500	Buzzer
15 #	134263700	Switch, water temp, 4 posn rotary
16 #	131724700	Light, status
16A	131724800	Lens, pilot light
17	134263400	Bracket, control mount
18	134321500	Panel, trimplate, console front
19 #	5303286537	Buzzer
20	131288101	End Cap, white, LH
21	131873301	Knob, dryer timer, white
21A	131167601	Knob, washer timer, white
21B	5308015493	Spacer, timer shaft
22	3161259	Screw, switch mtg, 6-32 x 0.19, (2), sems
23 #	134264400	Wiring Harness, main
24	131209600	Screw, flat head, 8-18AB x 0.44, cr/sq drive
25	131167701	Indicator, timer pointer, white/blue, washer
26	131823400	Screw, 8-18 x 2.00
27	131870600	Panel, disp drawer mt.
29 #	134263900	Wiring Harness, washer, lower
29*	5303161300	Strap, plastic
31	131288211	End Cap, white, RH
32	3204357	Clip, grounding
33	131306216	Clamp
34	131243700	Screw, pan head, 8-18AB x 0.375, cr/sq drive
35	5308014350	Clip, end cap mtg, U-type
36 #	131974700	Valve, dispenser, w/seal
37	131271600	Hose, tub
38	134266700	Dispenser Assy, housing, w/cover, valves
39	131863300	Siphon
39*	131307900	Clamp, siphon/bellows
43	131749200	Gasket, seal
44	131786000	Hose, dispenser
45	131786100	Hose, dispenser
46	134191412	Panel, control mtg., wing bend
*	131931201	Dampener, vibration, 3.5 x 2 x 2 in., foam
47 #	131505901	Switch, reed
48 #	131998300	Switch, pressure, water optimizer
51	134300700	Bracket, pc board mtg., (2)
52 #	134216300	Control Board, moisture sensor
54	131272100	Cover, bleach
55	131272000	Cover, softener
56	131271910	Drawer, dispenser
57	131373800	Magnet
58	131729500	Handle, disp drawer, with trim
59	131714900	Latch, drawer handle, white
60	131427500	Spring
69 #	131907500	Wiring Harness, dispenser valve



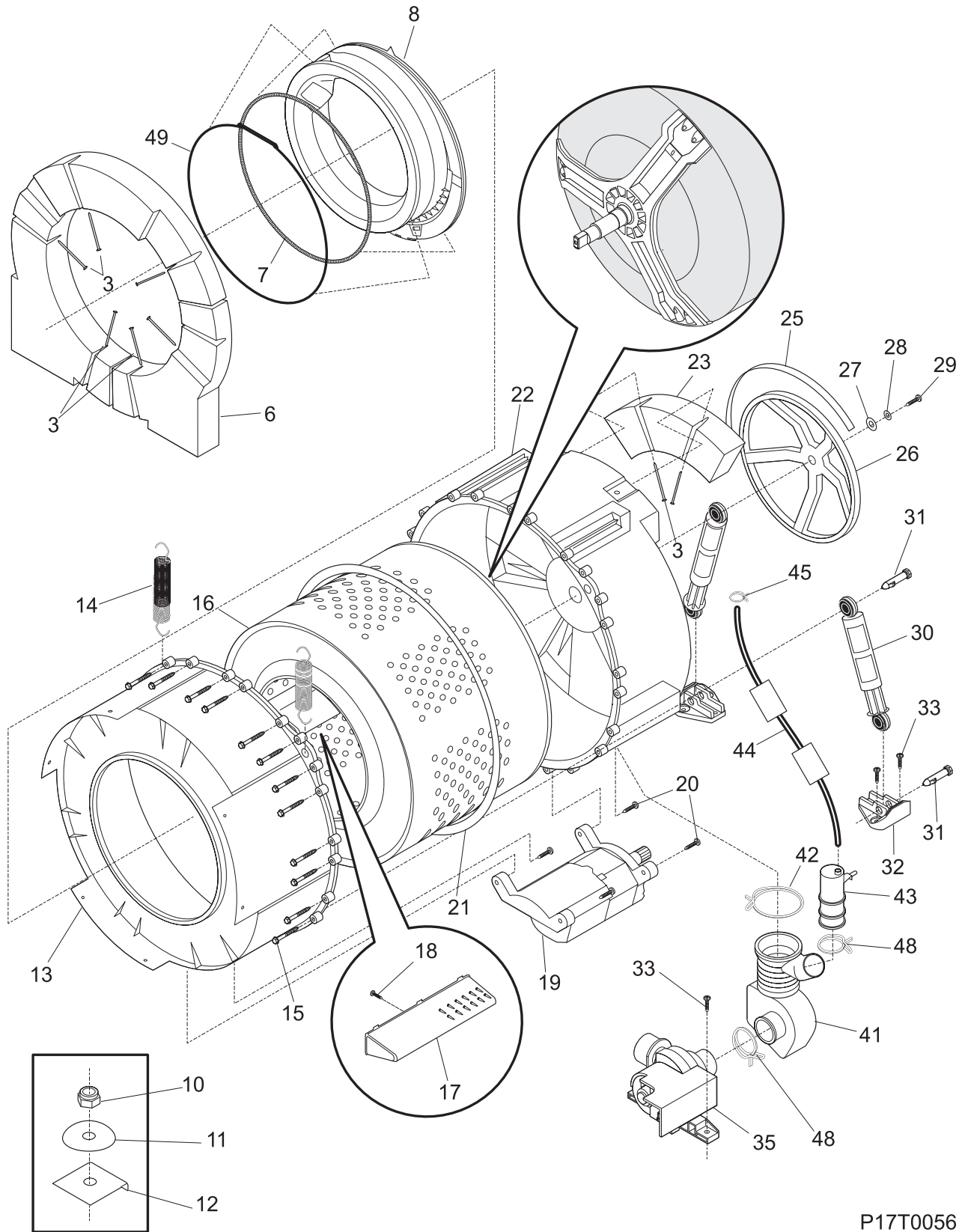
---

**LOWER CABINET/TOP**


---

POS. NO	PART NO.	DESCRIPTION
1	131454201	Hose, water inlet, 6 ft., hose & washer
*	5303161296	Washer, inlet hose
2	131168200	Screw, pan head, 8-18B x 0.31
4 #	134149200	Controller Assy, speed, w/base & shield
7	131205300	Screw, 10-16 x 0.750
8 #	131763200	Door Lock/Switch Assy
9	131303300	Screw, pan head, 10-16AB x 0.500, locking
10	134224600	Frame, outer door
11	131278800	Panel, door glass
12	134195900	Frame, inner door
13	134227100	Screw, flat head, 10-16 x 0.600, quadrex
14	131763310	Striker, door/lock/sw
15	134202200	Hinge, door
16	131696300	Screw, quad pan head, 10-16 x 0.312
17	131346400	Pin, panel locator, side
18	131279300	Panel, Service, white, kick plate
19	131358400	Screw, hex washer hd, 8-18AB x 1.125
20	131460900	Bracket, top panel mtg., front
21	131243700	Screw, pan head, 8-18AB x 0.375, cr/sq drive
22	131279500	Retainer, spring steel
24	134086862	Panel, white, top
25	134381910	Trim, filler, white, RS-top panel
25	134381900	Trim, filler, white, LS-top panel
26	131311900	Screw, quadrex ph, 8-18AB x 0.500
27	134193300	Bracket, hinge support
28	131978500	Panel, back
29	131752030	Panel, cabinet front, white
30	131859600	Shield, overflow
33 #	131389300	Valve, water, 115 V
35	131732903	Bracket, reinforcement, top rear
36	131841600	Leveling Leg Assy, bolt, pad & nut
37	131304200	Roller Assy
39	134178900	Screw, Quad, 8-18AB x 0.455
44	131707800	Ring, drain hose
45	134049200	Hose, drain
58	131800410	Noise Absorber
58A	131744202	Damper, vibration
70	134048600	Shield, drip protector
74	134301300	Spacer, dryer mtg, RS
74	134301310	Spacer, dryer mtg, LS
75	134301400	Brace, side, (2)
76	134390701	Panel, side, white, RS/LS, (2)
77	131458220	Base Plate
*	5303937142	Shipping Brace Kit

MOTOR/TUB



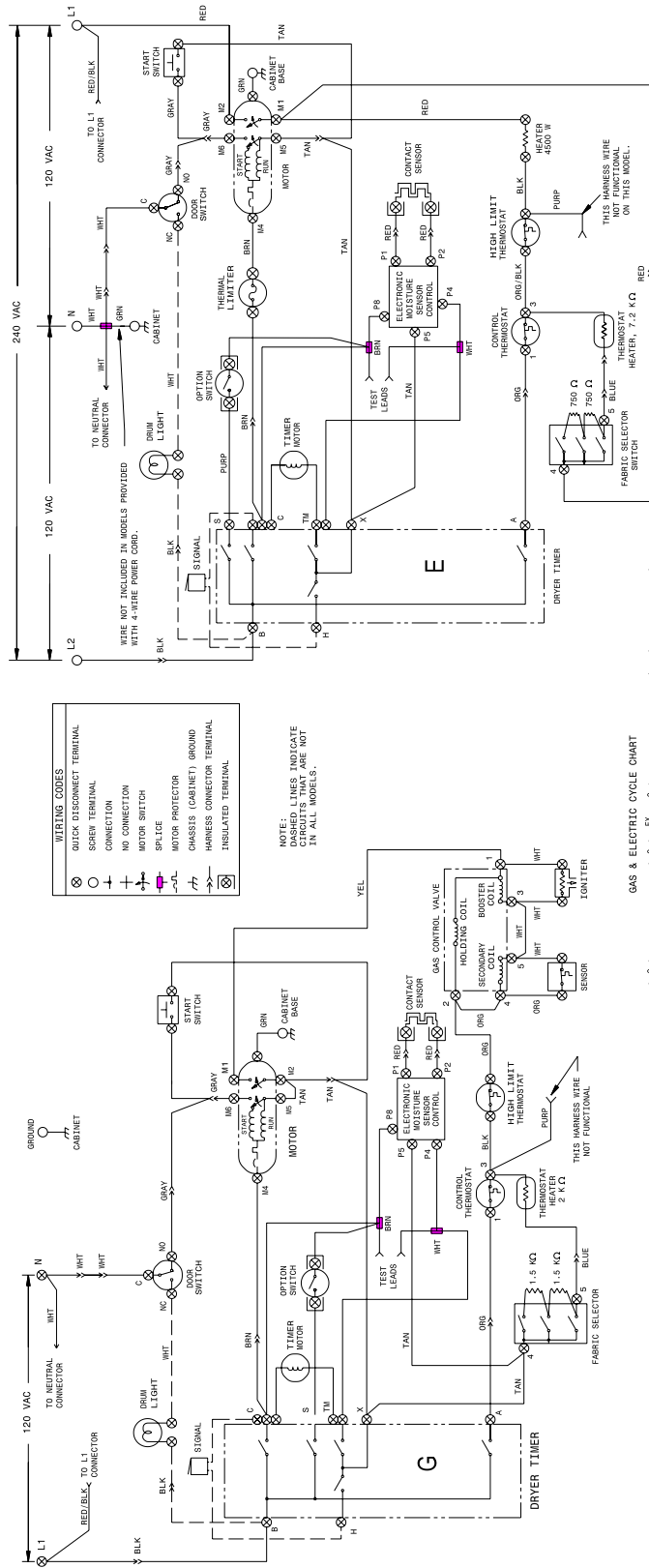
P17T0056

**MOTOR/TUB**

POS. NO	PART NO.	DESCRIPTION
3	131793302	Bolt, carriage, 1/4-20 x 4.00
6	131975300	Counterweight, one piece
7	131277300	Spring, boot retainer
8	134177600	Bellows, door boot
10	131304700	Nut, hex, 1/4-20 UNC-2B
11	131276900	Washer, Bellville, spring steel
12	131793500	Plate, counterweight
13	131618600	Shell, outer tub, front
14	134144700	Spring Assy, suspension, w/sleeves
14*	131592200	Sleeve, protector, upr spring hook
14*	131560000	Sleeve, protector, lwr spring hook
15	131303900	Screw, hex washer head, 1/4-10A x 2.165
16	131618500	Drum Assy, spin basket
17	131274600	Vane
18	131302800	Screw, vane mtg., 10-16AB x 0.375
19 #	131770600	Motor
20	131303500	Screw, hex washer head, 12-14AB x 1.50, motor mtg.
21	134146100	O-ring, tub
22	131462800	Shell, outer tub, rear, with bearing
23	134125900	Counterweight, drum rear
25	134051000	Belt, drive-V, 6-rib
26	131883400	Pulley, drive, large, drum rear, reinforced
27	131304400	Washer, 0.41 x 1.50, 0.12 thick
28	131304500	Washer, lock, 3/8
29	131303700	Screw, pulley mtg., m10 x 0.92, metric
30	131268200	Shock Absorber, air, stabilizer
31	131268300	Pin, shock mtg.
32	131268100	Bracket, shock mtg.
33	134160900	Screw, quadrex, 10-16AB X 0.750
35	134051100	Pump, drain
41	134044200	Coin Trap
42	131333101	Clamp
43	131277500	Chamber, air
44	131277600	Hose, air pressure
45	131306202	Clamp, pressure hose
48	131306234	Clamp, pump to trap
49	134266500	Clamp, bellows/boot, 0.059 OD wire, spring held
*	134390900	Energy Guide

WIRING DIAGRAM

CAUTION: DISCONNECT ELECTRIC CURRENT BEFORE SERVICING. LABEL ALL WIRES PRIOR TO DISCONNECTION WHEN SERVICING CONTROLS. WIRING ERRORS CAN CAUSE IMPROPER AND DANGEROUS OPERATION. VERIFY PROPER OPERATION AFTER SERVICING.



**WIRING CODES**

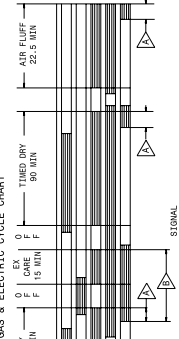
- QUICK DISCONNECT TERMINAL
- ⊕ SCREW TERMINAL
- NO CONNECTION
- ⊕ MOTOR SWITCH
- ⊕ MOTOR PROTECTOR
- ⊕ CHASSIS (CABINET) GROUND
- ⊕ SPICE
- ⊕ HARNESS CONNECTOR TERMINAL
- ⊕ INSULATED TERMINAL

NOTE: DASHED LINES INDICATE CIRCUITS THAT ARE NOT IN ALL MODELS.

**FABRIC SELECTOR SWITCH-ELEC MODELS**

POSITION	FUNCTION	RESISTANCE (4-5)
1	HIGH	OPEN CIRCUIT
2	MEDIUM	1.5K ±5%
3	MEDIUM/LOW	750 ±5%
4	LOW	TO BOX

- NOTES-ELEC MODELS**
- ALL WIRING MUST CONFORM TO LOCAL ELECTRICAL CODES.
  - CONNECT DRIVER TO 30 AMP INDIVIDUAL BRANCH CIRCUIT.
  - DRYER TIMER SHOWN IN OFF POSITION. IF TIMER IS IN ON POSITION, THE DRYER MOTOR, HEATER, AND FABRIC SELECTOR SWITCH AT HIGH HEAT.



- THE BAR CHART ABOVE REPRESENTS ONE COMPLETE REVOLUTION OF TIMER SHAFT.**
- △ SHARED PORTION OF BAR CHART INDICATES THE PROPORTIONAL TIMES THAT INTERNAL TIMER CONTACTS ARE CLOSED.
  - △ CIRCUIT "X-H" WILL CLOSE FOR 5 SEC. 13 SEC. 5 TO 7 TIMES IN THIS AREA. THE CLOSURES WILL BE 5 MINUTES APART.
  - △ CIRCUIT "X-H" WILL CLOSE FOR 5 SEC. 13 SEC. 1 TO 2 TIMES IN THIS AREA. WHEN 2 CLOSURES OCCUR IN THIS AREA, THE CLOSURES WILL BE 5 MINUTES APART.

**FABRIC SELECTOR SWITCH-GAS MODELS**

POSITION	FUNCTION	RESISTANCE Ω
1	HIGH	OPEN CIRCUIT
2	MEDIUM	3K ±5%
3	MEDIUM/LOW	1.5K ±5%
4	LOW	TO BOX

- NOTES-GAS MODELS**
- ALL WIRING MUST CONFORM TO LOCAL ELECTRICAL CODES.
  - CONNECT DRIVER TO 15 AMP INDIVIDUAL BRANCH CIRCUIT.
  - DRYER TIMER SHOWN IN OFF POSITION. IF TIMER IS IN ON POSITION, THE DRYER MOTOR, HEATER, AND FABRIC SELECTOR SWITCH AT HIGH HEAT.

WIRING DIAGRAM  
PART NO. 134392800 A

