

## N) Decalcifying **DESCALE MACHINE / MACHINE READY**

For different water hardness levels see Operating Instructions. If a water hardness level is selected, the decalcifying monitor is active. **Decalcify when above message appears.**

**Important:** If you use the Clearyl Filter and the above message appears, then the Clearyl Installation procedure was not performed properly.

**Important:** The decalcifying program must not be interrupted.

- Use only the special decalcifying tablets (not the cleaning tablets!). For decalc tablet supply see next page.

1. Push the **RINSE** button; the display shows **EMPTY DRAWER**.
2. Remove and empty drawer. You must remove the drawer for 20 seconds, even if it is empty. Replace complete drawer.

### Decalcifying Session:

3. **SOLVENT IN TANK.** Dissolve two large square tablets in 16 oz. of water, remove tank and pour mixture into empty water tank and replace.
4. Place a container (at least 16 oz.) underneath frother. **SOLVENT IN TANK OPEN TAP.** Turn the **SELECTOR** to the water symbol. **DECAL ON.** After a few minutes: **SHUT TAP.** Turn the **SELECTOR** to the cup symbol. **DECAL ON.** After a few minutes **EMPTY DRAWER.**
5. Carefully remove container and drawer, empty and replace.

### Cleaning Session:

6. **FILL WATER.** Rinse water tank and fill with cold water (16 oz.) and replace. Place a container under the frother.
7. **OPEN TAP.** Turn the **SELECTOR** to the water symbol. **DECAL ON.** After a few minutes: **SHUT TAP.** Turn the **SELECTOR** to the cup symbol. **DECAL ON.** After a few minutes **EMPTY DRAWER.** Carefully remove container and drawer, empty and replace.
8. **PRESS RINSE.** Push the **RINSE** button. The machine returns to **READY** and resets itself.

**CAPRESSO CUSTOMER SERVICE** 1-800-767-3554  
M-F 9AM - 9PM; Sat. 9AM - 5PM EST  
FAX: 201-767-9684 contact@capresso.com

## O) Supplies can be ordered through:

Customer Service or Mail Order Form or [www.capresso.com](http://www.capresso.com):

- Clearyl Water Filter Cartridge: #64553
- Special Cleaning Tablets: #62205
- Decalcifying Tablets: #61848
- Grand Aroma Coffee Beans: #921, regular, decaf, espresso

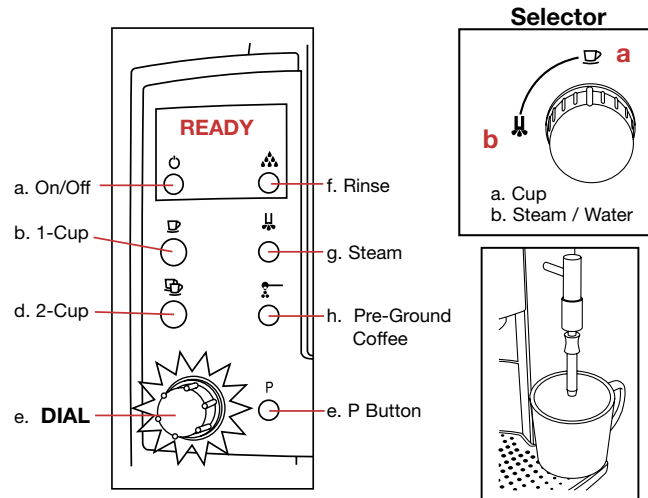
64716

## Impressa E Quick Reference Guide

This Guide does not replace the Operating Instructions. For details and cautions you must read all instructions.

### Traces of Coffee Grounds in New Machine?

This is normal! Grinder was tested during assembly with beans. Despite cleaning, traces of ground coffee may be found.



**RED TEXT** represents information in the display.

### A) First Time Ever Preparation

1. Fill water in tank and beans in bean container.
2. DO NOT install the Water Filter Cartridge now!
3. Push **ON/OFF** button. **OPEN TAP.** Place a cup underneath the frother and turn the **SELECTOR** to the water symbol. **FILLING.** Water pumps through the frother into the cup and stops automatically. **SHUT TAP.** Turn the **SELECTOR** to the Cup Symbol. **SYSTEM FILLING. HEATING. PRESS RINSE.**
4. Place a cup underneath the coffee spout and push the **RINSE** button. **READY.** Place a large cup underneath the coffee spout and press the **1-CUP** button. The machine starts grinding and brews coffee. Discard the first two cups. **READY.**

### B) Daily Preparation

- Fill fresh water in tank and check bean container.
- Push **ON/OFF** button: **HEATING. RINSE.**
- Place a cup under the coffee spouts and press the **RINSE** button. **READY.**

### C) Factory Settings:

Filter:	–	Stats:	
Hardness:	Level 2	Language:	English
Aroma:	ROBUST	ML / OZ:	OZ.
Auto Off:	2 HRS	Rinse:	✓

#### D) Grinding and Brewing

- Push the **DIAL**. Display shows the cup size, e.g. **4.0 OZ.**
- Turn the **DIAL** to change the cup size from **1.0** to **8.0 OZ.**
- Push the **1-CUP** button once: **MILD**, twice **NORMAL**, three times **STRONG**.
- When pushing the **2-CUP** button, the machine will brew twice as much coffee as set with the **1-CUP** button.

#### E) Changing the Grinder Fineness

**Important:** You can only adjust the fineness during the actual grinding process.

- Open the bean container lid and turn the dial while grinding: thicker bars: coarser grind; thinner bars: finer grind.
- For darker, oily beans – grind somewhat coarser. For lighter beans – grind somewhat finer.

#### F) Using Hot Water

- Place a cup underneath the frother. Turn the **SELECTOR** to the water symbol, e.g. **5 OZ.**
- Turn the **DIAL** to select to desired amount of water. **WATER. SHUT TAP.** Turn the **SELECTOR** to the Cup Symbol. You can always stop the hot water flow before the display shows **SHUT TAP.**

#### G) Using Steam (Frothing and Steaming)

**Important:** All frother parts must be tightly connected and clean.

- Cappuccino: One shot espresso plus ~ 4 oz. of steamed and frothed milk. Metal frother sleeve DOWN
- Latte: One shot espresso plus ~ 4 to 5 oz. of steamed milk. Metal frother sleeve UP: steaming only (no frothing)

1. Push the **STEAM** button. **HEATING.** After 5 to 30 sec.: **STEAM READY.**
2. Immerse the frother into a pitcher with milk and turn the **SELECTOR** to the water symbol, e.g. **40 SEC.** Turn the **DIAL** to select to desired steaming time (3 to 120 sec). **STEAM.** Steam pushes into the milk.
3. **SHUT TAP.** Turn the **SELECTOR** to the Cup Symbol. You can always stop the steam output with the **SELECTOR.**
4. Repeat process for additional steam
5. After steaming you can immediately brew coffee.

**Knocking Noise during Frothing:** The pumps dispenses water droplets into the heating system.

**Please note:** Skim and 1% milk will produce more froth than 2% and regular milk.

#### Regulating Milk Temperature

To increase the milk temperature use the steaming position.

#### H) Cleaning the Frother

Should be done immediately after use! Takes approx. 15 sec.!

- Place a cup underneath the frother. Turn the **SELECTOR** for 5 seconds to the cup symbol.

#### J) Programming

Push and hold the **P** button until the display shows **FILTER -.** Turn the **DIAL** to access the other functions: **HARDNESS, AROMA, AUTO OFF, STATS, LANGUAGE, ML/OZ, RINSE ✓.** Select the function, push the **DIAL**, turn **DIAL** to see or select option. Push **DIAL** to confirm. Push **P** button to get back to **READY.** For details see Operating Instructions.

#### K) Installing the Clearyl Water Filter Cartridge.

1. Rinse cartridge under running water. Insert cartridge into water tank reception and close the cartridge holder.
2. Fill tank with cold water. Push and hold the **P** button: **FILTER -.** Push the **DIAL: NO -.** Turn **DIAL: YES ✓.**
3. Push **DIAL. INSERT / OPEN TAP.** Place a container (20 oz.) under the frother. Turn the **SELECTOR** to the water symbol. **FILTER RINSING.**
4. After 90 sec.: **SHUT TAP.** Turn the **SELECTOR** to the cup symbol. **HEATING. READY.**  
The display will automatically remind you when it's time to replace the cartridge. **Please note:** When the filter program is activated, the decalcifying program (HARDNESS) is turned off .

#### L) Replacing the Clearyl Cartridge

When display shows **CHANGE FILTER / MACHINE READY**

- Remove old filter, rinse new filter under running water and insert (see above). Place a large container (20 oz.) under the frother and push the **RINSE** button. The **DIAL** illuminates.
- Turn the **DIAL** until the display shows **FILTER.**
- Push the **DIAL.** the display shows **REPLACE OPEN TAP.**
- Turn the **SELECTOR** to the water symbol. **FILTER RINSING.** See Chapter H,4 above.

**Important:** If message **CHANGE FILTER / MACHINE READY** does not show up after 3 months, you must replace the filter.

#### M) Cleaning with Special Tablet

This cleaning cycle removes coffee oils inside the machine.

This message will appear after 200 cups of coffee: **CLEAN MACHINE / MACHINE READY.** Takes less than 15 minutes!

**Important:** Only use the special white round cleaning tablet!

**Important:** Once started, do not interrupt the program!

1. Fill water tank. Push the **RINSE** button. **EMPTY DRAWER.**  
**Please note:** You must remove the drawer for 20 seconds even if it is empty. Replace complete drawer.
2. **PRESS RINSE.** Push the **RINSE** button. **CLEANING.** After a moment the display shows **ADD TABLET / PRESS RINSE.**
3. Drop one white tablet into the "ground coffee funnel."  
Push the **RINSE** button. **CLEANING.** After a few minutes: **EMPTY DRAWER.** Carefully lift, remove and empty drawer and replace. **READY.** The machine resets itself and reminds you to clean again after the next 200 cups.