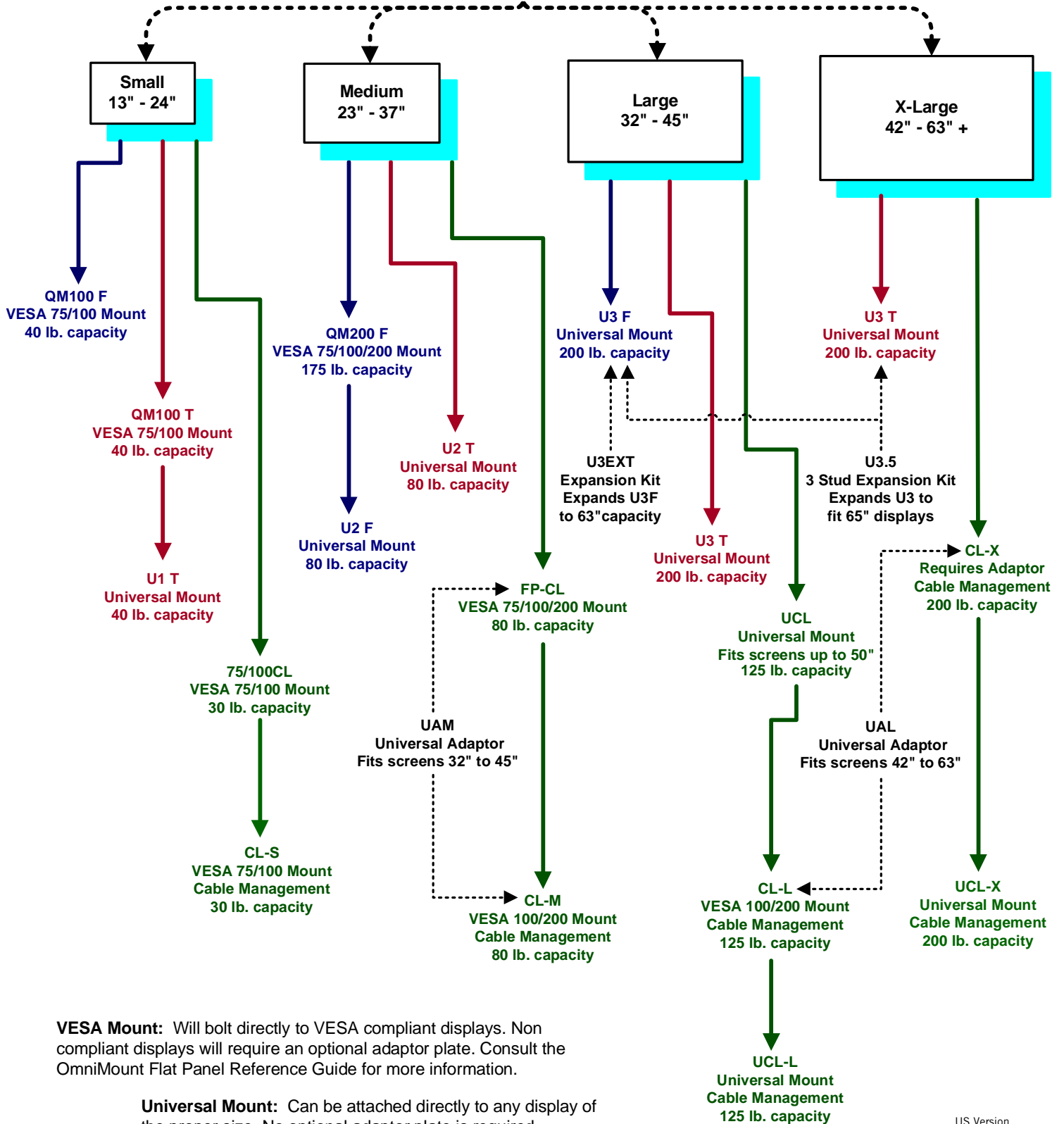




Flat Panel Mount - Quick Reference Guide

Mount Types: Fixed - display mounts flat to wall for lowest profile. Tilt - display can tilt for best viewing angle. Cantilever - display can tilt, swivel, pan, and fold flat to wall.

Screen size of Display



VESA Mount: Will bolt directly to VESA compliant displays. Non compliant displays will require an optional adaptor plate. Consult the OmniMount Flat Panel Reference Guide for more information.

Universal Mount: Can be attached directly to any display of the proper size. No optional adaptor plate is required.



Flat Panel Wall Mount - Features

Small

QM100F

VESA Fixed Mount

- ♦ VESA 75/100 compliant
- ♦ Lift n' Lock mounting
- ♦ .5" mounting depth
- ♦ Accepts security screws
- ♦ 40 lb. capacity

QM100T

VESA Tilt Mount

- ♦ VESA 75/100 compliant
- ♦ Tilt range: +15° to -5°
- ♦ Can be inverted
- ♦ 1.85" mounting depth (flat)
- ♦ 40 lb. capacity

U1T

Universal Tilt Mount

- ♦ Tilt range: +15° to 0°
- ♦ Mounting Template
- ♦ Complete hardware package
- ♦ Lift n' Lock mounting
- ♦ 1.5" mounting depth (flat)
- ♦ 40 lb. capacity

75/100CL

VESA Cantilever Mount

- ♦ VESA 75/100 compliant
- ♦ Single stud mounting
- ♦ Folds flat to wall
- ♦ 1.84" mounting depth (flat)
- ♦ 30 lb. capacity

CL-S

VESA Cantilever Mount

- ♦ Premium Wishbone Cantilever
- ♦ VESA 75/100 compliant
- ♦ Cable management
- ♦ Portrait/landscape viewing
- ♦ Lift n' Lock mounting
- ♦ Folds flat to wall
- ♦ Single stud mounting
- ♦ Installation template
- ♦ 30 lb. capacity

Medium

QM200F

VESA Fixed Mount

- ♦ VESA 75/100/200 compliant
- ♦ Single stud mounting
- ♦ Stud offset mounting
- ♦ Lift n' Lock mounting
- ♦ .77" mounting depth
- ♦ Accepts security screws
- ♦ 175 lb. capacity

U2F

Universal Fixed Mount

- ♦ Single or double stud mounting
- ♦ Installation template
- ♦ Complete hardware package
- ♦ Hardware cross reference chart
- ♦ Modular spacer system
- ♦ Lift n' Lock mounting
- ♦ 1.64" mounting depth
- ♦ Accepts padlock
- ♦ 80 lb. capacity

U2T

Universal Tilt Mount

- ♦ Tilt range: +15° to -5°
- ♦ Tilt tension levers
- ♦ Single or double stud mounting
- ♦ Installation template
- ♦ Complete hardware package
- ♦ Lift n' Lock mounting
- ♦ 2.25" mounting depth (flat)
- ♦ Accepts padlock
- ♦ 80 lb. capacity

FP-CL

VESA Cantilever Mount

- ♦ VESA 75/100/200 compliant
- ♦ Single stud mounting
- ♦ Folds flat to wall
- ♦ 3.5" mounting depth (flat)
- ♦ Accepts UM-1/UAM adaptors
- ♦ Lift n' Lock mounting (with adaptor)
- ♦ 80 lb. capacity

CL-M

VESA Cantilever Mount

- ♦ Premium Wishbone Cantilever
- ♦ VESA 100/200 compliant
- ♦ Cable management
- ♦ Portrait/landscape viewing
- ♦ Lift n' Lock mounting
- ♦ Folds flat to wall
- ♦ Single stud mounting
- ♦ Installation template
- ♦ 80 lb. capacity

UAM

Universal Adaptor - Medium

- ♦ Fully assembled
- ♦ Self-centering design
- ♦ Complete hardware package
- ♦ Hardware cross reference chart
- ♦ Modular spacer system
- ♦ Hardware covers
- ♦ 125 lb. capacity

Large

U3F

Universal Fixed Mount

- ♦ Double stud mounting
- ♦ Masonry mounting
- ♦ Installation template
- ♦ Complete hardware package
- ♦ Lift n' Lock mounting
- ♦ 2.4" mounting depth
- ♦ Accepts padlock
- ♦ 200 lb. capacity

U3T

Universal Tilt Mount

- ♦ Tilt range: +15° to -5°
- ♦ Double stud mounting
- ♦ Masonry mounting
- ♦ Installation template
- ♦ Complete hardware package
- ♦ Hardware cross reference chart
- ♦ Modular spacer system
- ♦ Extension kit
- ♦ Lift n' Lock mounting
- ♦ 2.9" mounting depth
- ♦ Cable cover
- ♦ Accepts padlock
- ♦ 200 lb. capacity

UCL

Universal Cantilever Mount

- ♦ Fits screens up to 50"
- ♦ Folds flat to wall
- ♦ Double stud mounting
- ♦ Complete hardware package
- ♦ Lift n' Lock mounting
- ♦ Hardware cross reference chart
- ♦ Modular spacer system
- ♦ 4.4" mounting depth (flat)
- ♦ 125 lb. capacity

CL-L

VESA Cantilever Mount

- ♦ Premium Wishbone Cantilever
- ♦ VESA 100/200 compliant
- ♦ Cable management
- ♦ Portrait/landscape viewing
- ♦ Lift n' Lock mounting
- ♦ Folds flat to wall
- ♦ Double stud mounting
- ♦ Masonry mounting
- ♦ Installation template
- ♦ 125 lb. capacity

UCL-L

Universal Cantilever Mount

- ♦ Premium Wishbone Cantilever
- ♦ UAM-universal adaptor plate
- ♦ VESA 100/200 compliant
- ♦ Cable management
- ♦ Folds flat to wall
- ♦ Double stud mounting
- ♦ Masonry mounting
- ♦ Installation template
- ♦ Lift n' Lock mounting
- ♦ Complete hardware package
- ♦ Hardware cross reference chart
- ♦ Modular spacer system
- ♦ 125 lb. capacity

X-Large

U3T

Universal Tilt Mount

- ♦ Tilt range: +15° to -5°
- ♦ Double stud mounting
- ♦ Masonry mounting
- ♦ Installation template
- ♦ Complete hardware package
- ♦ Hardware cross reference chart
- ♦ Modular spacer system
- ♦ Extension kit
- ♦ Lift n' Lock mounting
- ♦ 2.9" mounting depth
- ♦ Cable cover
- ♦ Accepts padlock
- ♦ 200 lb. capacity

CL-X

Cantilever Mount

- ♦ Premium Wishbone Cantilever
- ♦ Double arm design
- ♦ Cable management
- ♦ Folds flat to wall
- ♦ Double stud mounting
- ♦ Masonry mounting
- ♦ Installation template
- ♦ Complete hardware package
- ♦ Hardware cross reference chart
- ♦ Modular spacer system
- ♦ Accepts UM-1/UAL adaptors
- ♦ Lift n' Lock mounting (with adaptor)
- ♦ 200 lb. capacity

UCL-X

Universal Cantilever Mount

- ♦ Premium Wishbone Cantilever
- ♦ UAL-universal adaptor plate
- ♦ Double arm design
- ♦ Cable management
- ♦ Folds flat to wall
- ♦ Double stud mounting
- ♦ Masonry mounting
- ♦ Installation template
- ♦ Lift n' Lock mounting
- ♦ Complete hardware package
- ♦ Hardware cross reference chart
- ♦ Modular spacer system
- ♦ 200 lb. capacity

UAL

Universal Adaptor - Large

- ♦ Fully assembled
- ♦ Self-centering design
- ♦ Large/X-large mounting rails
- ♦ Complete hardware package
- ♦ Hardware cross reference chart
- ♦ Modular spacer system
- ♦ Hardware covers
- ♦ 200 lb. capacity