



30" Gas Range

Wolf has perfected the form, function and sheer durability of our stainless steel gas ranges. The Wolf gas range offers a variety of standard features such as an infrared oven broiler, convection baking, dual brass surface burners and our signature large red control knobs.



Model R304 shown with 5" riser. Also shown is Sub-Zero Model 632/O refrigerator/freezer.



Model R304

Features

- Natural or LP gas models
- Classic stainless steel exterior finish
- Distinctive red control knobs with chrome bezels—black knobs optional
- Dual brass burners with automatic reignition at all settings
- Porcelain-coated cast iron top grates
- Large-capacity convection oven with infrared broiler and three adjustable oven racks
- Spring/damper door hinge system
- Stainless steel drip tray
- Adjustable stainless steel legs in front and rear casters
- Full side panels and skirt

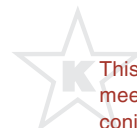
Surface Features

Model	R304
Surface Burners – 16,000 Btu/hr with 500 Btu/hr delivered at simmer	4

Model number is for natural gas range, add (-LP) to the model number for LP gas.

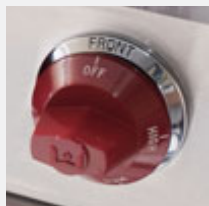
Accessories

- Classic stainless steel risers in 5" and 10" heights, or 20" riser with shelf
- Classic stainless steel island trim
- Black control knobs
- Porcelain-coated, cast iron wok grate
- Porcelain-coated, cast iron two-burner S-grate
- Oven rack
- High altitude conversion kit

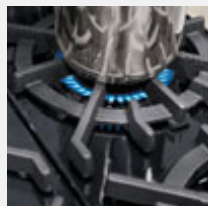


This appliance is certified by Star-K to meet strict religious regulations in conjunction with specific instructions found on www.star-k.org.

Accessories are available through your Wolf dealer. To obtain local dealer information, visit the Showroom Locator section of our website, wolfappliance.com.



Red Control Knobs

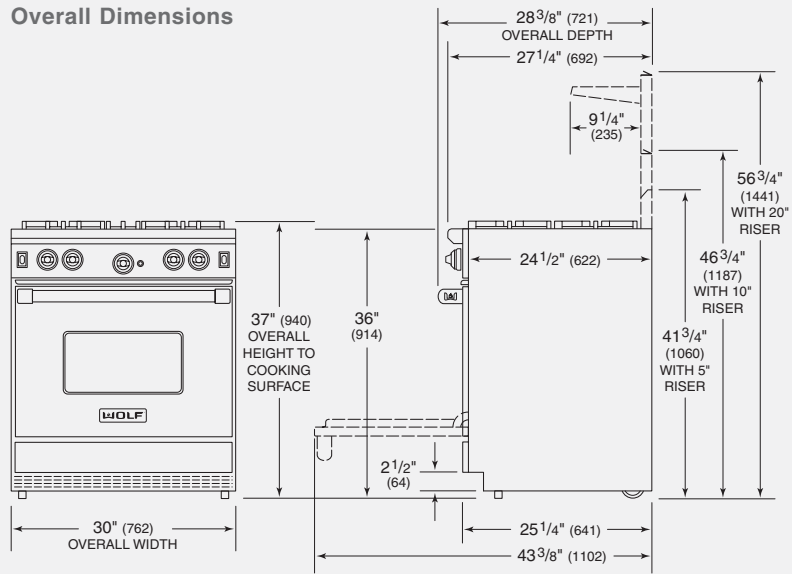


Dual Brass Burner



30" Gas Range

Overall Dimensions



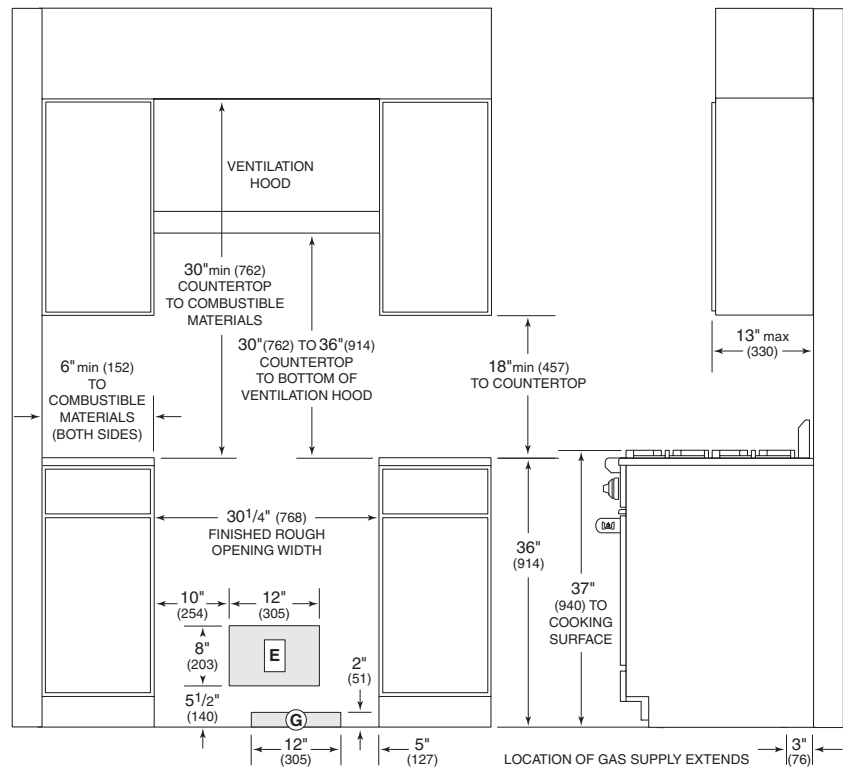
Unit dimensions may vary by $\pm 1/8"$.

LEGS AND CASTERS ALLOW
1" (25) HEIGHT ADJUSTMENT

Specifications

Exterior Finish	Classic Stainless Steel
Overall Width	30"
Overall Height (to cooking surface)	37"
Overall Depth	28 ³ / ₈ "
Oven Interior Capacity	4.4 cu ft
Oven Interior Dimensions	24" W x 18 ⁵ / ₈ " H x 17" D
Opening Width	30 ¹ / ₄ "
Opening Height (to countertop)	36"
Opening Depth	24"
Electrical Requirements	110/120 V AC 50/60 Hz, 15 amp circuit
Shipping Weight	325 lbs

Installation Specifications



ISLAND INSTALLATIONS: 12" (305) MINIMUM CLEARANCE FROM BACK OF RANGE TO COMBUSTIBLE REAR WALL ABOVE COUNTERTOP – 0" (0) TO NON-COMBUSTIBLE MATERIALS

Installation Notes

- A Wolf Pro wall, chimney, island ventilation hood or hood liner is recommended.
- Natural gas and LP gas installations above 8,000' require the high altitude kit.

Dimensions in parentheses are in millimeters unless otherwise specified.