

like.no.other™



Digital Cameras and Printers

Fall 2006

SONY®



Getting the shot

Any camera will take pictures. Sony® cameras are designed to help you take great pictures, even when the circumstances are less than great. Sony cameras shine when the light is low. When subjects are distant. Or moving quickly. Sony uses the latest digital technology to help you get the shot you really want.

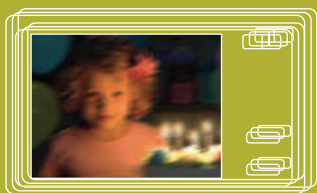
Sony innovation comes from a mastery of all things digital: from the sensors that capture your picture to the processor that manages it to the media that stores it to the battery that powers the entire system. Backed by these vast resources, we're free to create digital cameras that change the way you see the world.

So don't settle for ordinary pictures. Get the shot you really want. With Sony Cyber-shot® cameras.

you really want.

Capture the glow, not the glare.

The birthday candles. The nightclub. The limo ride downtown. They all change under the harsh glare of flash photography. Now Sony lets you capture these moments without flash — and without blur. Super SteadyShot® optical image stabilization controls camera shake. High sensitivity of ISO 1250 makes night scenes come alive. And Clear RAW™ noise reduction keeps it clean and clear. ▼



Without Super SteadyShot



With Super SteadyShot

Sony captures the moment without the harshness of flash. (Sample photos for illustration purposes.)

Don't be afraid of the dark.

Darkness can confuse the auto focus system, because the camera can't "see" contrast coming off the image sensor. That's why Sony offers AF Illuminator. You get accurate focus even in low light.

Shoot at the speed of life.

Life moves fast. If you're not on your toes, the most memorable moments can pass you by. That's why Sony cameras incorporate the Real Imaging Processor™ LSI. That's how Sony cameras typically start in about one second. And shutter lag is typically 0.01 second! (Times vary by camera.)

Hundreds of pictures in your pocket.

Now whenever you have your camera, you've got pictures of the kids. And the vacation. And the new house. Every time you take a picture, the DSC-N2 Pocket Album stores a VGA-size image, conveniently organized by date. Carry up to 500 pictures! And Slide Show presents your pictures with your own selection of MP3 background music and transitions. ▼



Pocket Album

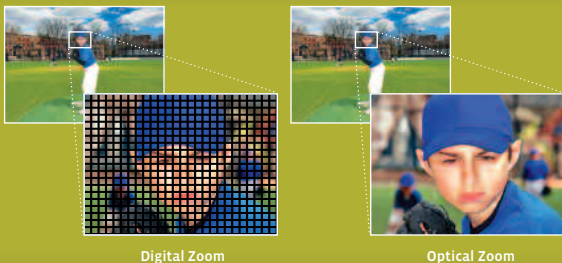
Now everyone can see what you did on your summer vacation. The DSC-N2 Pocket Album stores hundreds of VGA-size images, neatly filed by date. (Sample photos for illustration purposes.)

Print without a PC.

A printer that's great for word processing may not be great for your precious memories. Compared to the typical ink-jet printer, the Sony DPP-FP35 and DPP-FP55 offer the superior beauty of 16.7 million colors — and the superior protection of the Sony SuperCoat2™ finish.

Get closer to the action.

Our 12x optical zoom lens gets you far closer than conventional lenses, while maintaining every pixel of resolution. Since optical quality is critical, Sony uses a Carl Zeiss® lens. And since 12x optical zoom can magnify the effect of camera shake, Super SteadyShot® stabilization helps keep your pictures clearer. ▼



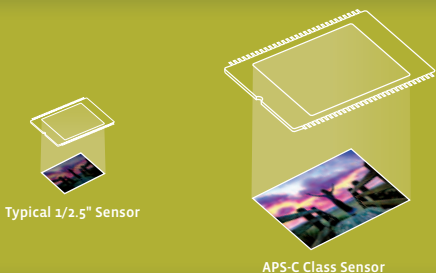
Digital Zoom

Optical Zoom

12x optical zoom brings you closer to the action without sacrificing resolution the way digital zoom can. (Sample photos for illustration purposes.)

Shoot like a pro.

The DSC-R1 and α100 image sensors are literally 12 times the typical size! That's 12 times the area to soak up light. The result? Gorgeous color. Amazing sensitivity. And the superb clarity that only a larger sensor can deliver. ▼



Typical 1/2.5" Sensor

APS-C Class Sensor

The DSC-R1 and α100 APS-C class image sensors have a whopping 12 times the area of the typical 1/2.5" sensor. (Sample photos for illustration purposes.)

Cyber-shot®

DSC-S500

Digital Camera

6.0
megapixels

3X
optical zoom

Alkaline/NiMH
batteries

Affordable performance with a great big screen.

Extra-large, 2.4" LCD monitor with 110K pixels makes framing and sharing pictures easy (viewable area measured diagonally).

6.0 Megapixel Super HAD™ CCD with exclusive Sony technology for superb resolution, sensitivity and clarity.

Sony 3x optical zoom lens for sharp pictures in a compact design.

Extended battery stamina: up to 350 shots with optional NiMH rechargeables (up to 60 shots with supplied one-use alkalines)*

25 MB internal memory; shoot without a flash memory card.

Slot for optional Memory Stick Duo™ and Memory Stick PRO Duo™ media to save more pictures, copy them for friends.

12-bit Digital Extended Processor (DXP) for extended dynamic contrast and detail.

Convenient photo modes include Auto, P-Auto and six Scene Selection modes.

QVGA Movie mode captures up to 320 x 240 resolution, up to 30 frames per second; length limited only by your media.

Burst Mode captures three full-resolution shots at 2-second intervals, great for kids and pets.



SUPPLIED ACCESSORIES

- AA alkaline batteries
- USB multi-connector cable
- Wrist strap
- Software CD-ROM



Monitor picture simulated.

* Actual battery life may vary upon usage patterns.

Cyber-shot®

DSC-W30 DSC-W50

Digital Cameras

6.0
megapixels

3X
optical zoom

Li-Ion
rechargeable battery

Benchmarks in resolution, convenience and control.

6.0 Megapixel Super HAD™ CCD with exclusive Sony technology for superb resolution, sensitivity and clarity.

Carl Zeiss® Vario-Tessar® 3x optical zoom lens combines exceptional picture quality and ultra-sleek design.

Ideal form factor with rangefinder-type, eye-level optical viewfinder for traditional shooting style.

Extra-large, 2" (DSC-W30) or 2.5" (DSC-W50) LCD monitor makes framing and sharing pictures easy (viewable area measured diagonally).

High sensitivity and Clear RAW™ noise reduction; great in low light when flash would spoil the mood.

Our own Real Imaging Processor™ LSI for fast startup, fast shot-to-shot times and extended battery stamina.

32 MB internal memory; shoot without a flash memory card*

Slot for optional Memory Stick Duo™ and Memory Stick PRO Duo™ media to save more pictures, copy them for friends.

Live Histogram display makes it easier than ever to analyze your shots for correct exposure.

Add 30mm thread filters and wide or tele conversion lenses with the optional VAD-WB adaptor.

Rechargeable NP-BG1 Lithium Ion battery for long lasting power; supplied BC-CSG charger.



SUPPLIED ACCESSORIES

- NP-BG1 rechargeable battery
- BC-CSG battery charger
- A/V and USB cables (DSC-W30 only)
- Multi-cable (DSC-W50 only)
- Wrist strap
- Software CD-ROM



DSC-W30 also available in:



Blue



White

DSC-W50 also available in:



Black



Monitor picture simulated.

* A portion of the memory is used for data management functions. Actual available memory for storage is 30 MB.

† DSC-W50 only.

Cyber-shot®

DSC-W70 DSC-W100

Digital Cameras

7.2/8.1
megapixels

3X
optical zoom

Li-Ion
rechargeable battery

Take your pictures to the next level.

7.2 Megapixel (DSC-W70) or 8.1 Megapixel (DSC-W100) Super HAD™ CCD with exclusive Sony technology for superb resolution, sensitivity and clarity.

Carl Zeiss® Vario-Tessar® 3x optical zoom lens combines exceptional picture quality and ultra-sleek design.

Ideal form factor with rangefinder-type, eye-level optical viewfinder for traditional shooting style.

Extra-large, high-resolution 2.5" LCD monitor makes framing and reviewing pictures easy (viewable area measured diagonally).

High sensitivity and Clear RAW™ noise reduction; great in low light when flash would spoil the mood.

Our own Real Imaging Processor™ LSI for fast startup, fast shot-to-shot times and extended battery stamina.

58 MB (DSC-W70) and 64 MB (DSC-W100) internal memory; shoot without a flash memory card.

Slot for optional Memory Stick Duo™ and Memory Stick PRO Duo™ media to save more pictures, copy them for friends.

Live Histogram display makes it easier than ever to analyze your shots for correct exposure.

Manual exposure mode with 46-step Shutter speed and 2-step Aperture control (DSC-W100 only).

Add 30mm thread filters and wide or tele conversion lenses with the optional VAD-WB adaptor (DSC-W70 only).

Rechargeable NP-BG1 Lithium Ion battery for long lasting power; supplied BC-CSG charger.



DSC-W70 also available in:



Black

DSC-W100 also available in:



Black



SUPPLIED ACCESSORIES

- NP-BG1 rechargeable battery
- BC-CSG battery charger
- AV/USB multi-connector cable
- Wrist strap
- Software CD-ROM



Monitor picture simulated.
† DSC-W100 only.

Cyber-shot®

DSC-T10

Digital Camera

7.2
megapixels

3X
optical zoom

InfoLithium®
rechargeable battery

Ultra-slim and ultra-steady for flash-free indoor pictures.

Barely the size of a deck of cards and less than 7/8" thin (measured at its narrowest point); sleek lens door doubles as on/off switch.

Super SteadyShot® optical image stabilization, a decided advantage with such a small, handheld camera.

Natural, flash-free photography in low light with high sensitivity (ISO 1000) and Clear RAW™ noise reduction.

Slide Show function with your choice of transition effects and your own background music.

Large 2.5" LCD monitor with 230K pixels; transfective design remains visible even in bright sunlight (viewable area measured diagonally).

7.2 Megapixel Super HAD™ CCD with exclusive Sony technology for superb resolution, sensitivity and clarity.

Carl Zeiss® Vario-Tessar® 3x optical zoom lens combines exceptional picture quality with unique internal design so it never extends from the camera body.

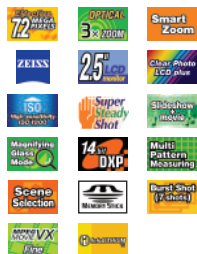
56 MB internal memory; shoot without a flash memory card.

Clear Photo Plus™ LCD for higher resolution, contrast and brightness, 40% better color than our previous LCDs.

Magnifying Glass Mode can focus to within 0.4" (1 cm), displaying images at 3.5x actual size for spectacular macro shots.

Slot for optional Memory Stick Duo™ and Memory Stick PRO Duo™ media; integrated tripod socket.

Designed for use with InfoLithium® rechargeable battery (included) for long-lasting power without "memory effect;" enables time-remaining display.



SUPPLIED ACCESSORIES

- NP-FT1 InfoLithium® rechargeable battery
- BC-CS3 battery charger
- AV, USB, DC-in multi-connector cable
- Wrist strap
- Software CD-ROM



DSC-T10 also available in:



Black

Pink

White



Monitor picture simulated.

Cyber-shot®

DSC-T50

Digital Camera

7.2
megapixels

3X
optical zoom

InfoLithium®
rechargeable battery

Superior pictures and a super-big screen to show them off.

A style statement available in silver, matte black and red; barely the size of a deck of cards; lens door doubles as on/off switch.

Super SteadyShot® optical image stabilization, a decided advantage with such a small, handheld camera.

Natural, flash-free photography in low light with high sensitivity (ISO 1000) and Clear RAW™ noise reduction.

Slide Show with elegant touch-screen control; choice of transition effects and your own background music.

Enormous 3.0" LCD monitor with 230K pixels; transreflective design remains visible even in bright sunlight (viewable area measured diagonally).

7.2 Megapixel Super HAD™ CCD with exclusive Sony technology for superb resolution, sensitivity and clarity.

Carl Zeiss® Vario-Tessar® 3x optical zoom lens combines exceptional picture quality with unique internal design so it never extends from the camera body.

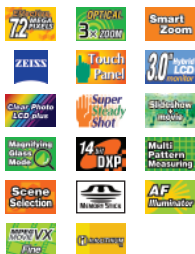
56 MB internal memory; shoot without a flash memory card.

Clear Photo Plus™ LCD for higher resolution, contrast and brightness, 40% better color than our previous LCDs.

Incredible battery stamina: up to 400 shots* with the supplied InfoLithium® rechargeable battery.

Slot for optional Memory Stick Duo™ and Memory Stick PRO Duo™ media; integrated tripod socket.

Designed for use with InfoLithium® rechargeable battery (included) for long-lasting power without "memory effect," enables time-remaining display.



SUPPLIED ACCESSORIES

- NP-FR1 InfoLithium® rechargeable battery
- BC-CS3 battery charger
- AV, USB, DC-in multi-connector cable
- Wrist strap
- Paint pen stylus
- Software CD-ROM



DSC-T50 also available in:



Matte black



Red

Monitor picture simulated.

* Actual battery life may vary upon usage conditions.

Cyber-shot®

DSC-N2

Digital Camera

10.1
megapixels

3X
optical zoom

Li-Ion
rechargeable battery

Stylish shooting meets the perfect picture showcase.

10.1 Megapixel Super HAD™ CCD with exclusive Sony technology for superb resolution, sensitivity and clarity.

Sleek, stylish design with enormous 3.0" LCD monitor that makes it easy to read menus, share images with friends (viewable area measured diagonally).

Pocket Album function on-board storage for up to 500 images (VGA size); each picture you take automatically goes into the album!

Slide Show function with your choice of transition effects and your own background music.

Easy, elegant touch-screen access to your Pocket Album pictures; simple search by date and time.

25 MB internal memory for full-resolution pictures; shoot without a flash memory card.

Clear Photo Plus™ LCD for higher resolution, contrast and brightness, 40% better color than our previous LCDs.

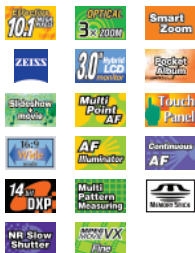
Carl Zeiss® Vario-Tessar® 3x optical zoom lens combines exceptional picture quality and ultra-sleek design.

Our own Real Imaging Processor™ LSI for fast startup, fast shot-to-shot times and extended battery stamina.

Add captions, stamps and drawings with the supplied stylus and direct, on-screen Paint feature.

Slot for optional Memory Stick Duo™ and Memory Stick PRO Duo™ media to save more pictures, copy them for friends.

High Sensitivity (ISO 1600), great for handheld shooting in low light.



SUPPLIED ACCESSORIES

- NP-BG1 rechargeable battery
- BC-CSG battery charger
- AV, USB, DC-in multi-connector cable
- Wrist strap
- Paint pen stylus
- Software CD-ROM



Monitor picture simulated.

Media	Memory Stick® Media	Memory Stick PRO™ Media				
Representative Shot Storage	128 MB*	256 MB*	512 MB*	1 GB*	2GB*	4GB*†
JPEG Standard						
3888 x 2592 (10 MP)	51	92	188	384	789	1622
3264 x 2448 (8 MP)	60	109	223	456	934	1847
3072 x 2304 (7 MP)	73	132	268	548	1125	2223
2816 x 2112 (6 MP)	79	142	290	592	1215	N/A
2560 x 1920 (5 MP)	96	174	354	723	1482	2928
2048 x 1536 (3 MP)	149	264	537	1097	2250	4447
1920 x 1080 (2 MP; 16:9 Wide)	246	446	907	1852	3798	7596
1280 x 960 (1 MP)	376	649	1320	2694	5524	10915
640 x 480 (VGA)	1975	3571	7261	14821	30385	60036
JPEG Fine						
3888 x 2592 (10 MP)	25	46	94	192	394	811
3264 x 2448 (8 MP)	32	59	121	247	506	1000
3072 x 2304 (7 MP)	37	67	137	279	573	2223
2816 x 2112 (6 MP)	42	77	157	322	660	N/A
2560 x 1920 (5 MP)	51	92	188	384	789	1559
2048 x 1536 (3 MP)	82	148	302	617	1266	2501
1920 x 1080 (2 MP; 16:9 Wide)	133	238	484	988	2025	4050
1280 x 960 (1 MP)	202	357	726	1482	3038	6003
640 x 480 (VGA)	790	1428	2904	5928	12154	24014
MPEG Movie Video Mail**	1:31:33	2:51:21	5:47:05	11:44:22	24:18:25	48:04:40
MPEG Movie EX**	23:39	42:47	1:27:01	N/A	N/A	N/A
MPEG Movie VX**	5:54	10:42	21:47	44:27	1:31:09	3:00:06
MPEG Movie VX Fine**	N/A	2:57	6:02	12:20	25:19	50:01

* Actual storage varies by camera. Available storage capacity of Memory Stick® and Memory Stick PRO™ media may vary. A portion of the memory is used for data management functions. Actual available memory in MBs is 128=123, 256=220, 512=460, 1GB=940MB, 2GB=1.85GB, 4GB=3.66GB. Memory Stick transfer speeds vary by and are dependent upon the host hardware device.

** MPEG Movie Capacity in Hours:Minutes:Seconds. Actual storage varies by camera.

† Due to FAT32 Limitations, maximum size for a single MPEG Movie file is approximately 2GB.

Complete the picture with Sony accessories!

To get the most out of digital photography, get connected with Sony accessories. Increase your range with lens adapters. Expand your creative horizons with filters. Keep the power flowing with additional batteries. And protect your camera with a custom-designed carrying case! Sony accessories make it happen.



SONY®

Sony Electronics Inc. Digital Imaging and Information Technology Group, 16530 Via Esprillo Drive, San Diego, CA, 92127
1-800-295-7669 www.theshotyouwant.com

© 2006 Sony Electronics Inc. Reproduction in whole or in part without written permission is prohibited. All rights reserved. Features and specifications are subject to change without notice. Non-metric weights and measures are approximate. Sony, Clear Photo, Clear Photo Plus, Clear RAW, Cyber-shot, Cyber-shot Station, InfoLithium, Like No Other, Memory Stick, Memory Stick Duo, Memory Stick PRO, Memory Stick PRO Duo, the Memory Stick logo, Real Imaging Processor, Smart Zoom, Stamina, SteadyShot, SuperCoat 2 and Super HAD are trademarks of Sony. Carl Zeiss, Vario-Sonnar, and Vario-Tessar are trademarks of Carl Zeiss. All other trademarks are property of their respective owners.

CA6322W

Picture Station

DPP-FP35
DPP-FP55

Digital Photo Printers

16
million colors

4" x 6"
print size

Photo
quality processor

Sony brings lab-quality printing home!

Fast: prints a 4" x 6" image in about 64 seconds from a PC, including processing time.

Lab-quality prints at home with fabulous dye sublimation picture quality. Prints resist moisture, fingerprints.

Built-in 2" LCD (viewable area, measured diagonally) for in-printer editing, creative printing options (DPP-FP55 only).

PictBridge® compatibility for direct printing via USB interface* with compatible cameras.

Versatile printing directly from a camera's Memory Stick®, Secure Digital™ or other media with adaptor (DPP-FP55 only).

16.7 million colors.

SuperCoat™ protective lamination resists color shift, fading, moisture and fingerprints!

Superb color gamut: a wider range of colors than conventional silver halide printing, especially reds and yellows.

Borderless 4" x 6" prints.

PC printing via USB interface.

Auto feed paper tray holds up to 20 prints.

Compact size: smaller than an 8" x 10" photo print!



SUPPLIED ACCESSORIES

- Paper tray
- Cleaning cartridge
- Software CD-ROM USB driver
- AC adaptor
- 10-sheet print pack



Monitor and print pictures simulated.

* Not all products with USB connectors may communicate with each other due to chipset variations.

† DPP-FP55 only.

Cyber-shot®

DSC-H2

Digital Camera

6.0
megapixels

12X
optical zoom

NiMH
rechargeable batteries

Get closer than ever with an optically stabilized 12x zoom lens.

12x optical zoom lens pulls in far closer to distant subjects or pulls back for the wide shot.

Super SteadyShot® optical image stabilization fights motion blur, even during longer exposures at full zoom.

High sensitivity and Clear RAW™ noise reduction; great in low light when flash would spoil the mood.

6.0 Megapixel Super HAD™ CCD with exclusive Sony technology for superb resolution, sensitivity and clarity.

Ideal form factor with eye-level through-the-lens electronic viewfinder for traditional shooting style.

Large, high-resolution 2.0" LCD monitor with 85K pixels makes framing and reviewing pictures easy (viewable area measured diagonally).

Our own Real Imaging Processor™ LSI for fast startup, fast shot-to-shot times and extended battery stamina.

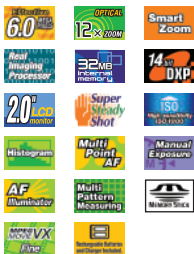
Full manual exposure with 46-step shutter speed and 10-step aperture control.

32 MB internal memory; shoot without a flash memory card*

Slot for optional Memory Stick Duo™ and Memory Stick PRO Duo™ media to save more pictures, copy them for friends.

12x Optical/24x digital/24x total zoom brings even far-away subjects up close.

Add 58mm thread filters and wide or tele conversion lenses (optional).



SUPPLIED ACCESSORIES

- NH-AA-2DB rechargeable NiMH AA batteries
- BC-CS2 battery charger
- Lens hood with adaptor ring
- Lens cap with strap
- A/V and USB cables
- Shoulder strap
- Software CD-ROM



Monitor picture simulated.

* A portion of the memory is used for data management functions. Actual available memory for storage is 30 MB.

Cyber-shot®

DSC-H5

Digital Camera

7.2
megapixels

12X
optical zoom

NiMH
rechargeable batteries

Zoom up to a higher plane of photography.

12x optical zoom lens pulls in far closer to distant subjects or pulls back for the wide shot.

7.2 Megapixel Super HAD™ CCD with exclusive Sony technology for superb resolution, sensitivity and clarity.

Super SteadyShot® optical image stabilization fights motion blur, even during longer exposures at full zoom.

High sensitivity and Clear RAW™ noise reduction; great in low light when flash would spoil the mood.

Black finished chassis with enormous 3.0" LCD monitor for easy framing and sharing of pictures (viewable area measured diagonally).

Ideal form factor with eye-level through-the-lens electronic viewfinder for traditional shooting style.

Clear Photo Plus™ LCD for higher resolution, contrast and brightness, 40% better color than our previous LCDs.

Our own Real Imaging Processor™ LSI for fast startup, fast shot-to-shot times and extended battery stamina.

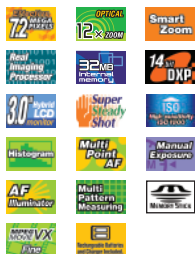
Full manual exposure with 46-step shutter speed and 10-step aperture control.

32 MB internal memory; shoot without a flash memory card.*

Slot for optional Memory Stick Duo™ and Memory Stick PRO Duo™ media to save more pictures, copy them for friends.

12x Optical/2x digital/24x total zoom brings even far-away subjects up close.

Add 58mm thread filters and wide or tele conversion lenses (optional).



SUPPLIED ACCESSORIES

- NH-AA-2DB rechargeable NiMH AA batteries
- BC-CS2 battery charger
- Lens hood with adaptor ring
- Lens cap with strap
- A/V and USB cables
- Shoulder strap
- Software CD-ROM



DSC-H5 also available in:



Silver

Monitor picture simulated.

* A portion of the memory is used for data management functions. Actual available memory for storage is 30 MB.

Cyber-shot®

DSC-R1

Digital Camera

10.3
megapixels

5X
optical zoom

InfoLithium®
rechargeable battery

The bigger the imager, the better the image.

Professional-quality image sensor and remarkably wide zoom lens in a compact, lens-integral body.

Extraordinary combination an APS-C class image sensor and Live Preview of the scene.

Sony 10.3 megapixel CMOS image sensor, 21.5 x 14.4 mm (APS-C class) for superbly high sensitivity, low noise.

Live Preview of the scene in LCD monitor and TTL viewfinder shows 100% framing accuracy, exposure, depth of field.

Carl Zeiss® Vario-Sonnar® 5x zoom lens with exclusive T* (T-star) coatings for high contrast, superb detail.

Extraordinary combination of 24mm wide angle, 5x optical zoom to 120mm telephoto (35mm equivalent) and APS-C class sensor.

Three color modes: Standard sRGB, Vivid sRGB (emulates reversal film) and Adobe® RGB for advanced applications.

Flexible manual exposure: f2.8-16; 30 sec. to 1/2000; Bulb exposure to 3 min.; tunable white balance.

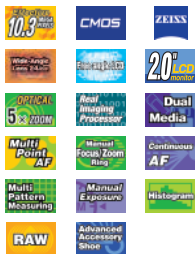
Advanced Gradation Control System enhances dynamic range, avoids crushed blacks and clipped highlights.

Free-angle 2.0" LCD monitor for shots above or far below eye level or around the corner (viewable area measured diagonally).

Advanced monitor/viewfinder displays with grid lines, zebra stripes, histogram, dedicated area for exposure information.

RAW mode captures uncompressed image data.

Hot Shoe, ACC terminal for optional external flashes, accessories.



SUPPLIED ACCESSORIES

- NP-FM50 InfoLithium® rechargeable battery
- AC-L15 AC adaptor/in-camera charger
- Lens hood
- Lens cap
- Video and USB cables
- Shoulder strap
- Software CD-ROM



Monitor picture simulated.

α100

Digital SLR

10.2
megapixels

Interchangeable
lenses

Li-Ion
rechargeable battery

The all-new D-SLR with the 21-year heritage.

Super SteadyShot® image stabilization actually moves the CCD to compensate for camera shake; will not compromise picture quality; works with all system lenses.

10.2 Megapixel CCD enables larger enlargements and high-resolution images after cropping.

Comprehensive Anti-Dust system includes dust-resistant Indium Tin Oxide CCD coating and a CCD “shake” routine.

Supplied Lithium Ion battery with up to 750 shot stamina. (Actual battery life may vary upon usage patterns.)

Accepts 16 million Konica-Minolta Maxxum® bayonet mount lenses dating from as far back as 1985.

High sensitivity and low noise with ISO 1600 lets you increase shutter speed to lower camera shake further still.

Full APS-size CCD (23.6 x 15.8 mm) for low noise, wide dynamic range and outstanding low-light sensitivity.

Bionz™ processor uses Large Scale Integrated (LSI) circuitry to enable advanced processing like the Dynamic Range Optimizer.

Dynamic Range Optimizer adjusts shadow exposure with 400,000 gamma curves (Normal) or corrects both highlights and shadows area-by-area (Advanced).

Eye-Start Autofocus means the camera begins focusing as soon as you begin framing, so you miss fewer shots.

Continuous burst mode at 3 frames per second captures JPEG images continuously up to the limit of the memory card. Captures up to 6 RAW frames, maximum in burst mode.

Multi-pattern measuring with 40-segment honeycomb sensing for super-accurate exposure.

9-point Auto Focus with options like manual focus point selection, Spot AF, Continuous AF and AF Lock.

Extra-large 2.5" LCD monitor (viewable area, measured diagonally) for superb picture review, and extra-large graphic display. 230K pixels for high resolution.

Clear Photo Plus™ LCD for accurate color and high contrast, even in direct sunlight.

Flexible exposure modes include Program Auto, Aperture Priority, Shutter Priority, Exposure Compensation and full Manual.

Built-in flip-up flash.

Scene modes include Portrait, Landscape, Macro, Sports, Sunset and Night Portrait.

Automatic White Balance modes with manual color temperature adjustment.

Dual media capability: accepts optional CompactFlash™ Type I/II media directly, accepts optional Memory Stick PRO™ media via supplied adaptor.

Dimensions 5-1/4 x 3-3/4 x 2-7/8 inches (133 x 95 x 71 mm).

Weight 1 lb., 3 oz. (545 g) including battery, excluding lens and media.

Standard Kit includes SAL-1870 18-70mm f3.5 zoom lens (27-105mm, 35mm equivalent).

SUPPLIED ACCESSORIES

- NP-FM55 Lithium Ion rechargeable battery
- AC adaptor/in-camera charger
- Software CD-ROMs

OPTIONAL ACCESSORIES

- | | | |
|---|--|--|
| LENSES | | LIGHTING |
| ■ SAL-1870 18-70mm f3.5-5.6 27-105mm (35mm equivalent) with α100 | ■ SAL-50F14 50mm f1.4 75mm (35mm equivalent) with α100 | ■ HVL-F56AM Flash |
| ■ SAL-18200 18-200mm f3.5-6.3 27-300mm (35mm equivalent) with α100 | ■ SAL-50M28 50mm f2.8 Macro 75mm (35mm equivalent) with α100 | ■ HVL-F36AM Flash |
| ■ SAL-1118 11-18mm f4.5-5.6 16.5-27mm (35mm equivalent) with α100 | ■ SAL-100M28 100mm f2.8 Macro 150mm (35mm equivalent) with α100 | ■ FA-CCIAM Off Camera Cable |
| ■ SAL-24105 24-105mm f3.5-4.5 36-157.5mm (35mm equivalent) with α100 | ■ SAL-35F14G 35mm f1.4 G 52.5mm (35mm equivalent) with α100 | ■ FA-ECIAM Off Camera Extension Cable |
| ■ SAL-75300 75-300mm f4.5-5.6 112.5-500mm (35mm equivalent) with α100 | ■ SAL-70200G 70-200mm f2.8 G 105-300mm (35mm equivalent) with α100 | ■ FA-MC1AM Multi-Flash Cable |
| ■ SAL-135F28 135mm f2.8 Smooth Transition Focus 202.5mm (35mm equivalent) with α100 | ■ SAL-300F28G 300mm f2.8 G 450mm (35mm equivalent) with α100 | ■ FA-TCIAM Off-Flash Triple Connector |
| ■ SAL-500F80 500mm f8 Reflex 750mm (35mm equivalent) with α100 | ■ SAL-85F14Z Carl Zeiss Planar® T* 85mm f1.4 127.5mm (35mm equivalent) with α100 | ■ FA-CS1AM Off Camera Shoe |
| ■ SAL-16F28 16mm f2.8 Fisheye 24mm (35mm equivalent) with α100 | ■ SAL-135F18Z Carl Zeiss Sonnar® T* 135mm f1.8 202.5mm (35mm equivalent) with α100 | ■ FA-EB1AM External Battery Adaptor |
| ■ SAL-20F28 20mm f2.8 30mm (35mm equivalent) with α100 | ■ SAL-1680Z Carl Zeiss Vario-Sonnar® T* DT 16-80mm f3.5-4.5 24-120mm (35mm equivalent) with α100 | ■ HVL-MT24AM Macro Twin Flash Kit |
| ■ SAL-28F28 28mm f2.8 42mm (35mm equivalent) with α100 | ■ SAL-14TC 1.4X Tele-converter | ■ HVL-RLAM Ring Light |
| | ■ SAL-20TC 2X Tele-converter | OTHER |
| | | ■ FDA-M1AM Magnifier |
| | | ■ FDA-A1AM Angle Finder |
| | | ■ FDA-EC Series Eyepiece Correctors |
| | | ■ RM-S1AM Short Cable Remote Shutter Release |
| | | ■ RM-L1AM Long Cable Remote Shutter Release |
| | | ■ NP-FM55H Lithium Ion Rechargeable Battery |
| | | ■ AC-V900AM AC Adaptor Charger |
| | | ■ ACC-AMFM Starter Accessory Kit |



Monitor picture simulated.

Camera	DSC-S500	DSC-W30	DSC-W50	DSC-W70	DSC-W100	DSC-T10	DSC-T50	DSC-N2	DSC-H2	DSC-H5	DSC-R1	α100
Lens & Imager												
Sony Image Sensor	1/2.5" CCD	1/2.5" CCD	1/2.5" CCD	1/2.5" CCD	1/1.8" CCD	1/2.5" CCD	1/2.5" CCD	1/1.7" CCD	1/2.5" CCD	1/2.5" CCD	21.5 x 14.4 mm CMOS	23.6 x 15.8 mm CCD
Megapixel	6.0 MP	6.0 MP	6.0 MP	7.2 MP	8.1 MP	7.2 MP	7.2 MP	10.1 MP	6.0 MP	7.2 MP	10.3 MP	10.2 MP
Lens/Optical Zoom	Sony, 3X	Carl Zeiss*, 3X	Carl Zeiss*, 3X	Carl Zeiss*, 3X	Carl Zeiss*, 3X	Carl Zeiss*, 3X	Carl Zeiss*, 3X	Carl Zeiss*, 3X	Carl Zeiss*, 12X	Carl Zeiss*, 12X	Carl Zeiss*, 5X	Sony, 3.9X†
Aperture	f2.8-4.8	f2.8-5.2	f2.8-5.2	f2.8-5.2	f2.8-5.2	f3.5-4.3	f3.5-4.3	f2.8-5.4	f2.8-3.7	f2.8-3.7	f2.8-4.8	f3.5-5.6†
Focal Length	5.4-16.2 mm	6.3-18.9 mm	6.3-18.9 mm	6.3-18.9 mm	7.9-23.7 mm	6.3-19.0 mm	6.3-19.0 mm	7.9-23.7 mm	6.0-7.2 mm	6.0-7.2 mm	14.3-71.5 mm	18-70 mm†
35mm Equivalency	32-96 mm	38-114 mm	38-114 mm	38-114 mm	38-114 mm	38-114 mm	38-114 mm	38-114 mm	36-432 mm	36-432 mm	24-120 mm	24-105 mm†
Smart Zoom* Function	0-13X (VGA)	0-13X (VGA)	0-13X (VGA)	0-14X (VGA)	0-15X (VGA)	0-12X (VGA)	0-14X (VGA)	0-17X (VGA)	0-52X (VGA)	0-57X (VGA)	0-15X (1 MP)	N/A
Precision Digital Zoom	2X (6X Tilt)	2X (6X Tilt)	2X (6X Tilt)	2X (6X Tilt)	2X (6X Tilt)	2X (6X Tilt)	2X (6X Tilt)	2X (6X Tilt)	2X (24X Tilt)	2X (24X Tilt)	2X (10X Tilt)	N/A
Multi-Point AF	N/A	Auto, 5 Area	Auto, 5 Area	Auto, 5 Area	Auto, 5 Area	Auto, 5 Area	Auto, 5 Area	Auto/Manual, 5 Area	Auto, 3 Area	Auto, 3 Area	Auto/Manual, 5 Area	Auto/Manual, 9 Area
AF Illuminator Light	N/A	Yes	Yes	Yes	Yes	Yes	Yes	Yes	Yes	Yes	Yes	Yes
Manual Focus	N/A	Yes, 5-Step	Yes, 5-Step	Yes, 5-Step	Yes, 5-Step	Yes, 5-Step	Yes, 5-Step	Yes, 5-Step	Yes, Continuously Variable	Yes, Continuously Variable	Yes, Continuous Ring	Yes, Continuous Ring
Camera												
White Balance	4 Preset	5 Preset	5 Preset	5 Preset	5 Preset	5 Preset	5 Preset	5 Preset	5 Preset, Manual	5 Preset, Manual	7 Preset, Manual	6 Preset, Manual
Aperture Range	2-step f2.8-5.2	2-step f2.8-7.1	2-step f2.8-7.1	2-step f2.8-7.1	2-step f2.8-5.6	2-step f3.5-8.0	2-step f3.5-8.0	2-step f2.8-8.0	10-step f2.8-8.0	10-step f2.8-8.0	16-step f2.8-16.0	Depends on lens
Shutter Speed Range	Auto 1-1/2000	Auto 1-1/2000	Auto 1-1/2000	Auto 1-1/2000	46-step 30-1/1000	Auto 1-1/1000	Auto 1-1/1000	46-Step 30-1/2000	46-Step 30-1/1000	46-Step 30-1/1000	49-Step to 1/2000, Bulb	30 to 1/4000, Bulb
Manual Exposure	N/A	N/A	N/A	N/A	Adj. Shutter/Ap	N/A	N/A	Adj. Shutter/Ap	Shutter/Ap Priority, Manual	Shutter/Ap Priority, Manual	Shutter/Ap Priority, Manual	Shutter/Ap Priority, Manual
Scene Modes	6 modes	7 modes	7 modes	7 modes	6 modes	10 modes	10 modes	8 modes	7 modes	10 modes	4 modes	6 modes
Flash Effective Range	1.6"-8" (0.5-2.5 m) ISO 400	2.7"-24" (0.8-7.3 m) ISO 1000	2.7"-24" (0.8-7.3 m) ISO 1000	2.3"-21.2" (0.7-6.5 m) ISO 1000	3.3"-34" (1.0-10.5 m) ISO 1250	4"-16" (0.1-4.9 m) ISO 1000	4"-19.8" (0.1-6 m) ISO 1000	1'-15" (0.5-8.5 m)	3'-52" (0.9-16 m) ISO 1000	3'-52" (0.9-16 m) ISO 1000	1.6-29.8" (0.5-8.5 m)	GN 12 (meters at ISO 100)
Anti-Blur												
High Sensitivity Mode	ISO 400	ISO 1000	ISO 1000	ISO 1000	ISO 1250	ISO 1000	ISO 1000	ISO 1600	ISO 1000	ISO 1000	ISO 3200	ISO 1600
Clear RAW™ Noise Reduction	N/A	Yes	Yes	Yes	Yes	Yes	Yes	Yes	Yes	Yes	Yes	N/A
Super SteadyShot® Optical Image Stabilization	N/A	N/A	N/A	N/A	N/A	Yes	Yes	N/A	Yes	Yes	N/A	Body integral
LCD/Viewfinder												
LCD*	2.4" 110K pixel	2.0" 85K pixel	2.5" 115K pixel	2.5" 115K pixel	2.5" 115K pixel	2.5" 230K pixel	3.0" 230K pixel	3.0" 230K pixel	2.0" 85K pixel	3.0" 230K pixel	2.0" 134K pixel	2.5" 230K pixel
Eye-level Viewfinder	N/A	Optical, True Zoom	Optical, True Zoom	Optical, True Zoom	Optical, True Zoom	N/A	N/A	N/A	201K EVF LCD, TTL	201K EVF LCD, TTL	235K EVF LCD, TTL	TTL Optical
Histogram Display	N/A	Yes	Yes	Yes	Yes	Yes	Yes	Yes	Yes	Yes	Yes, PB RGB	Yes
Recording												
10MP Image	N/A	N/A	N/A	N/A	N/A	N/A	N/A	3648 x 2736	N/A	N/A	3888 x 2592	3872 x 2592
8MP Image	N/A	N/A	N/A	N/A	3264 x 2448	N/A	N/A	3264 x 2448	N/A	N/A	N/A	N/A
7MP Image	N/A	N/A	N/A	3072 x 2304	N/A	3072 x 2304	3072 x 2304	N/A	N/A	3072 x 2304	3264 x 2176	N/A
6MP Image	2816 x 2112	2816 x 2112	2816 x 2112	N/A	N/A	N/A	N/A	N/A	N/A	2816 x 2112	N/A	N/A
5MP Image	N/A	N/A	N/A	2592 x 1944	2592 x 1944	2592 x 1944	2592 x 1944	2592 x 1944	N/A	2592 x 1944	2784 x 1856	2896 x 1936
3MP Image	2048 x 1536	2048 x 1536	2048 x 1536	2048 x 1536	2048 x 1536	2048 x 1536	2048 x 1536	2048 x 1536	2048 x 1536	2048 x 1536	2160 x 1440	1920 x 1280
VGA Image	640 x 480	640 x 480	640 x 480	640 x 480	640 x 480	640 x 480	640 x 480	640 x 480	640 x 480	640 x 480	N/A	N/A
3:2 Image	2816 x 1872	2816 x 1872	2816 x 1872	3072 x 2048	3264 x 2176	3072 x 2048	3072 x 2048	3648 x 2432	2816 x 1872	3072 x 2048	All Images	All Images
Burst Mode frames/fps	3-shot, 1 fps (6 MP)	3-shot, 1.4 fps (6 MP)	3-shot, 1.4 fps (6 MP)	4-shot, 1.1 fps (7 MP)	4-shot, 1.1 fps (8 MP)	5-shot, 1.1 fps (7 MP)	5-shot, 1.1 fps (7.2 MP)	3-shot, 0.8 fps (10 MP)	2816 x 1872	3-shot, 1.3 fps (6 MP)	3-shot, 3 fps (10 MP)	3-shot, 3 fps (10 MP)
Auto Exposure Bracketting	N/A	N/A	N/A	N/A	N/A	Yes	Yes	Yes	Yes	Yes	Yes	Yes
MPEG Movie Modes	AVI OVGA 30 fps	VX Fin/Std, VM	VX Fin/Std, VM	VX Fin/Std, VM	VX Fin/Std, VM	VX Fin/Std, VM	VX Fin/Std, VM	VX Fin/Std, VM	VX Fin/Std, VM	VX Fin/Std, VM	N/A	N/A
Multi-Burst Mode	N/A	Yes	Yes	Yes	Yes	Yes	Yes	Yes	Yes	Yes	N/A	N/A
General												
Connections**	USB	AV/USB, DC-in	AV/USB, DC-in	AV/USB, DC-in	AV/USB, DC-in	Multi Connector	Multi Connector	Multi Connector	AV/USB	AV/USB	Video/USB/Pwr	Video/USB/Pwr
Battery Compatibility	2 AA Alkaline, NiMH	Lithium Ion NP-BG1	Lithium Ion NP-BG1	Lithium Ion NP-BG1	Lithium Ion NP-BG1	InfoLithium® NP-FT1	InfoLithium® NP-FR1	Lithium Ion NP-BG1	2 AA NiMH	2 AA NiMH	InfoLithium® NP-FM50	Lithium Ion NP-FM50H
PictBridge™ Compatibility	Yes	Yes	Yes	Yes	Yes	Yes	Yes	Yes	Yes	Yes	Yes	Yes
Pocket Album/Slide Show	N/A / N/A	N/A / N/A	N/A / N/A	N/A / N/A	N/A / N/A	N/A / Yes	N/A / Yes	Yes / Yes	N/A / N/A	N/A / N/A	N/A / N/A	N/A / N/A
* Viewable area measured diagonally. ** Not all products with USB connectors may communicate with each other due to chipset variations. † With standard kit lens: SAL-1870 f3.5-5.6.												