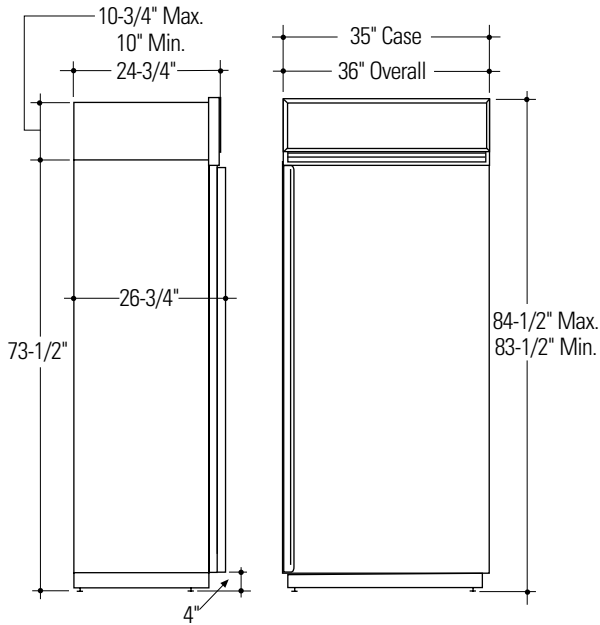




Monogram™

ZIF36NM—GE Monogram 36" Built-In All-Freezer

Enclosure Cutout and Product Dimensions (in inches)



ZIF36N RH, Freezer

Handle on the left side, the door swings left to right.

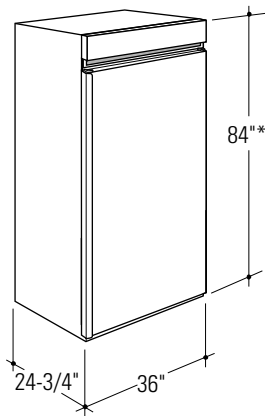
ZIF36N LH, Freezer

Handle on the right side, the door swings right to left.

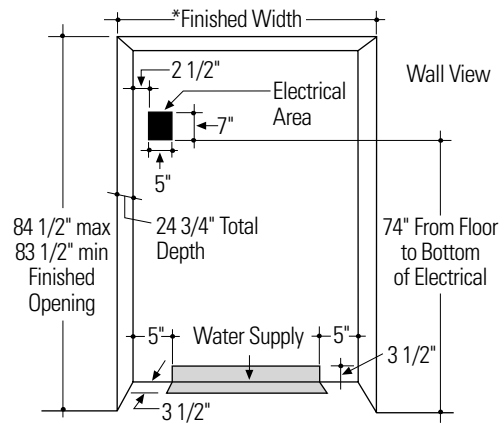
Caution

Refrigerators are much heavier at the top than at the bottom – be extra careful when moving.

- To achieve a flush fit, the finished cutout width must be at least 36" wide.
- In a semi-flush installation, the finished cutout must be 35-1/2".
- The electrical and water locations must be located as shown for either type of installation.



*Shipped at 84" installation height. Can be adjusted to 83-1/2" or 84-1/2" with grille panel kits.



*36" for a flush installation.
35-1/2" Min. for a semi-flush installation.

Note: Additional cutout width may be required when side panels are used. Add side panel thickness to the finished cutout to calculate rough-in width. See installation examples on the following page.

For answers to your Monogram,® GE Profile™ or GE appliance questions, visit our website at GEAppliances.com or call GE Answer Center® service, 800.626.2000.

Specification Revised 1/02





Monogram™

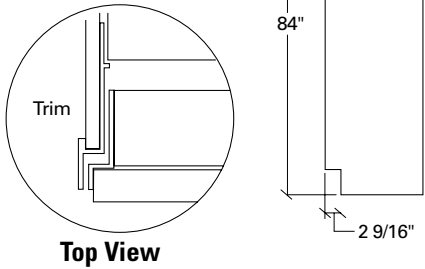
ZIF36NM–GE Monogram 36" Built-In All-Freezer

- Side panels are required whenever the sides of the product will be exposed and when installed between frameless cabinets. See pages 3 and 4.
- Side panels are not required when installed into an enclosure.
- Side panel installation will be determined by the design of the side panel you have previously chosen.
- Side panels must be installed plumb.

- If you choose to use 1/4" side panels, they should be inserted into the case trim as illustrated. Fasten the panels to the product with velcro strips (provided) before setting in place. See illustration A.
- 1/2" to 3/4" side panels are normally set into place and fastened to adjacent cabinetry or the back wall before rolling the product into the opening. See illustration B.

Illustration A

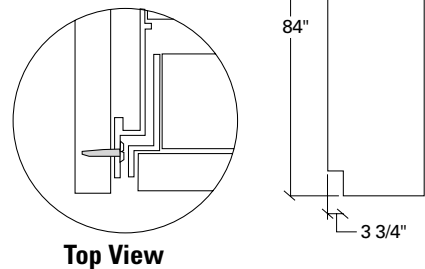
1/4" Side Panels – Insert end of side panel into case trim. Fasten with Velcro strips included.



Standard 4" high toe-kick or trim to fit. Height may vary depending on application.

Illustration B

1/2" to 3/4" Side Panels – Leading edge of side panel is flush with cabinet front. Fasten to the back wall using a cleat.



Standard 4" high toe-kick or trim to fit. Height may vary depending on application.

⚠ WARNING

ANTI-TIP PRECAUTIONS

The refrigerator is heavy at the top and must be secured to prevent the possibility of tipping forward.

⚠ ATTENTION

PRECAUTIONS CONTRE LES BASCULEMENTS

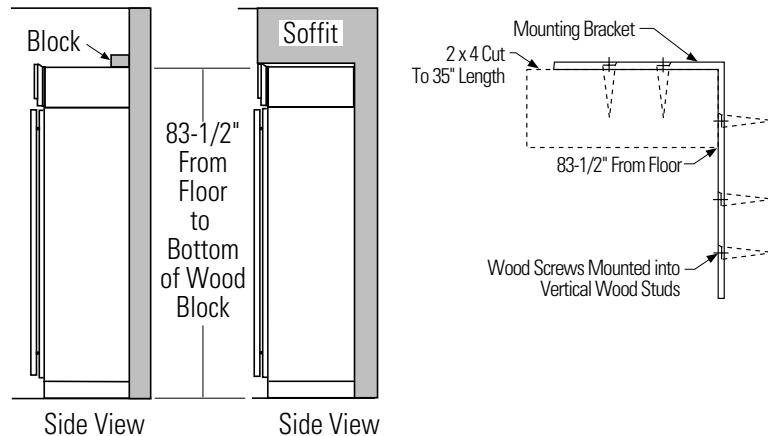
Le réfrigérateur est beaucoup plus lourd en haut et il faut le maintenir en place pour éviter la possibilité de son basculement vers l'avant.

- Mount brackets provided using #12 or #14 wood screws located 83-1/2" from the finished floor.
- Screws must protrude at least one inch into vertical wall studs.
- Attach a 35" long 2x4 block to brackets as shown.

Roll Unit Into Opening

- Gently push refrigerator or freezer into opening with hands against front corners. The cardboard pad should be beneath the product.
- Roll product into the opening until it is flush or semi-flush with adjacent cabinets.

Specification Revised 1/02



Important Note: When the refrigerator or freezer is installed under a soffit or if there is not enough height for this method of security, use Step 6 as an alternate. **These products must be secured to prevent tipping.**

For answers to your Monogram®, GE Profile™ or GE appliance questions, visit our website at GEAppliances.com or call GE Answer Center® service, 800.626.2000.

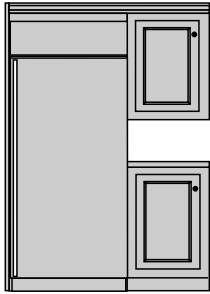




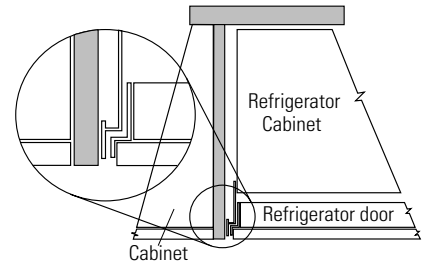
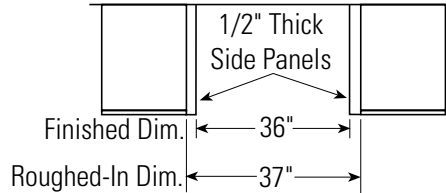
Monogram™

ZIF36NM–GE Monogram 36" Built-In All-Freezer

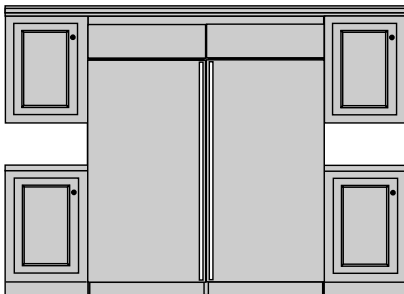
Installation at End of Run



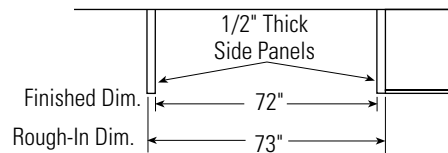
Refrigerator or Freezer



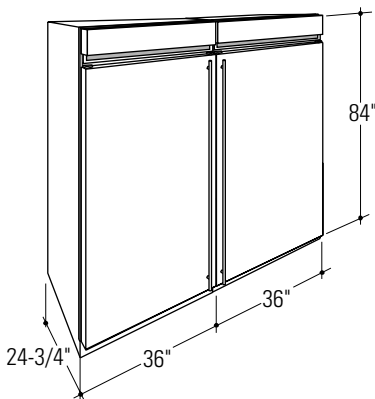
Note: 1/2" thick side panels shown. Side panels can be any thickness. Add side panel thickness to outside trim width (36" or 72" for two models) to calculate the rough-in dimension. The leading (front) edge must be finished to match surrounding cabinetry.



Refrigerator and Freezer installed side-by-side



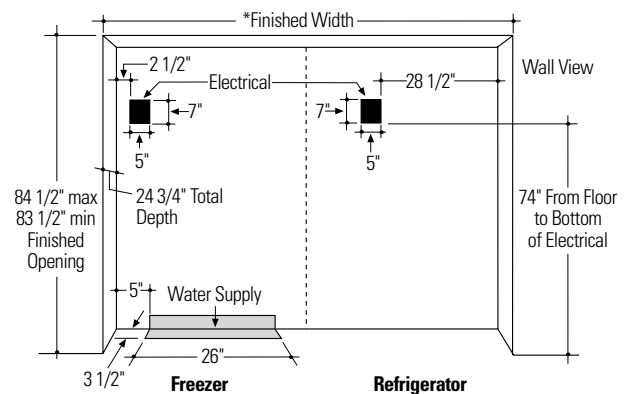
Side By Side Installation of Freezer and Refrigerator



For a complete food storage center, install a Monogram Freezer and Refrigerator side by side. For even more capacity, install two refrigerators and/or two freezers.

- Order ZFC1 Trim Kit to cover the side trim and/or gap between the two products.
- Order ZUGSS Unified Grille Panel Kit for one continuous stainless steel grille panel.
- The electrical and water locations must be located as shown for either type of installation. A separate 115V, 60Hz., 20 amp power supply is recommended for each product.

Specification Revised 1/02



*72" min. for a flush installation
71-1/2" min. for a semi-flush installation

Note: Additional cutout width may be required when side panels are used. Add side panel thickness to the finished cutout to calculate rough-in width.

For answers to your Monogram®, GE Profile™ or GE appliance questions, visit our website at GEAppliances.com or call GE Answer Center® service, 800.626.2000.

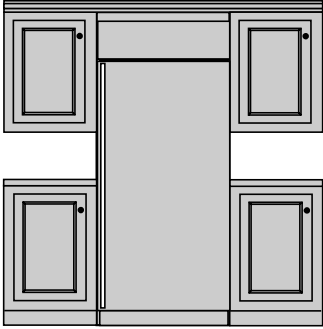




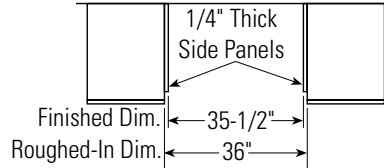
Monogram™

ZIF36NM–GE Monogram 36" Built-In All-Freezer

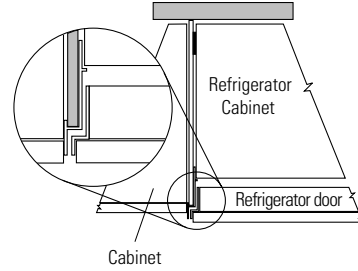
Installation Between Base & Wall Cabinets



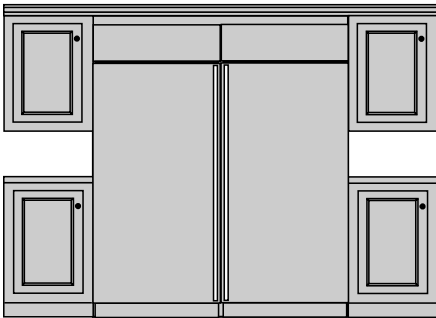
Refrigerator or Freezer



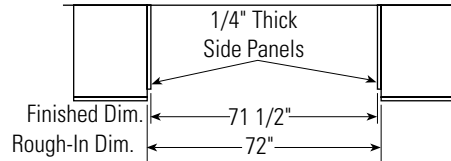
Note: 1/4" thick side panels can be inserted into the case trim, making the rough-in the same as the outside trim width, 36".



1/4" Side Panels. Insert end of side panel into trim.



Refrigerator and Freezer installed side-by-side



ZFC1 Trim Kit is recommended to cover side trim and/or gap between the two products. Order ZUGSS Unified Stainless Steel Grille Panel Kit for one continuous panel.

For answers to your Monogram®, GE Profile™ or GE appliance questions, visit our website at GEAppliances.com or call GE Answer Center® service, 800.626.2000.



Listed by Underwriters Laboratories



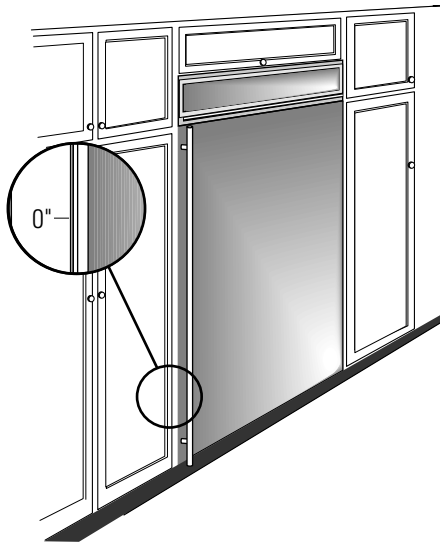
Monogram™

ZIF36NM–GE Monogram 36" Built-In All-Freezer

Design Information

Flush or Semi-Flush Enclosure Installation

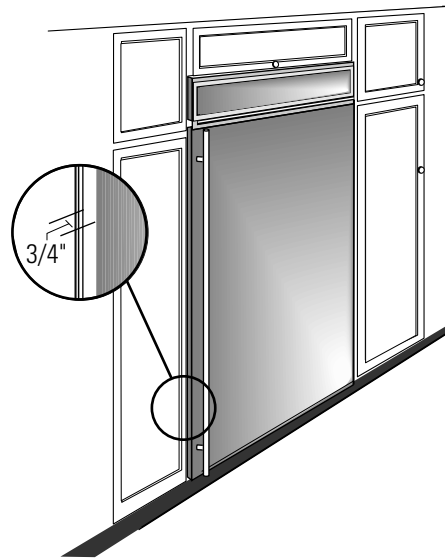
True Flush Installation



True Flush Installation

In a flush installation, the refrigerator doors will align evenly with the front face of adjacent cabinet doors. The refrigerator blends into the surrounding cabinetry.

Semi-Flush Installation



Semi-Flush Installation

These refrigerators can also be installed semi-flush into an enclosure using the minimum cutout width. The case trim creates a frame around the opening.

Monogram built-in refrigerators and freezers can be installed flush with typical 24-3/4" deep cabinetry.

When installed semi-flush, the case trim will conceal slight gaps around the enclosure. The refrigerator will project forward approximately 3/4" beyond the front face of surrounding cabinetry.

Side Panel Requirements:

- Side panels are not required whenever the refrigerator or freezer is installed into an enclosure or between pantry and oven cabinets.
- Side panels are required whenever the sides of the product are exposed.
- Side panel sizes vary depending on the type of installation being made.

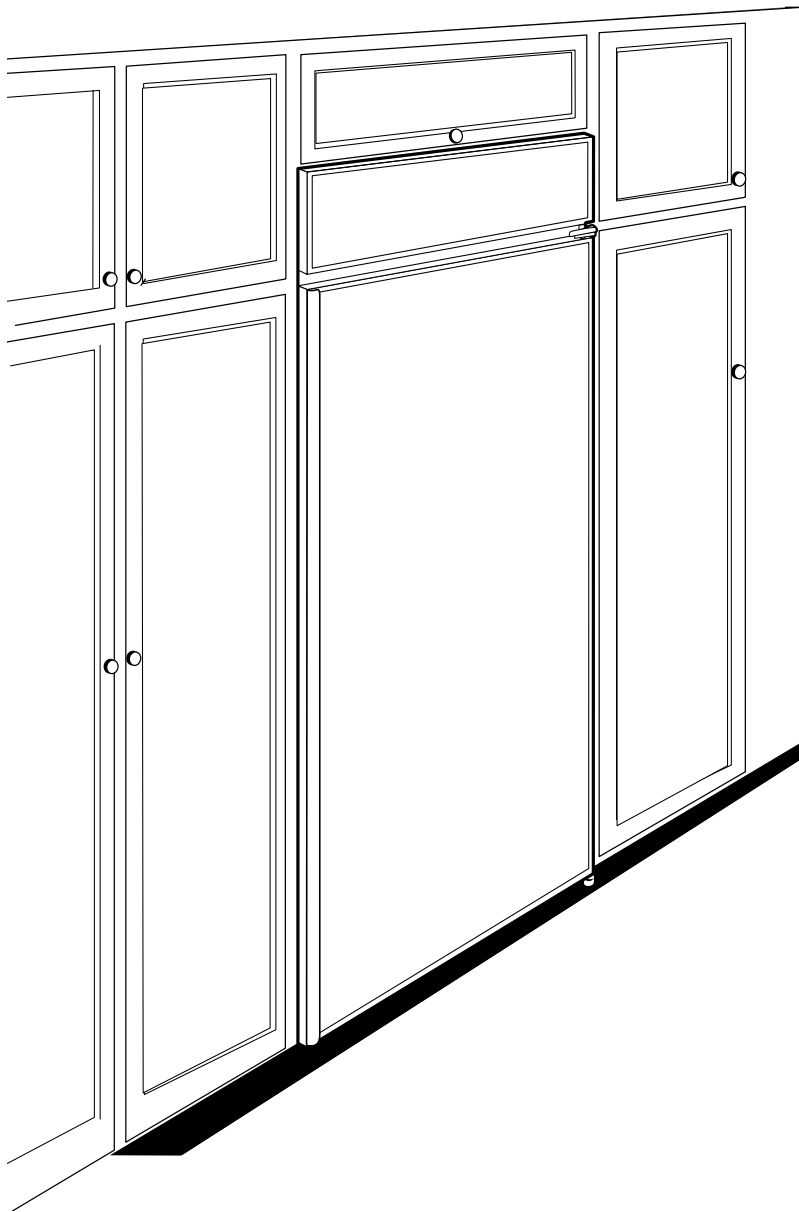
To accomplish an attractive installation, you must:

1. Determine the need for side panels.
2. Determine side panel thickness.
3. Order matching side panels from the cabinet manufacturer. Be sure to provide the exact dimensions.



Monogram™

ZIF36NM–GE Monogram 36" Built-In All-Freezer



Features and Benefits

- 21.9 Cu. Ft. Freezer Capacity
- Wire Freezer Shelves (5 Adjustable, 1 Fixed, 1 Full-Width Fixed)
- Wire Baskets with Full-Extension Slides (2 Regular, 4 Large)
- 2 Extra Large Wire Baskets with Easy Access Lid and Full Extension Slides
- 8 Door Bins and Gallon Storage
- Automatic Defrost Sealed System Design
- Full Extension Slides
- Door Panels Required
- Model ZIFS36NM–Stainless steel wrap
- Model ZIF36NM–Door panels required