

## TECHNICIAN'S GUIDE



Your LCD TV may look slightly different from the one pictured above.

# **Table of Contents**

---

---

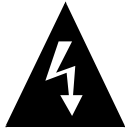
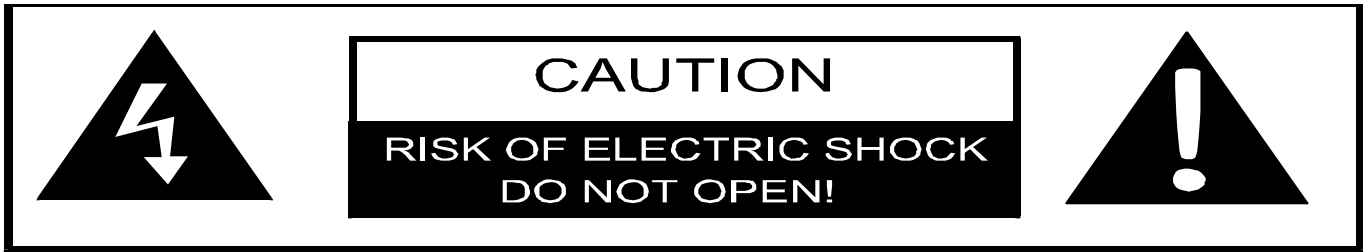
**Important Safety Instructions ..... 2**

**Technician Setup ..... 4**

**Enseo Set Top Box Operation ..... 6**

**Troubleshooting ..... 7**

# Important Safety Instructions



The lightning flash with arrowhead symbol, within an equilateral triangle, is intended to alert the user to the presence of uninsulated “dangerous voltage” within the product’s enclosure that may be of sufficient magnitude to constitute a risk of electrocution.



The exclamation point within an equilateral triangle is intended to alert the user to the presence of important operating and maintenance (servicing) instructions in the literature accompanying the appliance. For TVs with a built-in DVD player:



**CAUTION: Laser radiation when open. Do not stare into beam.**

**CAUTION: USE OF ANY CONTROLS, ADJUSTMENTS, OR PROCEDURES OTHER THAN THOSE SPECIFIED HEREIN MAY RESULT IN HAZARDOUS RADIATION EXPOSURE.**

## **POWER SUPPLY:**

Connect the supplied adapter to the side of the DVD player (if equipped) or back of the TV in the slot marked “Power In”. Plug the two-prong end of the power cord to a 110-220 volt electrical outlet. If you have difficulty inserting the plug, turn it over and reinsert it. If the unit will not be used for a long time, disconnect the plug from the outlet. (For TVs with a built-in DVD player)

## **NOTE:**

Before plugging the power cord into an AC outlet, make sure that all input and output device connections have been made.

**CAUTION:** These servicing instructions are for use by qualified service personnel only. To reduce the risk of electric shock, do not perform any servicing other than that contained in the operating instructions unless you are qualified to do so.

Refer to service manual for servicing instructions.

***The images in this manual are for reference only and may differ from your model.***

# Important Safety Instructions

- 1) Read and follow all directions.
- 2) Keep these instructions.
- 3) Heed all warnings.
- 4) Do not use near water.
- 5) Clean only with dry cloth.
- 6) Do not block any ventilation openings. Maintain well ventilated conditions around the product, Do

## **IMPORTANT FOR LASER PRODUCTS**

- 1. CLASS 1 LASER PRODUCT**
- 2. DANGER:** Visible laser radiation when open and interlock failed or defeated. Avoid direct exposure to beam.
- 3. CAUTION:** Do not open the top cover. There are no user serviceable parts inside the unit. Leave all servicing to qualified service personnel.

- not put product on bed, sofa or anything that blocks ventilation. Install in accordance with the manufacturer's instructions.
- 7) Do not install near any heat sources such as radiators, heat registers, stoves, or other apparatus (including amplifiers) that produce heat.
  - 8) Do not defeat the safety purpose of the polarized or grounding-type plug. A polarized plug has two blades with one wider than the other. A grounding type plug has two blades and a third grounding prong. The wide blade or the third prong is provided for your safety. If the provided plug does not fit into your outlet, consult an electrician for replacement of the obsolete outlet.
  - 9) Protect the power cord from being walked on or pinched particularly at plugs, convenience receptacles, and the point where they exit from the apparatus.
  - 10) Only use attachments/accessories specified by the manufacturer.
  - 11) Use only with the cart, stand, tripod, bracket, or table specified by the manufacturer, or sold with the apparatus. When a cart is used, use caution when moving the cart/apparatus combination to avoid injury from tip-over.
  - 12) Unplug this apparatus during lightning storms or when unused for long periods of time.
  - 13) Refer all servicing to qualified service personnel. Servicing is required when the apparatus has been damaged in any way, such as power-supply cord or plug is damaged, liquid has been spilled or objects have fallen into the apparatus, the apparatus has been exposed to rain or moisture, does not operate normally, or has been dropped.
  - 14) Apparatus shall not be exposed to dripping or splashing and no objects filled with liquids, such as vases, shall be placed on the apparatus.



**Note: Do not touch the LCD screen. In the event that an electric shock is transmitted, the screen could be damaged.**

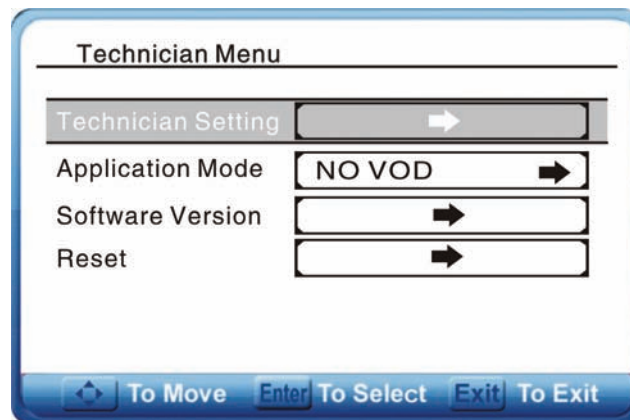
## **Copyright Protection (For TVs with a built-in DVD player)**

This product incorporates copyright protection technology that is protected by U.S. patents and other intellectual property rights. Use of this copyright protection technology must be authorized by Macrovision, and is intended for home and other limited viewing uses only unless otherwise authorized by Macrovision. Reverse engineering or disassembly is prohibited.

# Technician Setup

This television is designed for commercial use and some settings can be controlled via the Technician's Menu. To access this menu and these settings, please follow the procedures below.

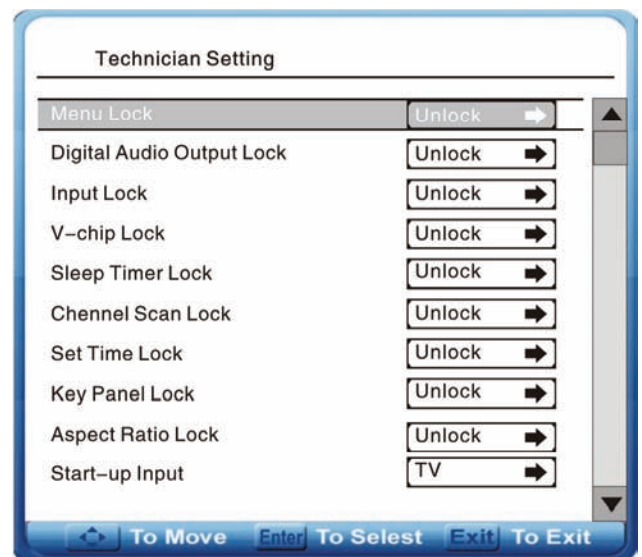
1. Turn down the television volume to the minimum level.
2. Use the number buttons to enter the PIN. The Technician's Menu will then appear as shown.  
**Please consult your Polaroid sales representative for a PIN number.**



Within this menu, press the ▲▼ button to select item and press the ◀ or ▶ button to enter the setup menu; press the Exit button to exit the menu.

## Technician Setting

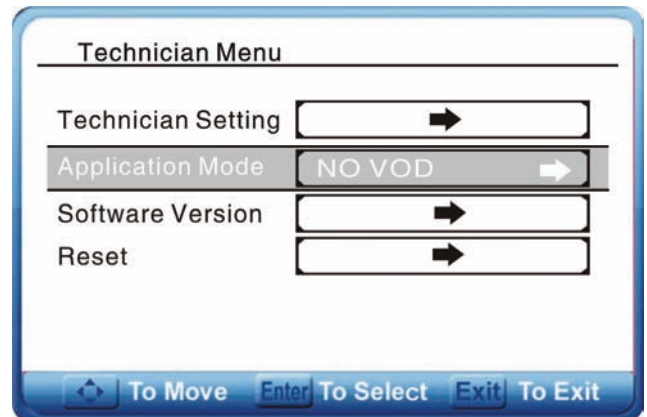
Press the ▲▼ button to select **Technician Setting** and press the ◀ ▶ button to enter the setup menu. Within this menu, press the ▲▼ button to select items and press the **Enter** button to set. Press the **Exit** button to exit the menu.



# Technician Setup (Continued)

## Application Mode

Press the ▲▼ button to select **Application Mode** and press the **Enter** button to enter the select the application mode (VOD): NXTV, OnCommand, OnCommand/Enseo, HSI, No VOD, LodgeNet or LodgeNet/Enseo. Press the **Exit** button to exit the menu.



## Software Version

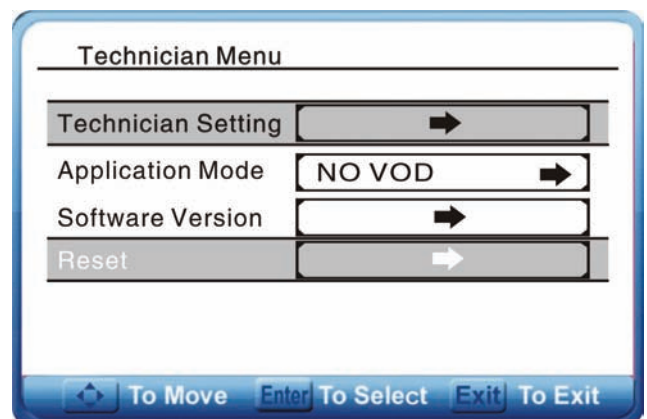
Press the ▲▼ button to select **Software Version** and press the **Enter** button to display the software version information on the screen. Press the **Exit** button to exit the menu.

**Note:** Software Version information will change after firmware updates.



## Reset

Press the ▲▼ button to select **Reset** and press the **Enter** button to reset all the settings of technician menu to default status. Press the **Exit** button to exit the menu.



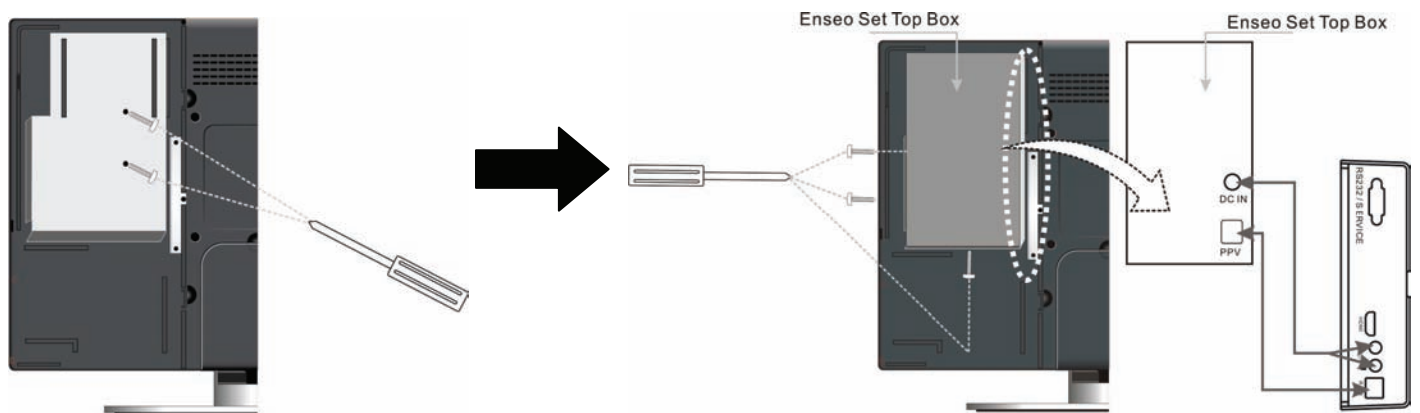
# Enseo Set Top Box Operation

Your TV may have come equipped with an optional Enseo set top box for hospitality Video on Demand (VOD) support. For models equipped with an Enseo set top box, please refer to the following.

## **Enseo Set Top Box Installation:**

Refer to the figure and the steps below to install the Enseo set top box to the unit:

1. Open the back cover on the left rear panel of the unit.
2. Carefully insert the bracket into the appropriately sized cavity on the back of the TV and lock it using the screws.
3. Carefully insert the Enseo set top box into the appropriately sized cavity on the bracket and lock with the screws.
4. Plug one end of the communication cord into the PPV jack on the **Enseo** set top box.
5. Plug the other end of the communication cord into the RJ-11 jack on the unit. The television has are two RJ-11 jacks with the same functionality, one on the left rear panel and the other on the right rear panel; either can be used.
6. Plug one end of the power supply cord into the DC IN jack on the **Enseo** set top box.
7. Plug the other end of the power supply cord into the either of the DC OUT jacks on the unit.
8. Close the back cover.



**Note: Before installing the Enseo Set Top Box, make sure that the television is unplugged and powered off.**

# Troubleshooting

**Note: if a hospitality VOD system is in use, please ensure all VOD functionality is working properly, contacting the VOD provider's technical support if necessary, prior to following the television troubleshooting procedures below.**

Many simple problems can quickly be solved using the procedures below. Please follow the procedures below prior to contacting Polaroid customer service. If you suspect something wrong with this unit, immediately turn the power off and disconnect the power connector from the unit. Never try to repair the unit yourself because it is dangerous to do so.

SYMPTOM	CHECK ITEM
There is no display on the screen.	Make sure the unit is turned on and all connections are correct. Ensure that the input selected is active.
There is no sound.	Make sure the unit is turned on and all connections are correct. Make sure the volume is not turned down or muted. Make sure the sound setup is correct. In DVD mode, make sure disc is not dirty or warped.
There is no picture or picture moves up and down.	Make sure all connections are correct. Make sure the unit is in correct video mode.
The unit can't play discs.	Make sure disc is loaded in correctly. Make sure disc is not dirty or warped. Make sure the region code is the same as region code of DVD disc. Make sure water condensation has not occurred. If it occurs, take out the disc and leave the unit on for at least one hour.
The unit does not continue to play discs or plays the same section repeatedly.	Make sure disc is not dirty or damaged. Make sure the unit is not in any repeat status.
The remote control does not work.	Replace the batteries in the remote control with fresh batteries. Make sure there are no obstructions between the remote control and the television. Make sure the remote control is pointing at the television. Make sure the batteries are correctly installed in the remote control.

## Other Notes:

Static electricity, lightning, power outages or brownouts and other external interference may cause the television to behave abnormally. Should this occur, unplug the television power cord from the outlet, wait 60 seconds, and then plug it in again to reset the unit. If the problem persists, then please disconnect the power and consult a qualified technician.

Manufactured under license from Dolby Laboratories.

"Dolby" and the double-D symbol are trademarks of Dolby Laboratories.

Confidential unpublished works. ©1992 -1997 Dolby Laboratories, Inc.

All rights reserved.



is a trademark of SRS Labs, Inc.

TruSurroundXT technology is incorporated under license from SRS Labs, Inc.

