

Offering everything from the latest 1080p video output to superb 2-channel analog reproduction achieved by thorough attention to detail, this universal DVD player has a design that radiates a feeling of luxury.



1 Magnificent Audio Performance

- DVD-Audio and Super Audio CD playback
- High rigidity, high vibration damping mechanism
- Large transformer exclusively for audio section
- Top class 192kHz/24-bit audio DACs (2 channels x 4)
- Audio Direct mode

2 High Picture Quality

- 1080p video outputs via HDMI
- HDMI interface (Ver 1.1)
- Noise Shaped Video
- Faroudja DCDi processing
- High performance 216MHz/12-bit video DAC
- Progressive Scan (NTSC/PAL)

3 Advanced Features

- Luxurious design with luminescent remote unit
- MP3, JPEG, DivX® and WMA playback
- RS-232C interface for a touch-panel controller
- Wide screen mode selection

Main Specifications

Disc Compatibility	DVD-Audio/Video, Super Audio CD, SVCD, VCD, Audio CD, Picture CD, MP3, JPEG, DivX and WMA
Disc Compatibility	DVD+RW/+R (Video/VR format), DVD-R/-RW (Video), and CD-R/RW (CDDA, SVCD, VCD, Picture CD, MP3, JPEG, DivX and WMA)

VIDEO PERFORMANCE

Video D/A Converter	216 MHz/12-bit
Video Output	1 Vp-p/75 ohms
S-Video Output	Y 1 Vp-p/75 ohms C 0.3 Vp-p/75 ohms
Component Video Output	Y 1 Vp-p/75 ohms Pb 0.7 Vp-p/75 ohms Pr 0.7 Vp-p/75 ohms

AUDIO PERFORMANCE

Audio D/A Converters	192 kHz/24-bit (2 channels x 4)
Signal-to-Noise Ratio	120 dB
Dynamic Range	106 dB
Frequency Response	
DVD (96 kHz sampling)	2 Hz–44,000 kHz
DVD (48 kHz sampling)	2 Hz–22,000 kHz
SVCD (48 kHz sampling)	2 Hz–22,000 kHz
SVCD (44.1 kHz sampling)	2 Hz–20,000 kHz
CD/VCD (44.1 kHz sampling)	2 Hz–20,000 kHz
Harmonic Distortion + Noise	0.001%
Dimensions (W x H x D)	17-1/8" x 4-3/16" x 12-1/8" 435 x 107 x 309 mm
Weight	13.9 lbs.; 6.3 kg

d-cinema "d-cinema" is the slogan of Yamaha A/V products and technology, reflecting our focus on digital technology and our leadership in creating and refining digital home theater.

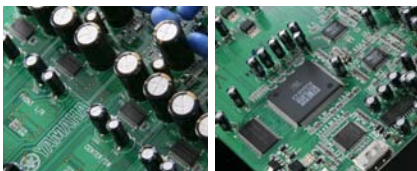
High Sound Quality

Designed and Constructed for Superior Quality

The DVD-S2700 is not just another "high quality" DVD player. Every aspect of the circuit design, parts and even chassis were planned extensively with a view to achieving truly superior sound quality in the finest Yamaha tradition, based on analog two-channel sound. It was developed not only as a player for DVD movies, but as a component that delivers superb music performance.

The interior has independent chambers for the power supply, operational and video circuits, as well as separate covers, preventing any chance of interference between sections. The chassis is a highly rigid, reinforced frame that prevents any vibrations from affecting the sound. A large transformer exclusively for the audio section eliminates any possibility of sound degradation at the power supply level.

Four top class 192kHz/24-bit 2-channel audio DACs are used, while the audio circuitry is designed for highest sound quality, using high performance capacitors and other parts and painstakingly tuned by technicians who are obsessed with achieving the most "natural sound."



Interior view with independent chambers (top), 216kHz/12-bit audio DACs (2channels x 4, bottom left) and HDMI 1080p supporting video circuit board (bottom right)

The result is a DVD player capable of bringing out the full potential of multi-channel audio sources such as DVD-Audio and Super Audio CD.

Audio Direct Mode

Selecting the Audio Direct mode cuts the video circuitry out of the signal path, so there is no chance of it affecting the sound quality. The front panel illumination is also turned off to prevent noise interference from the LCD.

High Picture Quality

HDMI Output (Ver 1.1) Including 1080p Output

HDMI (High Definition Multimedia Interface) output allows the DVD player to transfer digital video and audio signals directly to an HDMI equipped monitor or projector, instead of having to convert them to analog. 1080p video signals can be output, providing the most detailed high definition picture quality currently available, as well as 480p, 576p, 720p and 1080i video signals.



Noise Shaped Video™ and DCDI Progressive Scanning

This technology, from Analog Devices, uses oversampling and advanced techniques such as multi-bit sigma-delta processing and bit-shuffling to improve converter performance by moving converter noise to an area of the spectrum where it can be removed by an analog filter. This improves the accuracy of signal representation, allowing images to be displayed at much higher resolutions.



Other advanced technologies used to maximize image quality are Faroudja DCDi Processing, Motion Adaptive Noise Reduction, Cross Motion Suppression, Aspect Ratio Conversion and TrueLife Enhancer.

Progressive Scanning (NTSC/PAL)

Progressive scanning provides maximum resolution for a smoother, filmlike image when viewed on a high definition TV or large screen.

216 MHz/12-Bit Video DAC

This new high performance video DAC ensures superior image quality with all video sources.

Advanced Features

Luxurious Design

The design of the front panel conveys the distinct feeling that this is a luxury component. Not only the overall elegant look, but the fact that it has aluminum panels and cleanly finished aluminum caps on the operating buttons.

MP3, JPEG, DivX® and WMA Playback

This player will play discs recorded in the MP3 (audio), JPEG (images), DivX® (video) and WMA (audio) formats. And it also offers 35-language display of DivX subtitles including Russian, Polish, Hebrew and Turkish.

RS-232C Interface

An RS-232C interface is provided so this player can be controlled via computer in a custom installation.

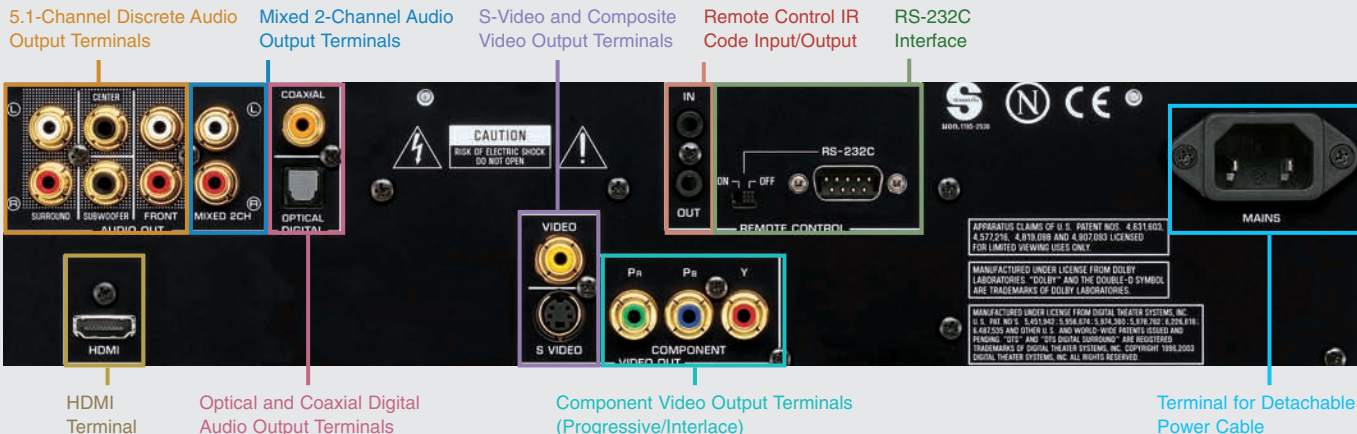
Wide Screen Mode Selection

Two modes can be selected for optimum viewing on widescreen monitors via HDMI and component video outputs: Non-Linear Stretch and Pillar Box. Non-Linear Stretch helps minimize distortion of a 4:3 picture by trimming the top and bottom to make it closer to a 16:9 picture.

Other Notable Features

- On-screen display with GUI (Graphical User Interface)
- Gold-plated terminals for all pin jacks
- Detachable power cable
- Video Picture Modes: Brightness, Contrast, Hue, Sharpness, DNR, Gamma, Chroma Level, Chroma Delay and True Life
- 3-step dimmer modes
- NTSC/PAL complete conversion
- Picture CD playback compatibility
- Multiple repeat play
- Program play
- Remote unit with luminescent buttons

DVD-S2700BL Extensive Connections



* Only compatible with discs that have been finalized when recording is completed. Some discs may not play due to disc characteristics or recording conditions.
 ** Includes recorded in VR format.
 • HDMI, the HDMI logo and High-Definition Multimedia Interface are trademarks or registered trademarks of HDMI Licensing LLC • "DCDi" is a trademark of Faroudja, a division of Genesis Microchip Inc. • NSV is a trademark of Analog Devices Inc. • DivX and associated logos are trademarks of DivX, Inc. and are used under license. • Product designs and specifications are subject to change without notice.